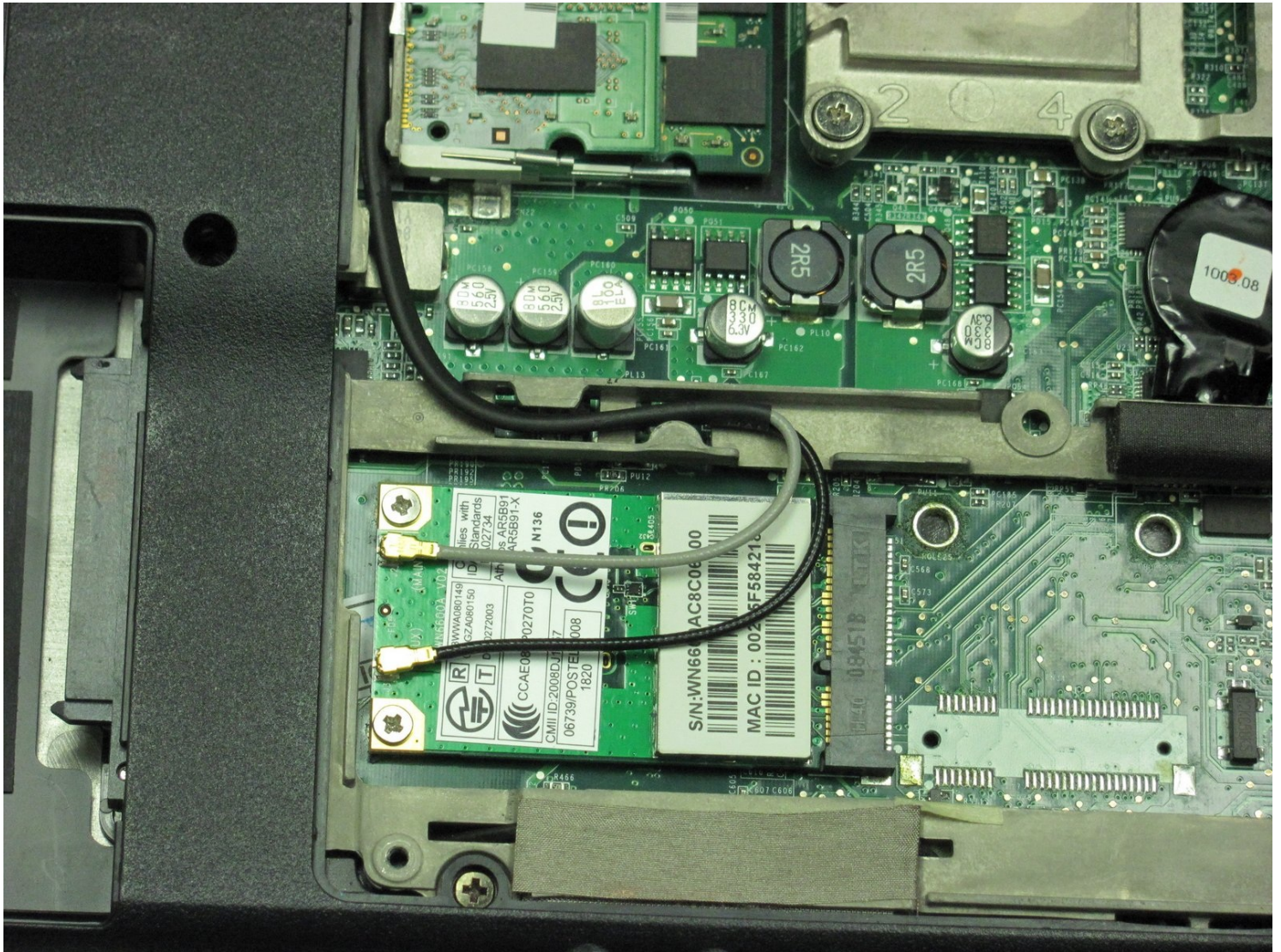




Gateway MD2614u Wireless Card Replacement

In this guide, you will learn how to replace a...

Written By: Toni Pipes



INTRODUCTION

In this guide, you will learn how to replace a Gateway MD2614u laptop wireless card. This replacement is meant to resolve a faulty wireless connection between your laptop and your router. There are different variations of Wi-Fi cards available on the market such as mini PCI-Express cards or M.2 cards with 2.5GHz/5GHz bands. Make sure to pick the one that corresponds to your specific needs and router speeds when replacing.

Symptoms may include slow internet connection, not being able to connect to new Wi-Fi broadbands, or weak connectivity issues. There are no special skills required to complete this repair besides a Phillips #00 screwdriver and your new Wi-Fi card. Remember to shut down and disconnect any external batteries or cords attached to the laptop before starting the procedure.

TOOLS:

Phillips #00 Screwdriver (1)

Step 1 — Back Cover



- Place the laptop so the back cover is facing up.

Step 2



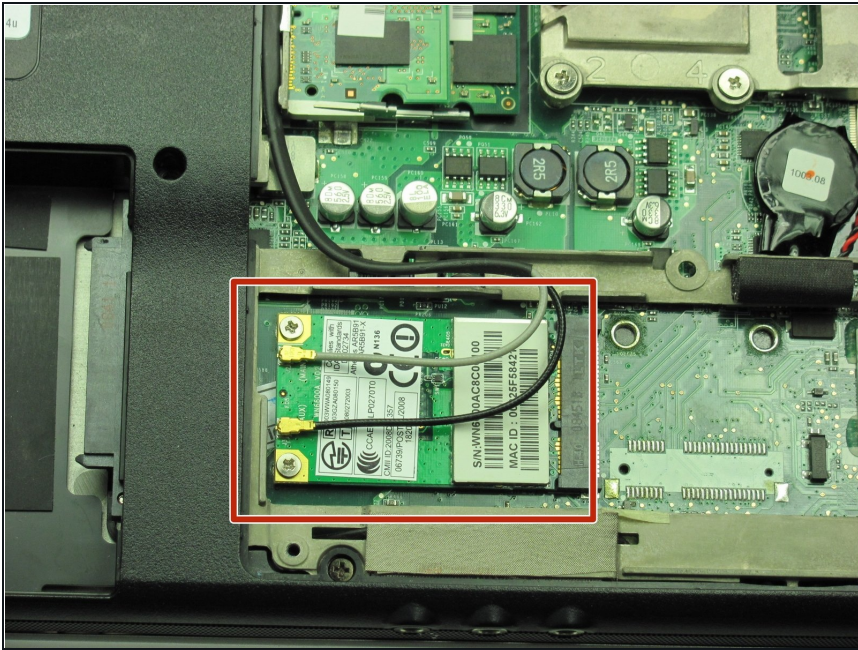
- Remove the 8 screws from the back cover using the Phillips #00 screwdriver.

Step 3



- Lift off the cover.

Step 4 — Wireless Card



- i** The wireless card is located to the right of the hard drive and below the RAM.

Step 5



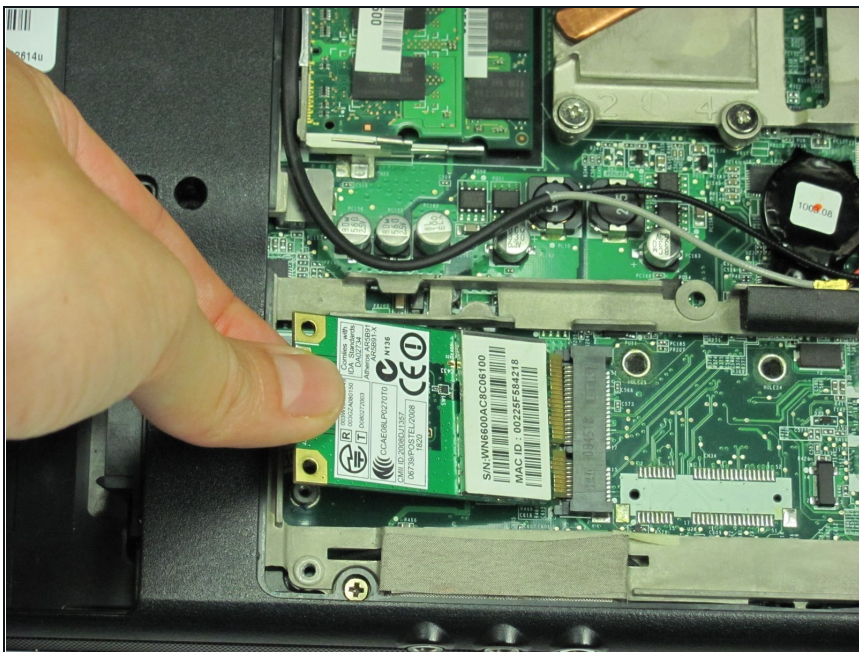
- i** There are black and grey wires with gold heads attached to the top of the wireless card.
- To remove these wires, turn the gold heads counterclockwise and pull up.
- i** You will hear a snap when the heads come off.
- i** It does not matter which wire you remove first, but do so one at a time.

Step 6



- Remove the two screws next to the wires with a Phillips #00 screwdriver.

Step 7



- ① The card will pop up 20 degrees and is loose enough to remove with your hand.
- Carefully pull the card out to the left horizontally.

To reassemble your device, follow these instructions in reverse order.

