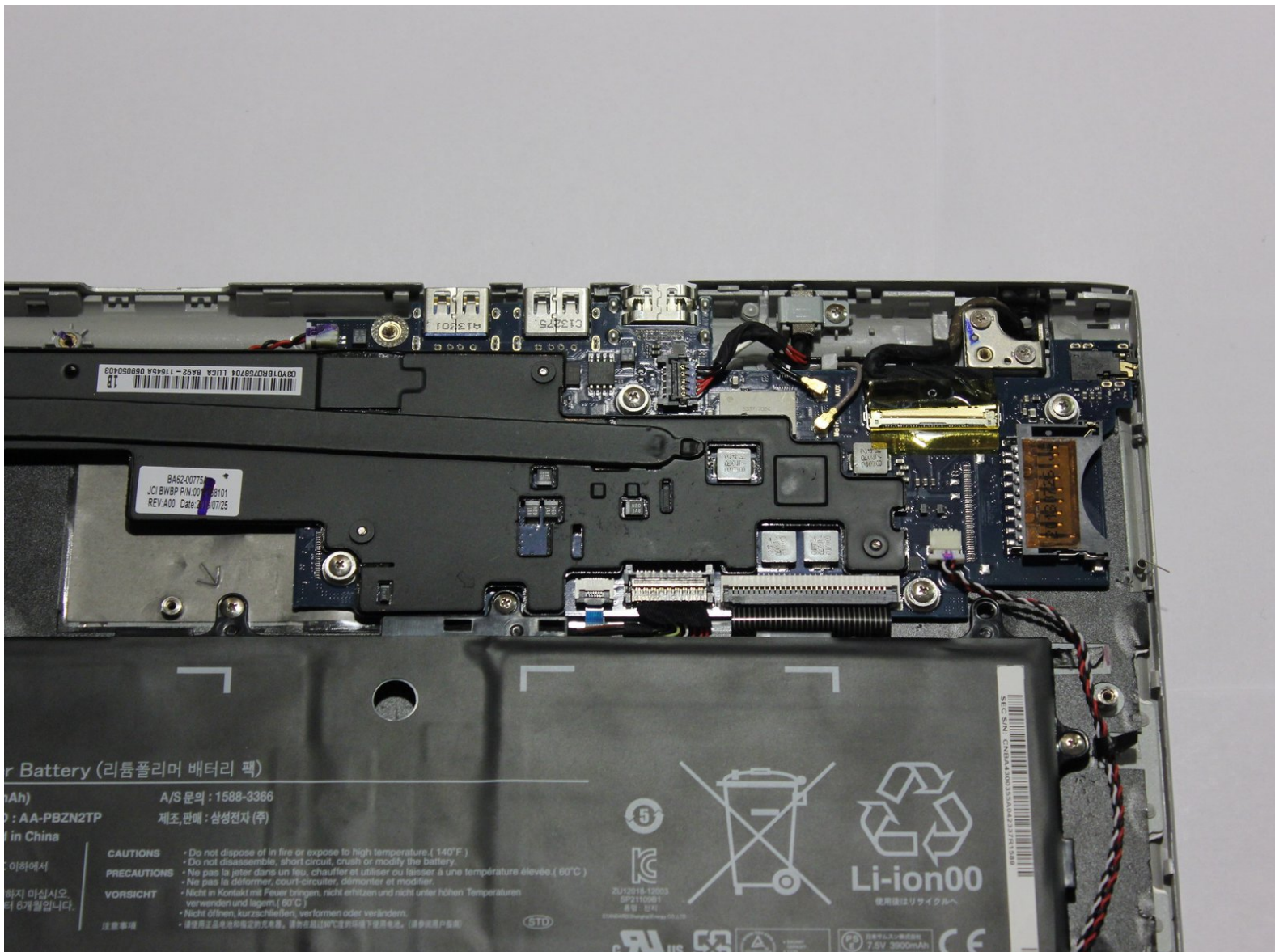




# Samsung Chromebook Series 3 Charging Port Replacement

If your charger port is broken, this guide will...

Written By: Andrey Radchishin



## INTRODUCTION

If your charger port is broken, this guide will teach you how to take apart your Chromebook and replace the faulty port.



### TOOLS:

- [Phillips #00 Screwdriver](#) (1)
- [iFixit Opening Tool](#) (1)



### PARTS:

- [Samsung Chromebook XE303C12 DC-In Jack](#) (1)

## Step 1 — Bottom Cover



- Lay the Chromebook down so that the bottom cover is facing up.
- Remove the rubber feet on the four corners of the Chromebook in order to get to the screws underneath. They are stuck on with an adhesive.

## Step 2



- Remove the nine 4.7 mm screws on the bottom cover using a Phillips #00 screwdriver.

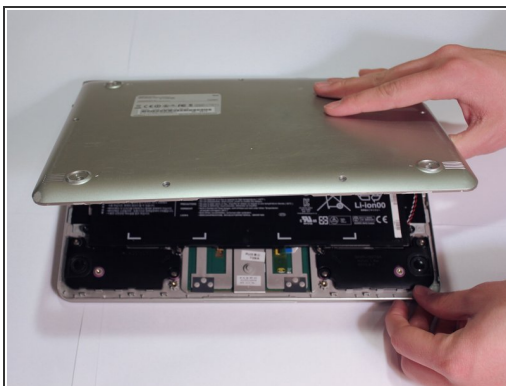


## Step 3



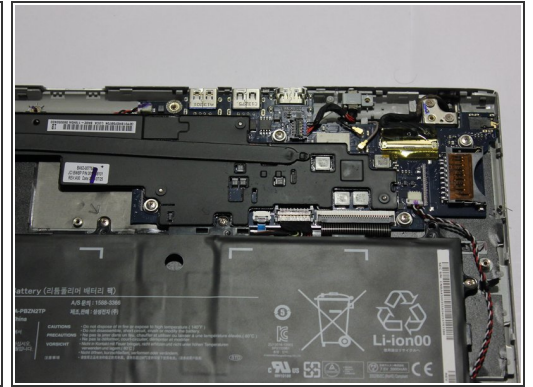
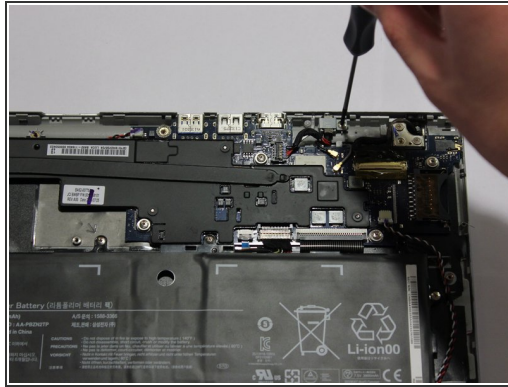
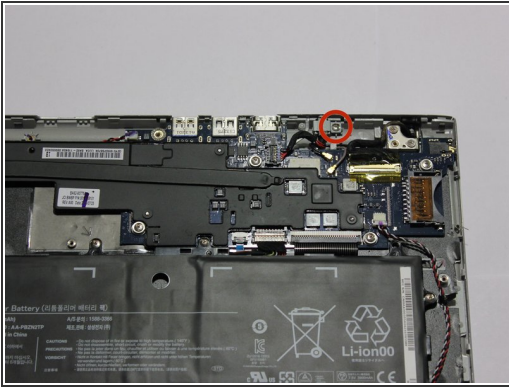
- Pry up the plastic strip on the back of the Chromebook using a plastic opening tool.
- i** It is not necessary to remove it completely. It just needs to be separated from the bottom cover.

## Step 4



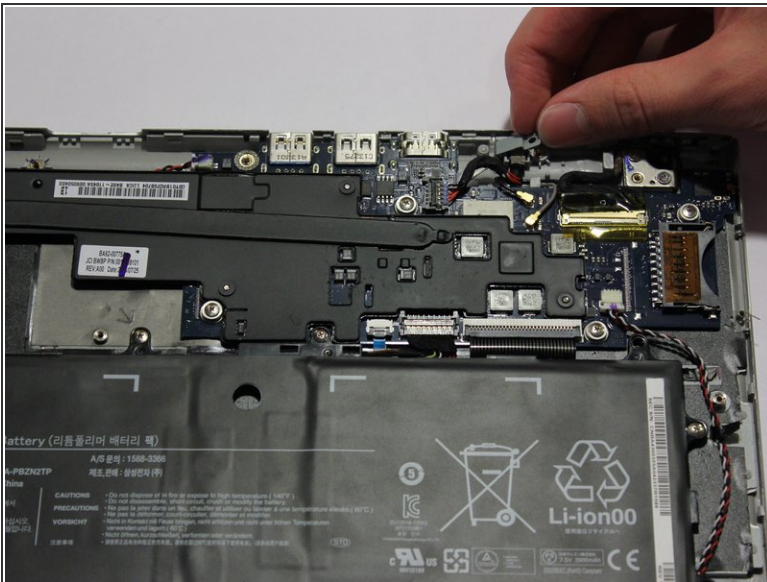
- Pry off the bottom cover using a plastic opening tool.

## Step 5 — Charging Port



- Unscrew the 3.4 mm screw holding down the charging port module using a Phillips #00 screwdriver.

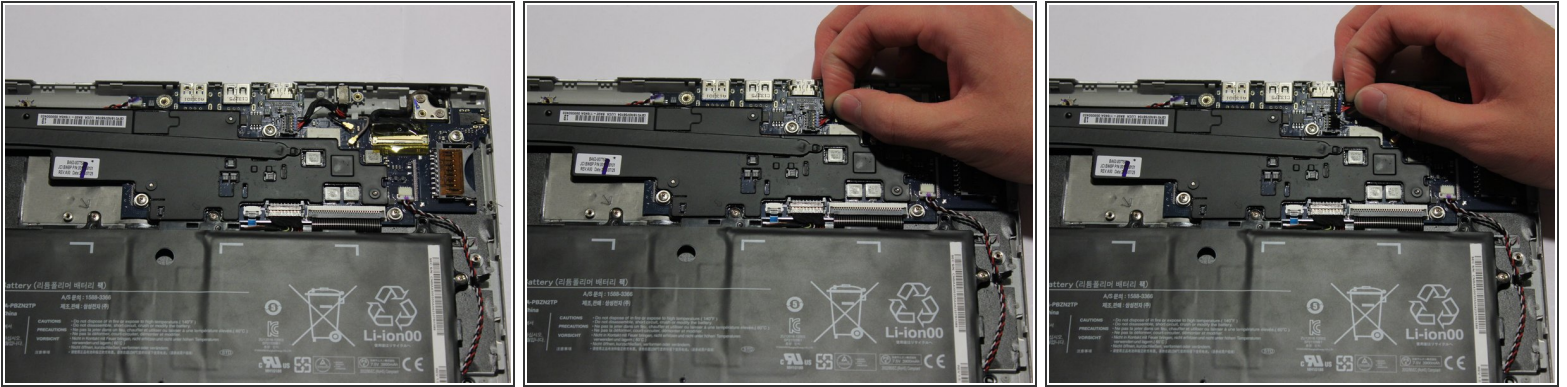
## Step 6



- Remove the metal cover above the charging port module by pulling up and moving it slightly left.



## Step 7



- Pull out the charging port module connector by pulling directly up on it.
- ☑ When reassembling, reconnect by positioning the connector directly above its original position and pushing down.

## Step 8



- You can now pull out the charging port module.

To reassemble your device, follow these instructions in reverse order.