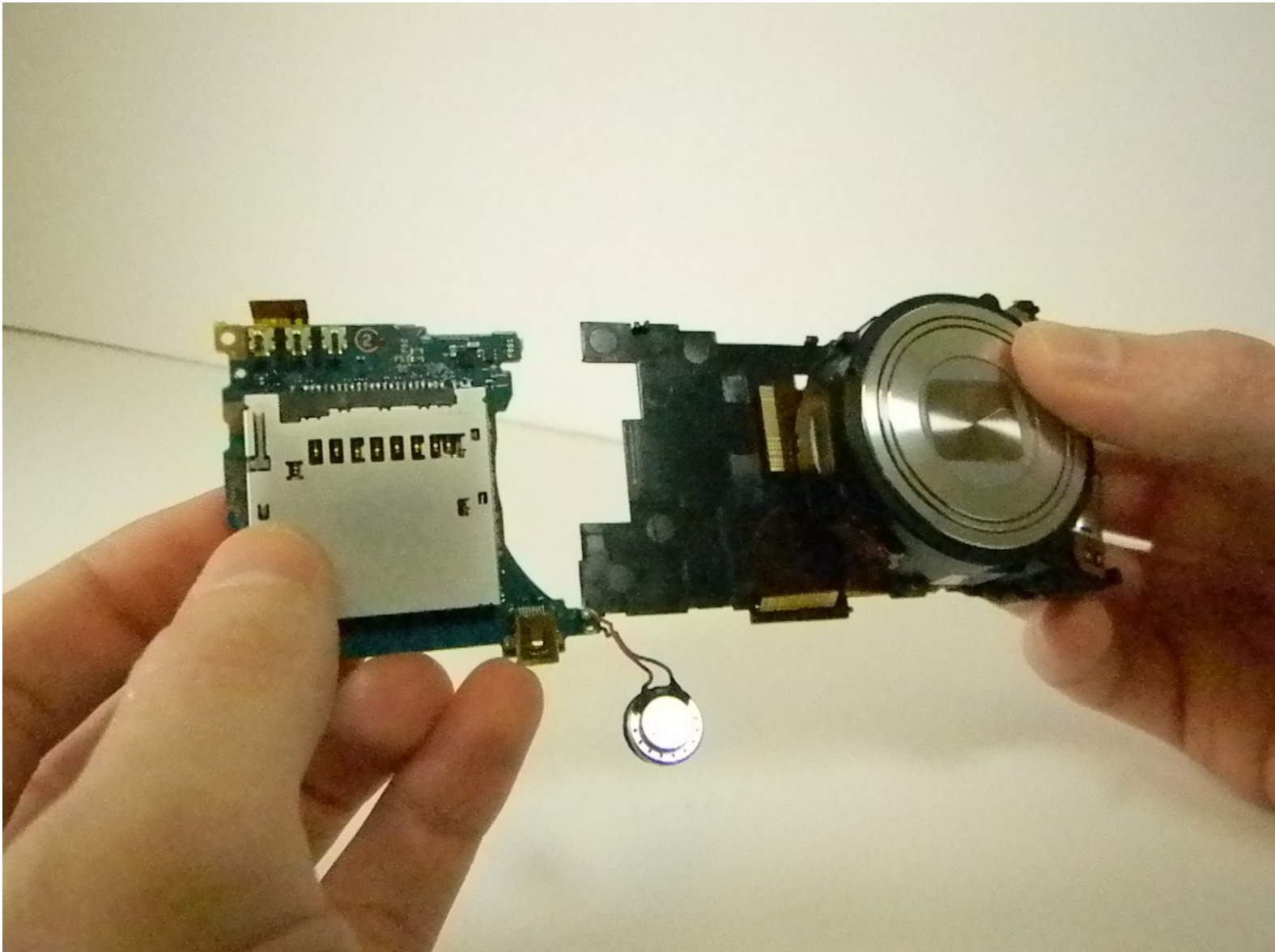




# Sony Cyber-shot DSC-W730 Mother Board Replacement

This guide focuses on replacing the motherboard.

Written By: Douglas Howe



---

## INTRODUCTION

The motherboard is one of the hardest components on the camera to replace. Be very careful when taking apart the ribbons, you could accidentally damage other parts of the camera.

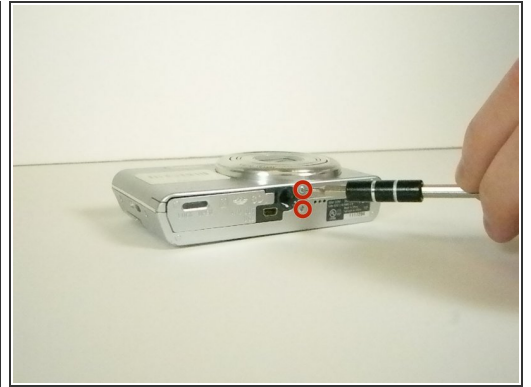
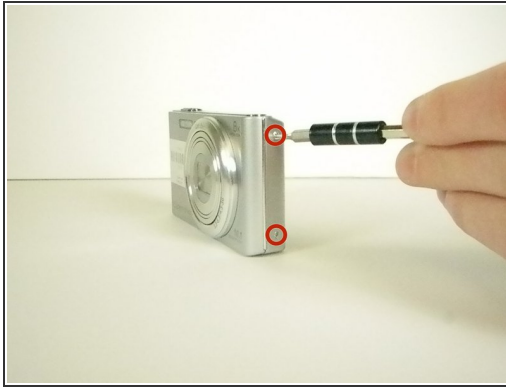
---



### TOOLS:

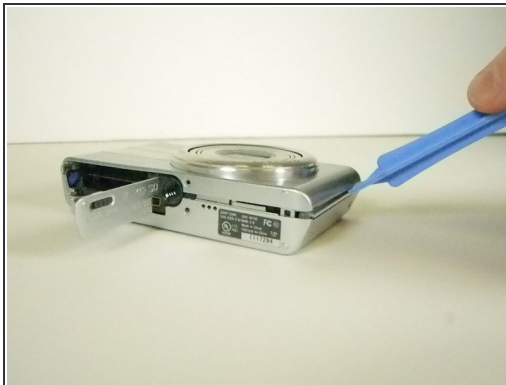
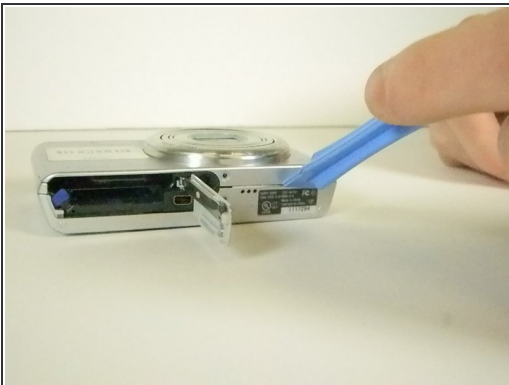
- [Phillips #000 Screwdriver](#) (1)
  - [iFixit Opening Tools](#) (1)
  - [Spudger](#) (1)
-

## Step 1 — Removing the Case



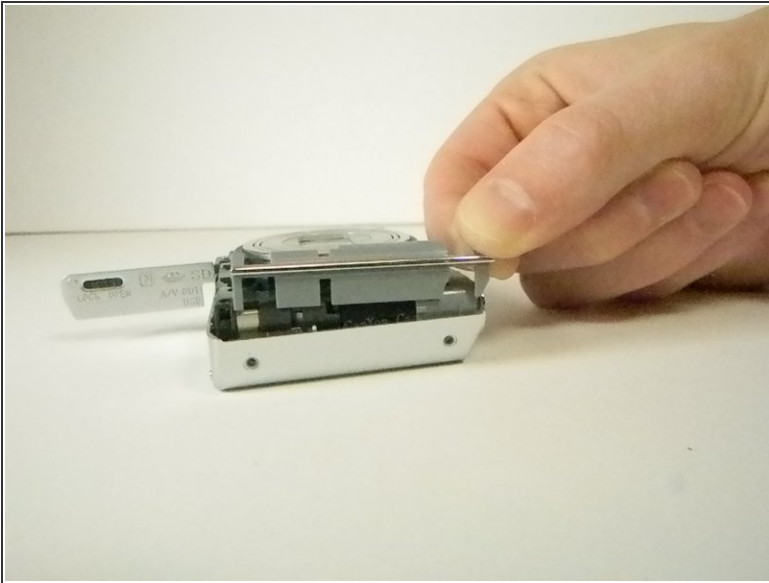
- Open the battery/memory card door and remove the 6 screws (.35cm) with a Philips 000 screwdriver. There will be two screws on the left and right sides, and two on the bottom.

## Step 2



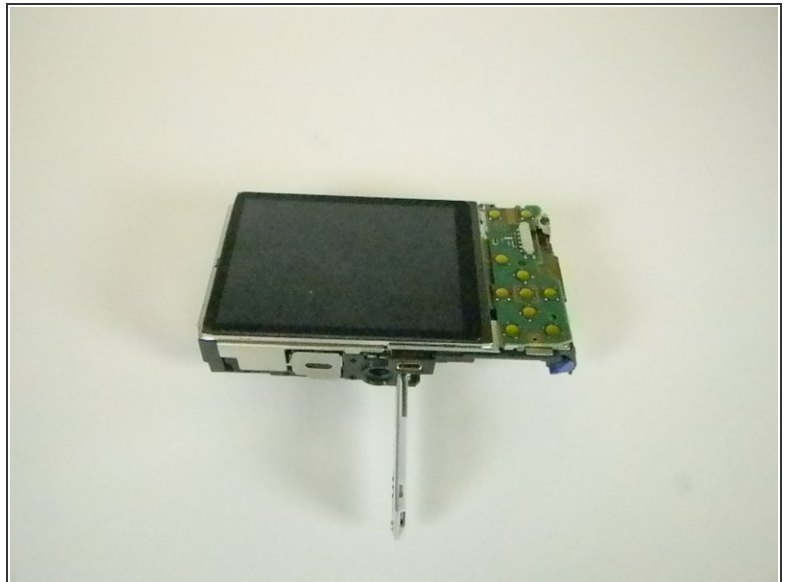
- Take off the front part of the case with a plastic opening tool.

### Step 3



- Pull off the two silver side pieces on the left and right sides.

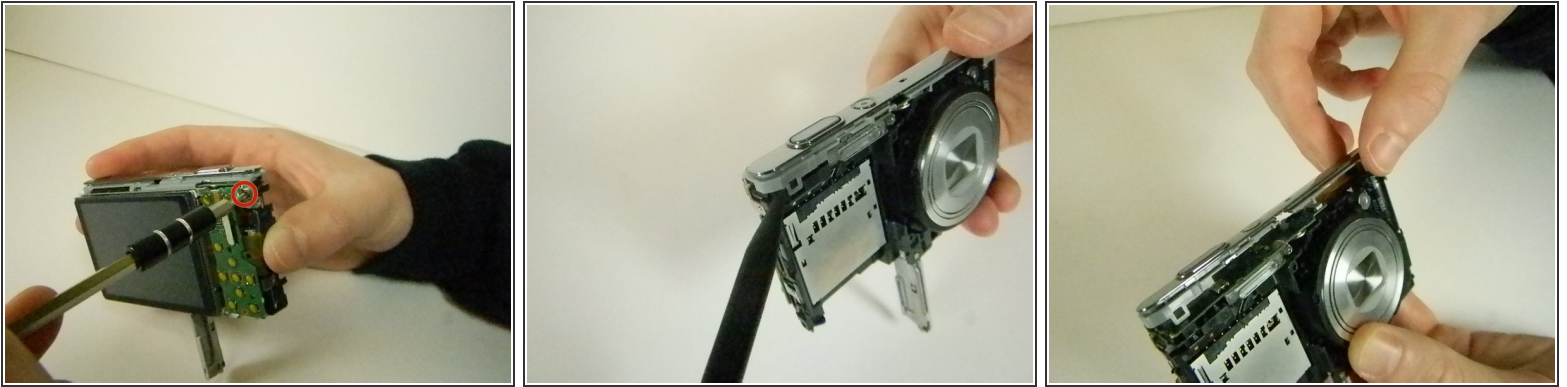
### Step 4



- Remove the main back piece. It should easily lift off.

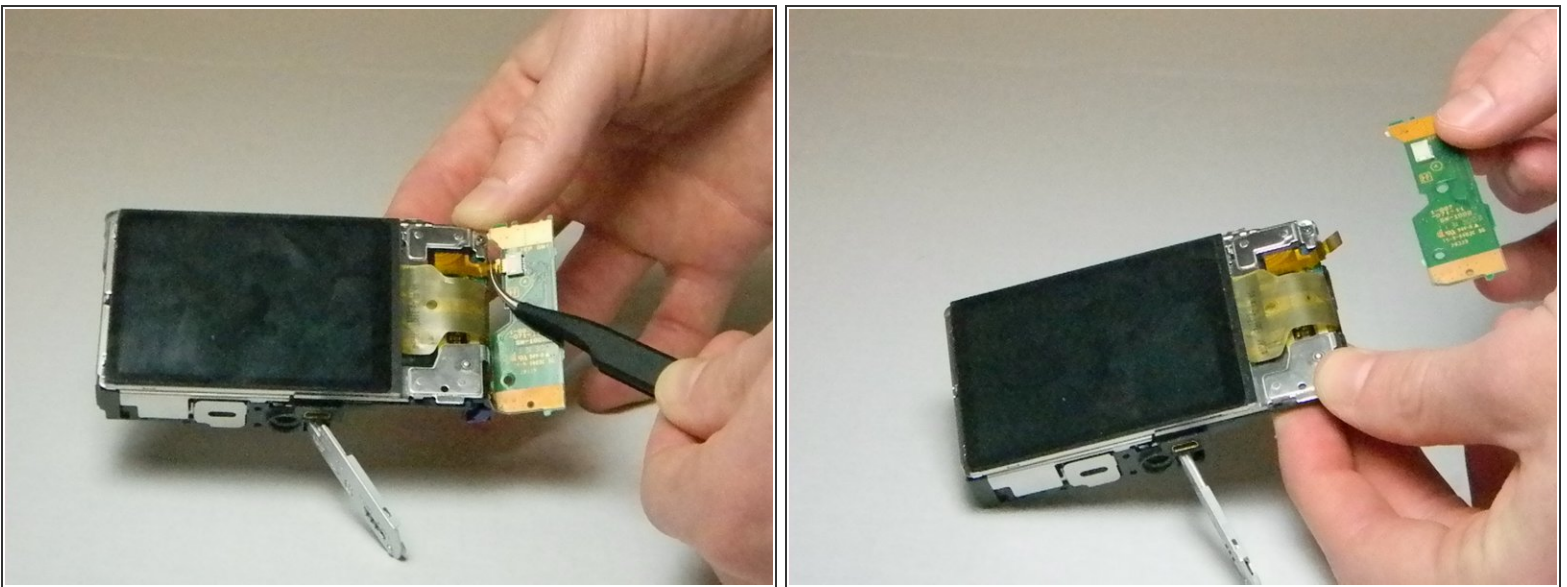


## Step 5



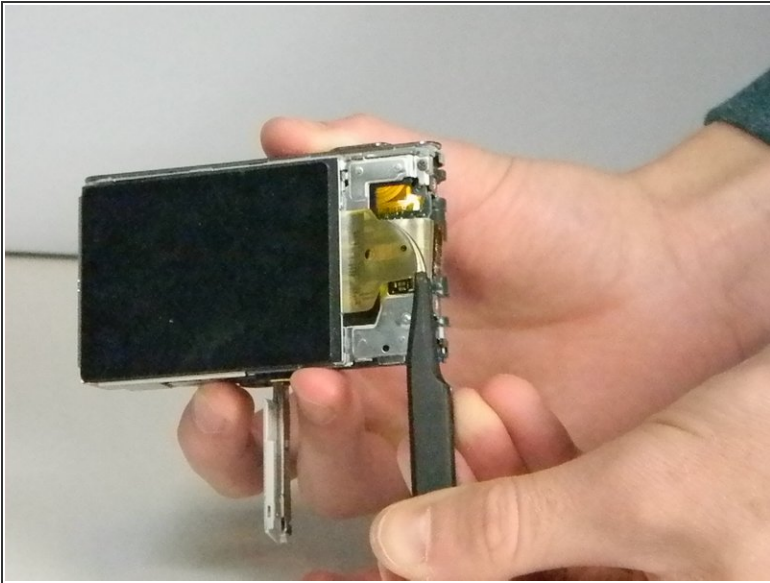
- Unscrew the .45cm screw located on the upper right corner on the back of the camera. Once the screw is off, use the spudger and unclip the piece holding the top down on the upper left on the front of the camera. It should lift off with ease.

## Step 6 — LCD Control Board



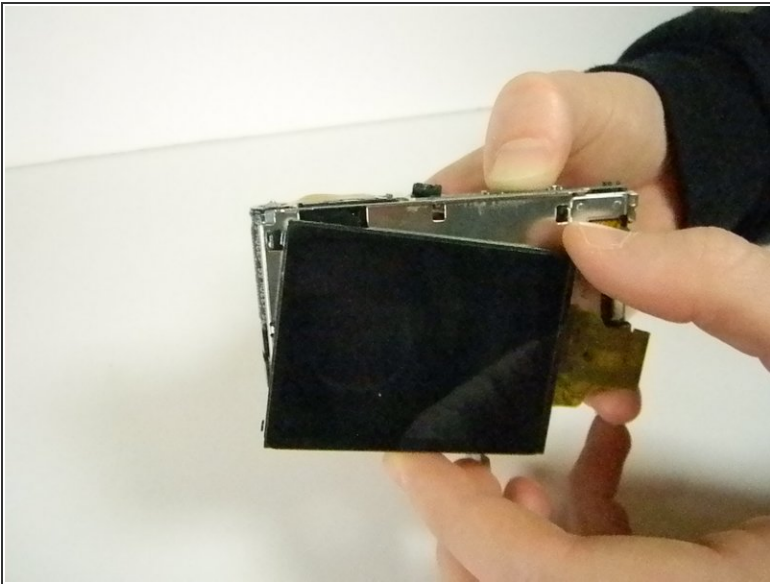
- Flip over the control board then use tweezers to pull out the ribbon connecting the circuit board to the motherboard.

## Step 7 — LCD Screen



- Use tweezers to remove the ribbon that is connected from the LCD screen to the camera by pulling the part that is folded under, out.

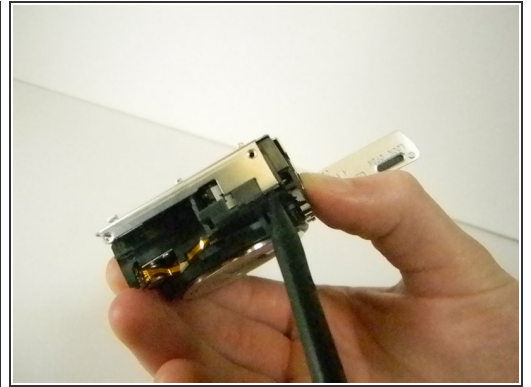
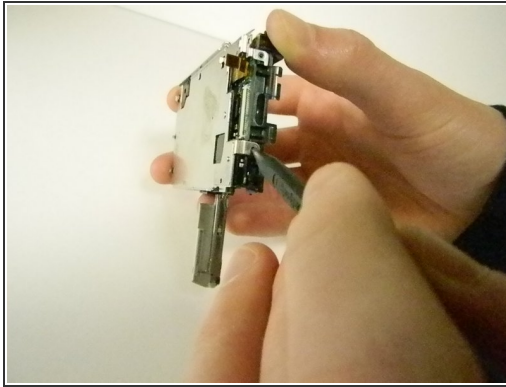
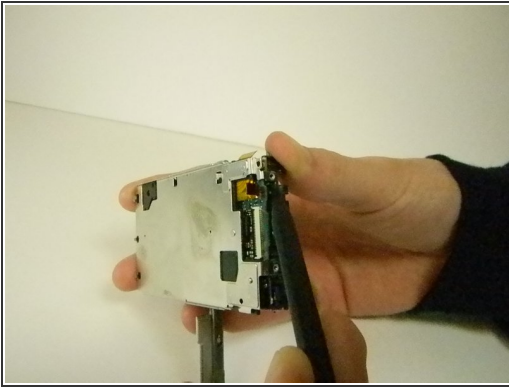
## Step 8



- Slide the right side of the LCD screen clockwise, which will push it off the camera. The rest of the screen should come off with it with ease.

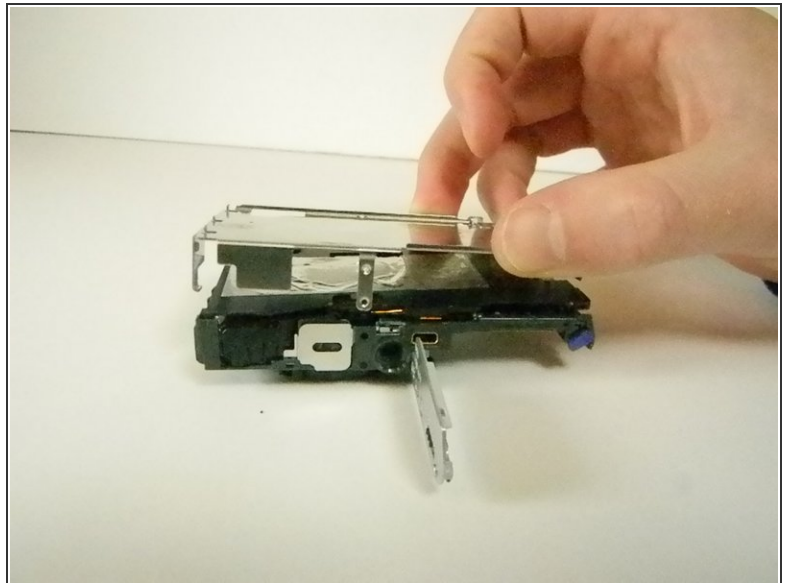
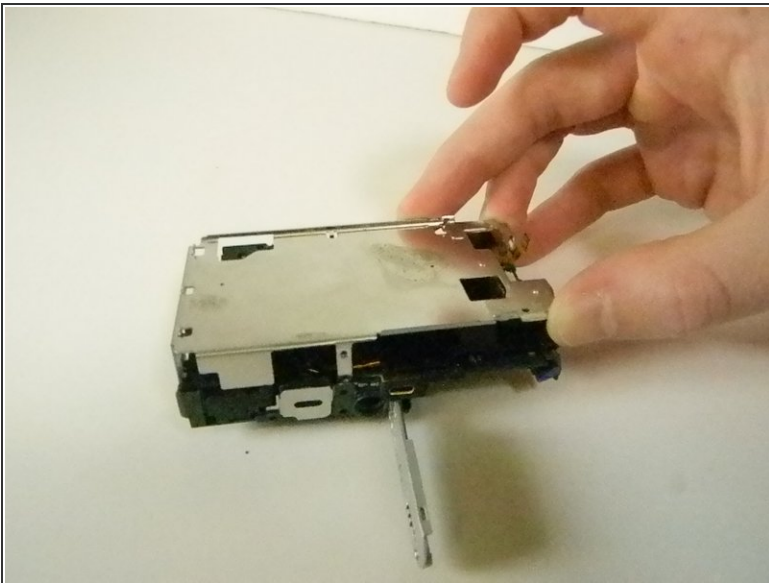


## Step 9 — Mother Board



- After the screen is off, work the spudger under three clips to remove the metal plate.

## Step 10



- After the clips are disengaged, lift off the metal cover.

## Step 11



- Use the spudger and disengage the black plastic clip located on the bottom right of the camera facing the lens.

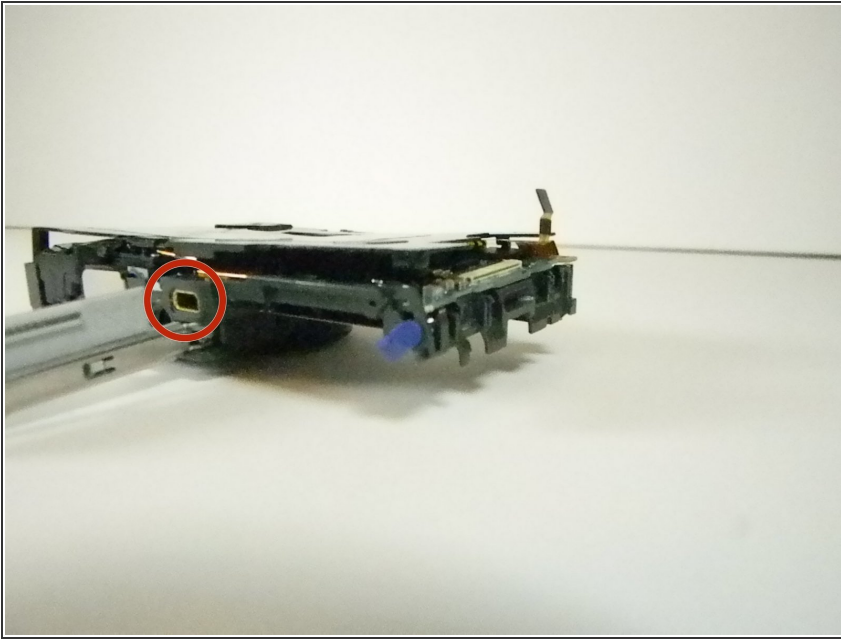
## Step 12



- Flip the camera over, facing the bottom of the camera towards you. Then use the spudger to detach the plastic clip on the right, near where the LCD control board was.

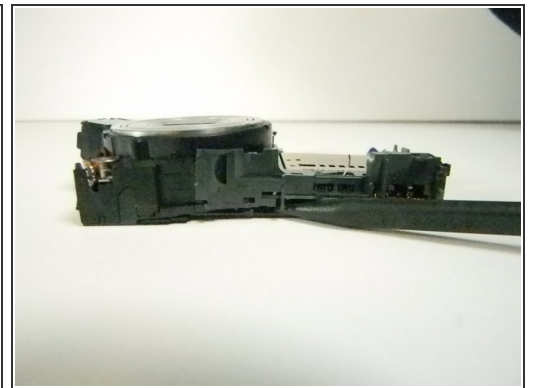
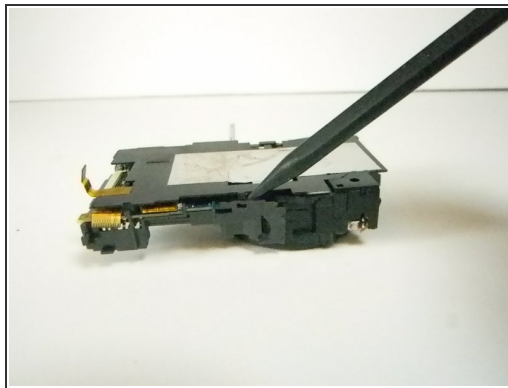
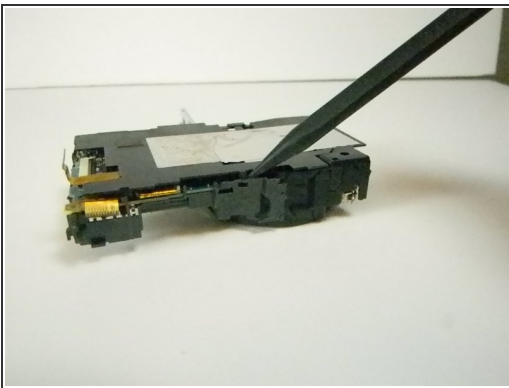


## Step 13



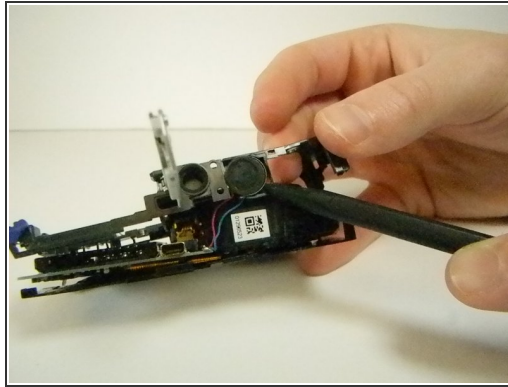
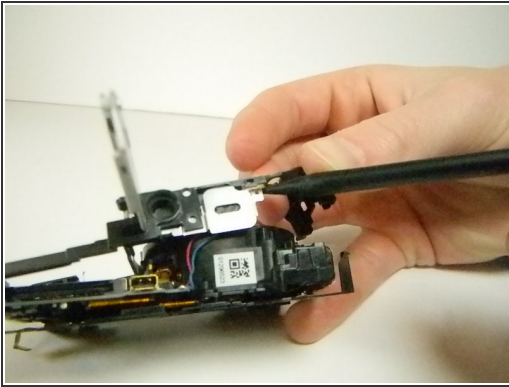
- Use the spudger and slide the plastic case over the mini USB port.

## Step 14



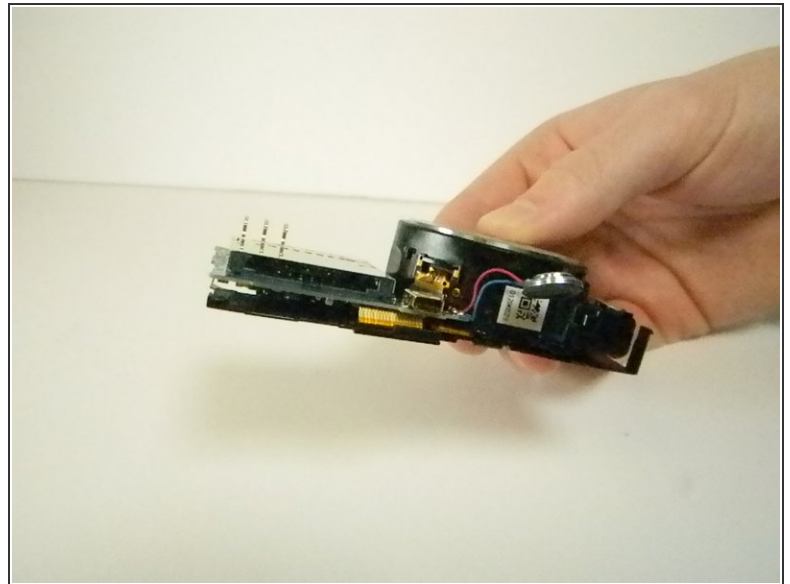
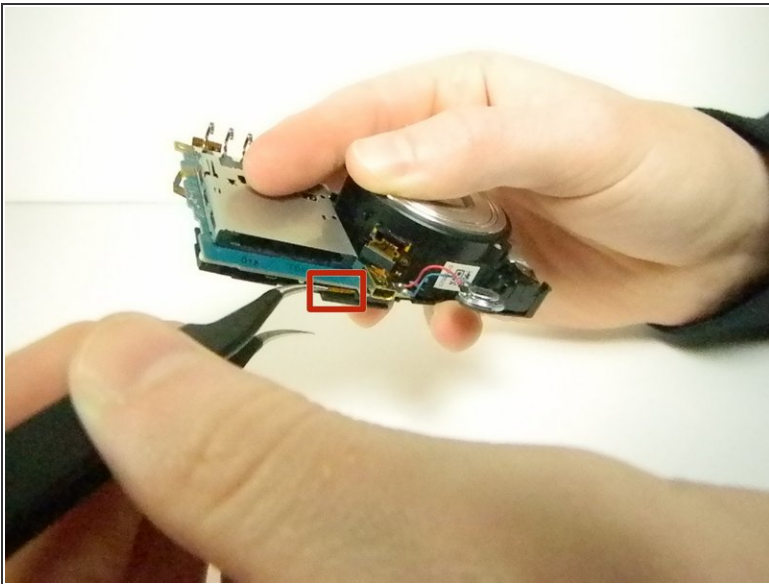
- Use the spudger to disengage the plastic clip on the top of the camera.

## Step 15



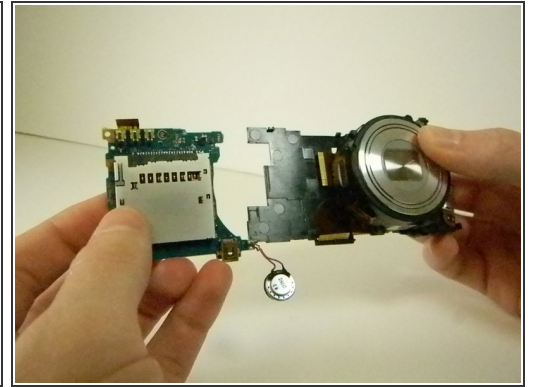
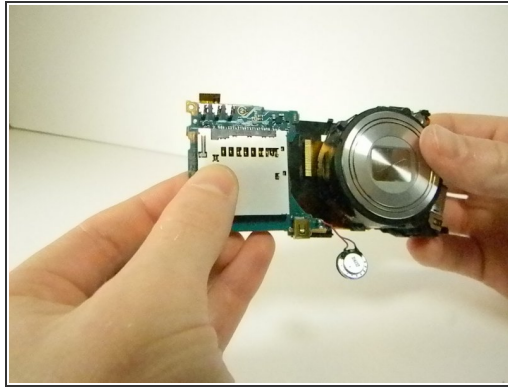
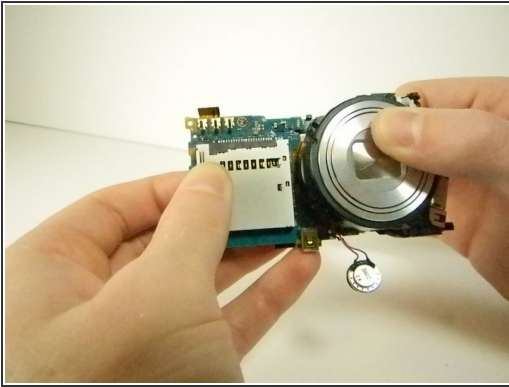
- Use the spudger and separate each end of the metal piece. Once the speaker is free you can lift off the plastic frame.

## Step 16



- Use tweezers to disconnect the ribbon located under the motherboard near the bottom of the camera.

## Step 17



- Now with one hand located on the plastic skeleton and the other on the motherboard pull the motherboard to the left to disconnect the last ribbon.

To reassemble your device, follow these instructions in reverse order.