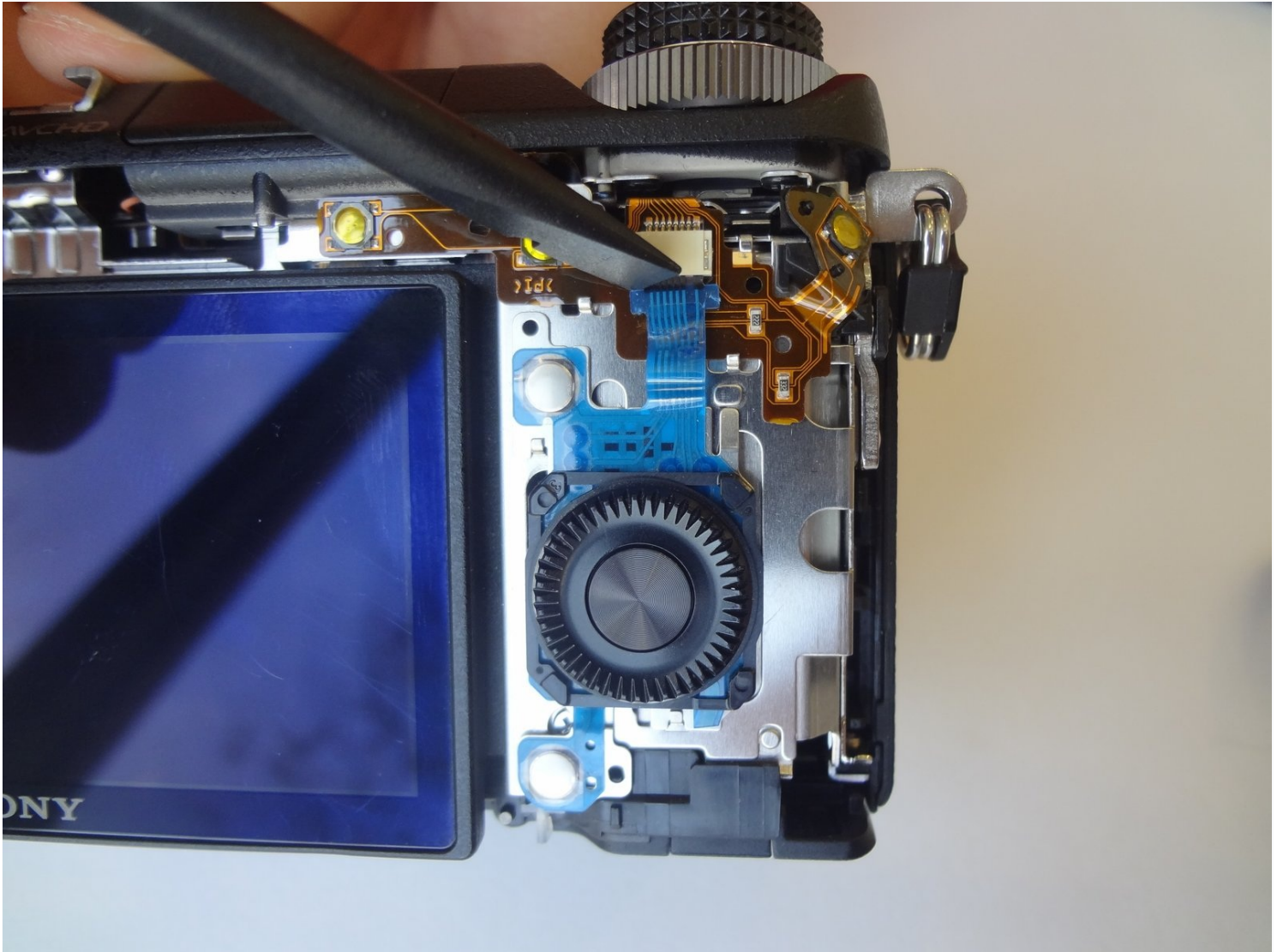




Sony Alpha NEX-6 Control Wheel Replacement

This guide will illustrate how to dis-assemble...

Written By: Clayton Dale



INTRODUCTION

This guide will illustrate how to dis-assemble the back camera case to gain access the control wheel assembly. Then it will show how to replace the control wheel and adjacent soft keys.

TOOLS:

[Phillips #00 Screwdriver](#) (1)


[iFixit Opening Tool](#) (1)

[Spudger](#) (1)

[Tweezers](#) (1)

Step 1 — Battery



 Prior to operating on this device, be sure the camera is turned **OFF**. With power, the camera can be a dangerous device to work with.

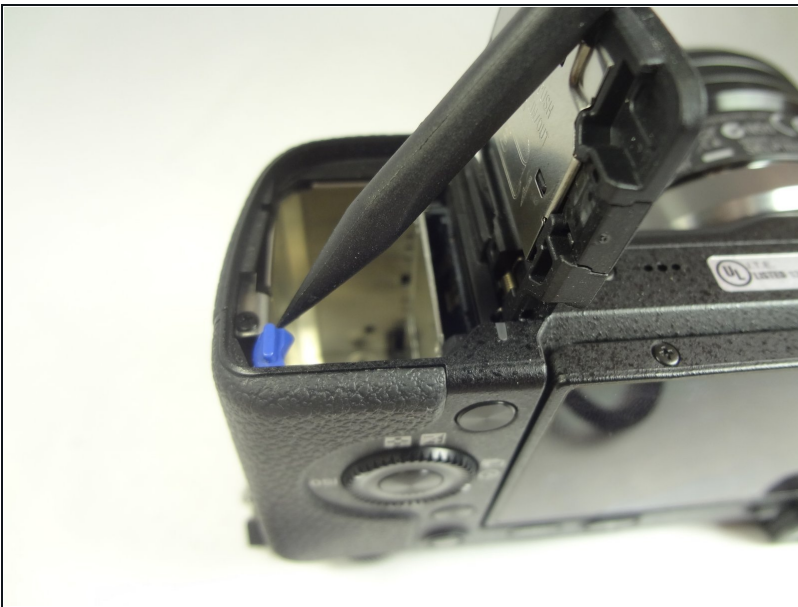
- Turn the camera off by switching the power knob "OFF" text to the white selector dot.

Step 2



- Flip the camera upside-down and carefully place it on a flat surface.
- With the lens facing outward, locate the battery compartment - indicated by a grooved latch.
- Push the latch to the right to unlock the battery compartment. The door should flip upward.

Step 3



- With the compartment open, locate a blue tab shown with spudger
- Press the tab to the side (to the left, or toward the camera wall). This will eject the camera battery.

Step 4 — Battery compartment screws



- Remove the two 3.5mm Phillips #00 screws that hold the back case - located inside the battery compartment.

Step 5 — Bottom screws



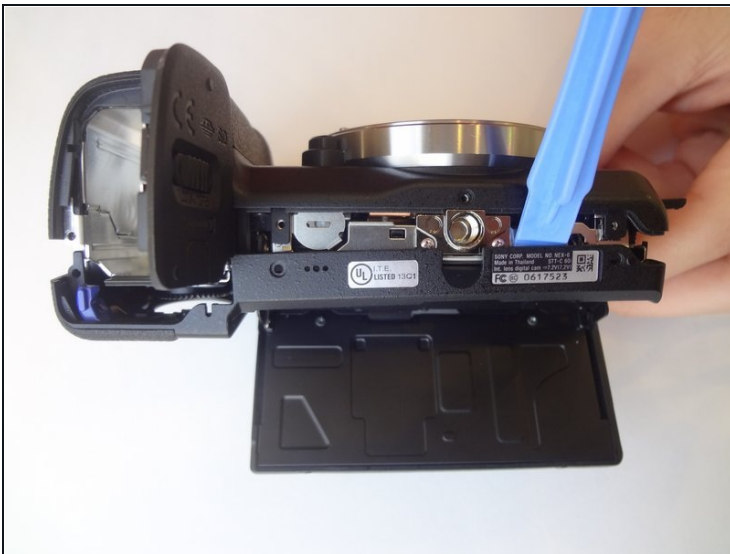
- Remove the two 3.5mm Phillips #00 screws that hold the back case - located on the bottom of the camera.

Step 6 — Side screws



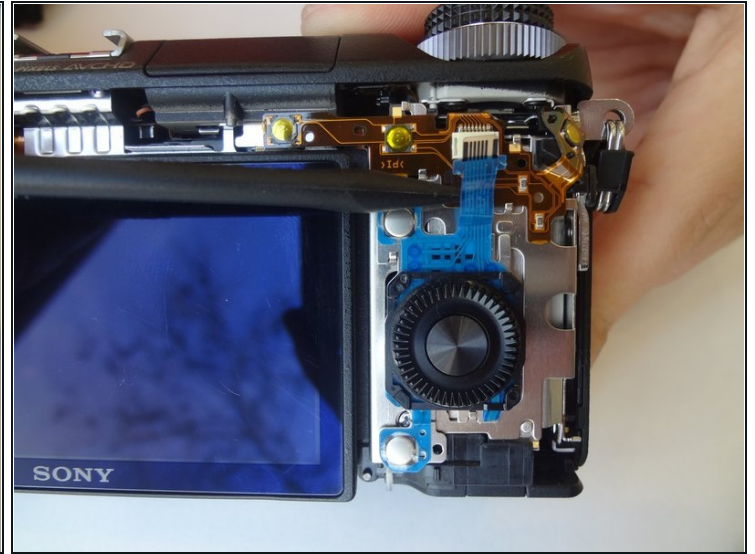
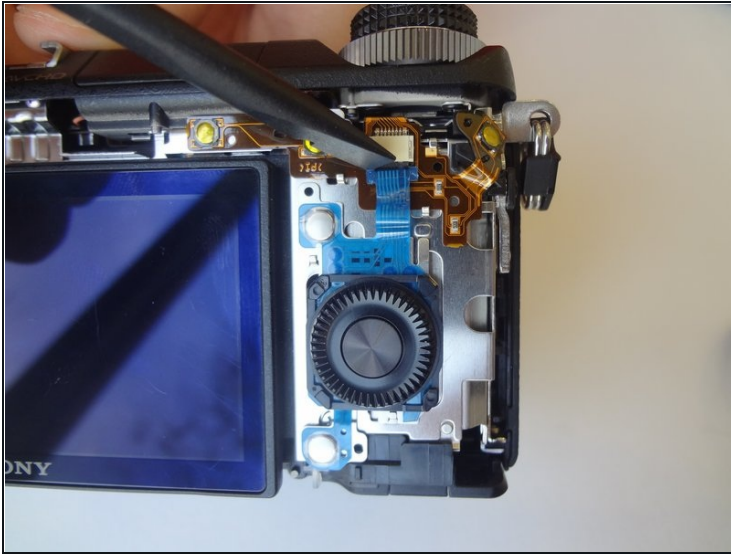
- Remove the 3.5 mm Phillips #00 screw on the side of camera - located between the charging and HDMI ports.
- Remove the 4.0 mm Phillips #00 screw on the side of the camera - located next to the WiFi sign.

Step 7 — Dis-attaching procedure



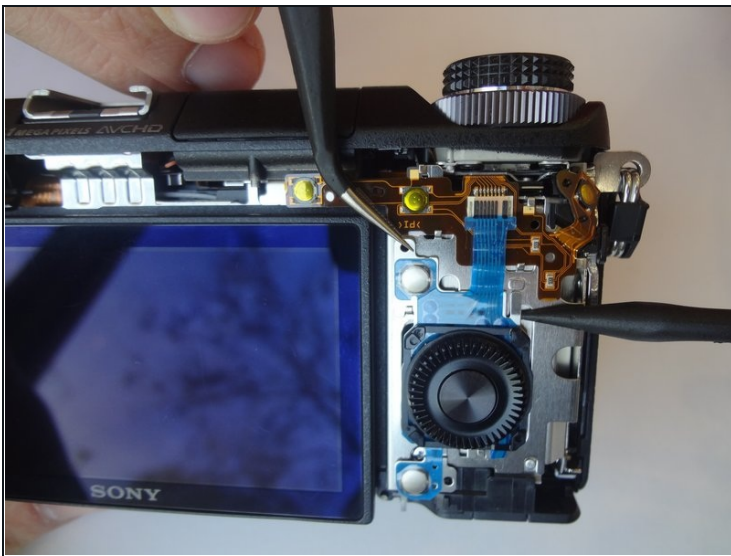
- Starting with the battery compartment gently begin to separate the back case front the camera.
- Using a plastic opening tool, separate the bottom of the back case from the camera. Then proceed by separating the sides.
- Gently lift the back case away from the camera an slide it down to completely remove the back case.

Step 8 — Control Wheel



- Pry out the ribbon cable by carefully pushing on its side tabs with a spudger.

Step 9 — Control wheel removal



- Using a spudger, lift the metal locking tab located at the top right corner of control wheel assembly.
- Using [tweezers](#), carefully slide the assembly up to release it.

To reassemble your device, follow these instructions in reverse order.

