



Nikon Coolpix L810 Motherboard Replacement

Remove the motherboard from your Nikon Coolpix L810.

Written By: Emilio Mena



INTRODUCTION

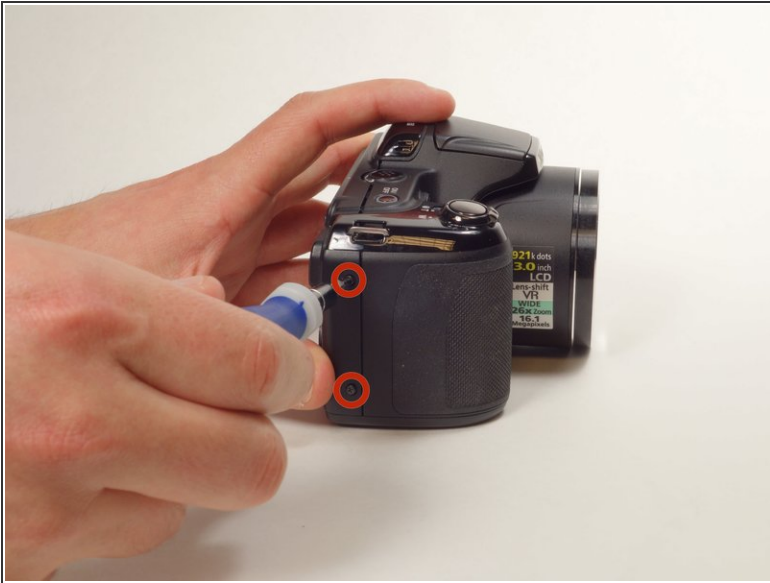
The motherboard is what makes the camera work. If your camera stops working, follow this guide to replace the motherboard.




TOOLS:

- [Phillips #000 Screwdriver](#) (1)
 - [Soldering Workstation](#) (1)
-

Step 1 — LCD



- Remove two 5 mm Phillips #000 screws on the right hand side of the camera located near the power button.

 Use of precision tweezers to help remove loosened screws is suggested.

Step 2



- Remove two 5 mm Phillips #000 screws near the audio/video inputs on the opposite side near the flash component.

Step 3



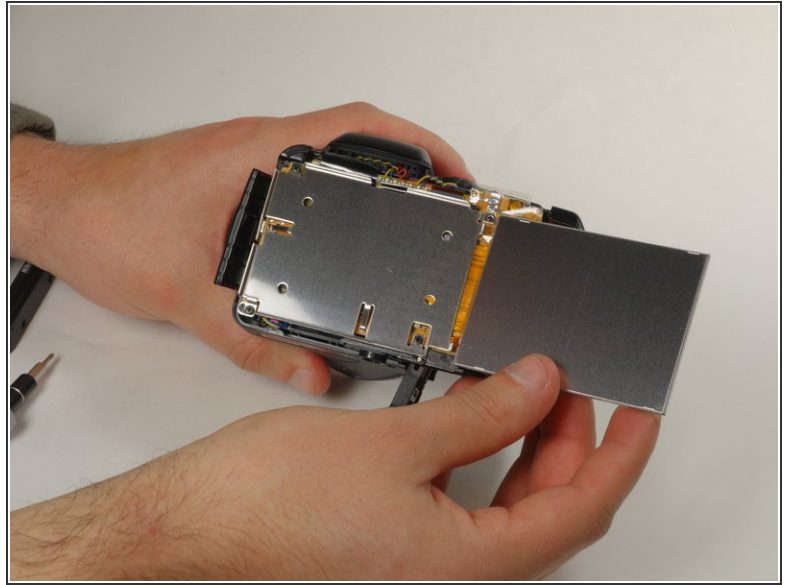
- Remove three 5 mm Phillips #000 screws on the bottom end of the camera.

Step 4



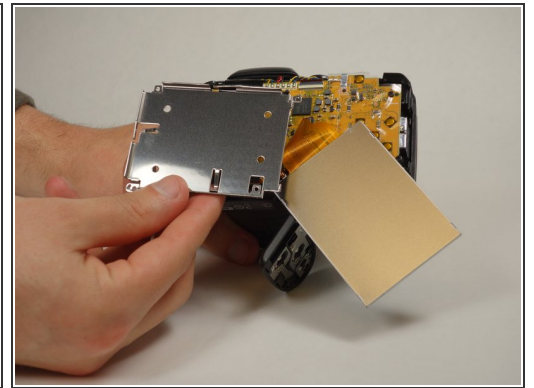
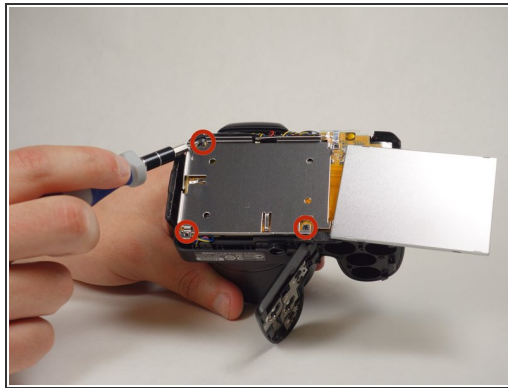
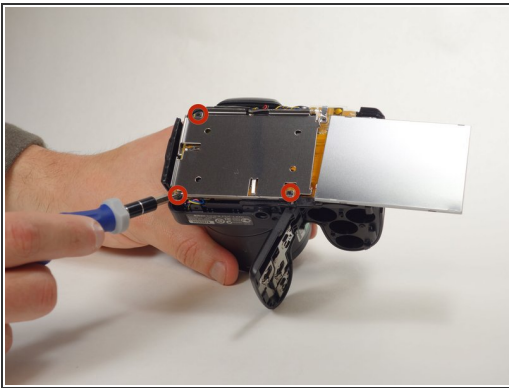
- Carefully detach the back side of the camera by lifting both ends, with moderate force wobble until loosened enough to remove.

Step 5



- With the LCD screen facing towards you, flip the screen to the right.

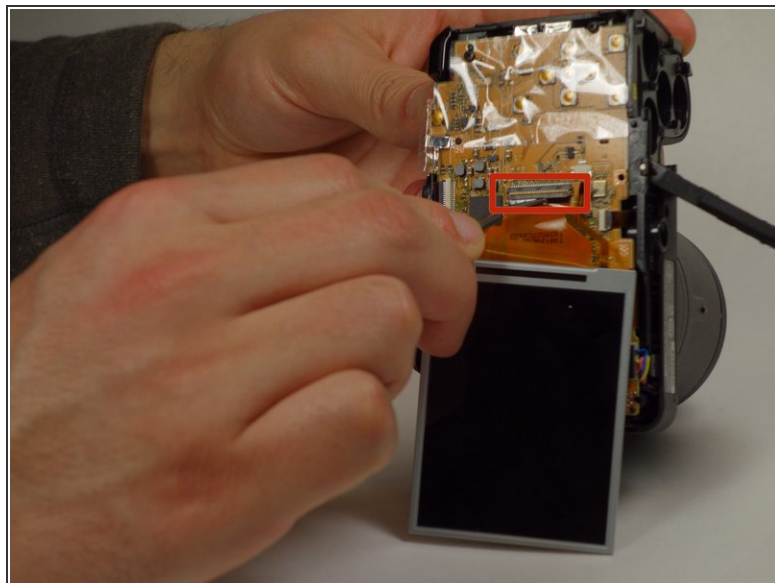
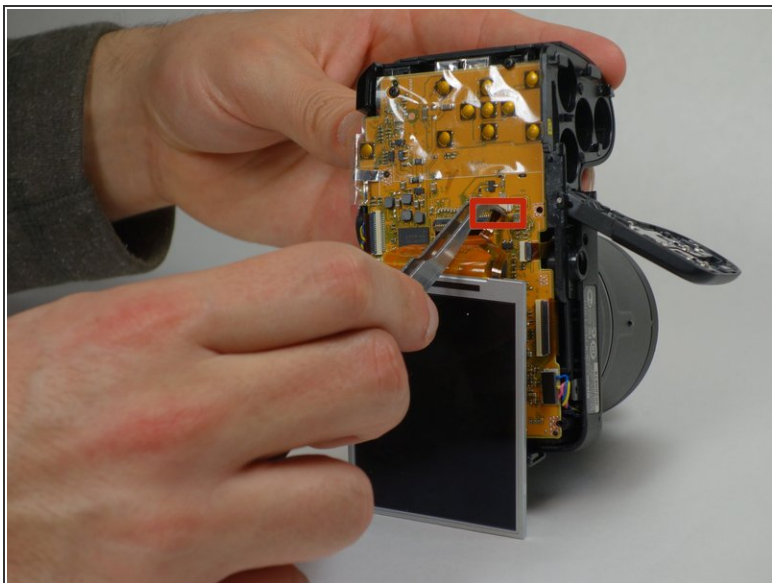
Step 6



- Remove three 5 mm Phillips #000 screws located on the bracket.

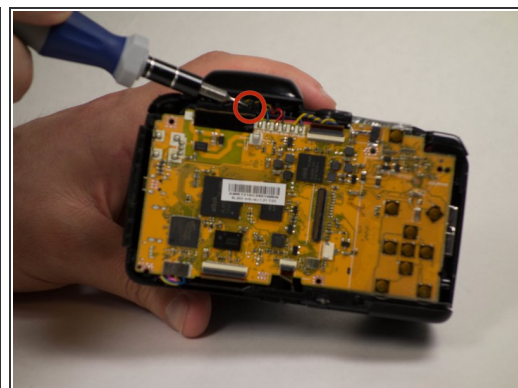
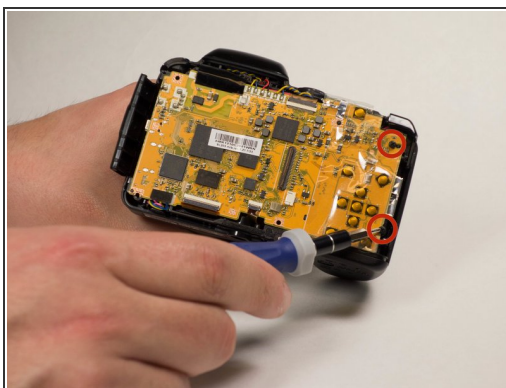
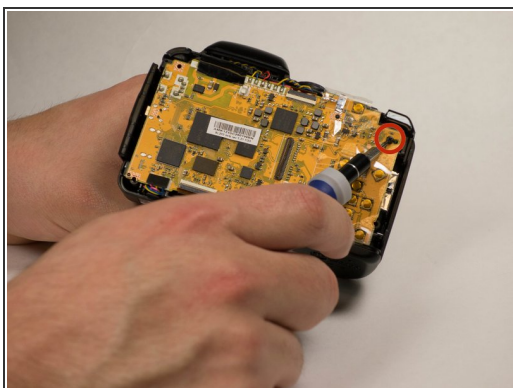
⚠ Hold the camera with the lens facing downward to prevent the bracket from falling off once all screws are removed.

Step 7



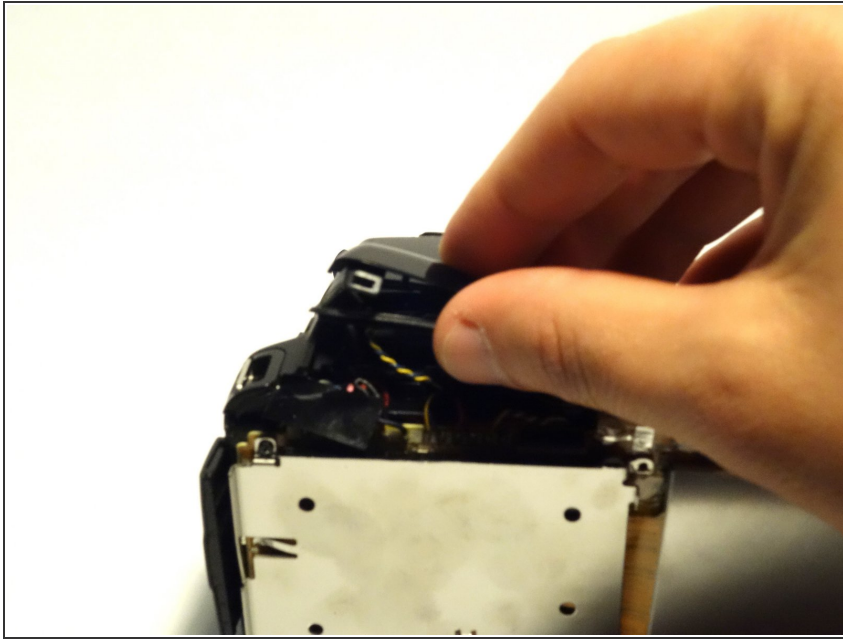
- Disconnect the ribbons that connect the LCD screen to the camera gently using precision tweezers or fingers.

Step 8 — Motherboard



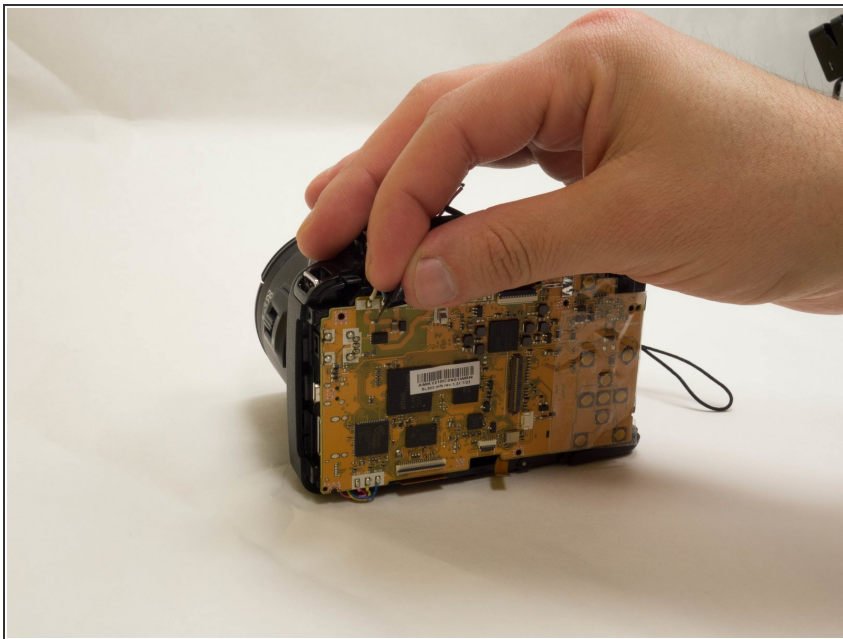
- Remove three 5 mm Phillips #000 screws bordering the motherboard.

Step 9



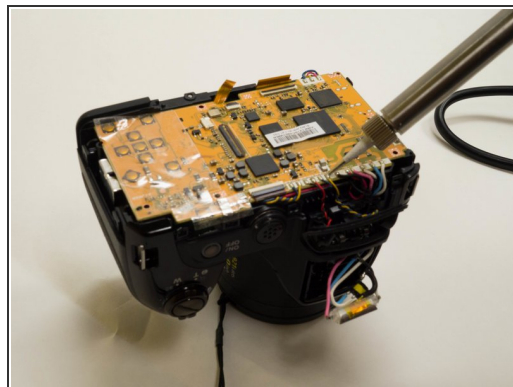
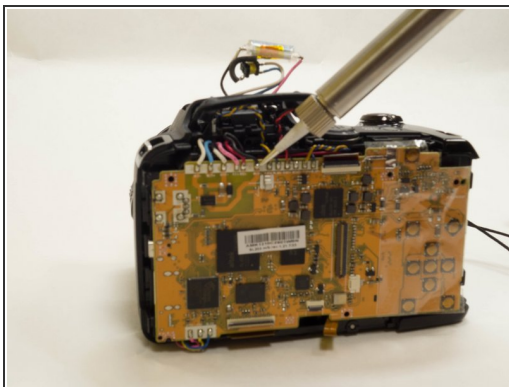
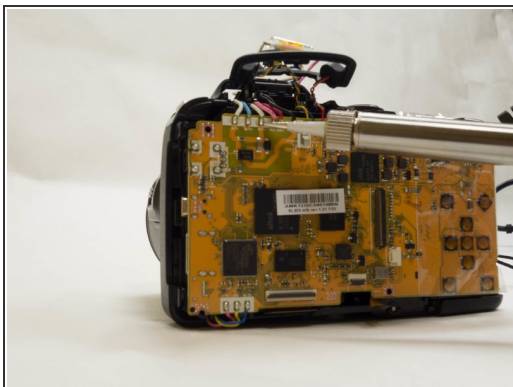
- Remove the plastic component located directly behind the flash from its rubberized holder.

Step 10



- Remove the electric tape covering the wires.

Step 11



- Unsolder all the wires that are on the top of the motherboard near the flash component.

Step 12



- Unsolder the wires on the bottom end of the motherboard.

To reassemble your device, follow these instructions in reverse order.