



# LG 1010 Antenna Replacement

How to replace the antenna in a LG1010 cellular phone.

Written By: Nicholas Schmidt



## Step 1 — Battery



- Turn off the cell phone and place face down on a flat surface.

## Step 2



- While sliding the gray tab up, lift battery up and away from the cell phone.

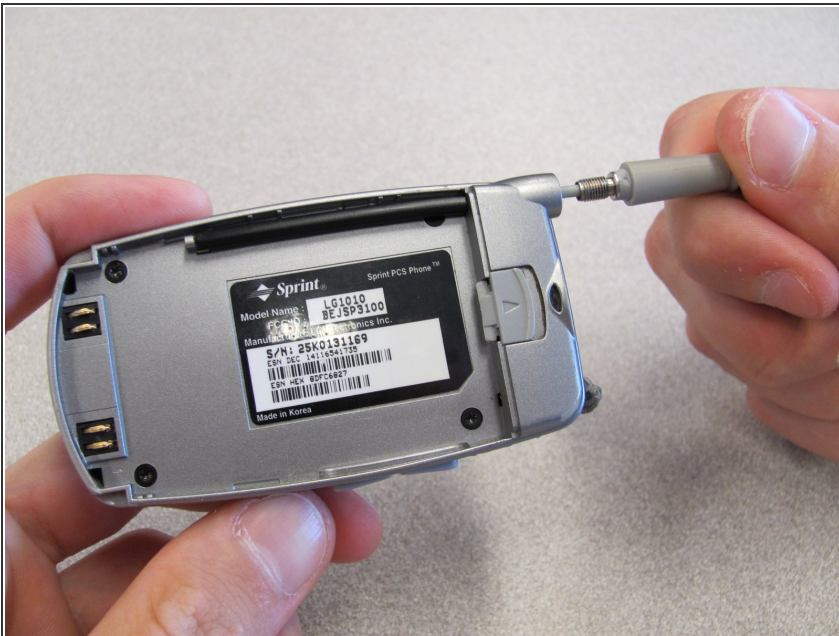


### Step 3



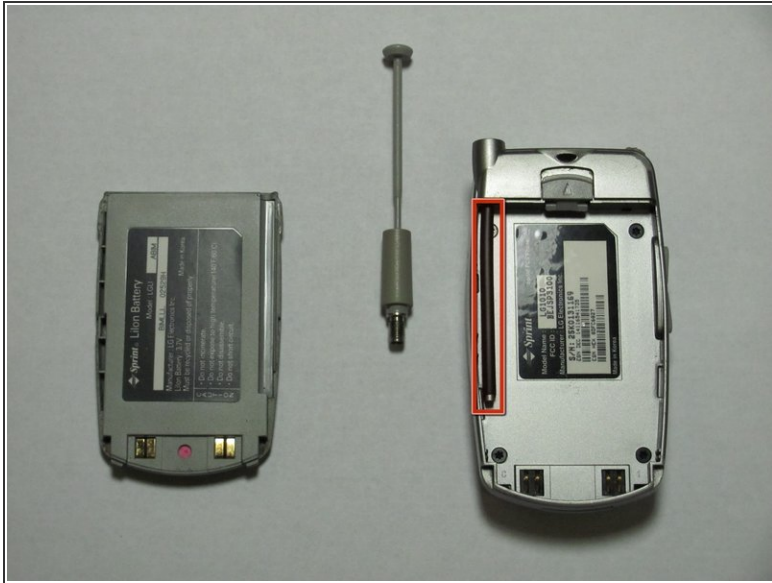
- Remove battery and set aside.

### Step 4 — Antenna



- While holding cell phone firmly in one hand, unscrew and remove the antenna with the other hand.

## Step 5



- Pull the antenna housing (black tube) towards bottom of phone and remove.

To reassemble your device, follow these instructions in reverse order.