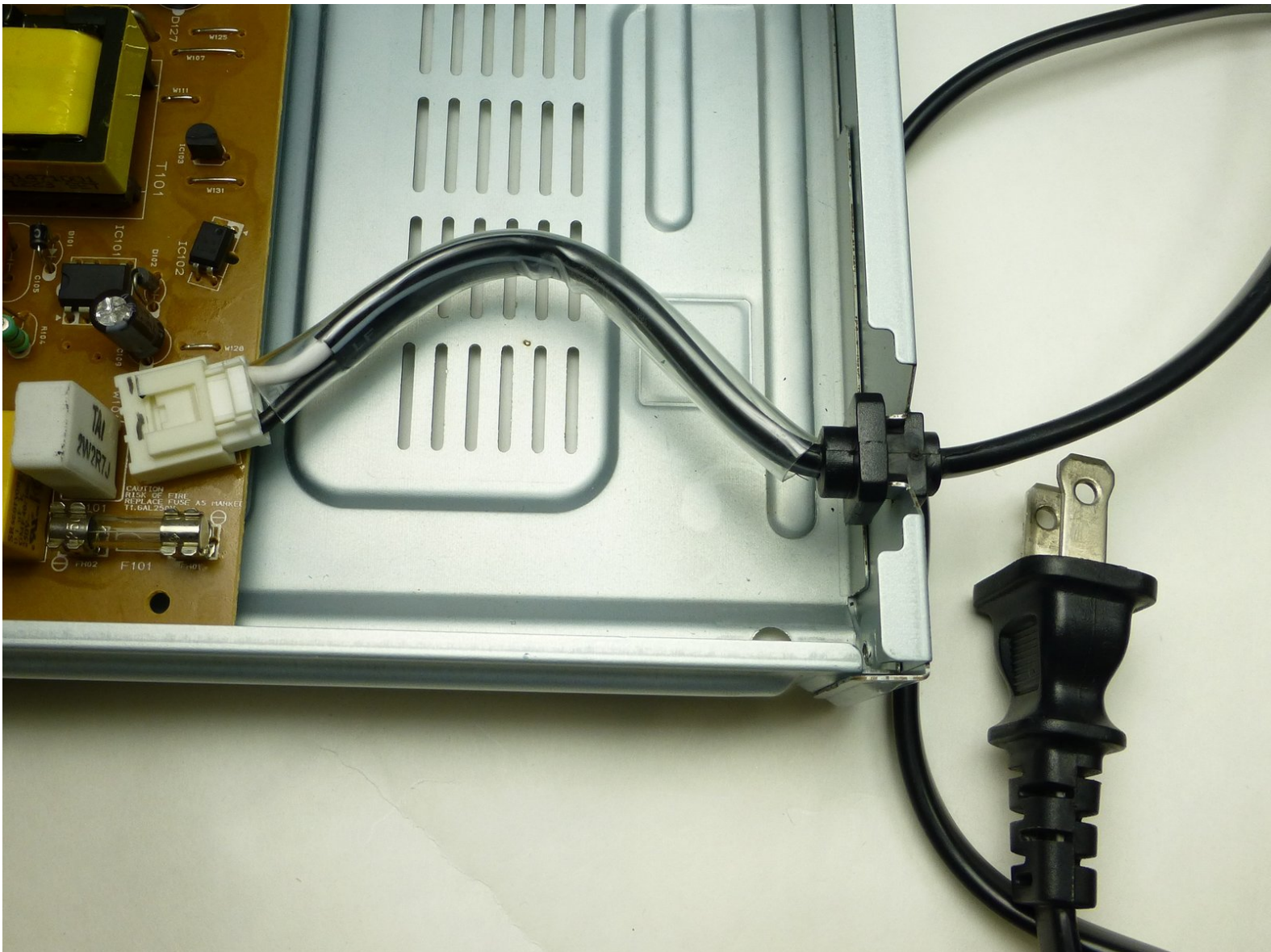




LG BP220 Power Cord Replacement

The removal of the power cord will allow its replacement.

Written By: Bart Quicho



INTRODUCTION

This guide will show you how to open up your Blu-ray player and remove the power cord if it is faulty and causing problems related to powering the device.

TOOLS:

- [Phillips #2 Screwdriver](#) (1)
-

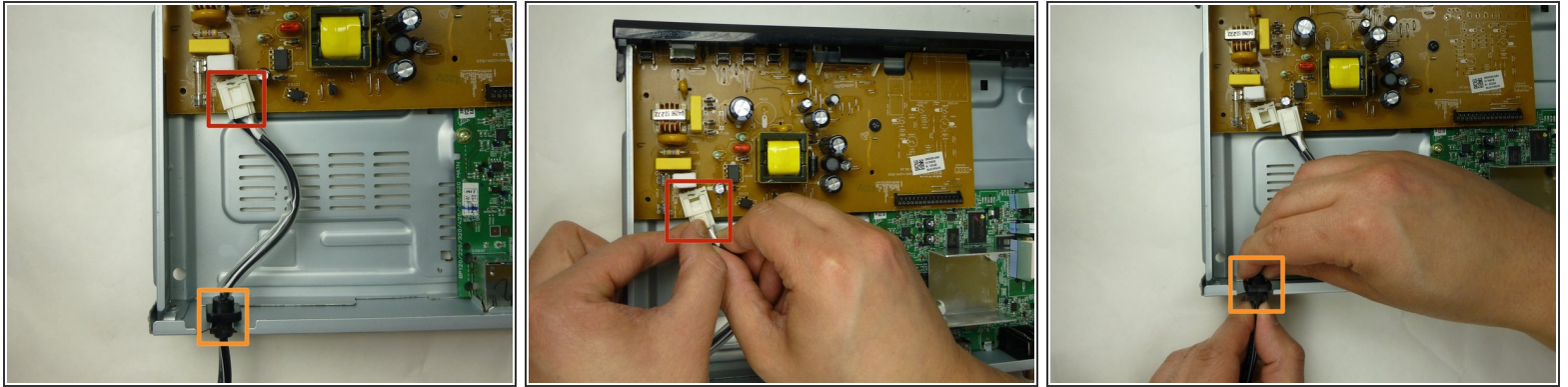
Step 1 — Power Cord




 Ensure the device is unplugged to prevent shocks.

- Remove the three black 3/16" Phillips #2 screws from the backside of the player.
- With the backside (audio/video jacks) facing you, lift the part of the cover closer to you and pull until it is off.

Step 2



 Beware of the capacitors as they may shock you when touched.

- Detach the power supply cord from the brown logic board by pushing the locking clip on the connector, and pulling out.
- ⓘ The connector may be difficult to remove. Wiggling it while pulling out may help release it.
- Remove the power cord from the panel by carefully sliding it upwards from its seating.

To reassemble your device, follow these instructions in reverse order.