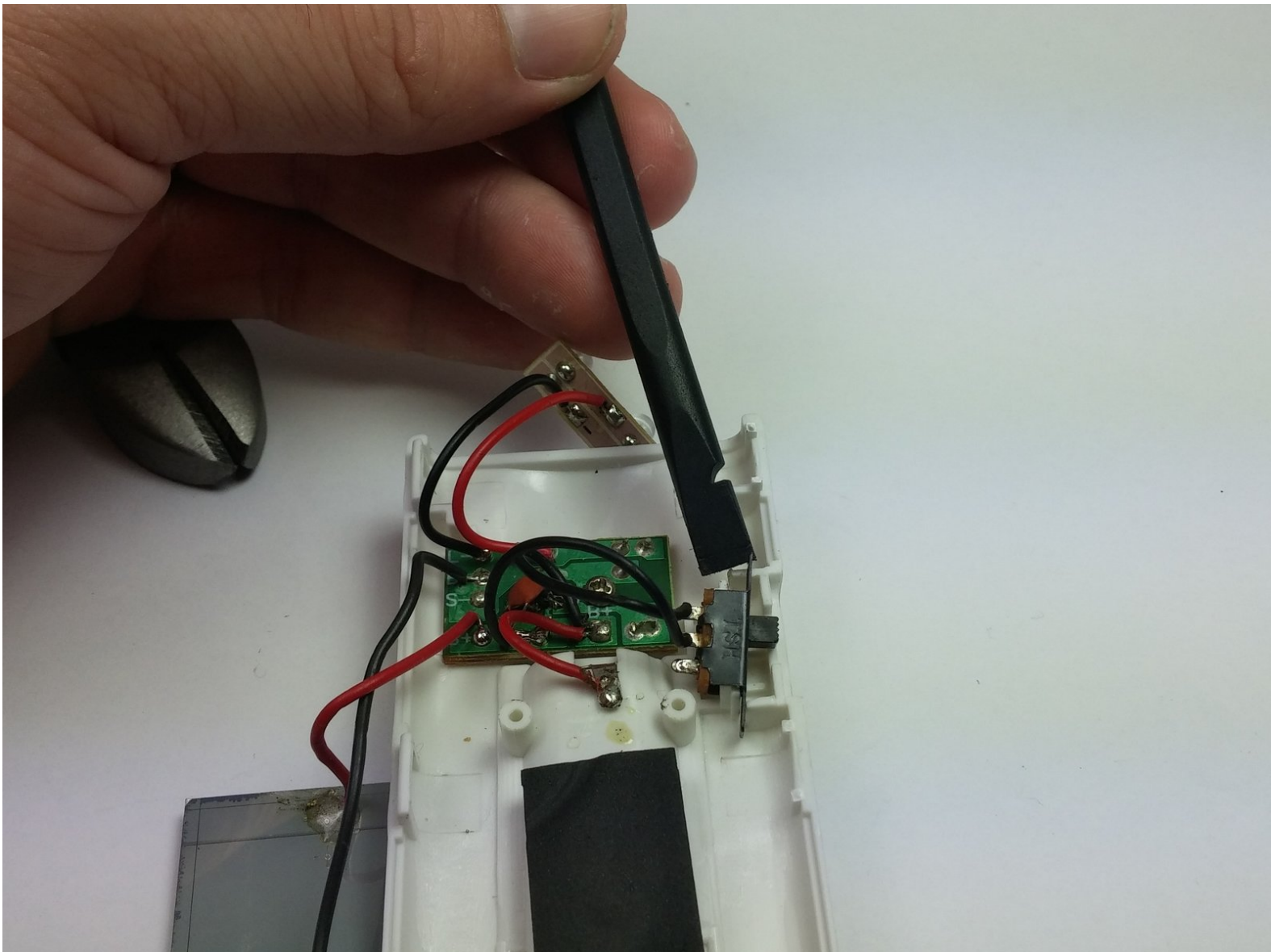




Nokero N400 Switch Replacement

This guide will walk you through replacing the switch in your Nokero N400

Written By: Benjamin franklin



INTRODUCTION

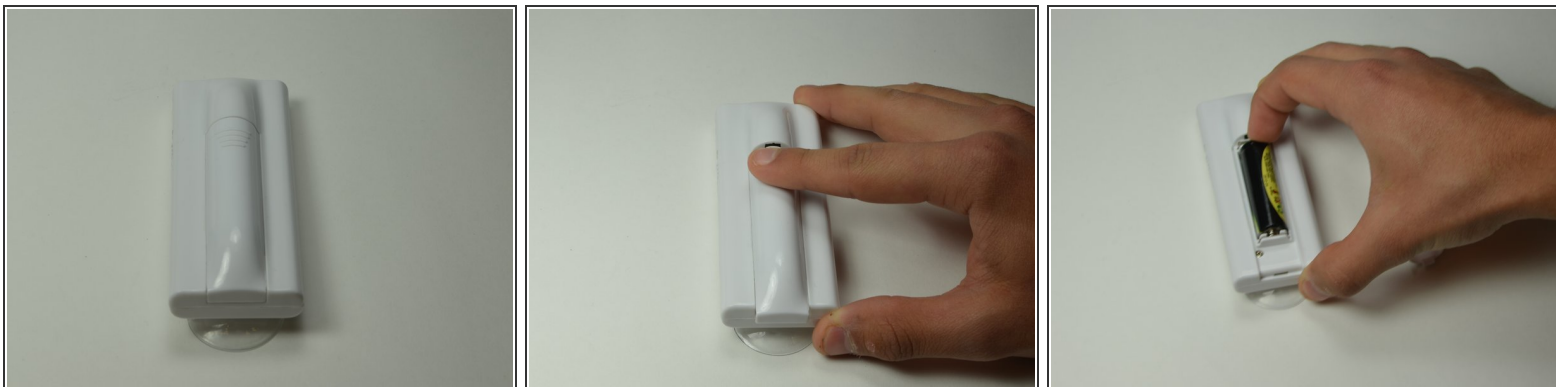
If pushing the power switch up to the on direction, you may need to use this guide to replace the power switch.



TOOLS:

- [Phillips #1 Screwdriver](#) (1)
 - [iFixit Opening Tools](#) (1)
 - [Spudger](#) (1)
 - [Flush Wire Cutters](#) (1)
-

Step 1 — Remove Battery Cover



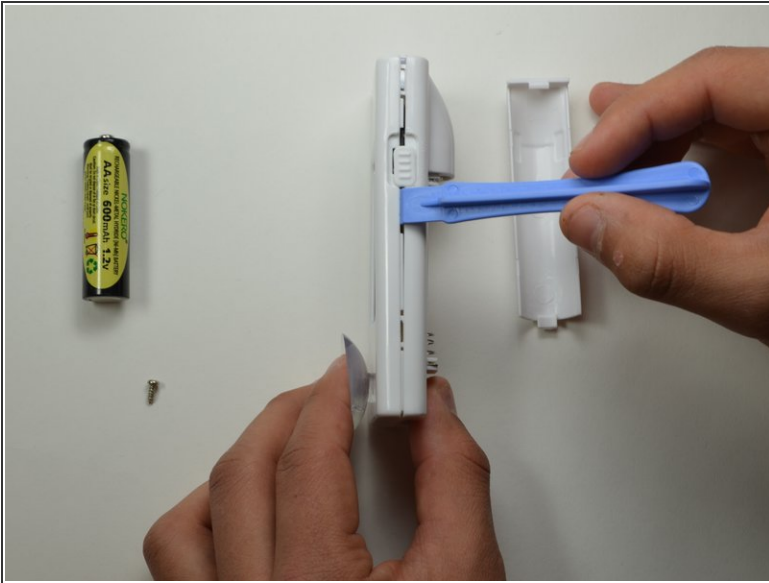
- Press down firmly to remove the battery cover and display battery.
- Then remove the battery.

Step 2 — Unscrew Back Cover



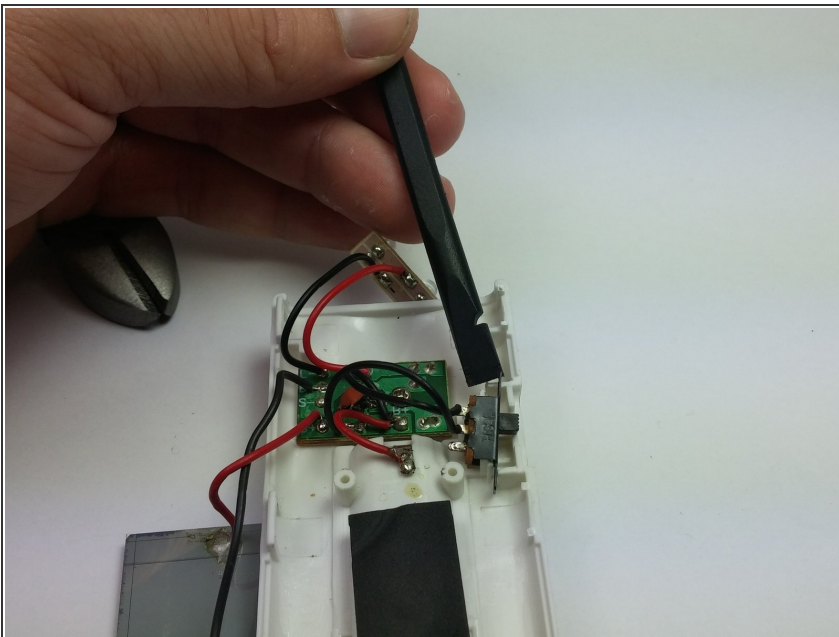
- Remove the 7mm Phillips #1 screw.

Step 3 — Pry Open Back Cover



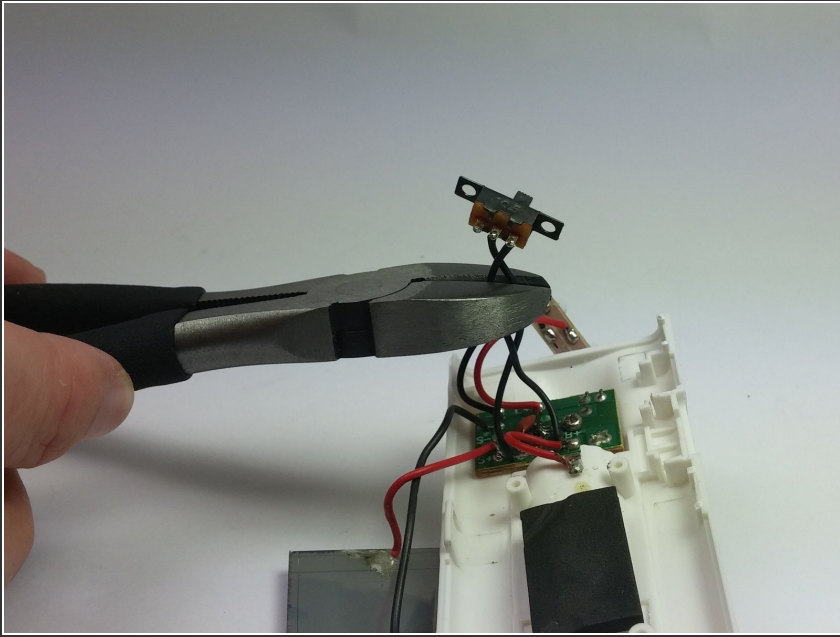
- Place the plastic opening tool in between the two plastic panels and slowly work your way around the device.
- Unlatch the clips on the inside and pull device apart.
- ⓘ Some clips will break when forced open.

Step 4 — Remove Switch From Housing



- Using a spudger carefully pry switch from housing.

Step 5 — Cut Old Switch Free



- Use wire cutters to cut the two black wires attached to the old switch.
- ★ You must use a splicer or a soldering gun to reattach the wires of the new switch.
- ⓘ If you splice the new switch wires together in the opposite order of the old switch wires, the new switch will still work.

To reassemble your device, follow these instructions in reverse order.