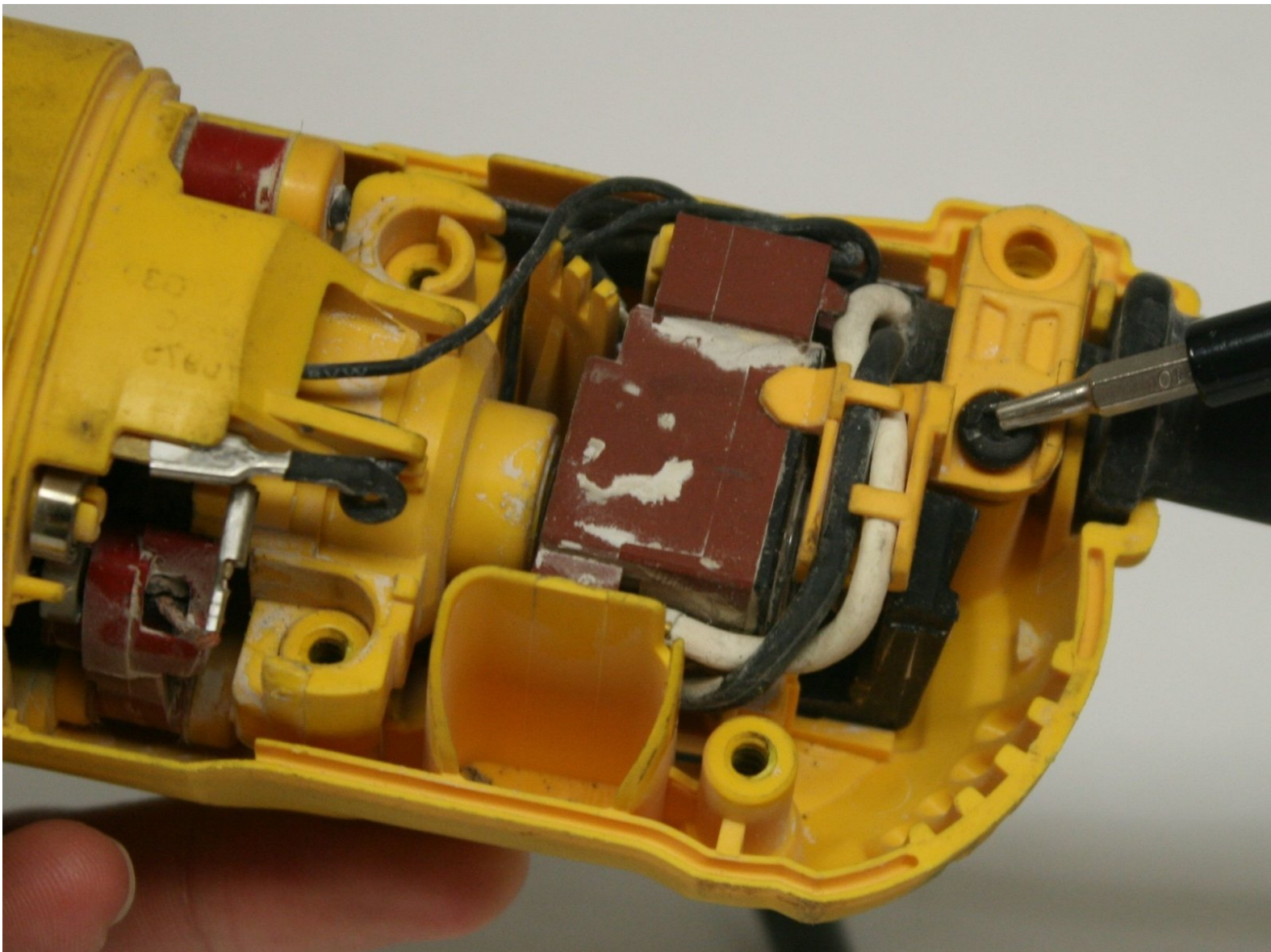




DeWalt D28110 Power Switch Replacement

If the power switch isn't locking or turning your grinder on, replacing it may be your best option.

Written By: Kean Wee



INTRODUCTION

The power switch is the combination of two pieces working together, the mechanical switch and the electronic switch. If the switch is problematic, you may want to replace one or both of these components.

TOOLS:

- [Spudger](#) (1)
 - [JIS #1](#) (1)
 - [T15 Torx Screwdriver](#) (1)
-

Step 1 — Disassembling DeWalt D28110 Gear Case



- Using the T-15 screwdriver, remove the four 22-mm torx screws on the gear case.

⚠ Unplug the grinder before any disassembly.

Step 2



- Pull out the gear case.

Step 3 — Disassembling DeWalt D28110 Back Panel Disassembly



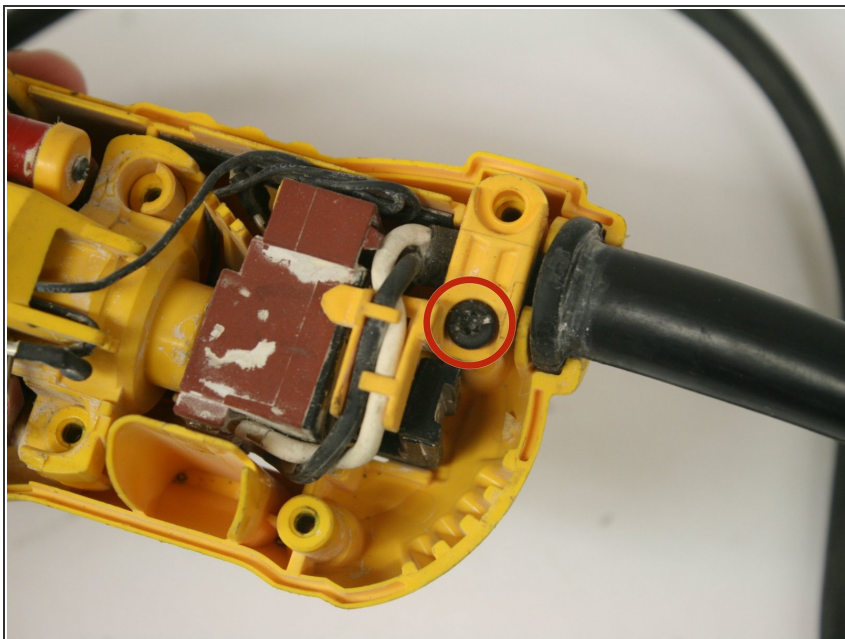
- Using the T-15 screwdriver, remove the four 22-mm torx screws holding the back panel in place.
- ⚠ Unplug the grinder before any disassembly.

Step 4



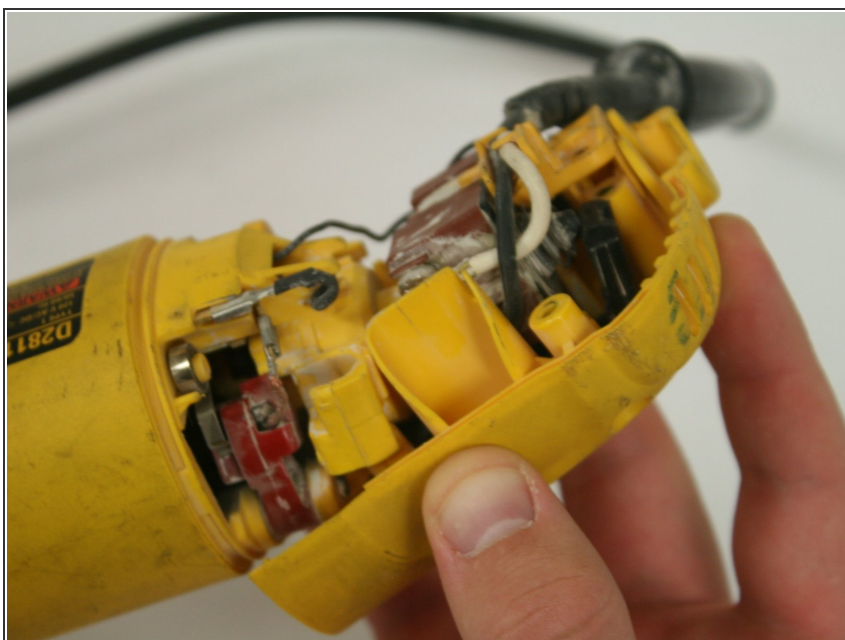
- Use the edge of the spudger to loosen and remove the back panel.

Step 5



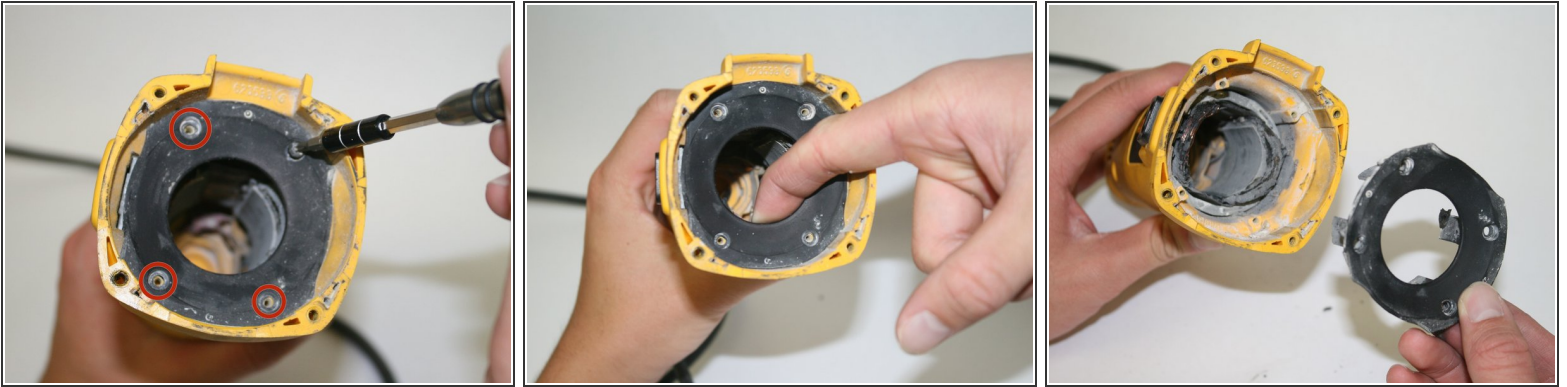
- Remove the single 20-mm torx screw holding the rear panel in place.

Step 6



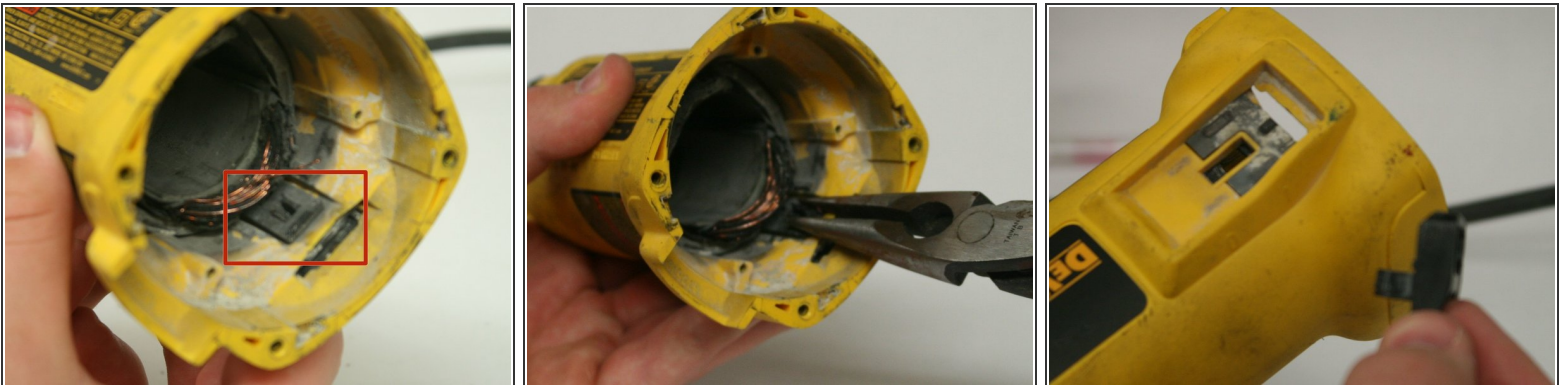
- Pull back the rear side of the back panel.

Step 7 — Power Switch



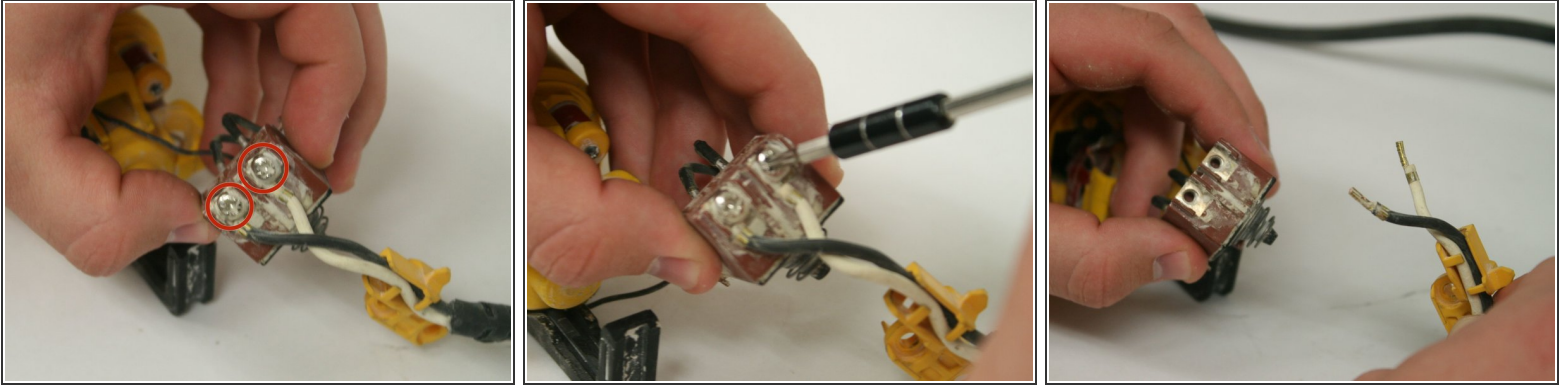
- There is an inner plastic guard behind the motor shaft.
- Unscrew the four screws at each corner.
- The guard should pull out with a good firm tug.

Step 8



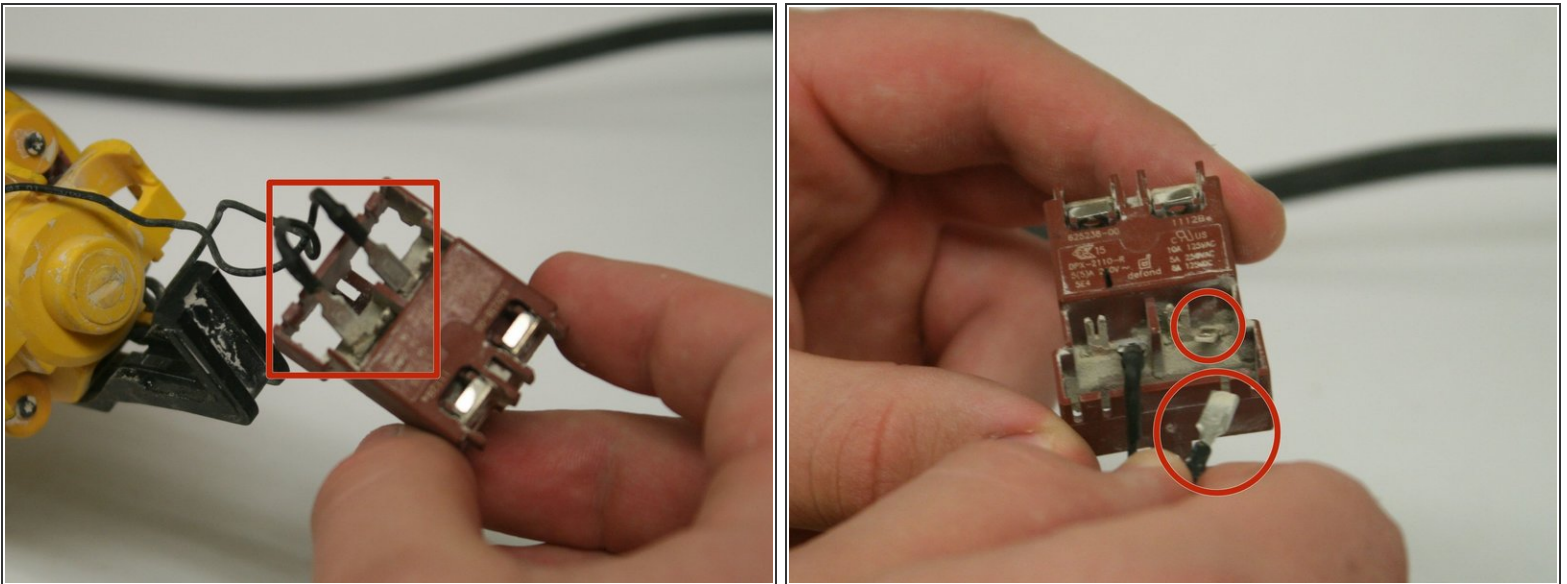
- Just behind the inner guard is the button slide.
- Use needle nose pliers to pinch and push the button's flanges together, and out of the slot.

Step 9



- Using the J-1 screwdriver, unscrew the power cord wires from the red switch box (located in the back of the grinder).

Step 10



- Disconnect the motor wires from the other side of the switch box.
- The wires are connected as a sleeve to the flat pin out of the switch box. A firm pull should do it.

To reassemble your device, follow these instructions in reverse order.