



Canon PowerShot A590 IS LCD Screen Replacement

If your Canon PowerShot A590 IS screen displays...

Written By: Zach



INTRODUCTION

If your Canon PowerShot A590 IS screen displays discolored, distorted, or poor-quality photos, use this guide to perform an LCD screen replacement.

An LCD or liquid crystal display is the display technology used to create the screens embedded in the back of the digital camera. The LCD is responsible for displaying photos, menu options, and serves as a viewfinder. Some specific indicators that your LCD screen is damaged include a black screen, pixelated screen, multicolored dots or lines of discoloration, a screen with rainbow colors, etc.

When following this guide, be sure to be **gentle** when opening the battery hatch and removing the LCD screen to expose the motherboard.

TOOLS:

- [Phillips #00 Screwdriver](#) (1)
 - [Soldering Workstation](#) (1)
 - [iFixit Opening Tool](#) (1)
-

Step 1 — Batteries

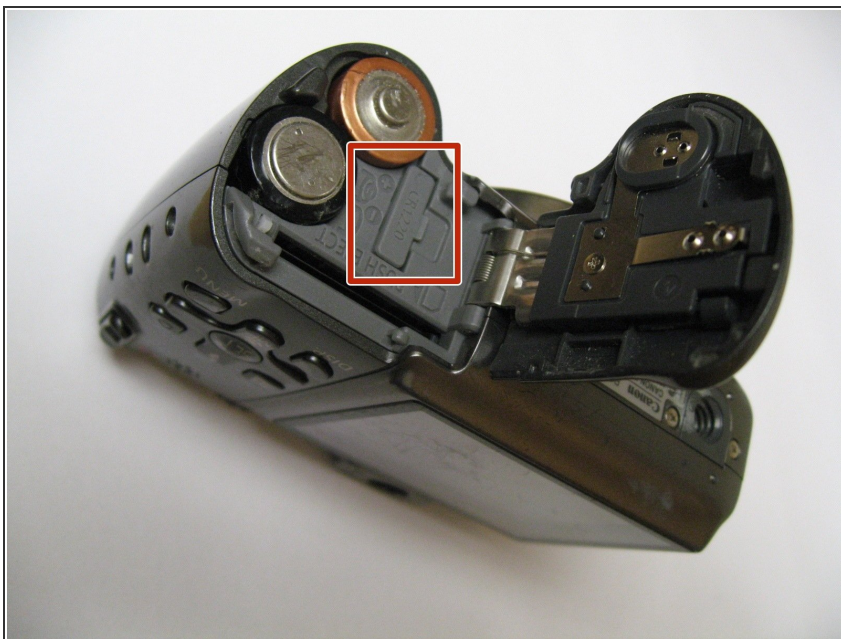


i The battery hatch is on the bottom of the camera.

! **CAUTION:** Locate the switch to open the hatch and push gently toward the front of the camera. Too much force can break the hatch.

- While the switch is pushed forward, pull the cover away from the camera.

Step 2



i This camera requires AA batteries.

- To remove batteries, simply allow them to fall out of the camera.
- Use a fingernail to lift the clock battery out of the camera.

Step 3



- ★ When replacing the AA batteries, verify they are oriented correctly by following the (+) and (-) signs on the camera.

Step 4 — Back Cover



- Remove the screw located under the rubber flap on the left side of the camera using a Phillips #00 screwdriver.

Step 5



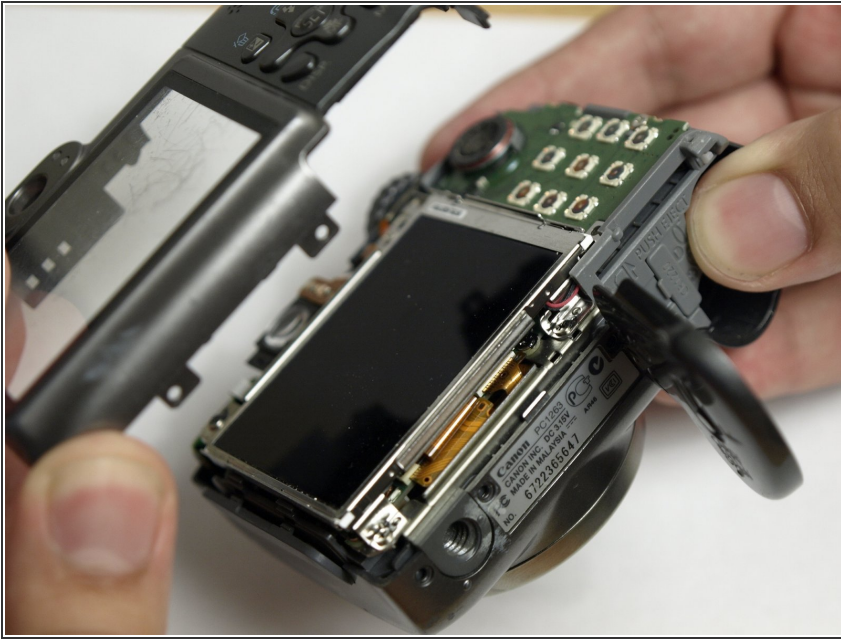
- Remove the two screws located on the other side of the camera using a Phillips #00 screwdriver.

Step 6



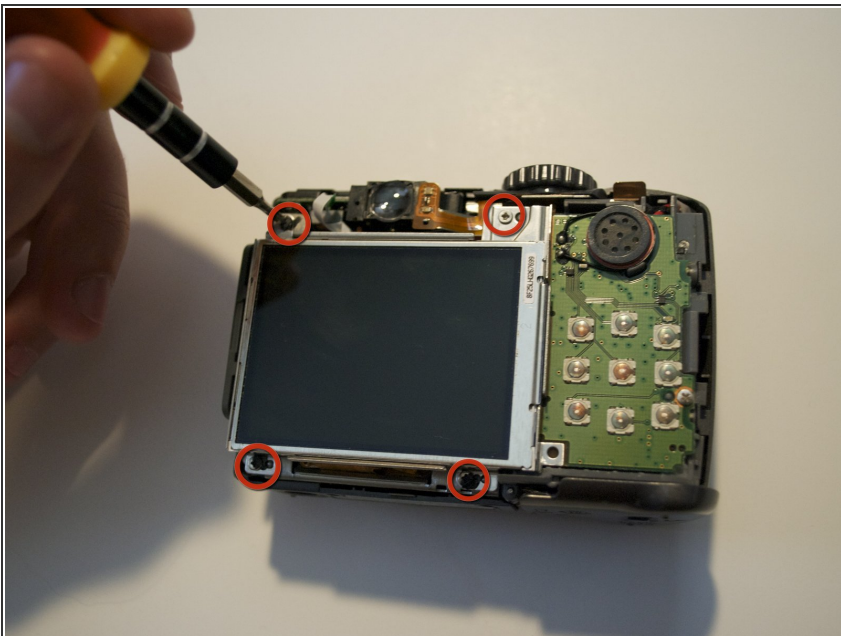
- Remove the three screws located at the bottom of the camera using a Phillips #00 screwdriver.

Step 7



- Open the battery cover.
- Using the iFixit opening tool, push up gently around all edges of the camera.

Step 8 — LCD Screen



- Remove the four screws near the corners of the LCD using a Phillips #00 screwdriver.

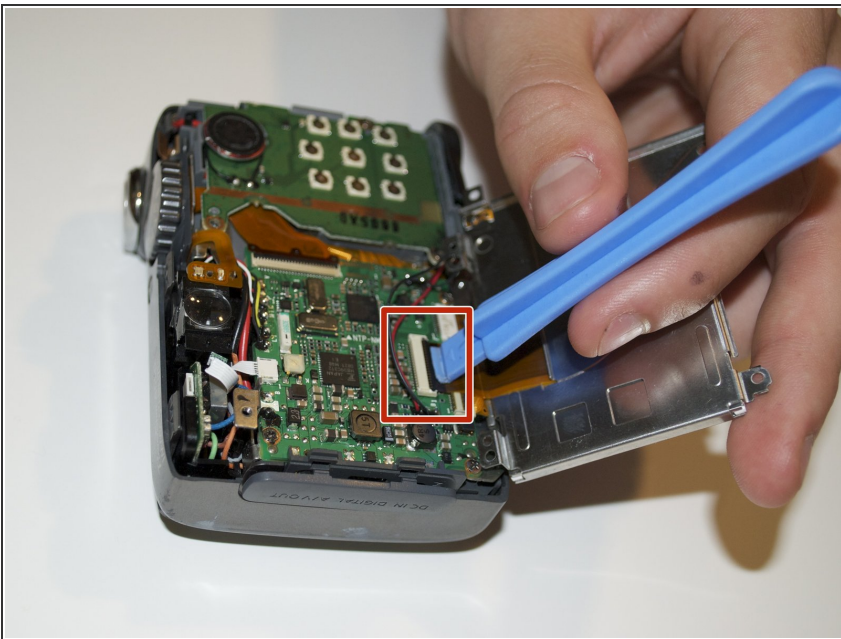
Step 9



⚠ CAUTION: The LCD is connected to the motherboard with different wires and a ribbon. Using too much force may disconnect these parts.

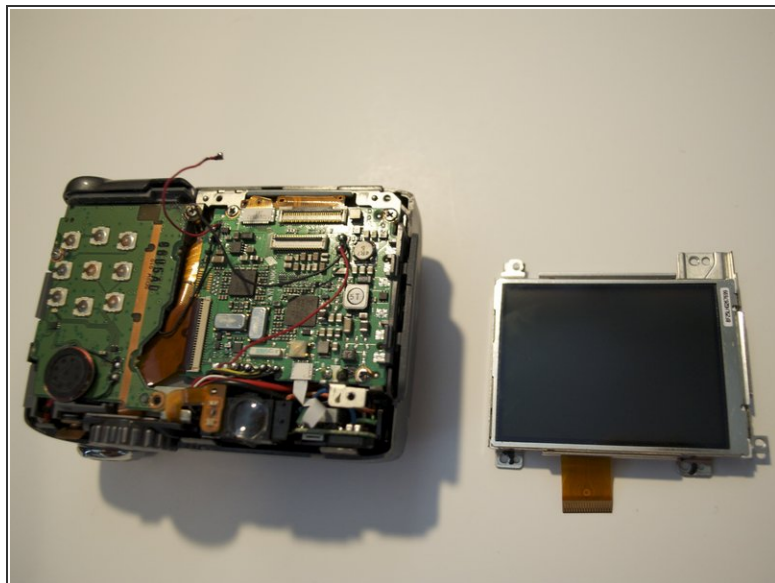
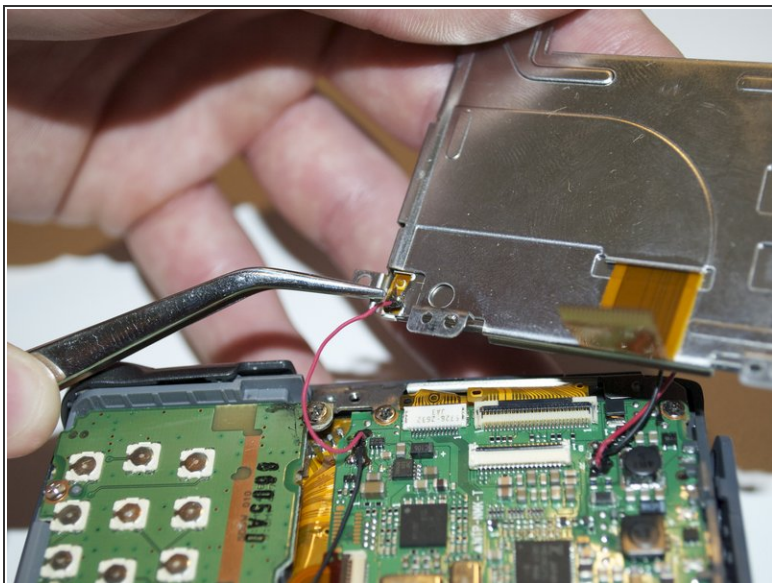
- Gently lift the screen from the motherboard.
- Keep the LCD pulled back in one hand.

Step 10



- Keep the LCD pulled back in one hand.
- Use an iFixit opening tool to pull the black retaining clip up and disconnect the ribbon.

Step 11



- Desolder the wires from the back of the LCD located in the bottom left corner.
- Remove the solder from the wires.
- Separate the LCD from the rest of the camera.

To reassemble your device, follow these instructions in reverse order.