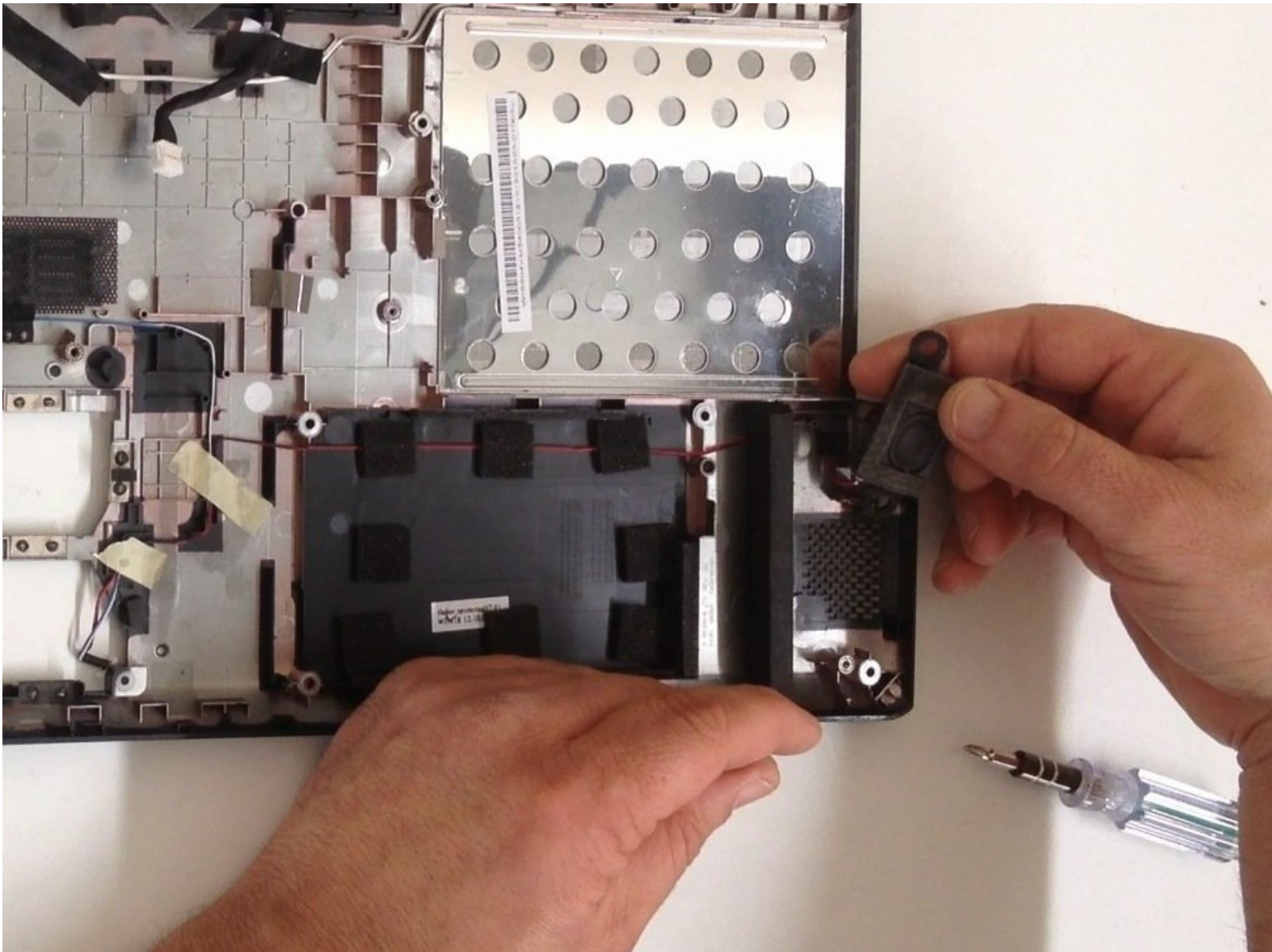




Acer Aspire V5-571 Loudspeakers Replacement

Acer Aspire V5-571 Loudspeakers Replacement

Written By: ZFix



INTRODUCTION

How to disassemble the laptop and replace the Loudspeakers.

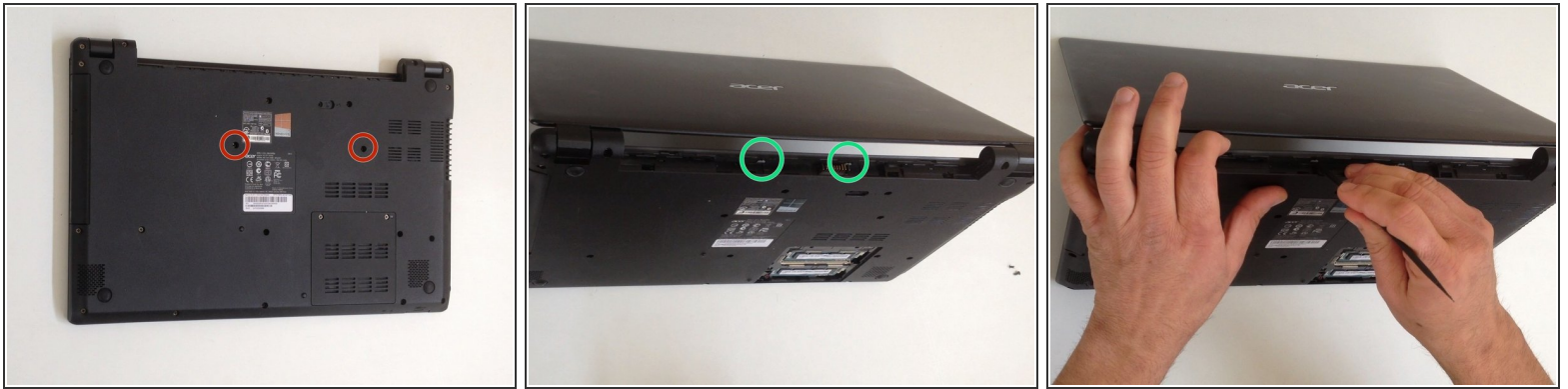
[video: <http://youtu.be/mrKPisD7H0U>]



TOOLS:

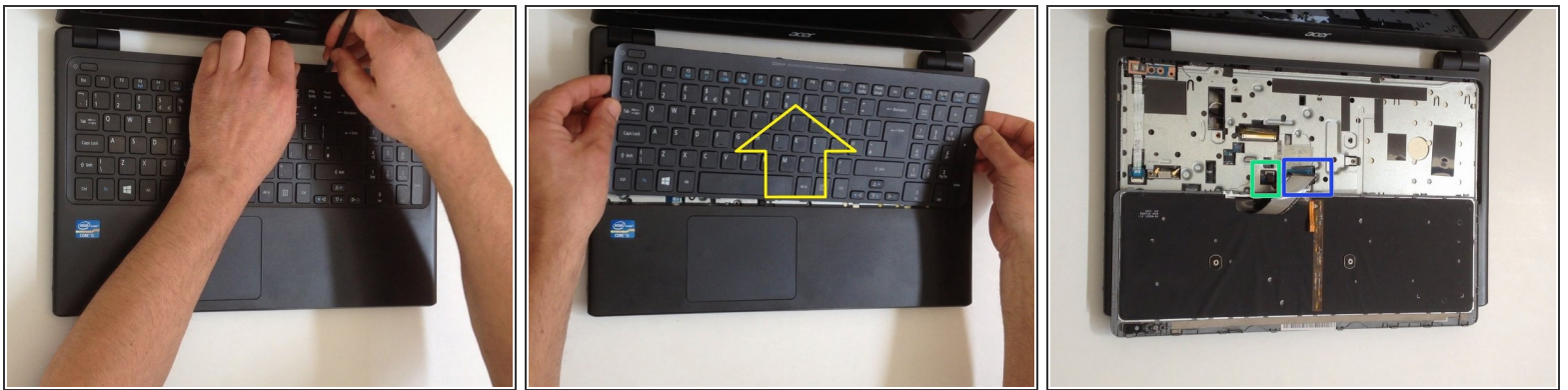
- [Phillips #0 Screwdriver](#) (1)
 - [iFixit Opening Tools](#) (1)
 - [iFixit Opening Picks set of 6](#) (1)
 - [Spudger](#) (1)
-

Step 1 — Keyboard



- Turn off the laptop and remove the battery.
- Remove two screws securing the Keyboard.
- The Keyboard is held by two locking clips, under the battery. Use the sharp tip of a plastic tool to release the keyboard.

Step 2



- Remove the Keyboard and disconnect the two flex cables:
 - Keyboard flex cable
 - Keyboard Light flex cable



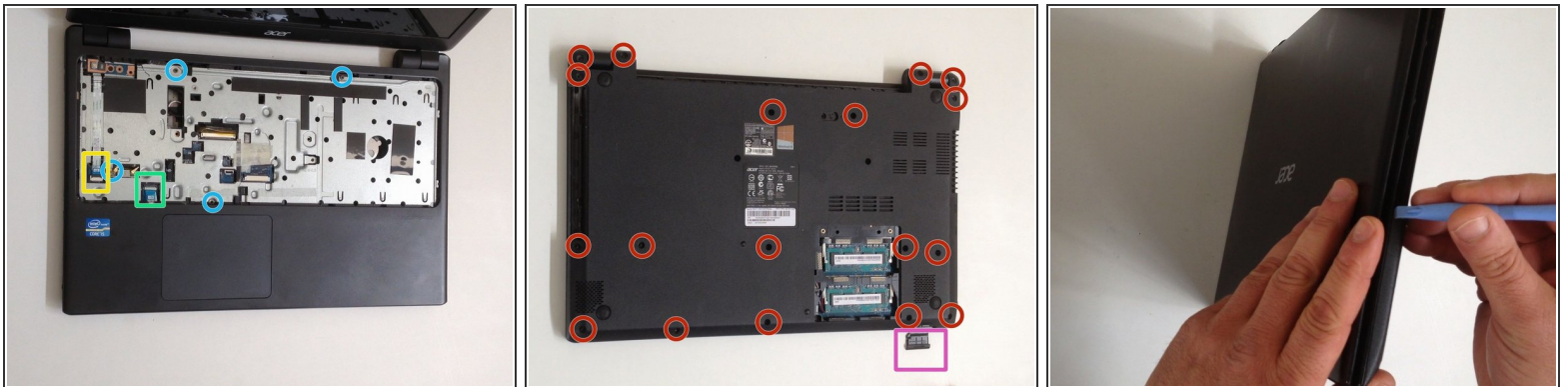
[Please SUBSCRIBE to my channel ツ](#)

Step 3 — Optical Drive



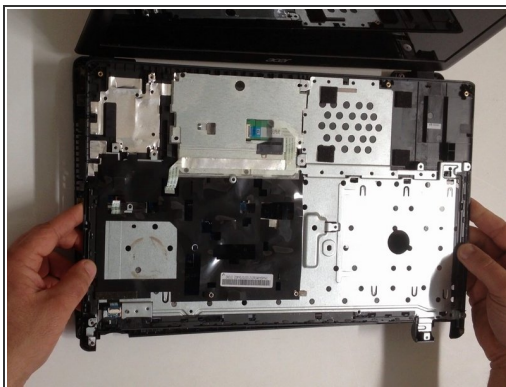
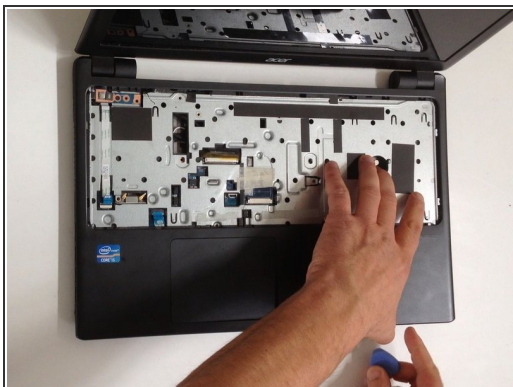
- Remove the screw securing the Optical drive and gently press the drive to show slightly as at the second pic.
- Slide the drive to the left and remove it.

Step 4 — Upper Cover



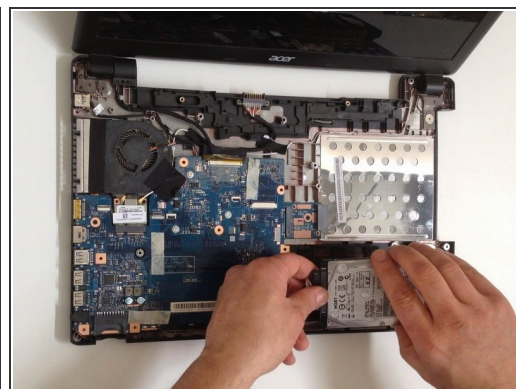
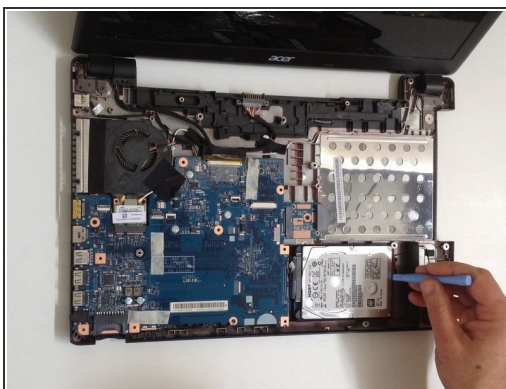
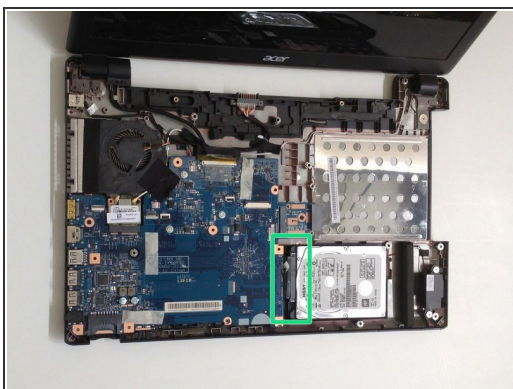
- Remove 4x phillips screws and disconnect:
 - Power On button flex cable
 - Touch pad flex cable
- Remove 18x Phillips screws from the bottom cover.
- Remove any memory SD Card from the Card reader.
- Start opening with a plastic opening tool.

Step 5



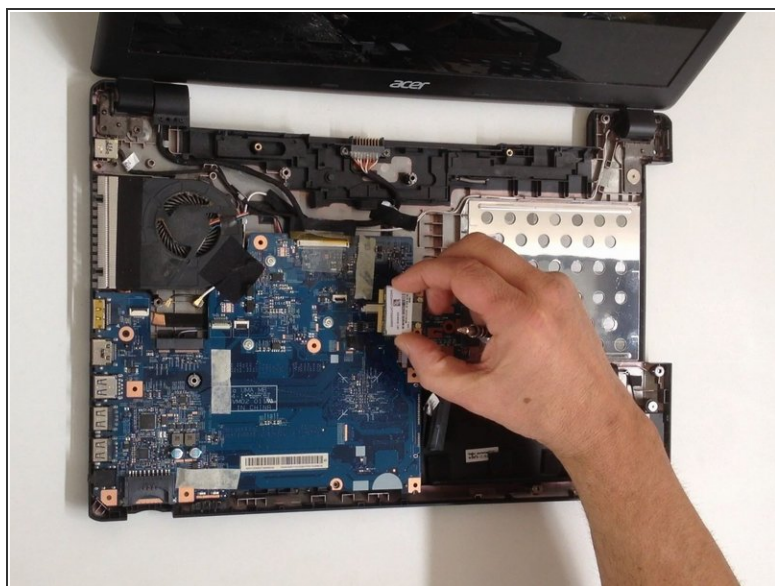
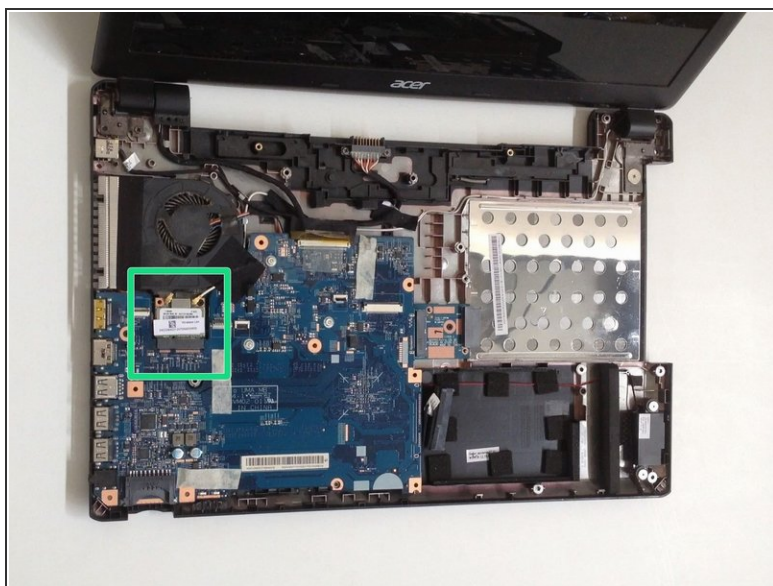
- Carefully separate the upper cover and remove it.

Step 6 — HDD (Hard Disk Drive)



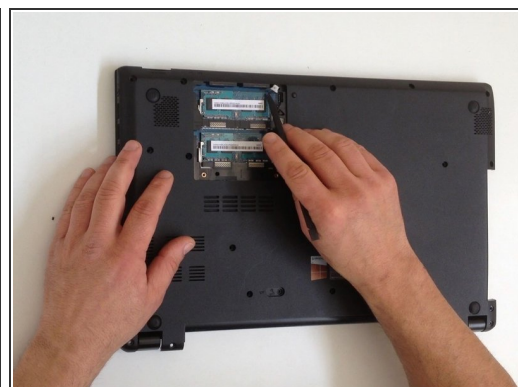
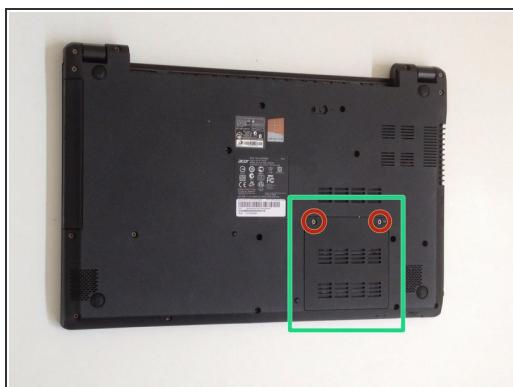
- Gently remove the HDD and disconnect the SATA cable from it.
- [Please SUBSCRIBE to my channel ツ](#)

Step 7 — Wi-Fi Half Mini PCIe card



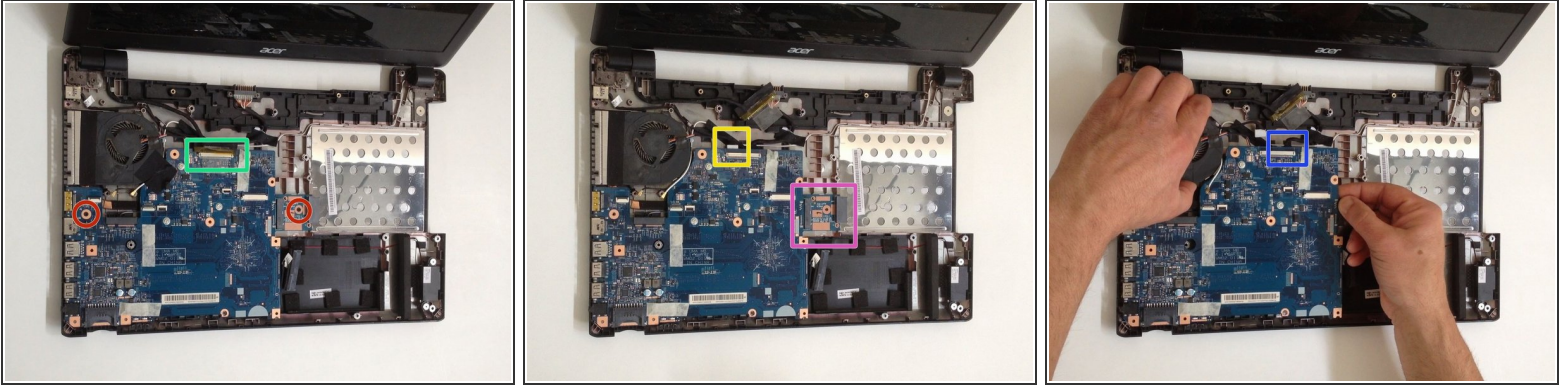
- Remove one Phillips screw, securing the WLAN card and disconnect the two coaxial antenna cables.
- Remove the Wi-Fi card.

Step 8 — Mother Board



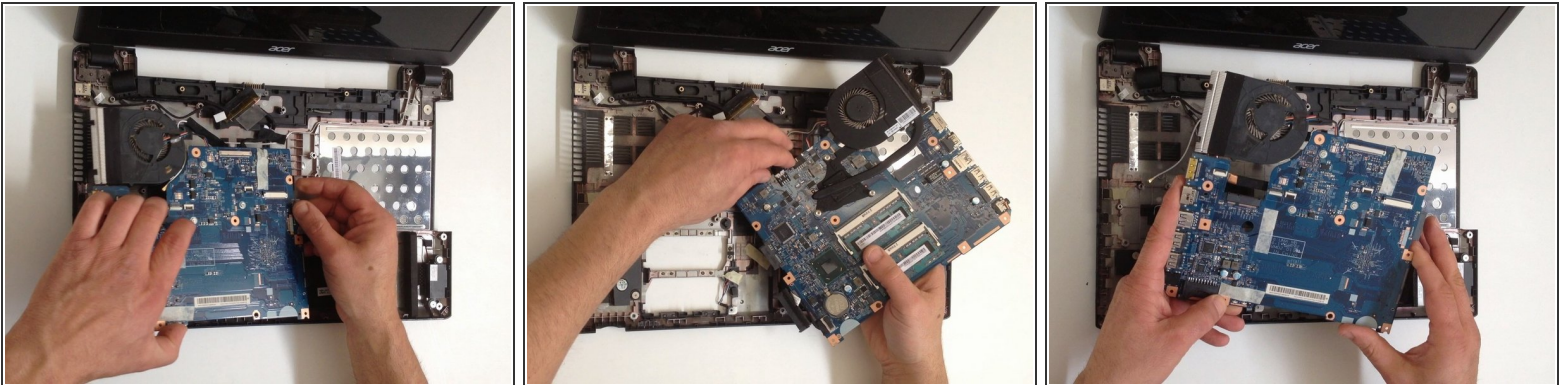
- Remove the Memory Cover.
- Disconnect the Loudspeaker cable connector.

Step 9



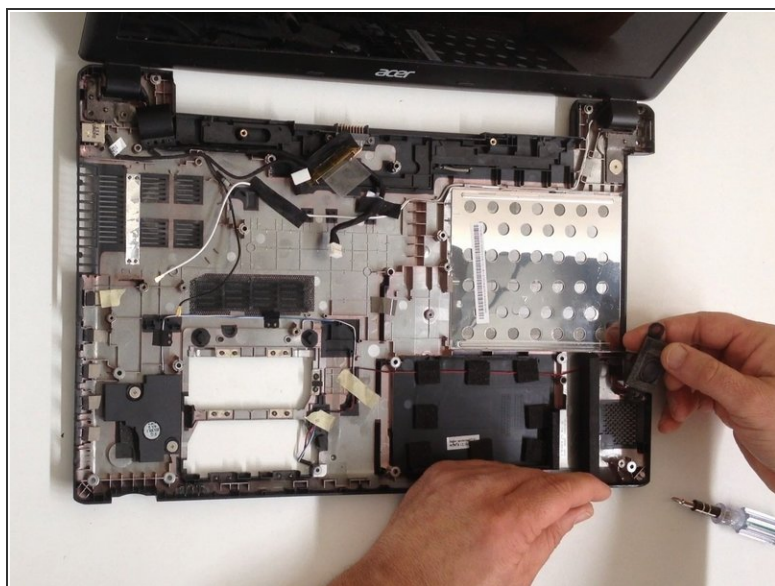
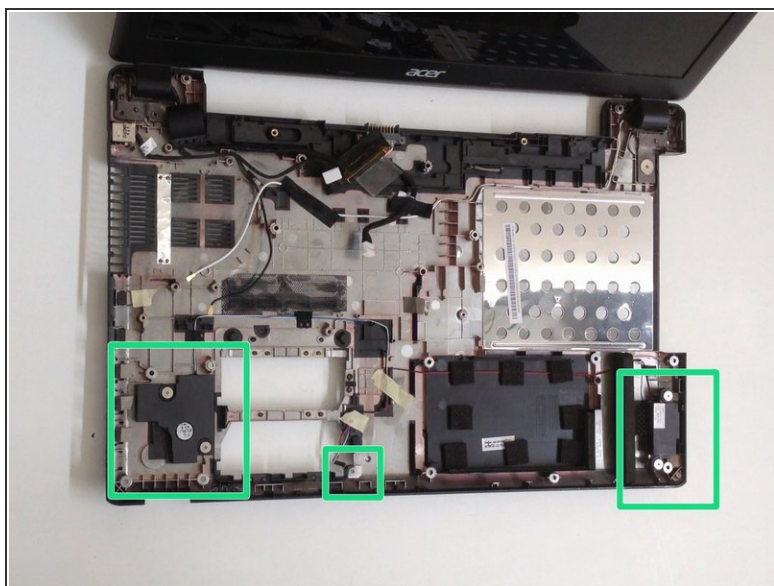
- Remove two Phillips screw from the Mother board and from the Optical drive SATA adapter.
- Disconnect the LCD Display flex cable.
- Disconnect the DC Jack cable.
- Carefully remove the Optical drive SATA adapter.
- We will disconnect the battery cable when we pick up the board.

Step 10



- Carefully pick up the Mother board and disconnect the Battery cable.

Step 11 — Loudspeakers



- There are two Loudspeakers. Each of them is held by two Phillips screws.

- .
- .
- .
- .

- **Did you do it successfully?**

To reassemble your device, follow these instructions in reverse order.