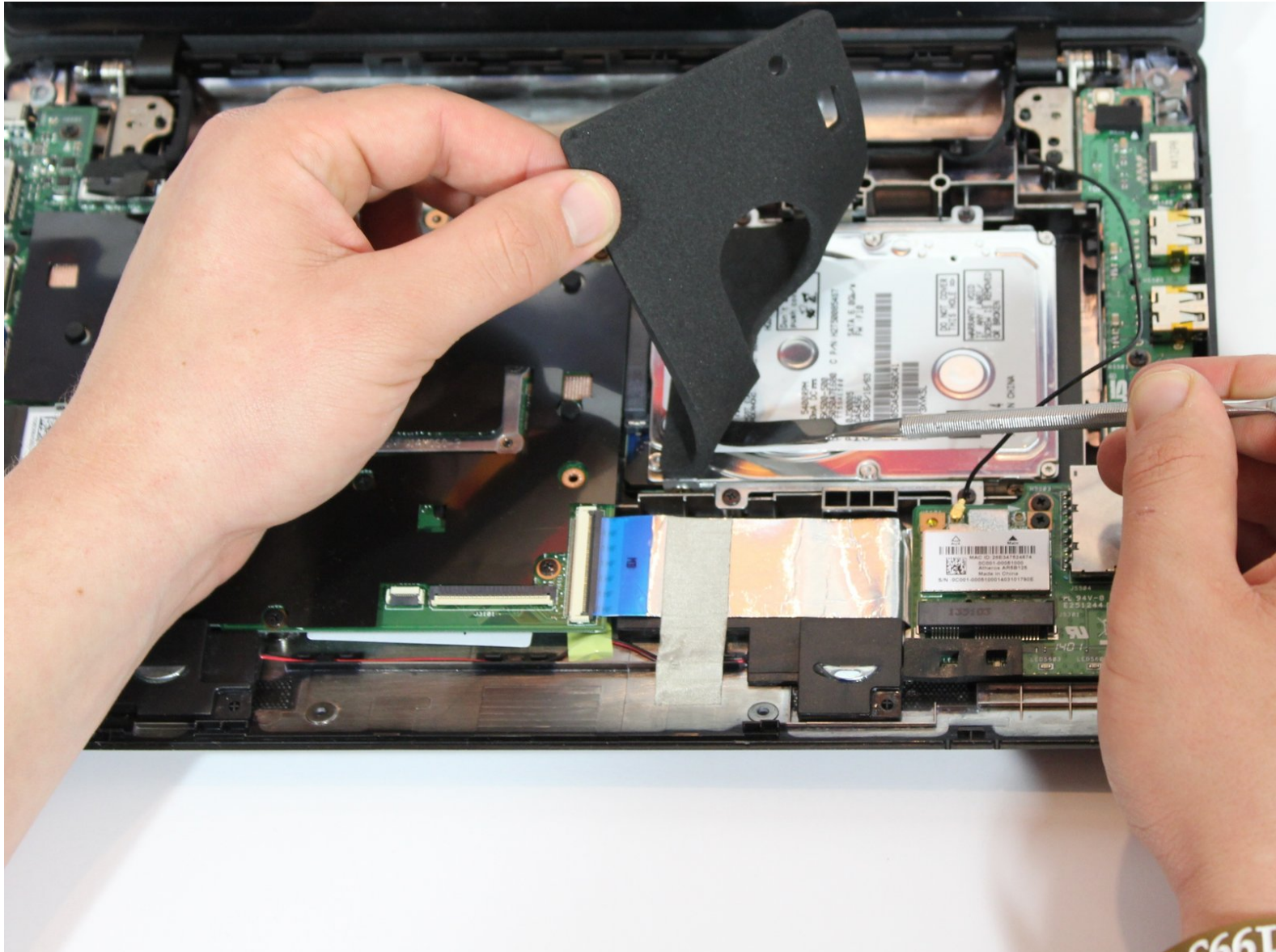




Asus X200MA Hard Drive Replacement

Written By: Vanessa Garcia





TOOLS:

- [Spudger](#) (1)
- [Phillips #0 Screwdriver](#) (1)



PARTS:

- [Crucial MX500 1 TB SSD](#) (1)
- [Crucial MX500 250 GB SSD](#) (1)
- [Crucial MX500 500 GB SSD](#) (1)
- [Crucial MX500 2 TB SSD](#) (1)

Step 1 — Back Panel



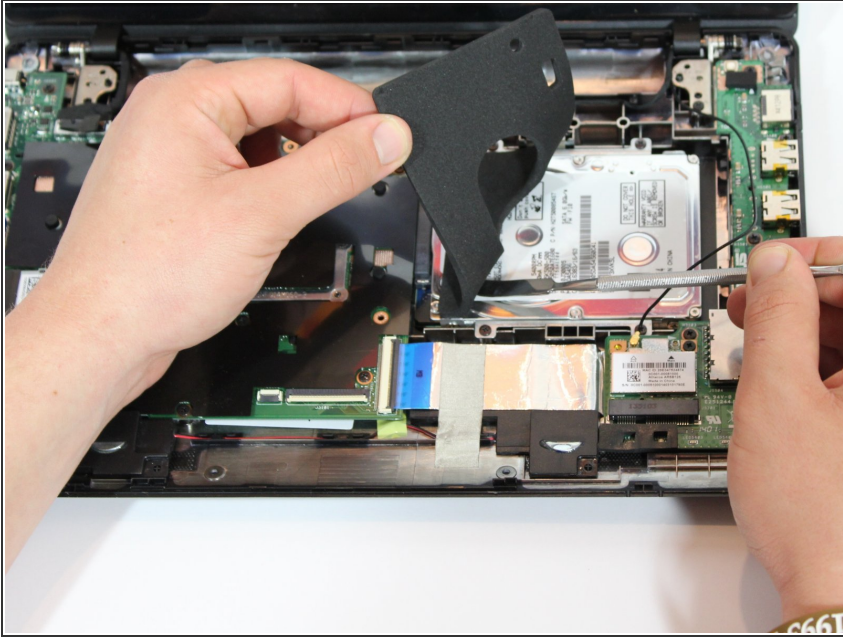
- Remove the following six screws:
 - Six 4 mm screws using a Phillips #0 screwdriver.
 - Remove the following one screw:
 - One 14 mm screw using a Phillips #0 screwdriver.
- ★ The 14mm screw goes in the center.

Step 2



- Use a plastic or metal spudger to separate the keyboard from the back panel and lift the keyboard out of place.

Step 3 — Hard Drive



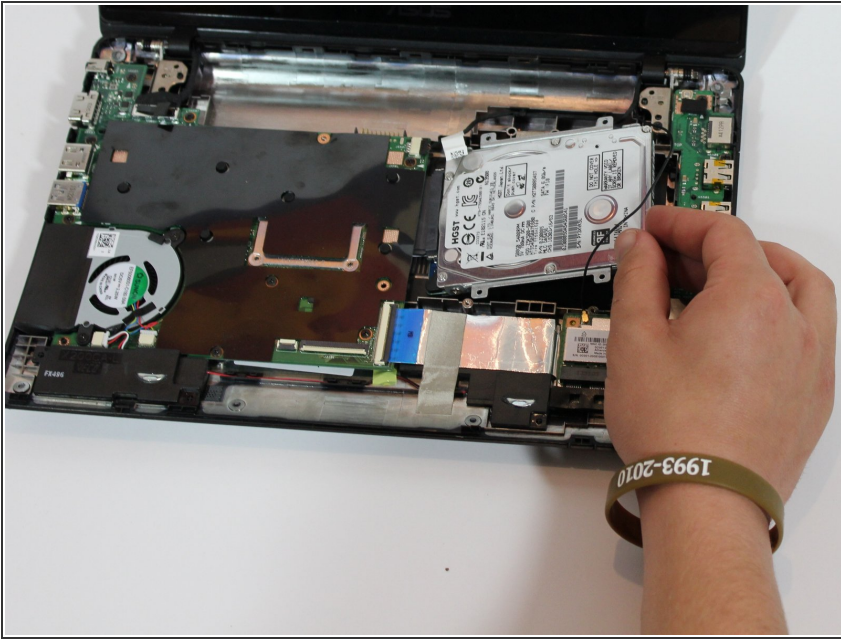
- Remove the black foam and adhesive located on top of the hard drive.

Step 4



- Remove the following four screws:
 - Four 4 mm Phillips #0 using a phillips screwdriver.

Step 5



- Slide out the hard drive

To reassemble your device, follow these instructions in reverse order.