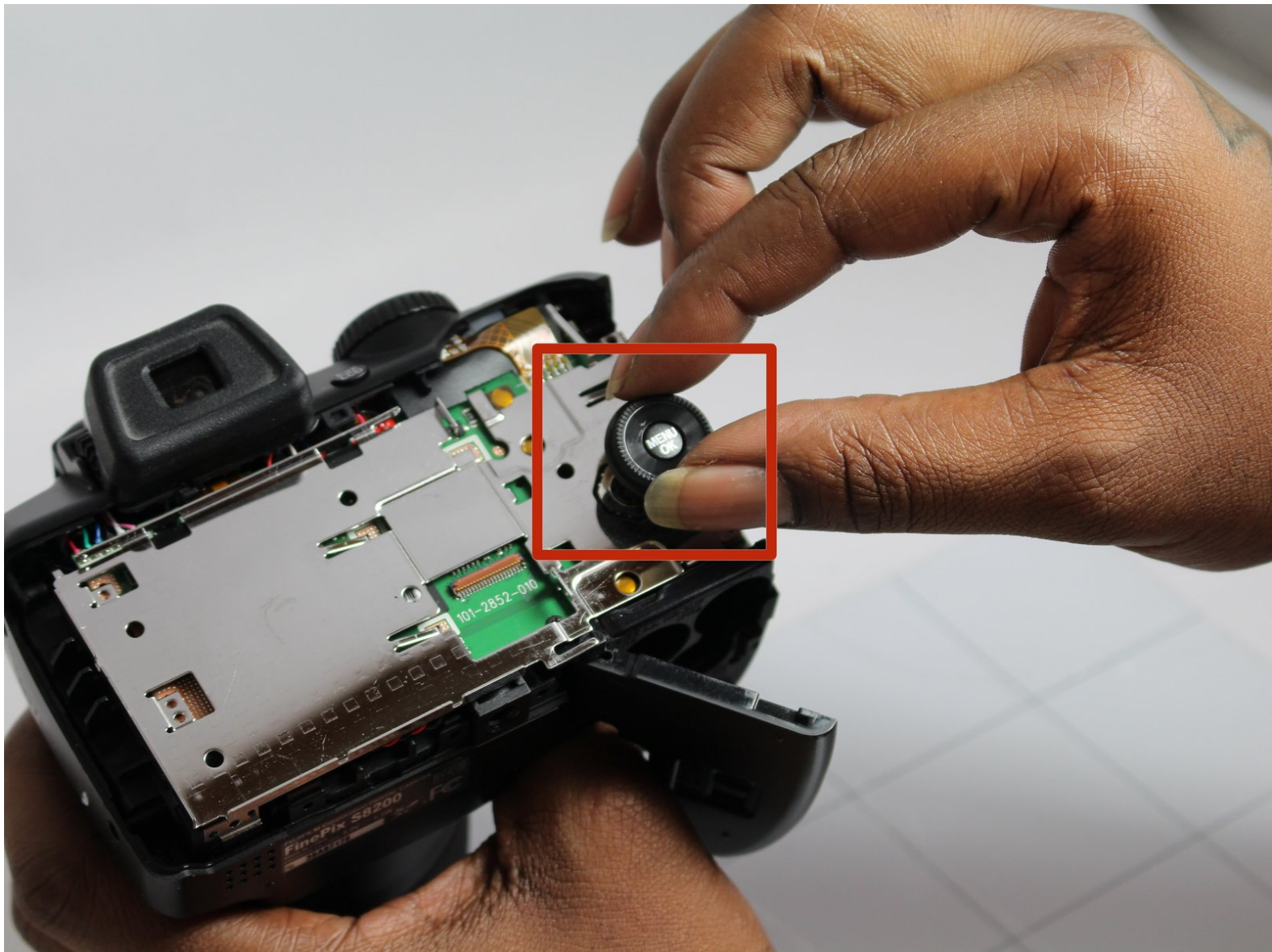




Fujifilm FinePix S8200 Selector Replacement

To remove the Selector, carefully pull it until the button has been fully detached.

Written By: Ugent Dailey



INTRODUCTION

The Selector is an important part of the camera because it controls the LCD screen. To replace it, follow the below steps.



TOOLS:

- [iFixit Opening Tools](#) (1)
 - [JIS #00 Screwdriver](#) (1)
-

Step 1 — Batteries



- Turn the camera upside down so you can access the battery chamber.
- ⚠ Make sure that the camera is powered off before opening the battery chamber. Not doing so could damage your memory card.

Step 2



- Push the battery chamber latch in the direction of the front of the camera. Keeping tension on the latch, slide the battery chamber cover toward the outside of the camera, opening the battery chamber.

Step 3



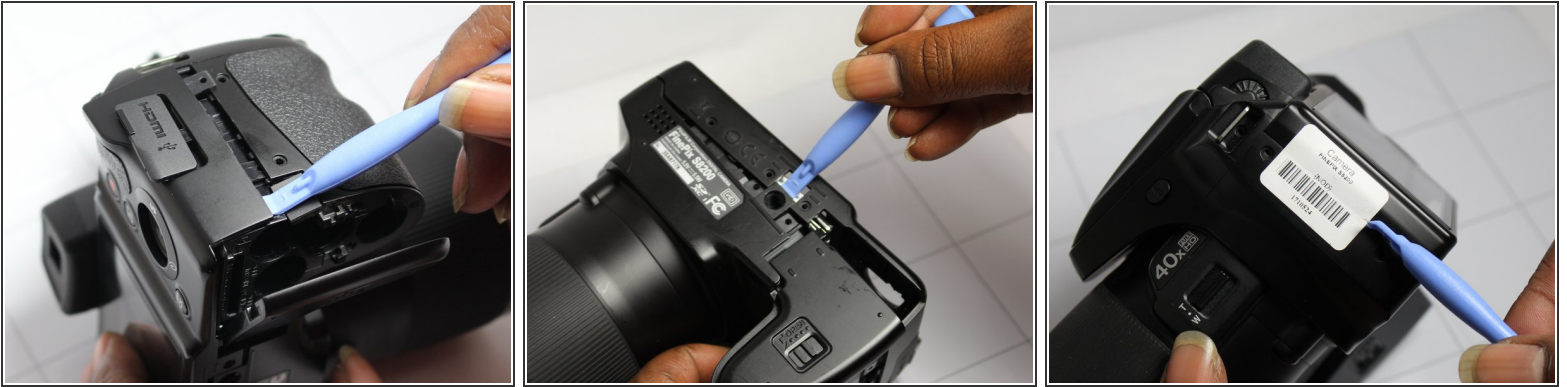
- With the battery chamber open, remove the old batteries.
- ★ When replacing the batteries, remember that the battery orientation is shown by the + and - marks. Each mark indicates which side of the battery faces up in the chamber.

Step 4 — Rear Housing Cover



- Remove the 4mm JIS #00 screws from the sides and bottom of the camera.

Step 5



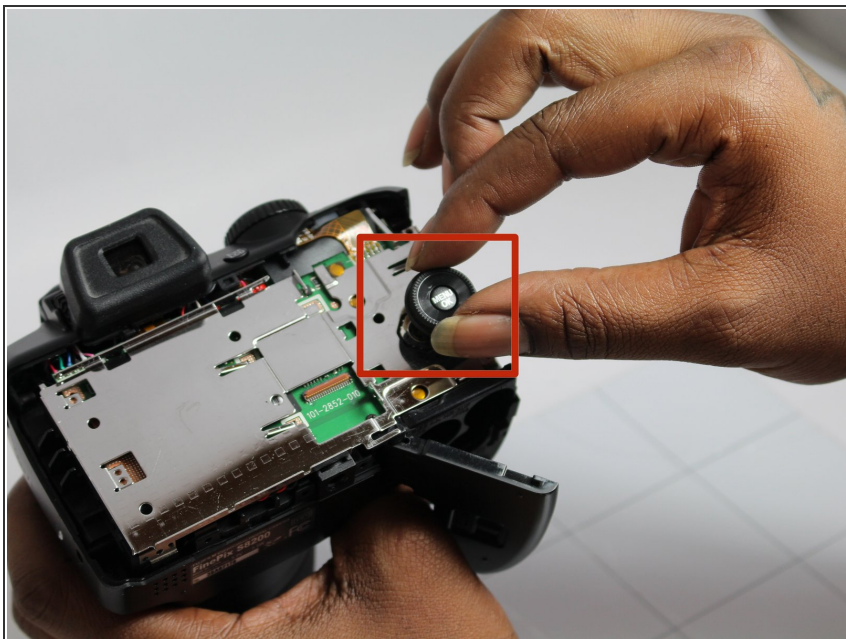
- Carefully pry away the rear housing cover with the plastic opening tool.

Step 6



- Remove the rear housing cover by carefully pulling it away from the camera.

Step 7 — Removing Selection Button



- To Replace the Selection button, carefully pull the button until the button has been fully detached.

To reassemble your device, follow these instructions in reverse order.