



Fujifilm FinePix S8200 Rear Housing Cover Replacement

This guide outlines how to replace the rear housing cover in case it's damaged.

Written By: Marcos



INTRODUCTION

The rear housing cover protects the back of the camera. If the rear housing cover is cracked or damaged, it should be replaced.

TOOLS:

- [iFixit Opening Tools](#) (1)
 - [JIS #00 Screwdriver](#) (1)
-

Step 1 — Batteries



- Turn the camera upside down so you can access the battery chamber.
- ⚠ Make sure that the camera is powered off before opening the battery chamber. Not doing so could damage your memory card.

Step 2



- Push the battery chamber latch in the direction of the front of the camera. Keeping tension on the latch, slide the battery chamber cover toward the outside of the camera, opening the battery chamber.

Step 3



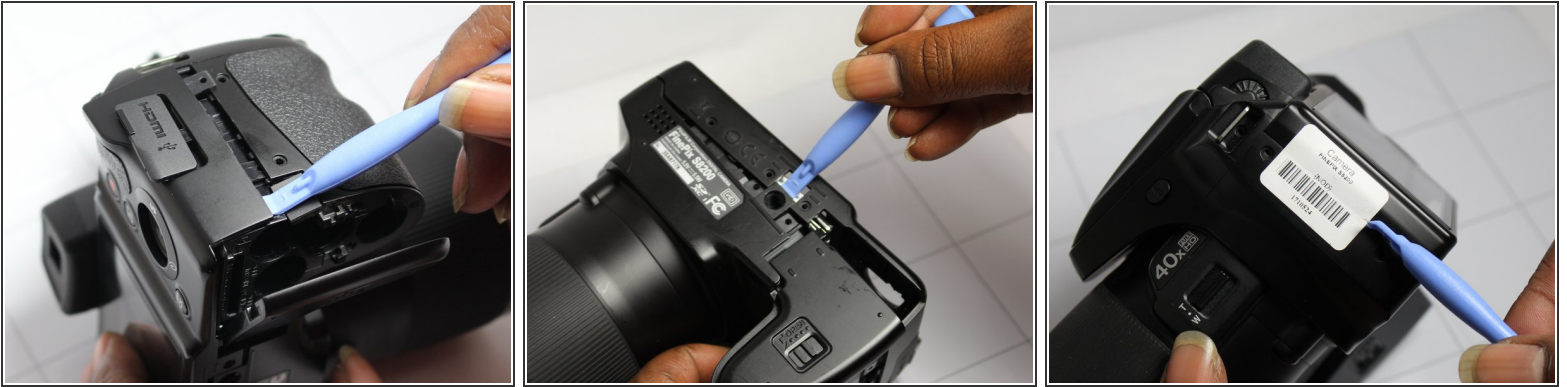
- With the battery chamber open, remove the old batteries.
- ★ When replacing the batteries, remember that the battery orientation is shown by the + and - marks. Each mark indicates which side of the battery faces up in the chamber.

Step 4 — Rear Housing Cover



- Remove the 4mm JIS #00 screws from the sides and bottom of the camera.

Step 5



- Carefully pry away the rear housing cover with the plastic opening tool.

Step 6



- Remove the rear housing cover by carefully pulling it away from the camera.

To reassemble your device, follow these instructions in reverse order.