



Samsung NX300 Rear Menu Button Replacement

The buttons on the back panel are the main...

Written By: Andres Perez



INTRODUCTION

The buttons on the back panel are the main controls for features such as adjusting the exposure value, saving selected picture options, selecting a focus point manually, or deleting files. If these buttons are not responsive, damaged, or missing, this guide will help you replace them.

Please note that all green strips shown in the photos are just green tape. They are not necessarily significant for the replacement of the buttons.

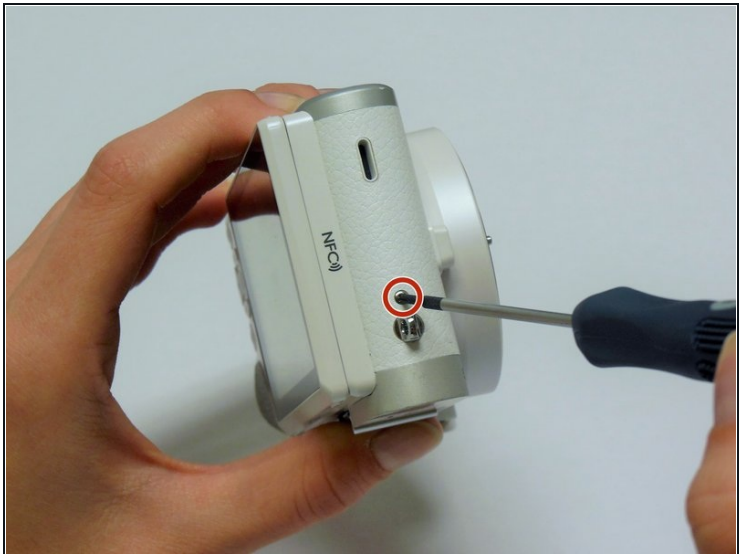
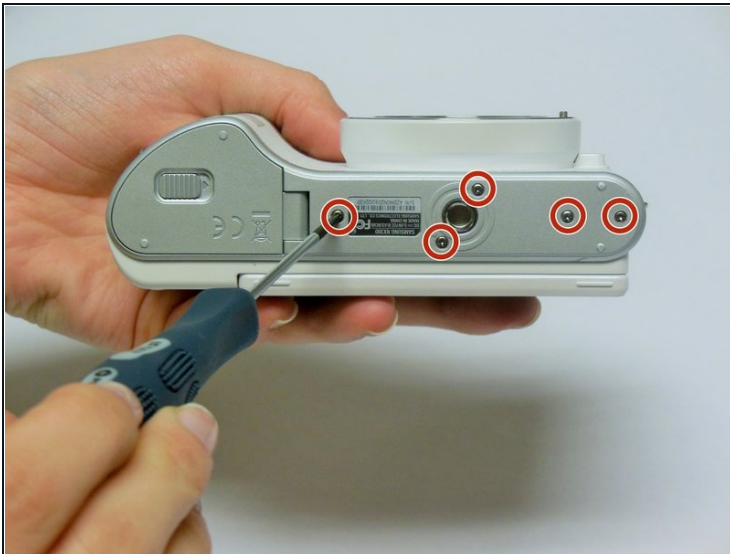
TOOLS:

Phillips #00 Screwdriver (1)

iFixit Opening Tool (1)

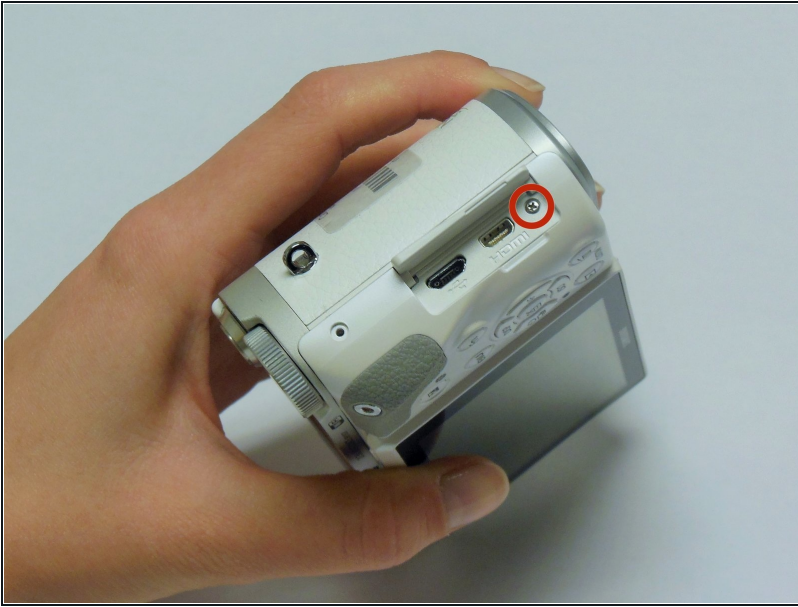
Tweezers (1)

Step 1 — Unscrew the Back Panel



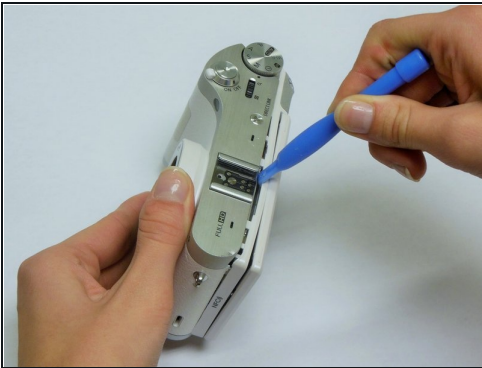
- Using a Phillips #00 precision screwdriver, remove the seven 4mm screws (5 on the bottom of the device and 1 on each of the two sides) holding the back panel to the camera.
- ⓘ On the NX300M model, there is an additional screw under the text AMOLED behind display which should be removed before detaching the back panel of the camera.

Step 2 — Remove the Input Port Screw



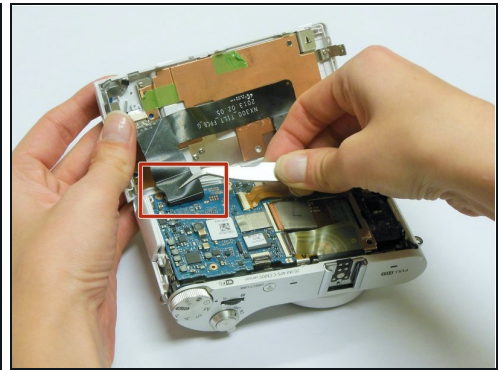
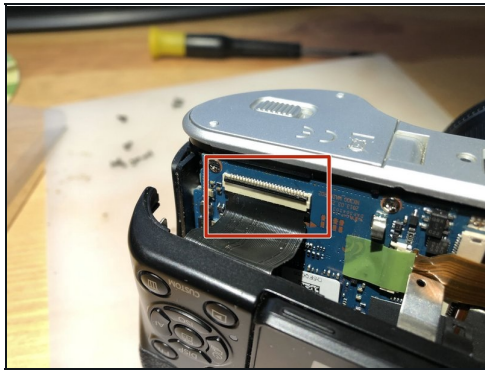
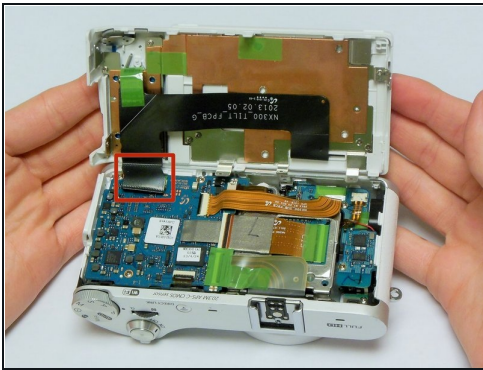
- Using a Phillips #00 precision screwdriver, remove the last 4 mm screw located inside the input ports' compartment.

Step 3 — Open the Camera Casing



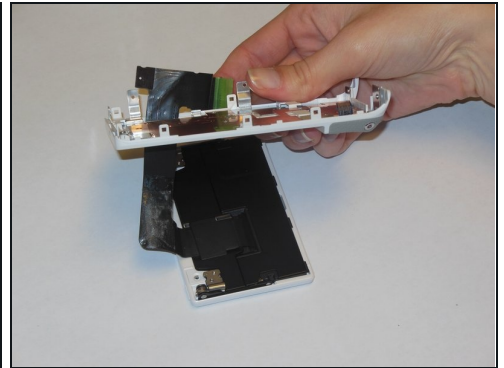
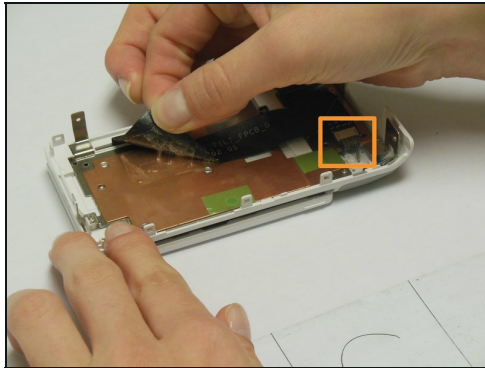
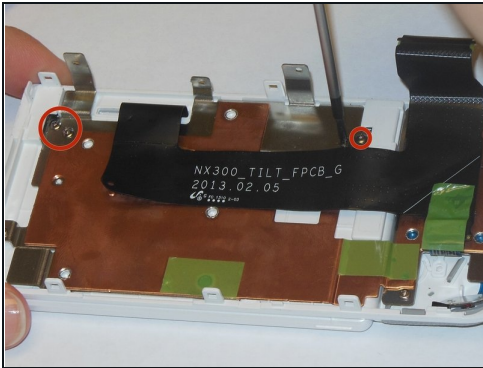
- Place a plastic opening tool into the gap between the back panel and camera body, from both the top and the bottom of camera. Carefully pry open the camera and separate the back panel.

Step 4 — Remove the Back Panel



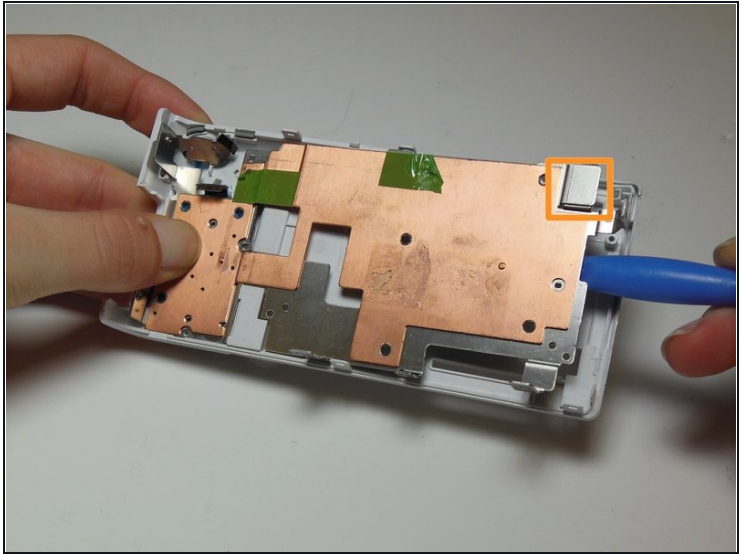
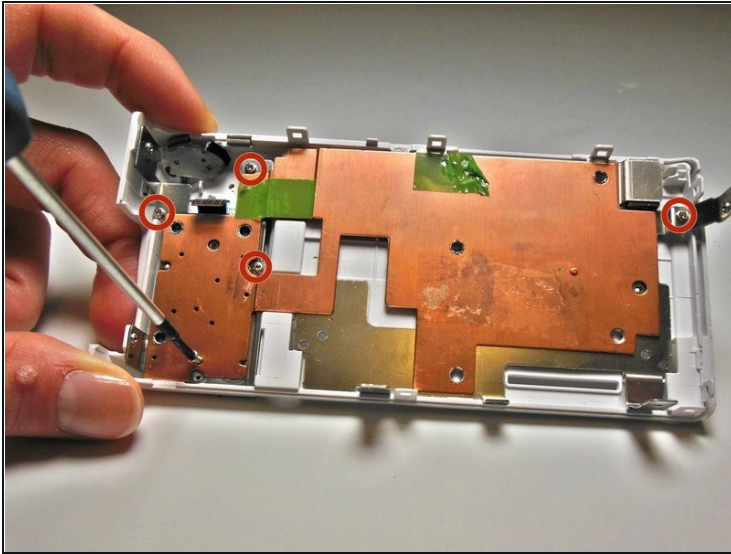
- Using [tweezers](#) or your fingers, pull the display's black ribbon from the motherboard. This frees the back panel altogether.
- ① To safely remove ribbons, you would need to first unlock the holding mechanism by lifting up the black strip atop the ribbon adapter.

Step 5 — Remove the LCD Screen



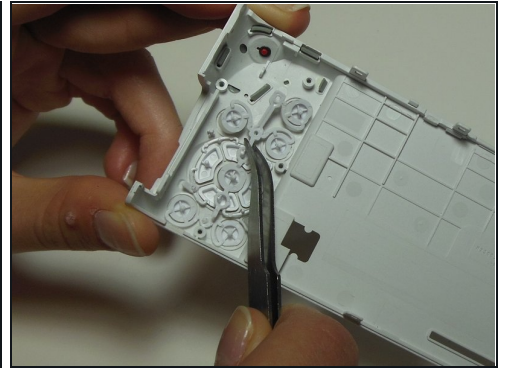
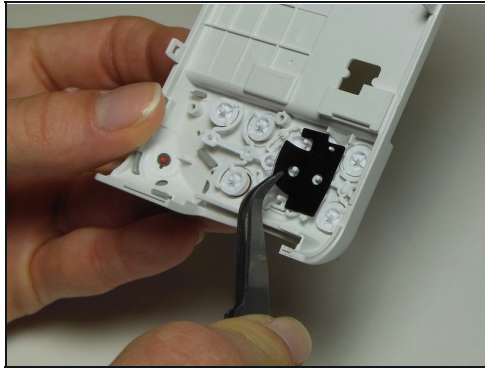
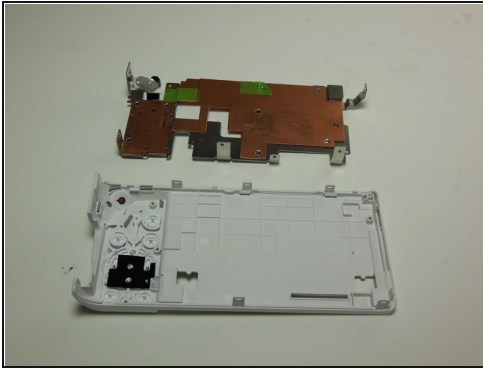
- Using a Phillips #00 precision screwdriver, remove the four 1mm screws that are holding the black supports to the panel.
- Remove the little ribbon tab from the contact pad using [tweezers](#) or your fingers, then peel off the black ribbon from the metallic panel.
- Feed the ribbon through the slot on the back panel to free the LCD Screen. You need to bend the ribbon to get the small tabs through it.

Step 6 — Remove the Metallic Panel



- Using a Phillips #00 precision screwdriver, remove the five 3mm screws.
- Using a plastic opening tool, slowly lift up the entire metal piece from the back of the camera.
 - ① If the panel has never been removed from the camera before, it will be glued firmly to the back panel and will require some force to remove. To prevent breaking the back panel, work the plastic opening tool under different areas of the metal plate until it is completely released.
- There are two small magnetic blocks housed underneath the metallic plate. These are for securing the swivel screen in place while it is closed.

Step 7 — Remove the Menu Buttons



- Once you remove the metallic panel, peel off the black pad from the buttons using tweezers.
- Using tweezers, remove any button you need to by pulling on the plastic strips near the connection point to the back panel.
 - ⓘ If most of the menu buttons need to be replaced, it is better to replace all of the buttons, since the plastic connector pieces break easily during removal.

Step 8 — Free Buttons



- The menu buttons are now free from the camera.

To reassemble your device, follow these instructions in reverse order.