



Xbox One Wireless Controller Faceplate Replacement

There are several screws located on the back of...

Written By: Tommy



INTRODUCTION

There are several screws located on the back of the controller that you need to remove, in order to take the faceplate off.



TOOLS:

TR8 Torx Security Screwdriver (1)

Spudger (1)



PARTS:

Xbox One Controller (1537 and 1697)

Front Panel (1)

Xbox One Controller (1537 and 1697)

Right Handle Cover (1)

Xbox One Controller (1537 and 1697) Left
Handle Cover (1)

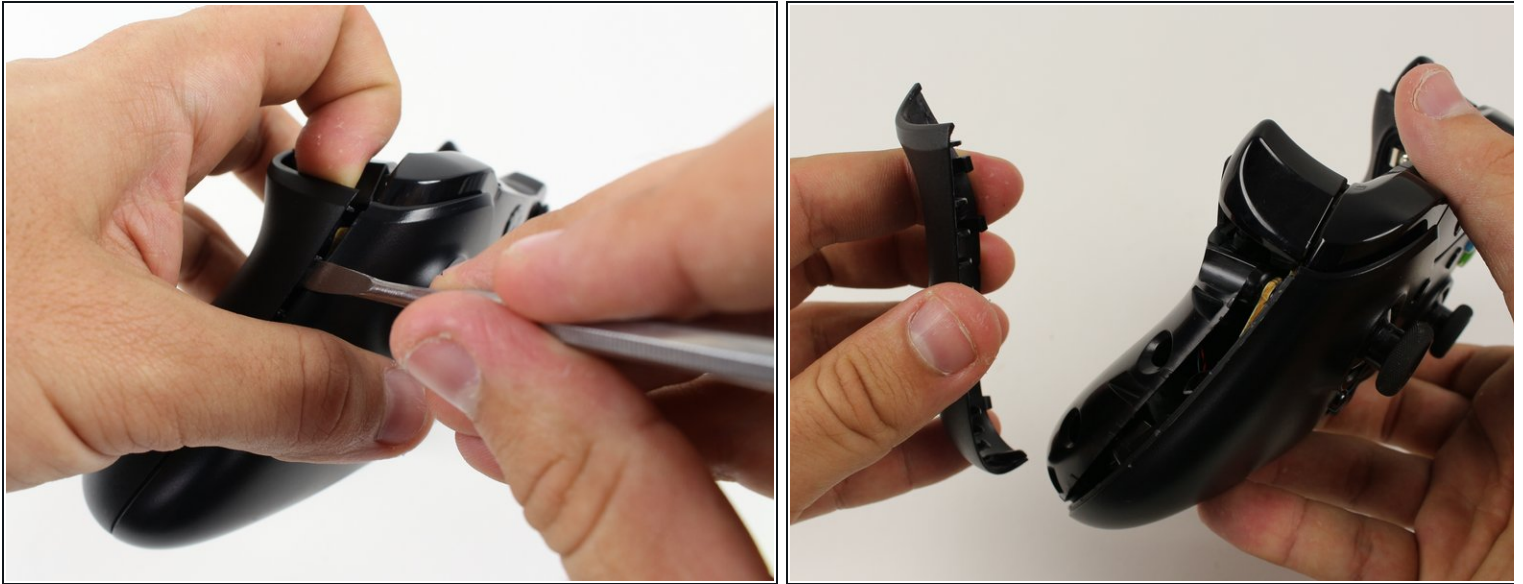
Xbox One Controller (1537) Rear Panel (1)

Step 1 — Battery Pack



- Remove the battery pack cover.
- Remove batteries.

Step 2 — Side Handles



 We recommend using a nylon spudger for this step. A metal spudger is shown.

- Grip the controller firmly to remove the side handles, wedging a spudger into the seam between the front and handle plates.
- Pry the side plate away from the front plate by moving the spudger back and forth. You will need to do this all the way around the side plate's seam.

Step 3 — Screws



- ① There is a hidden screw located in the middle of the controller behind the label.
- Use a screwdriver and punch a hole directly in the center of the label.
- ① You may also lift the label if you do not want to puncture it.
- Remove the five 10mm screws located on the back of the controller using the TR8 **Security** Torx Screwdriver.

Step 4 — Backplate



- Remove the backplate.

Step 5 — Faceplate



- Remove the faceplate.

To reassemble your device, follow these instructions in reverse order.