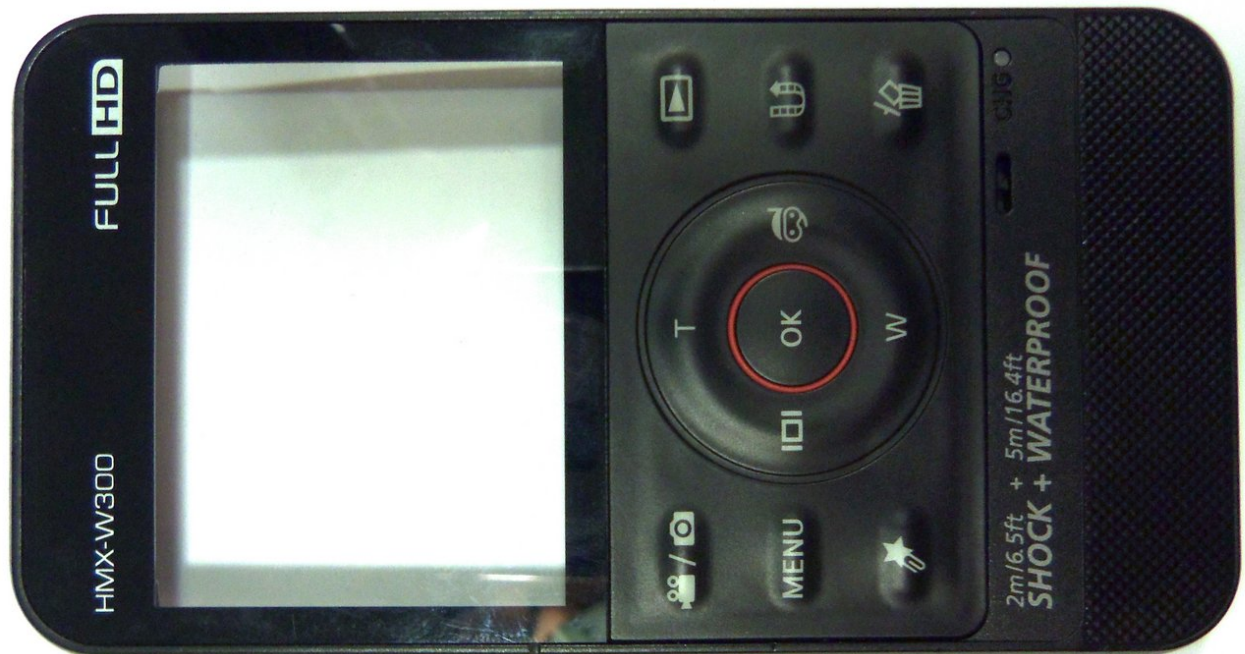




Samsung HMX-W300 Rear Case Replacement

Demonstrates how to replace the rear case of...

Written By: Robert



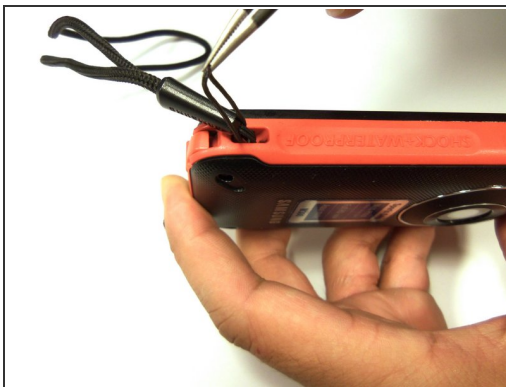
INTRODUCTION

Demonstrates how to replace the rear case of the camera through instructive pictures and words. Replacement of rear case requires the removal of the motherboard and LCD screen.

TOOLS:

- [1.5mm Hex Screwdriver](#) (1)
 - [Phillips #00 Screwdriver](#) (1)
 - [iFixit Opening Tool](#) (1)
-

Step 1 — Disassembling Samsung HMX-W300



- To remove the wristband of the device, grab the middle loop and pull the band through.

Step 2



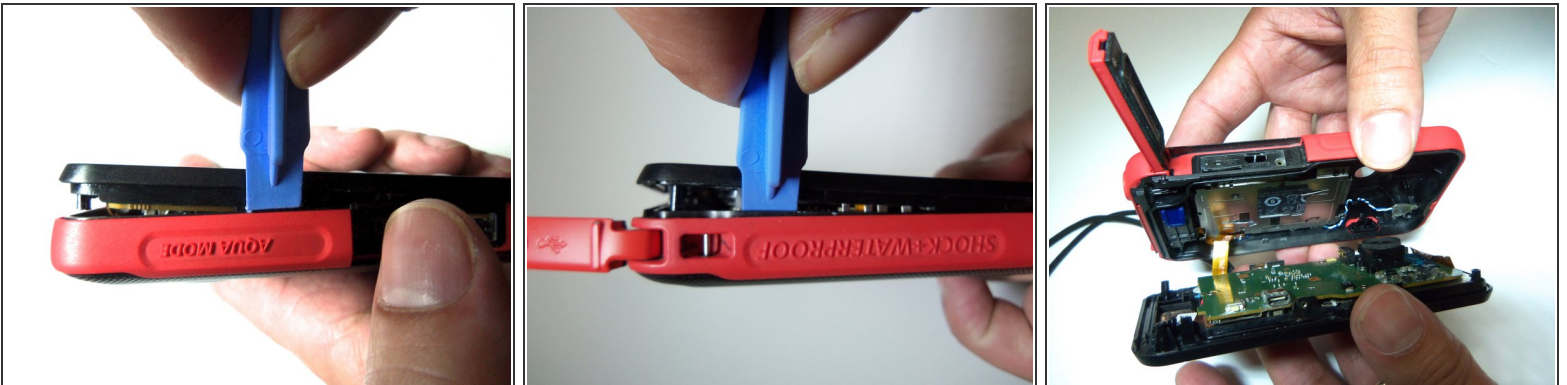
- Remove four screws with a Hex 1.5 mm screwdriver.

Step 3



- Open the HDMI door on the side of the camera.
- Remove the single screw using a Phillips #00 screwdriver.

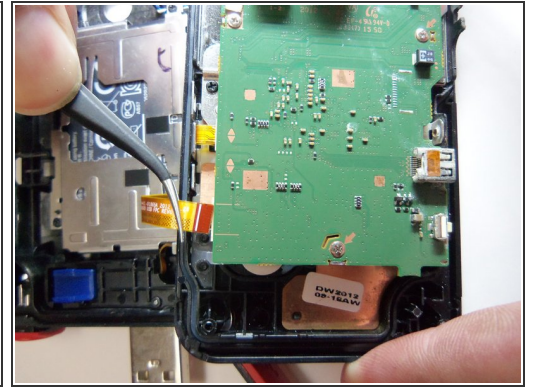
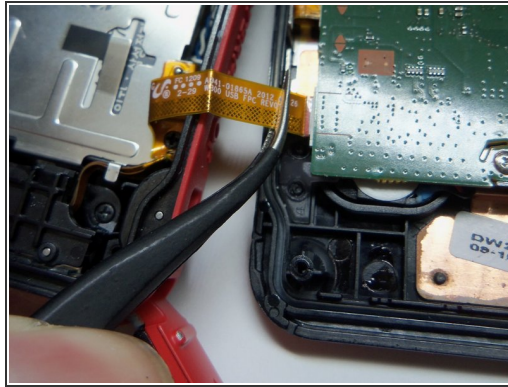
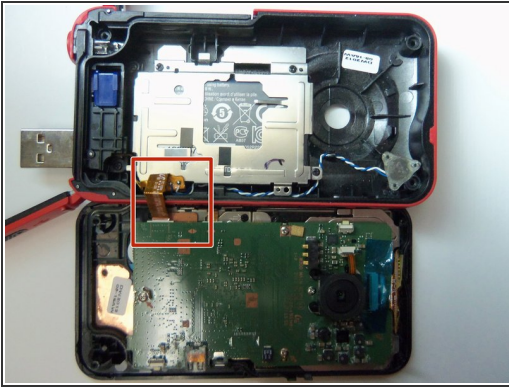
Step 4



- Use the iFixit opening tool on both sides on the device. Pry apart both sections with light force.

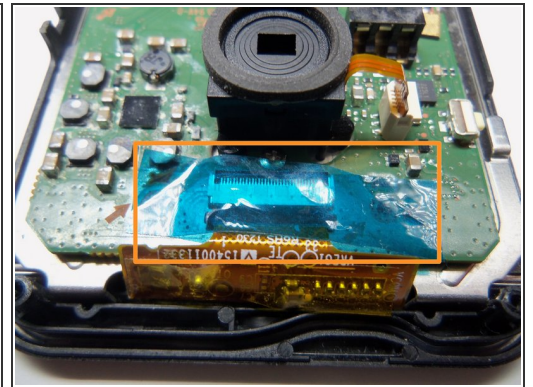
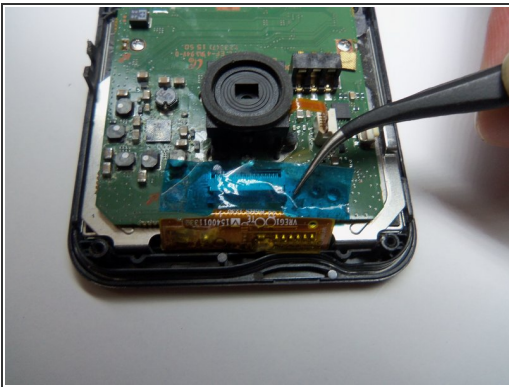
⚠ Do not apply too much force. There is a wire that attaches the front case with the rear case that can be damaged.

Step 5



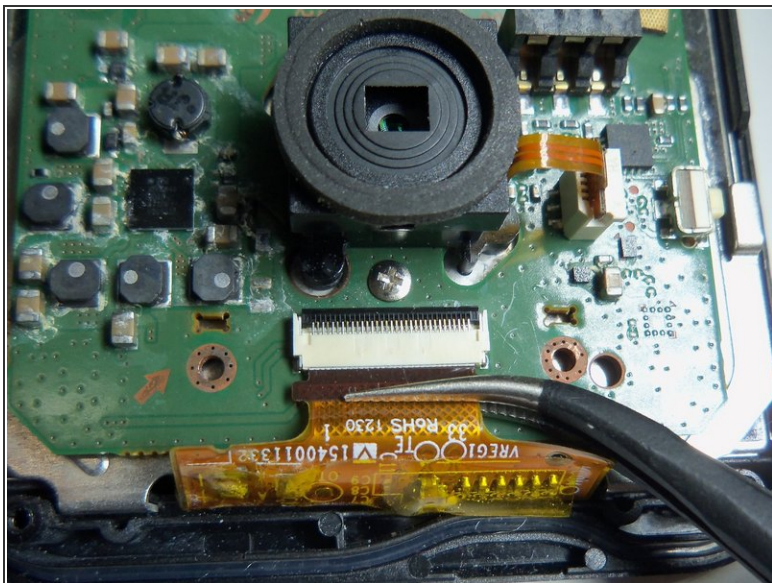
- Pull the wire ribbon out with a pair of tweezers.

Step 6 — Remove tape.



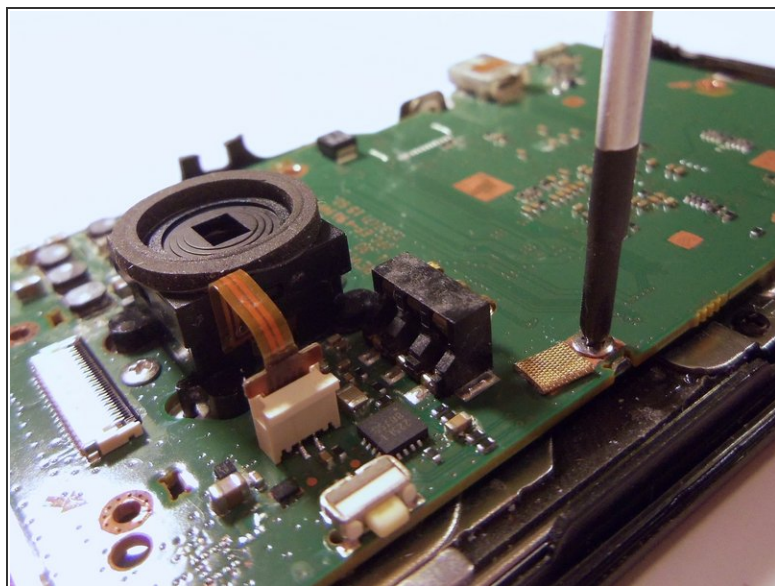
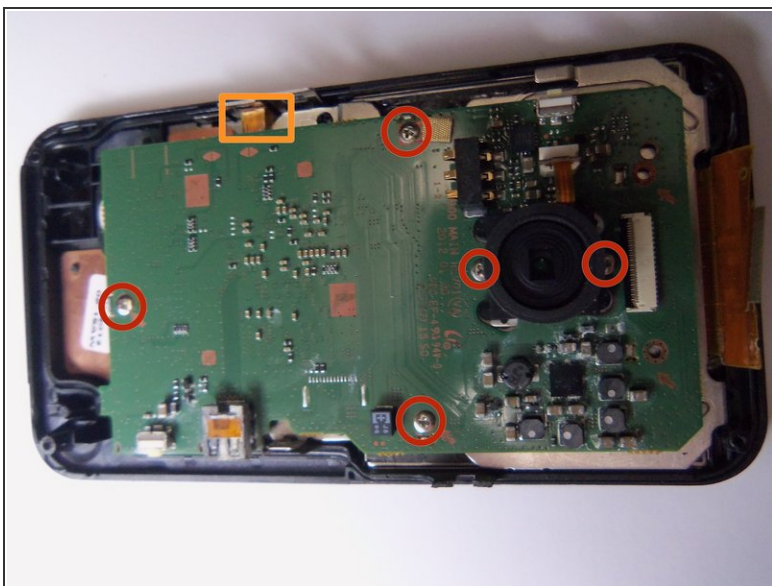
- Use tweezers to remove the tape.

Step 7 — Unplug wire ribbon.



- Use tweezers to grab the wire ribbon, then pull the wire out of connection.

Step 8 — Remove screws.



- There are 5 Phillips size 00 screws. Remove all 5 screws.
- Wire ribbon is attached to the motherboard.

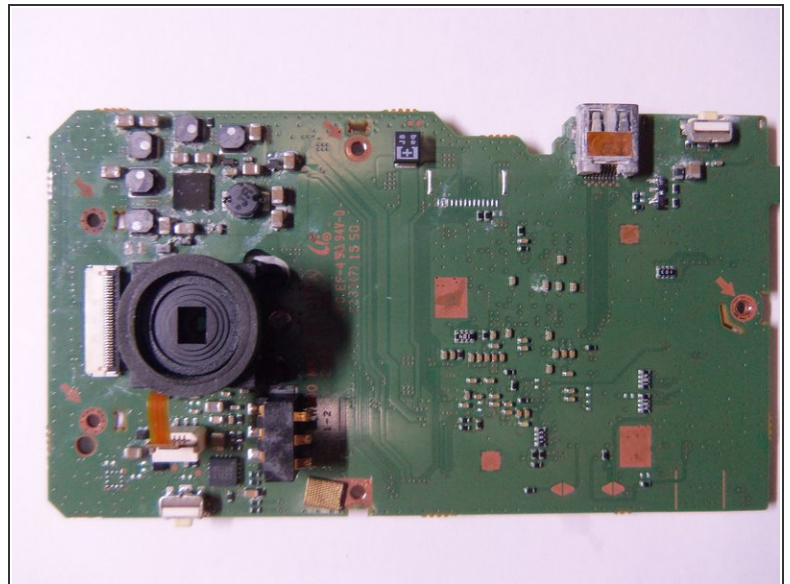
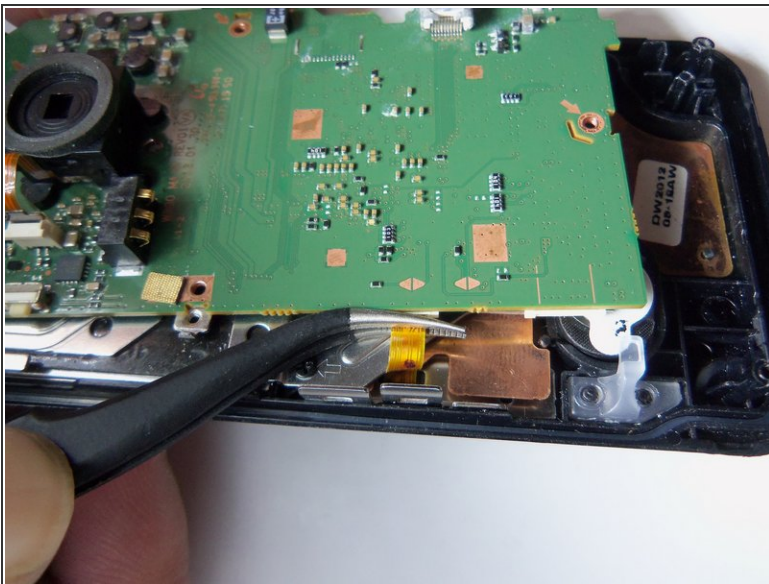
Step 9



- Pry the motherboard up using the plastic opening tool.

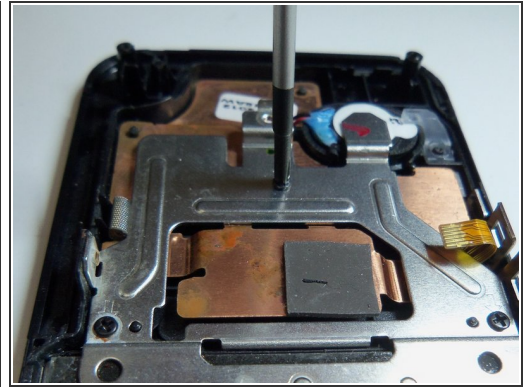
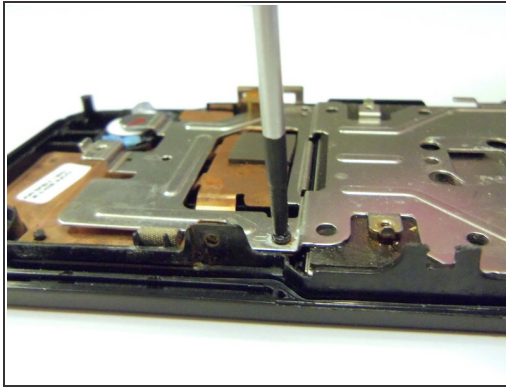
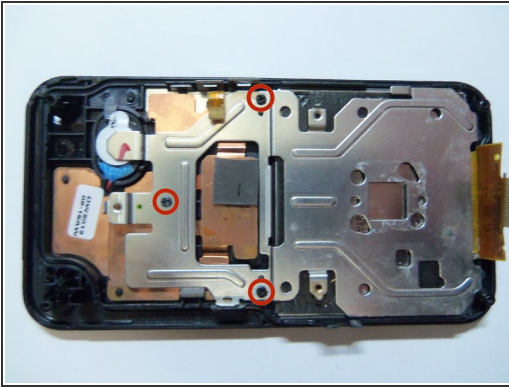
⚠ Be careful there is a wire ribbon holding the motherboard.

Step 10 — Disconnect wire ribbon.



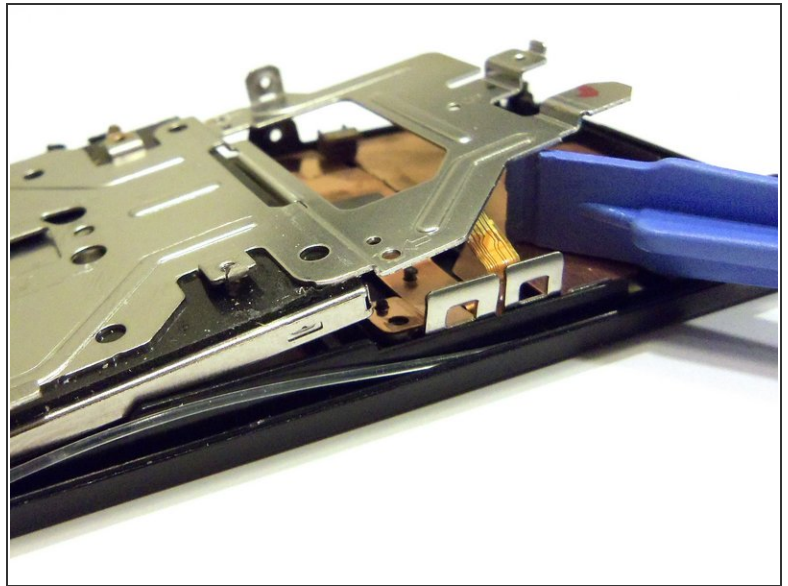
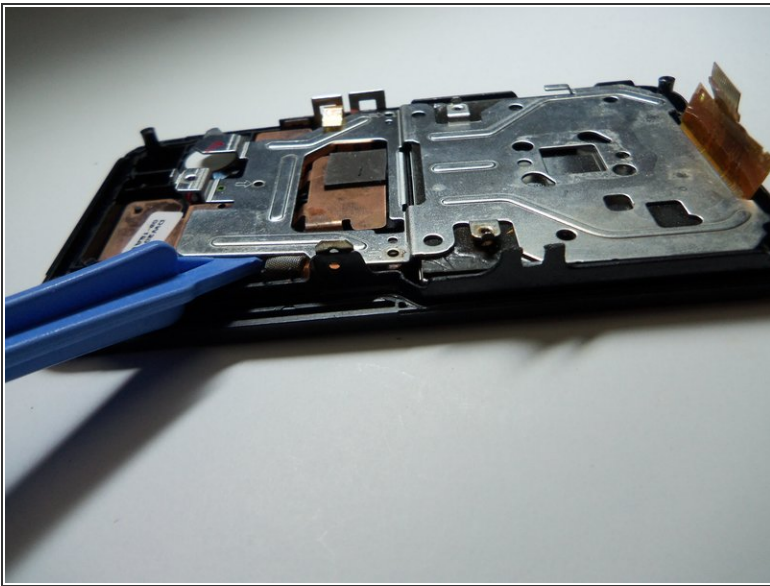
- Use tweezers to disconnect the wire as shown. This will loosen the motherboard from the rear case.

Step 11 — Remove screws.



- Use Phillips size 00 and remove the 3 screws as shown.

Step 12 — Pry screen.



- Pry the end of the screen with the plastic opening tool.

Step 13



- Grab the end of the screen, then pull towards the inside of the case. This is a bit tricky. This will release tabs at the top of the screen to the rear case.

Step 14 — Repalce rear case



- Removal of the rear case is completed.

To reassemble your device, follow these instructions in reverse order.