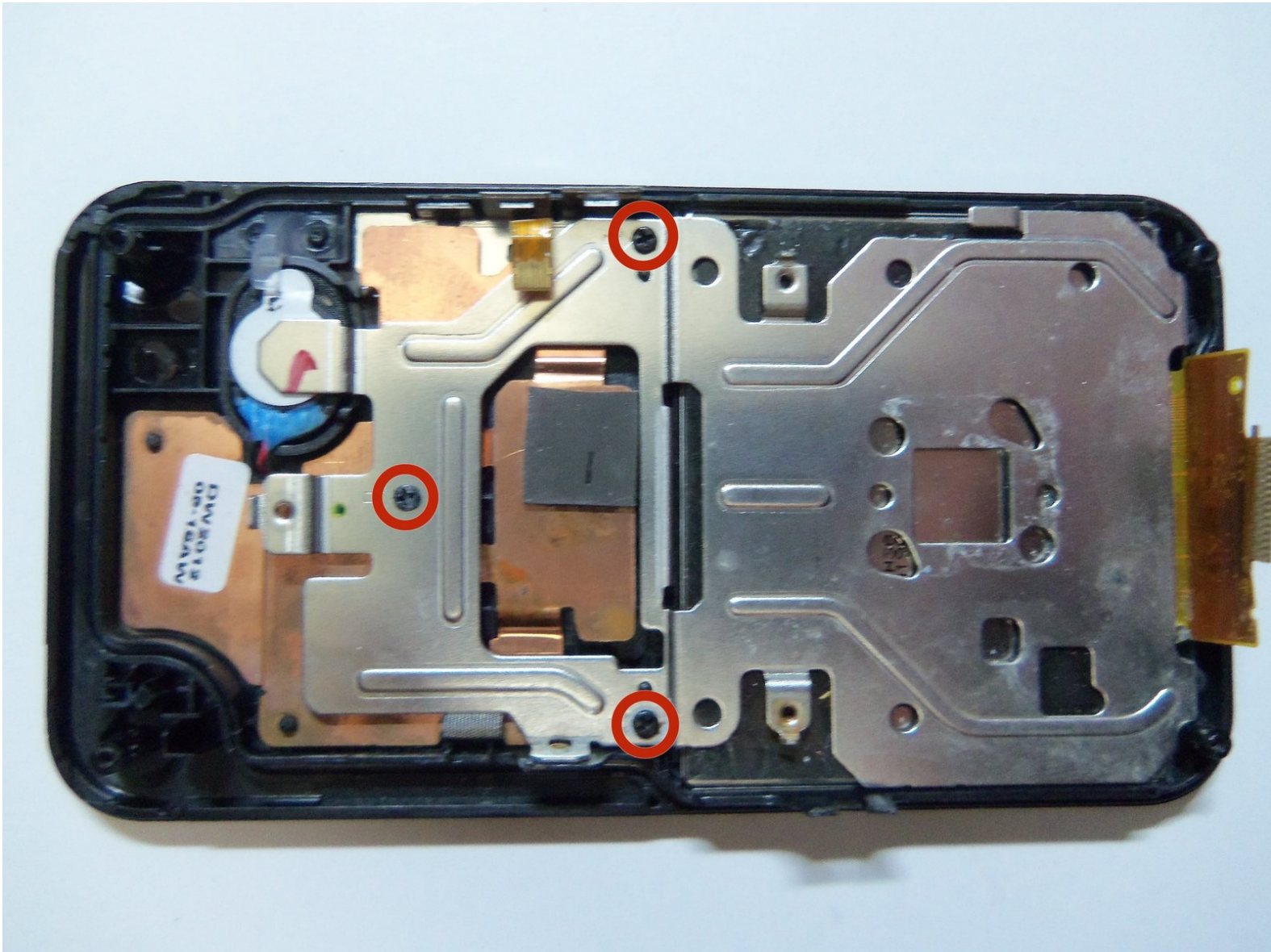




Samsung HMX-W300 LCD Screen Replacement

Shows how to place LCD screen of the camera via...

Written By: Robert



INTRODUCTION

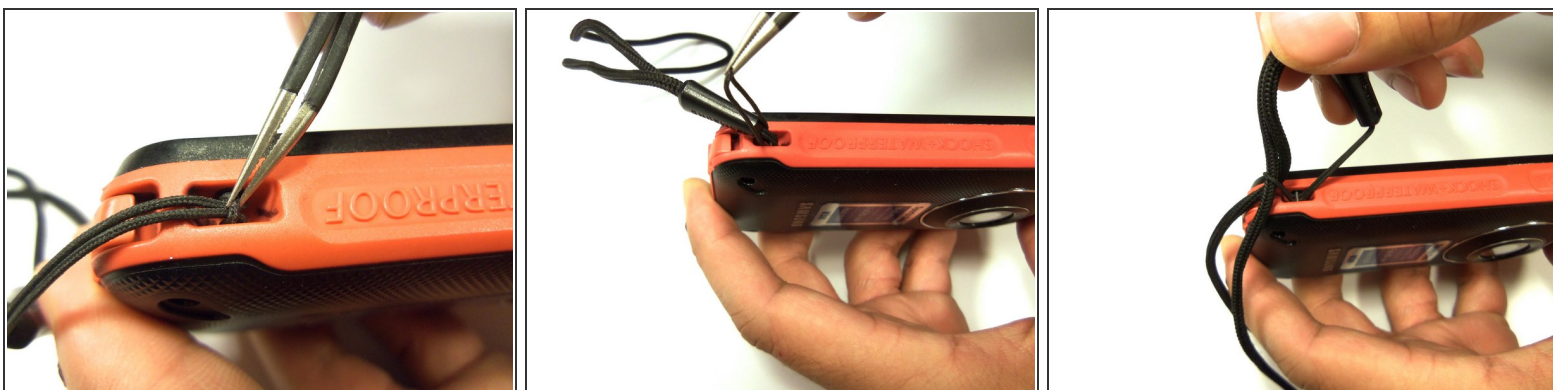
Shows how to place LCD screen of the camera via words and pictures. Replacement of LCD screen requires the removal of motherboard.



TOOLS:

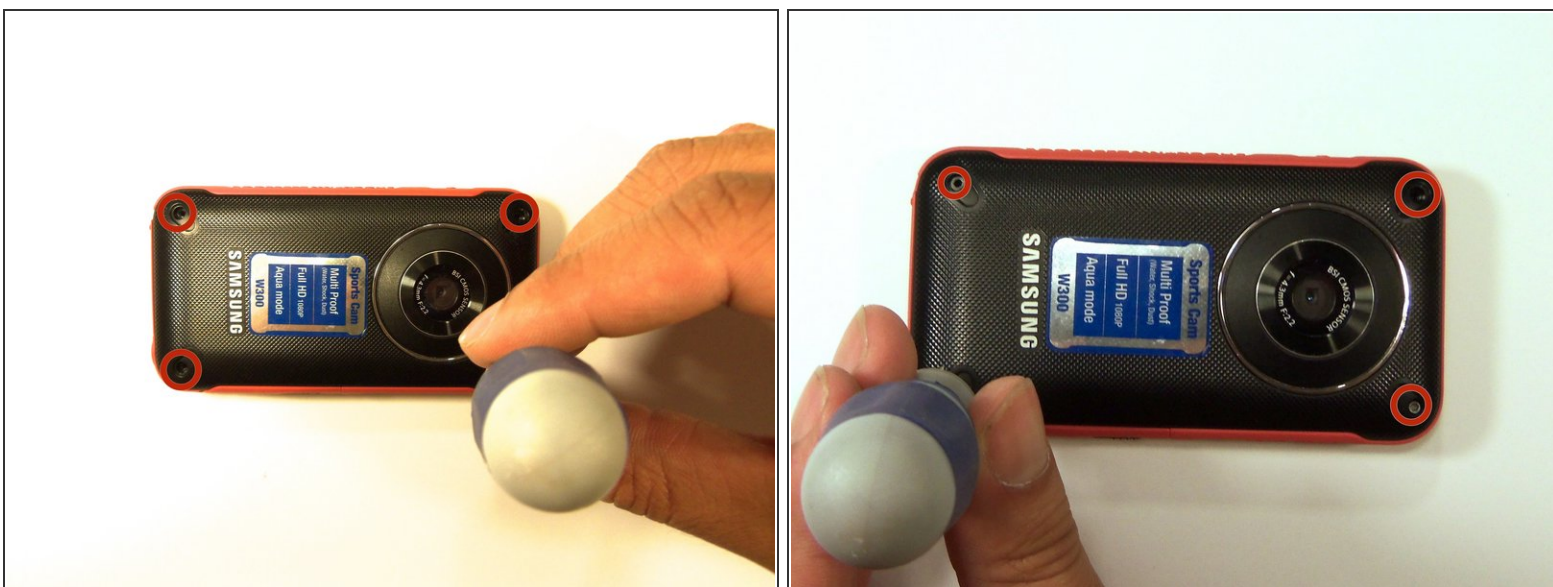
- [1.5mm Hex Screwdriver](#) (1)
 - [Phillips #00 Screwdriver](#) (1)
 - [iFixit Opening Tool](#) (1)
-

Step 1 — Disassembling Samsung HMX-W300



- To remove the wristband of the device, grab the middle loop and pull the band through.

Step 2



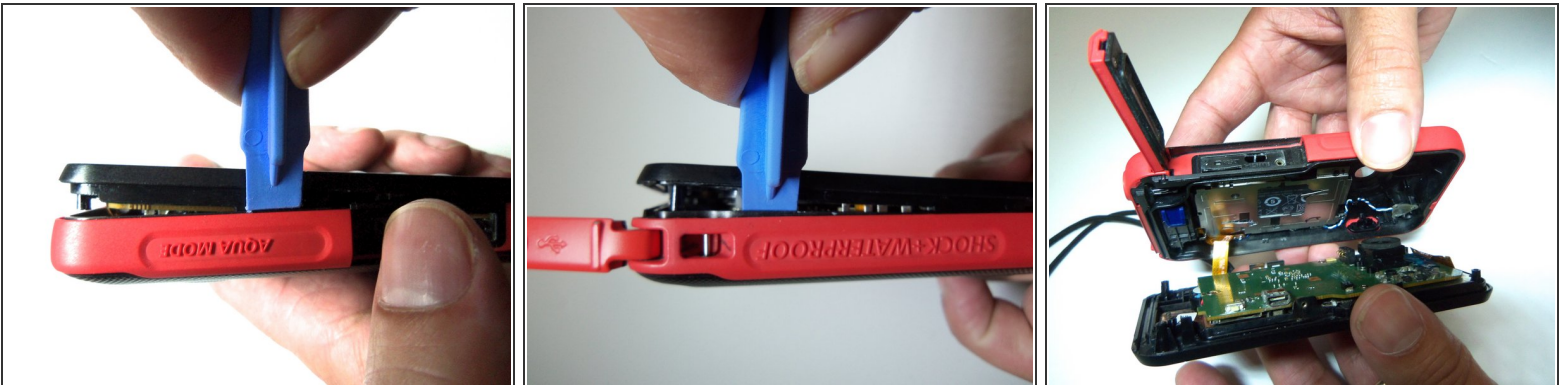
- Remove four screws with a Hex 1.5 mm screwdriver.

Step 3



- Open the HDMI door on the side of the camera.
- Remove the single screw using a Phillips #00 screwdriver.

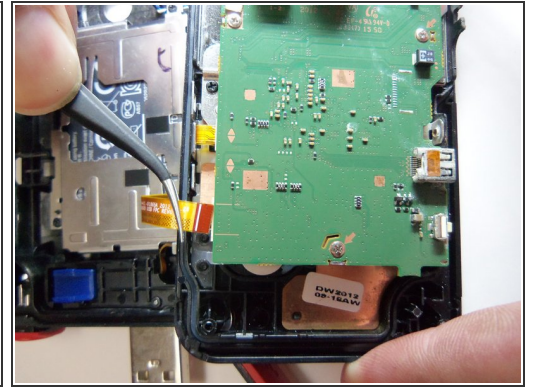
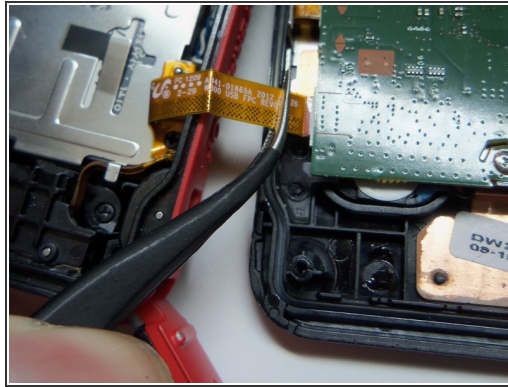
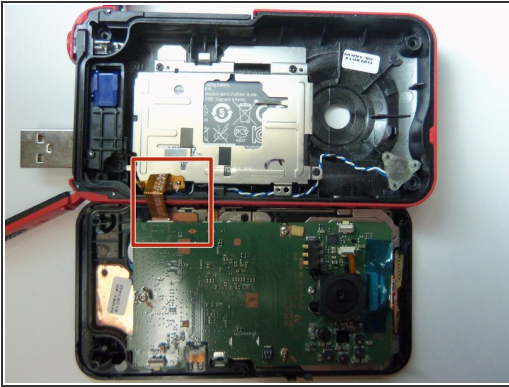
Step 4



- Use the iFixit opening tool on both sides on the device. Pry apart both sections with light force.

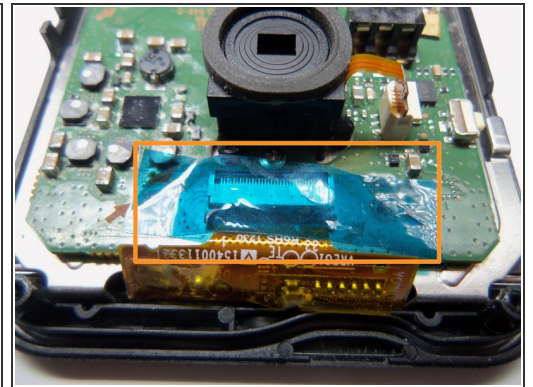
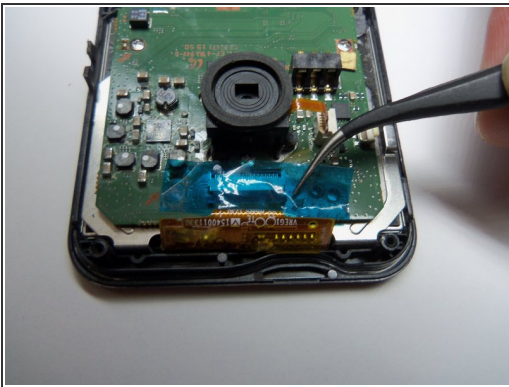
⚠ Do not apply too much force. There is a wire that attaches the front case with the rear case that can be damaged.

Step 5



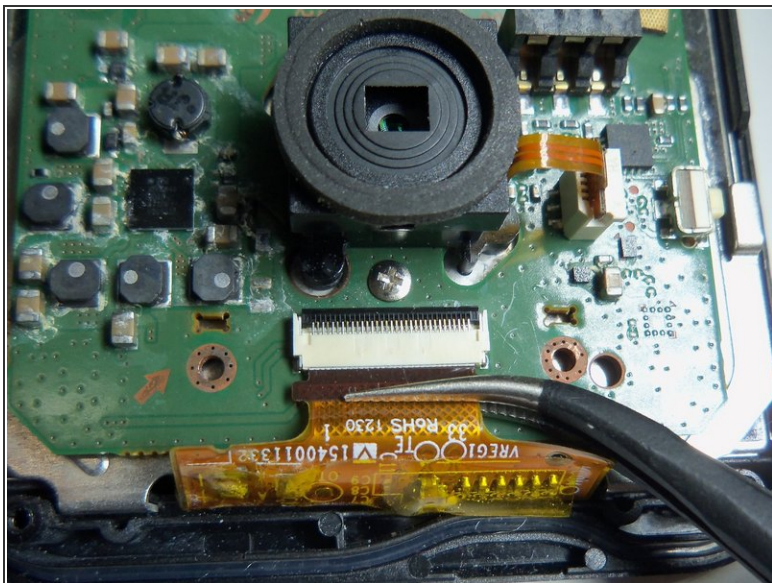
- Pull the wire ribbon out with a pair of tweezers.

Step 6 — Remove tape.



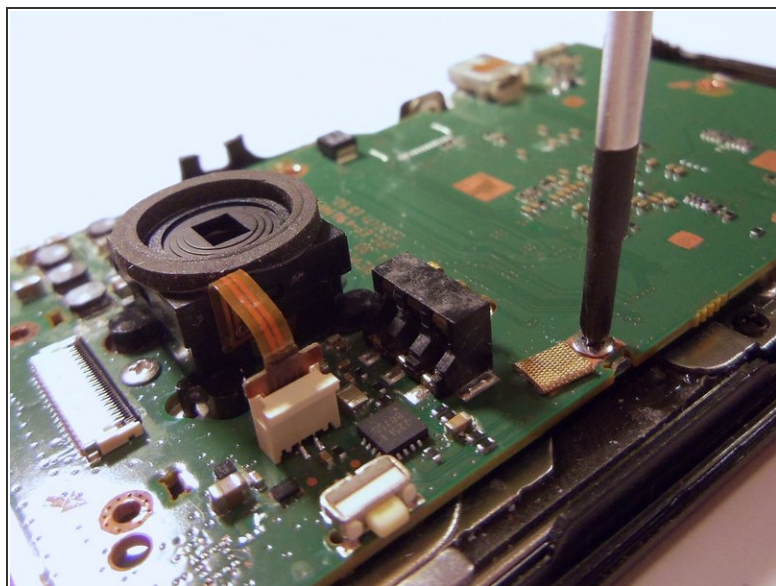
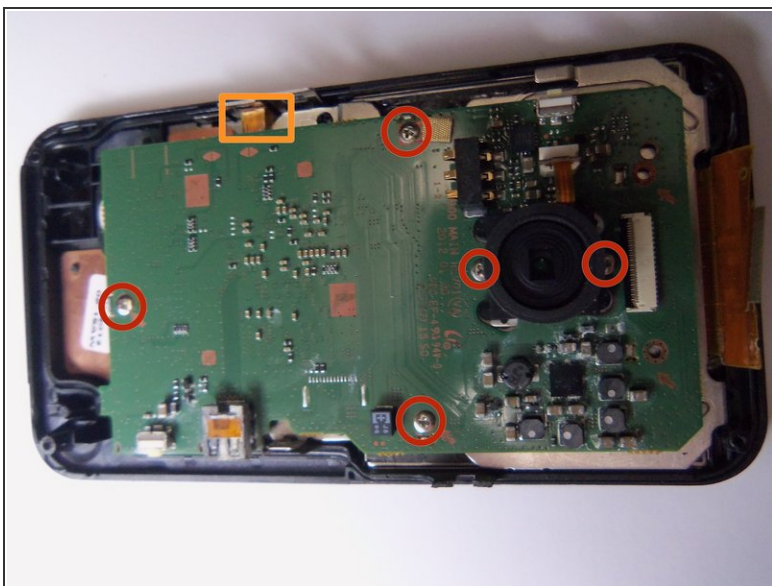
- Use tweezers to remove the tape.

Step 7 — Unplug wire ribbon.



- Use tweezers to grab the wire ribbon, then pull the wire out of connection.

Step 8 — Remove screws.



- There are 5 Phillips size 00 screws. Remove all 5 screws.
- Wire ribbon is attached to the motherboard.

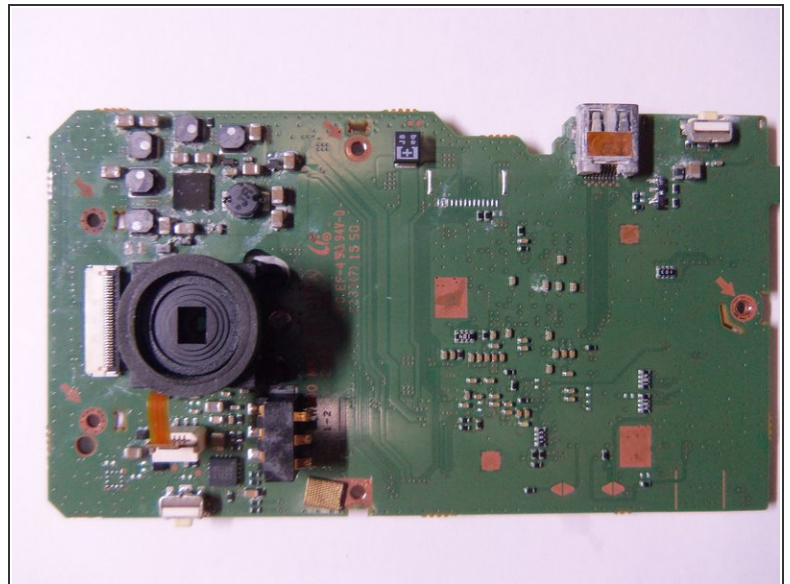
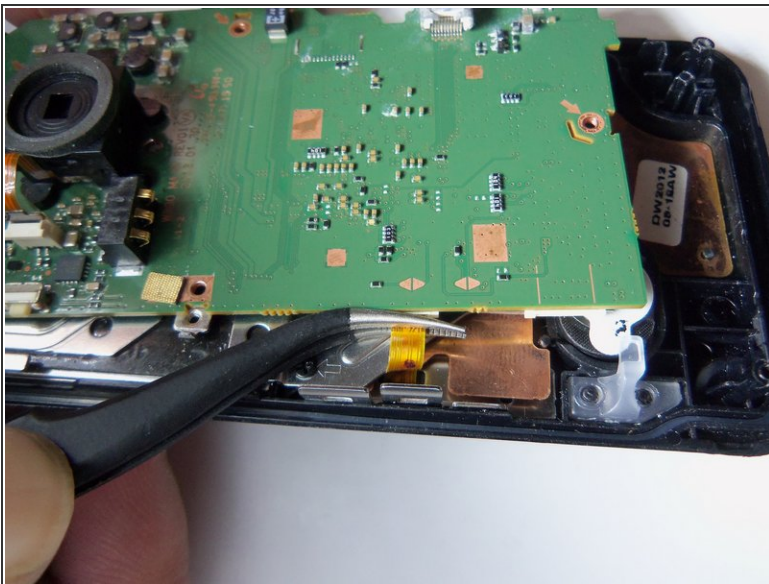
Step 9



- Pry the motherboard up using the plastic opening tool.

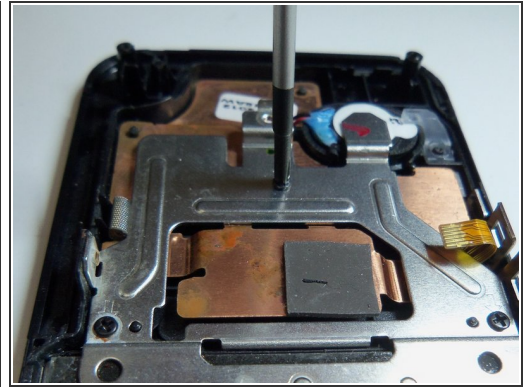
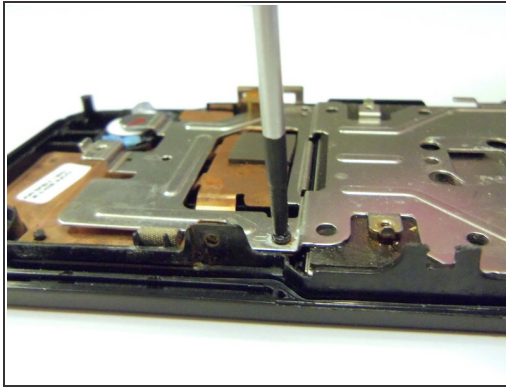
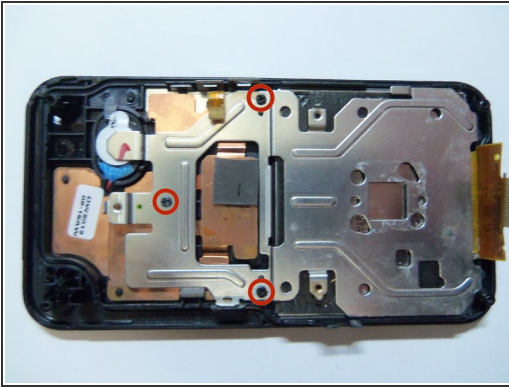
⚠ Be careful there is a wire ribbon holding the motherboard.

Step 10 — Disconnect wire ribbon.



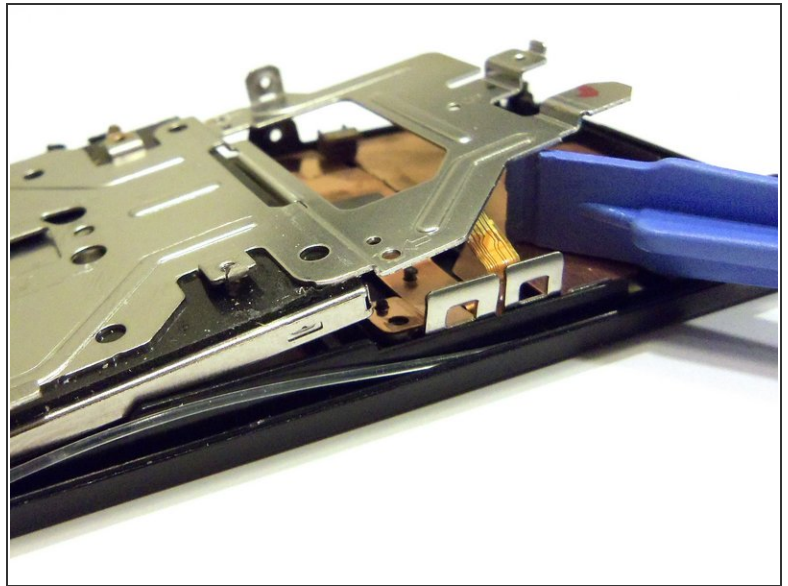
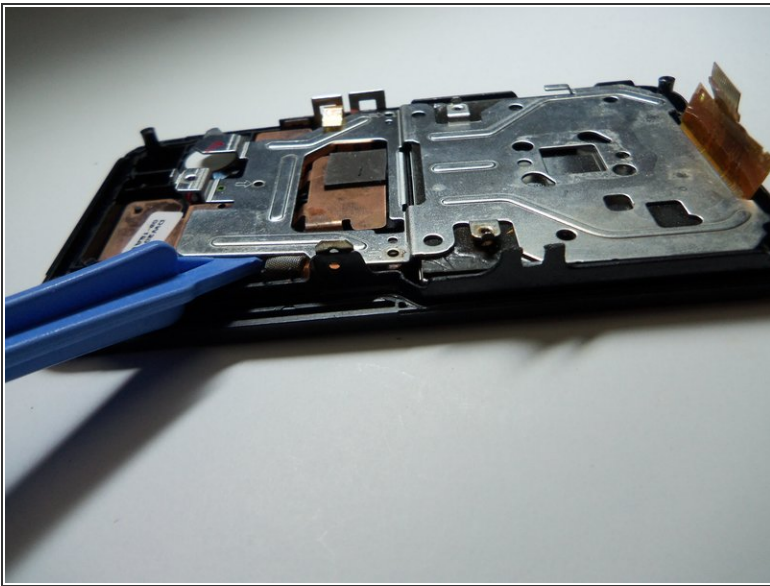
- Use tweezers to disconnect the wire as shown. This will loosen the motherboard from the rear case.

Step 11 — Remove screws.



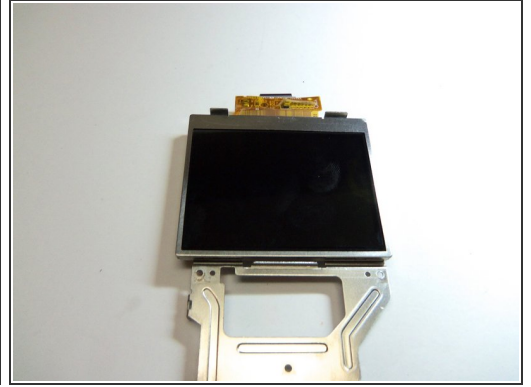
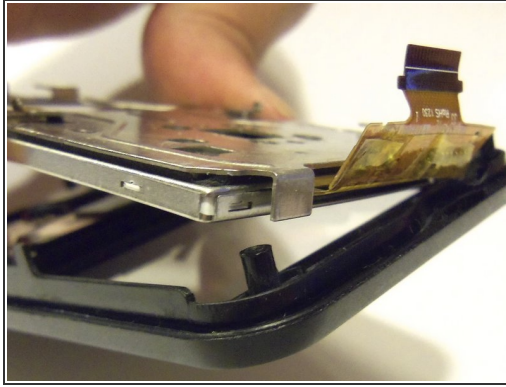
- Use Phillips size 00 and remove the 3 screws as shown.

Step 12 — Pry screen.



- Pry the end of the screen with the plastic opening tool.

Step 13



- Grab the end of the screen, then pull towards the inside of the case. This is a bit tricky. This will release tabs at the top of the screen to the rear case.

To reassemble your device, follow these instructions in reverse order.