



Archived

Kenwood Chef Gear Drive SER1018 Replacement

Disassemble the gear to replace the "Vertical...

Written By: Bruno M



INTRODUCTION

Disassemble the gear to replace the "Vertical Drive Shaft" and the "Planet Hub"

TOOLS:

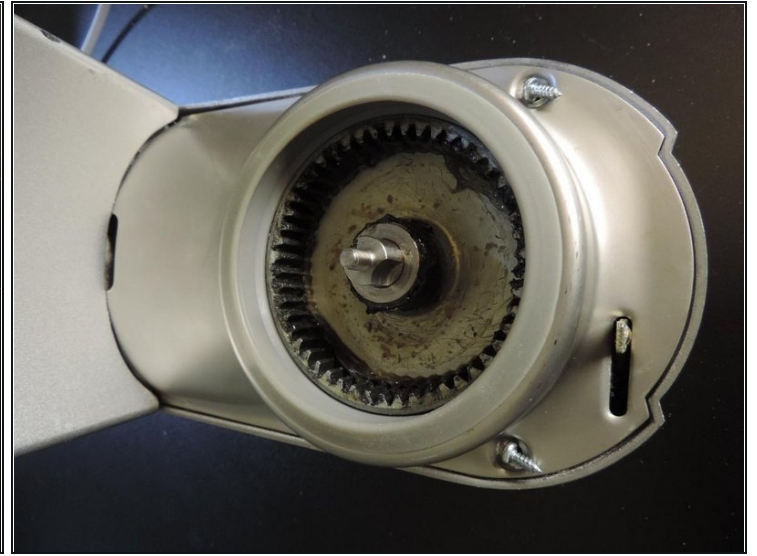
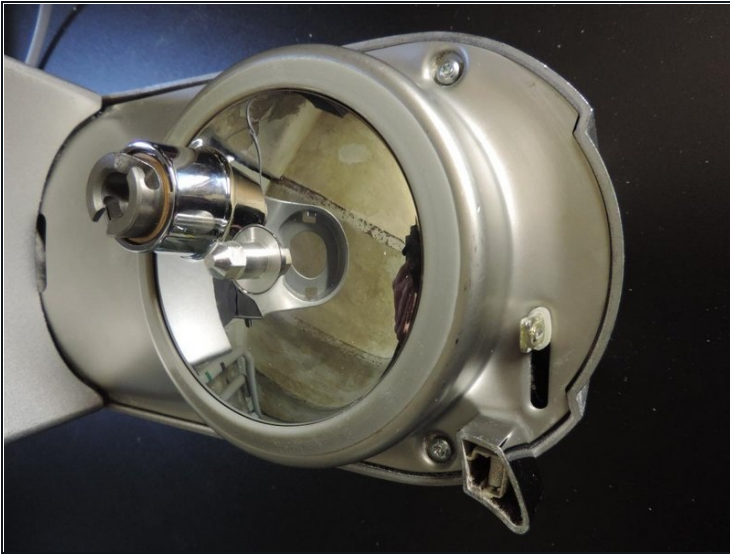
[Essential Electronics Toolkit](#) (1)

Step 1 — Remove knob of outlet catch



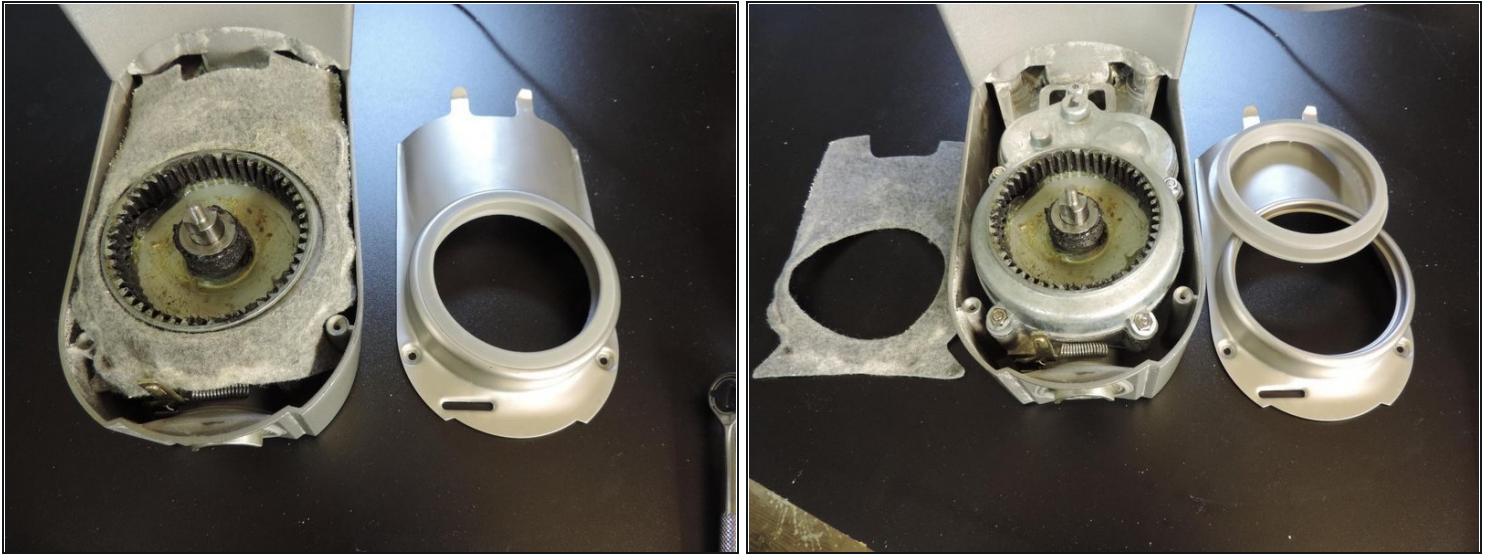
- Knob can be **pulled** away
- Take care of the **white rubber** piece

Step 2 — Disassemble "Planetary Hub"



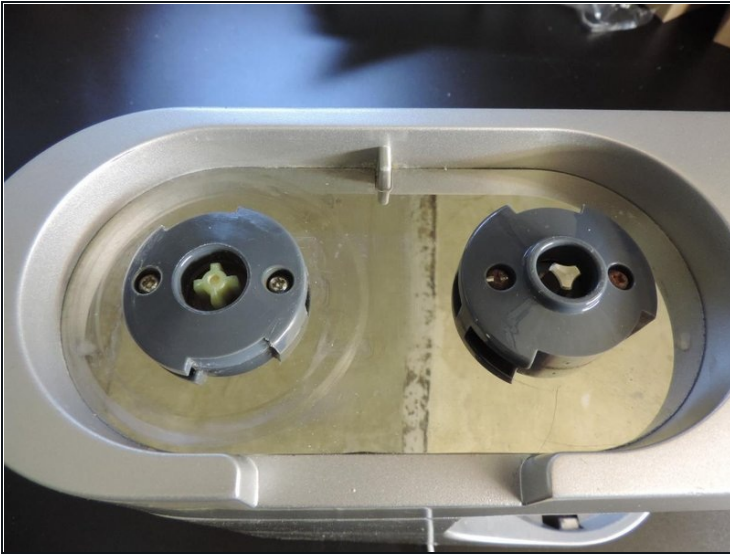
- Loosen hex nut
- **Pull** "Planetary Hub" **straight** away
- Loosen Torx screws holding the lower housing

Step 3 — Lower housing



- Take away lower housing
- Rubber can be taken away for cleaning
- Take away damping lint

Step 4 — Low- and high-speed outlet



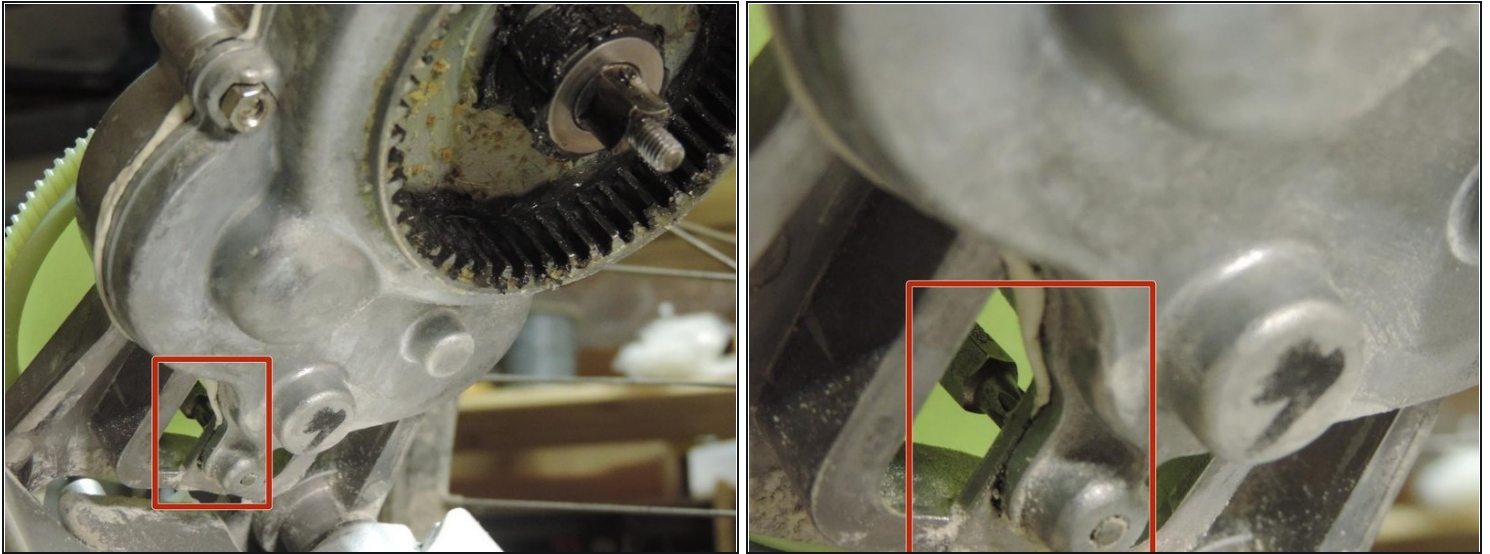
- Unscrew to take away the plastic parts
- The parts are **different**
- The screws have **no metric thread**

Step 5 — Upper Housing



- Unscrew the 3 Torx
- Lift off the Upper Housing
- Take care of **white rubber** marked with the red square

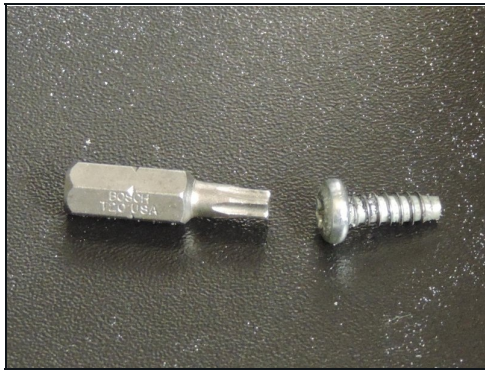
Step 6 — Challenge: Unscrew hidden screw



① According to "[Jens](#)" the **plastic wheel can be removed by turnig it counter-clockwise** when the gear is blocked. "[Julien](#)" found a [YouTube-Video](#) showing how to proceed. Starting at 7:25. Thank you to Jens and Julien.

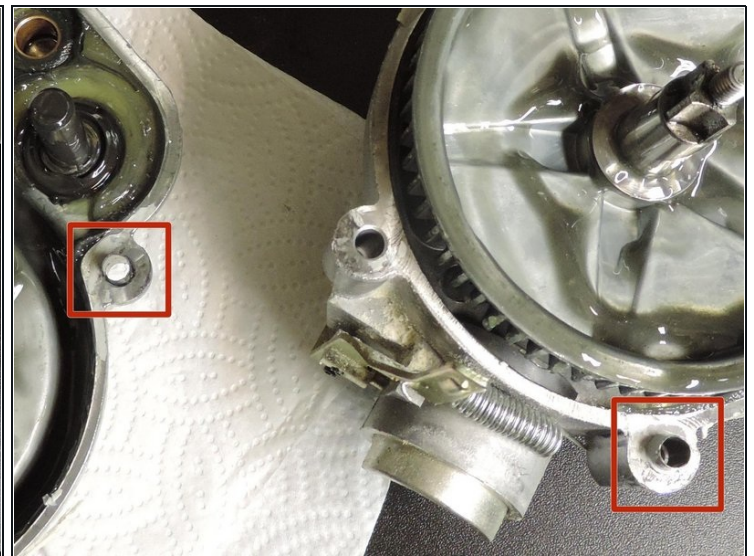
- **No need to proceed with the custom tool if the plastic wheel has already been removed in the previous step**
- The tricky part is to unscrew the Tx20 screw located under the plastic wheel
- I was not able to pull the plastic wheel from the shaft
- If you like the risk you might drill a hole in the plastic wheel for easy access
- I used a **custom tool** -> see **next step**

Step 7 — Custom tooling



- I machined a 6 mm wrench to fit on the Tx20 bit
- After removal I slotted the screw for easier mounting

Step 8 — Open gear box



- Take care of the **guides** (red markers). They can be pushed in after closing the gear box
- Take away the **sealing**. To reseal I used sealant normally used in washing rooms.

Step 9 — Planet Hub



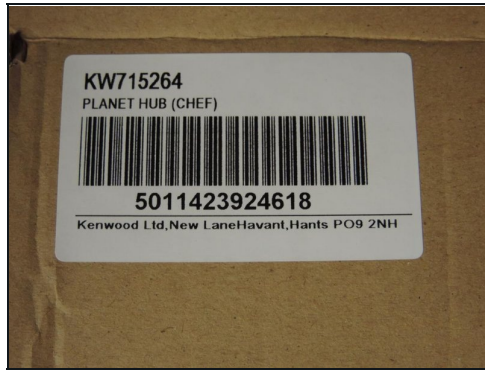
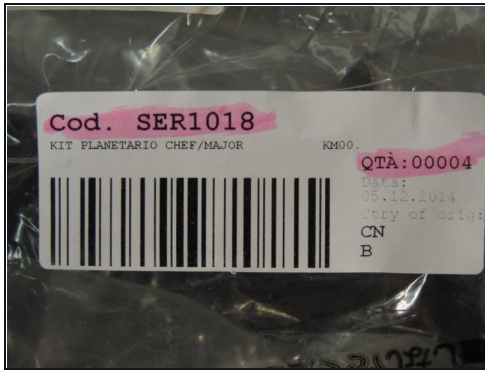
- The one with the cross is the old one
- The bayonet doesn't look the same but the tools fits as before. The position of beater and whisk stay the same in respect to the bowl
- The thickness change of the gearwheel doesn't seem to matter

Step 10 — Vertical Drive Shaft



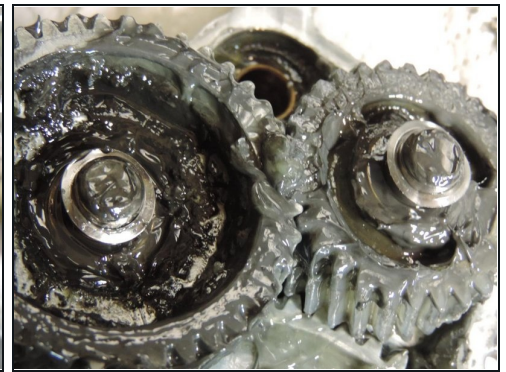
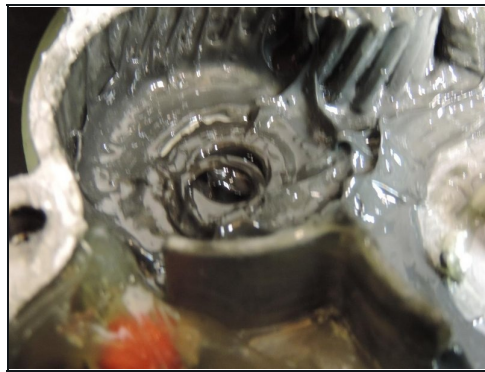
- The one with the cross is the old one

Step 11 — Labels



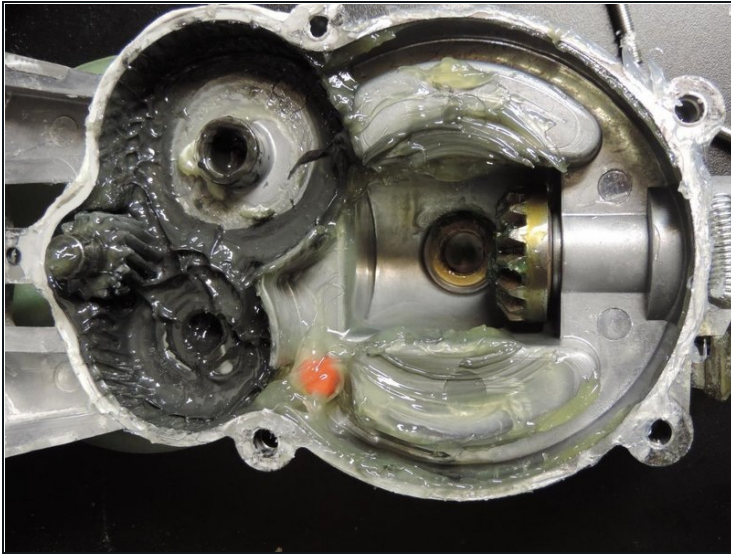
- Cod. SER1018: Label of the bag containing the tree parts
- Label of "Planet Hub"
- Label and part designated "Planet Hub Nut"

Step 12 — Mount the gearwheels



- Put each gearwheel on its axle
- Take care of the two **washers**

Step 13 — Assemble the Gear Box



- There is plenty of **grease**. Put it on the parts to be greased.
- Put **sealant** on the box (see step 8)
- Place the **machine upright** standing in the normal working position with **lowered arm**. The front axle will fall out if the arm is in the upper position.
- **Gently** slip the lower part in the upper part
- As the screws were loose when disassembling, I put a drop of thread locker before mounting.
- Mount the **guides** in the correct place

Step 14 — Insert hidden screw



- Insert hidden screw
- Tighten with custom tool of step 7

To reassemble your device, follow these instructions in reverse order at step 6.