



Uniden Dect 6.0 Display Replacement

A guide on how to replace a Uniden Dect 6.0 home phone main screen.

Written By: Megan Lawrence



INTRODUCTION

This guide shows you how to replace the display on a Uniden Dect 6.0 home phone. Use this guide if you have a poor quality display or no display at all on the phone's LED screen.

Make sure the screen isn't faulty due to the battery before moving on. Check the [Uniden Dect 6.0 Troubleshooting](#) page for more information.



TOOLS:

- [Phillips #1 Screwdriver](#) (1)
 - [Tweezers](#) (1)
-

Step 1 — Battery



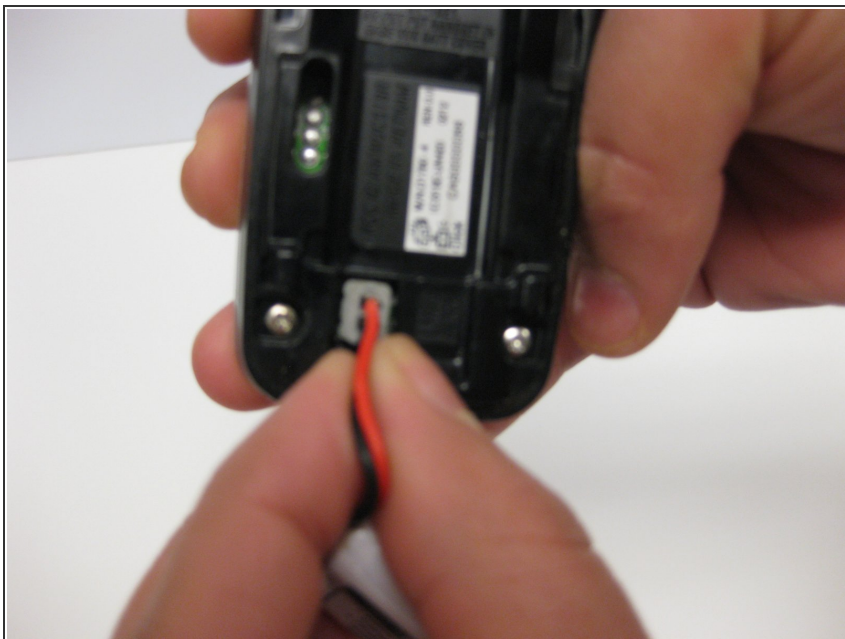
- Locate the battery compartment on the back of the Uniden home phone.
- Place your finger on the groove, and pull directly back on the cover to access to the battery.

Step 2



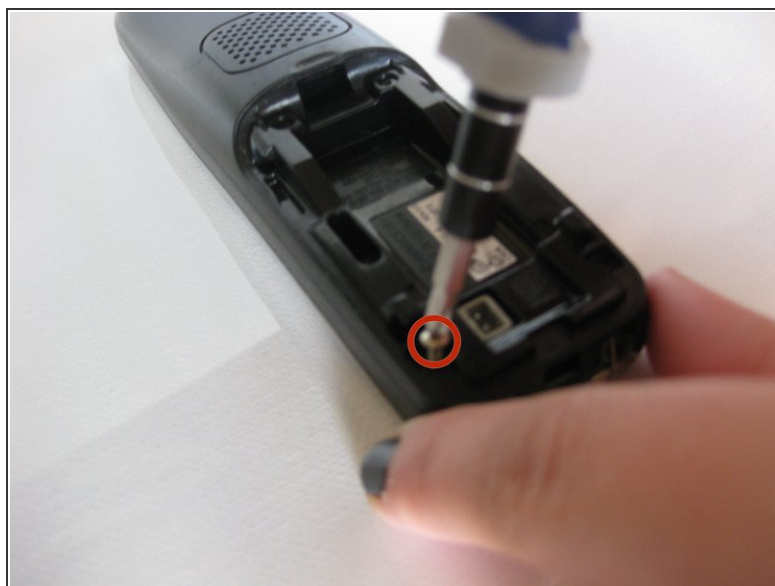
- Remove the white battery pack from the battery compartment.

Step 3



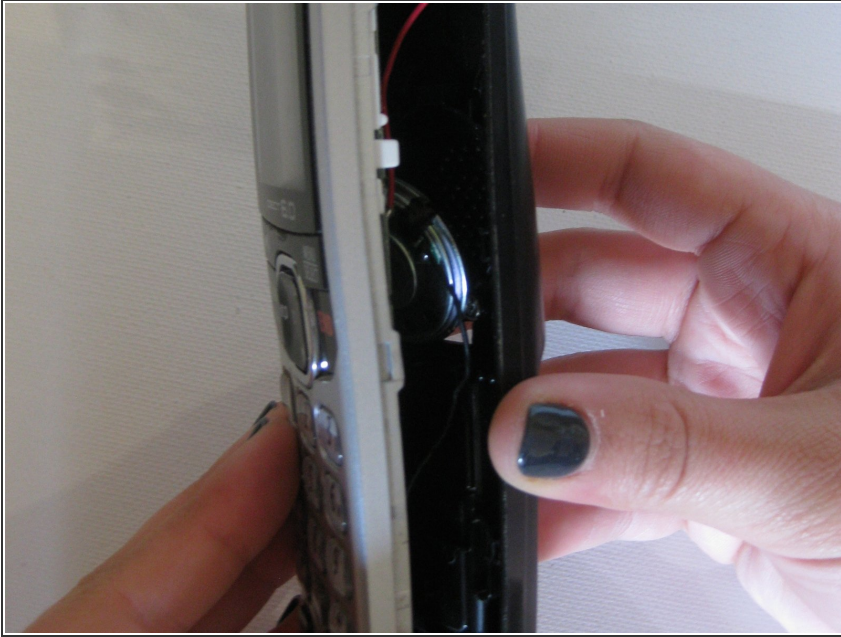
- Remove the red-and-black-wired port from the plug directly under the battery compartment.

Step 4 — Keyboard




- Using a Phillips #1 screwdriver, remove the two .9 mm screws on the back of the device on each side of the battery pack.

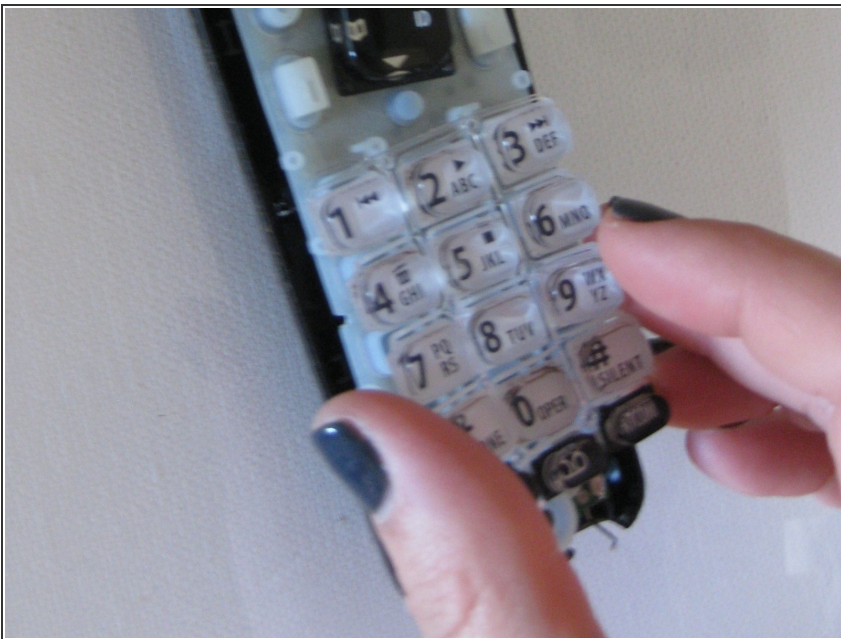
Step 5



- Using your fingers, gently lift and separate the front of the housing from the back housing.

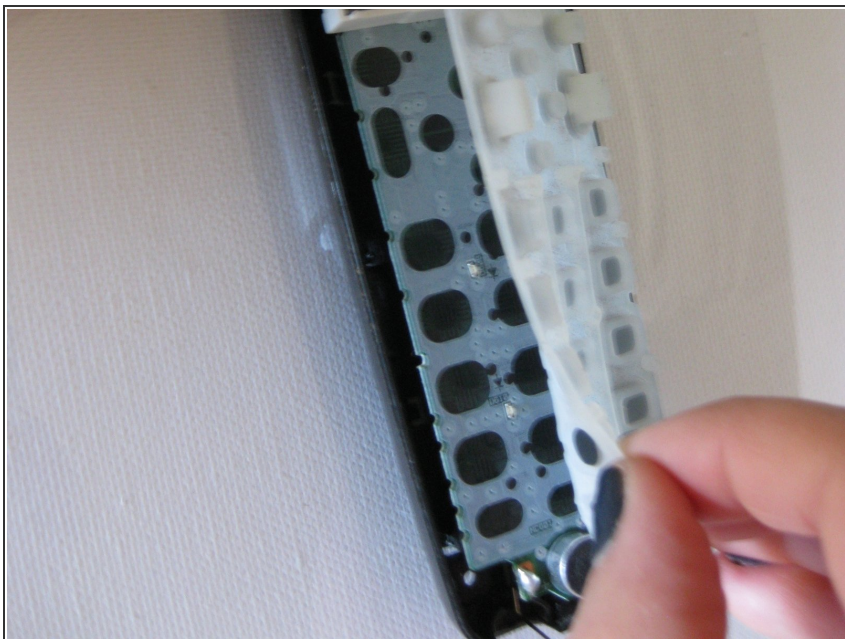
 Potential for device damage: While separating the back housing from the front, be sure to open from the sides as pictured.

Step 6



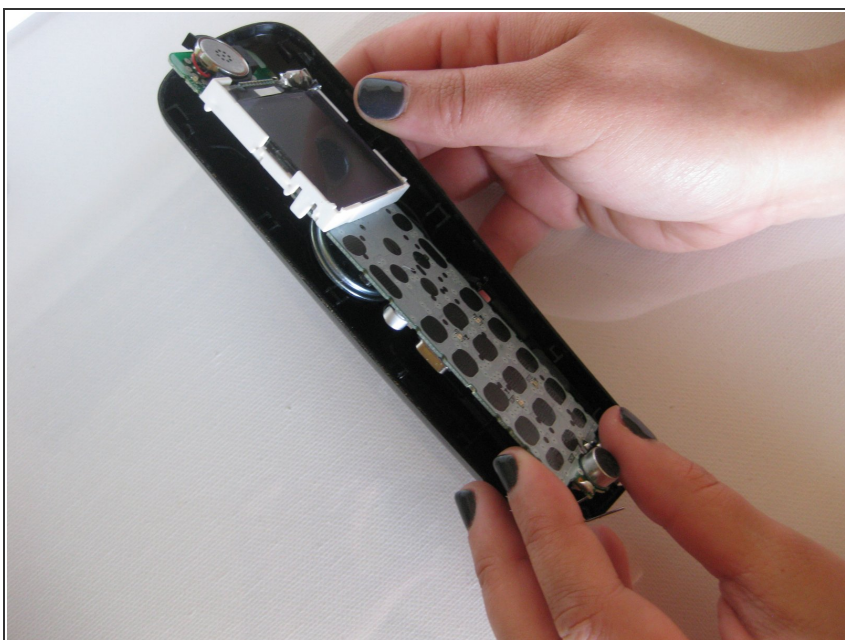
- Gently remove the loose keyboard from the lined gel casing located under the front housing of the front of the phone.

Step 7 — Gel Casing



- To better access the screen, remove the loose gel casing that sits under the keyboard.

Step 8



- Lift out the attached motherboard piece and turn it sideways to access the side of the phone.
- ⚠ Potential for device damage: Use caution to avoid severing the wires that connect the motherboard to the phone.

Step 9



- Gently use the tweezers to access the motherboard panel and lift it straight up.

To reassemble your device, follow these instructions in reverse order.