



HP Pavilion Touchsmart 11z-e000 WLAN Card Replacement

This guide is to help you replace your laptop's wireless card.

Written By: Nguyen



INTRODUCTION

If your wi-fi keeps disconnecting or cannot connect at all even when other devices work properly, consider replacing your wireless card.



TOOLS:

- [Small Phillips Head Screwdriver](#) (1)
 - [iFixit Opening Tools](#) (1)
-

Step 1 — Battery



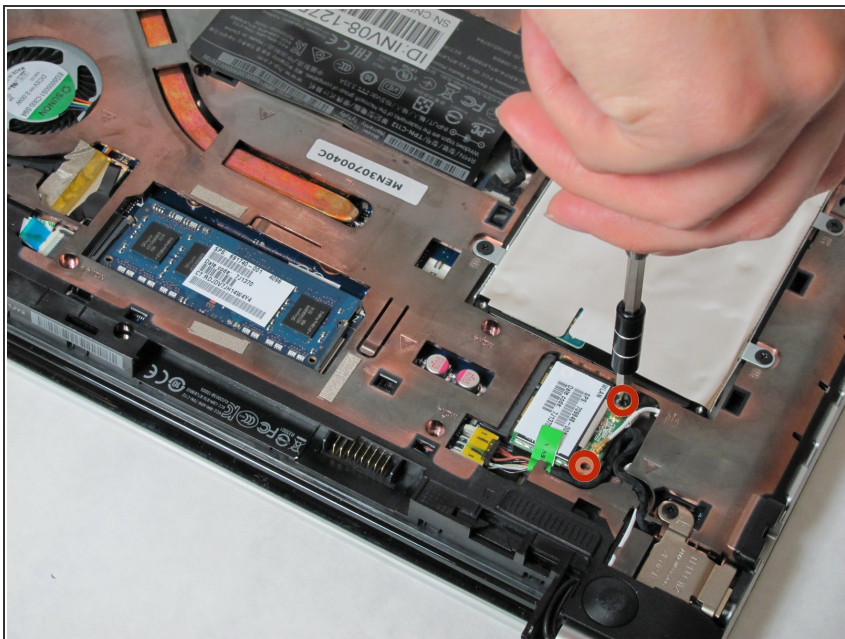
- Remove battery by pushing the two tabs and pulling the battery outwards slowly but firmly.

Step 2 — Remove back plate



- Using a spudger, pry the plastic plate off of the base of the computer.

Step 3 — Remove screws



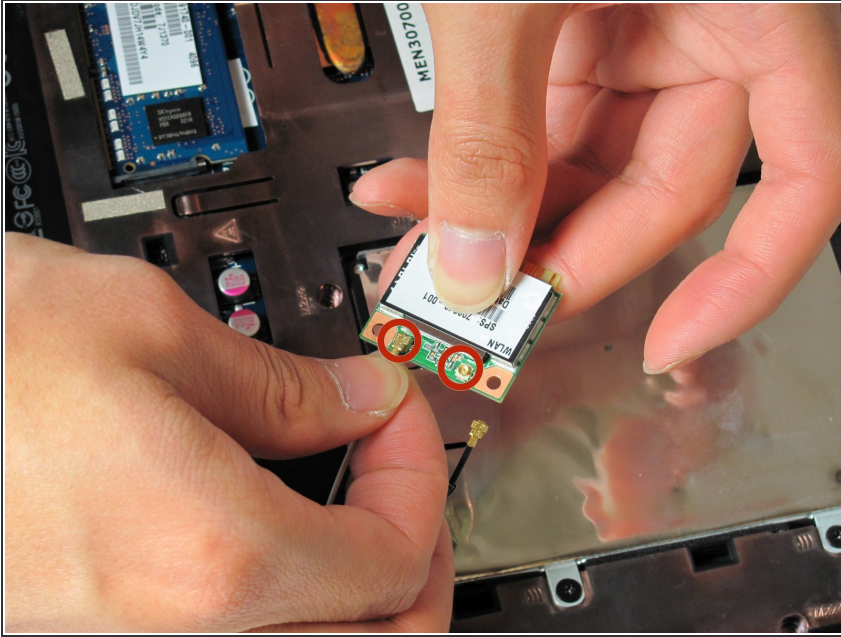
- Remove the screws from the WLAN card

Step 4 — Remove WLAN card



- Remove the card by sliding out of the slot.

Step 5 — Disconnect the cables



- Remove the cables from their connections by pulling them off. They should snap on and off.

To reassemble your device, follow these instructions in reverse order.