



Lenovo ThinkPad Edge E530 Wi-Fi Half Mini PCIe Card Replacement

Lenovo ThinkPad Edge E530 Wi-Fi Half Mini PCIe Card Replacement

Written By: ZFix



INTRODUCTION

How to replace the Wlan card on Lenovo ThinkPad Edge E530, E530c.

[video: <http://youtu.be/MM-G4OkeagQ>]



TOOLS:

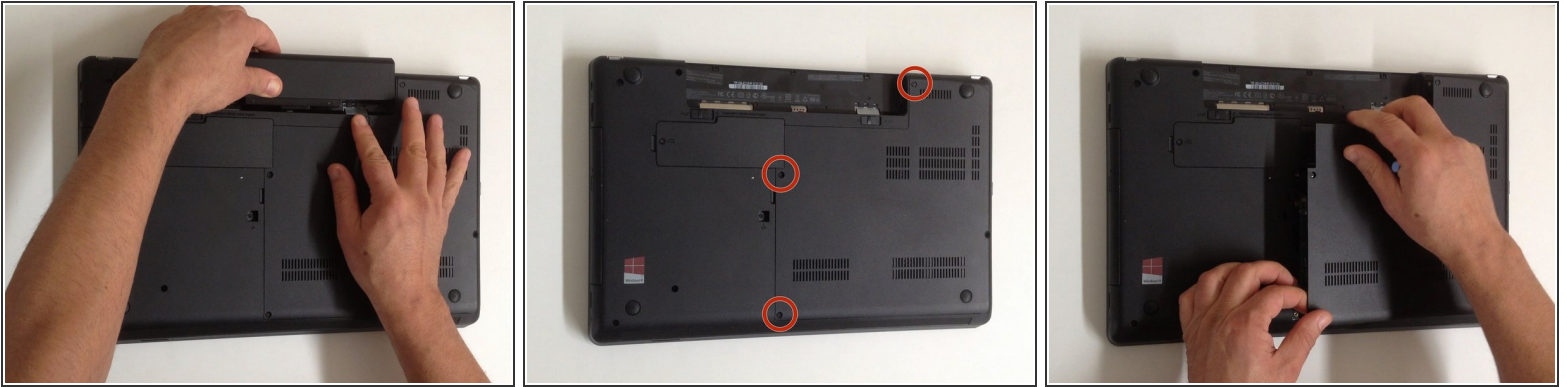
- [iFixit Opening Tools](#) (1)
- [Phillips #0 Screwdriver](#) (1)



PARTS:

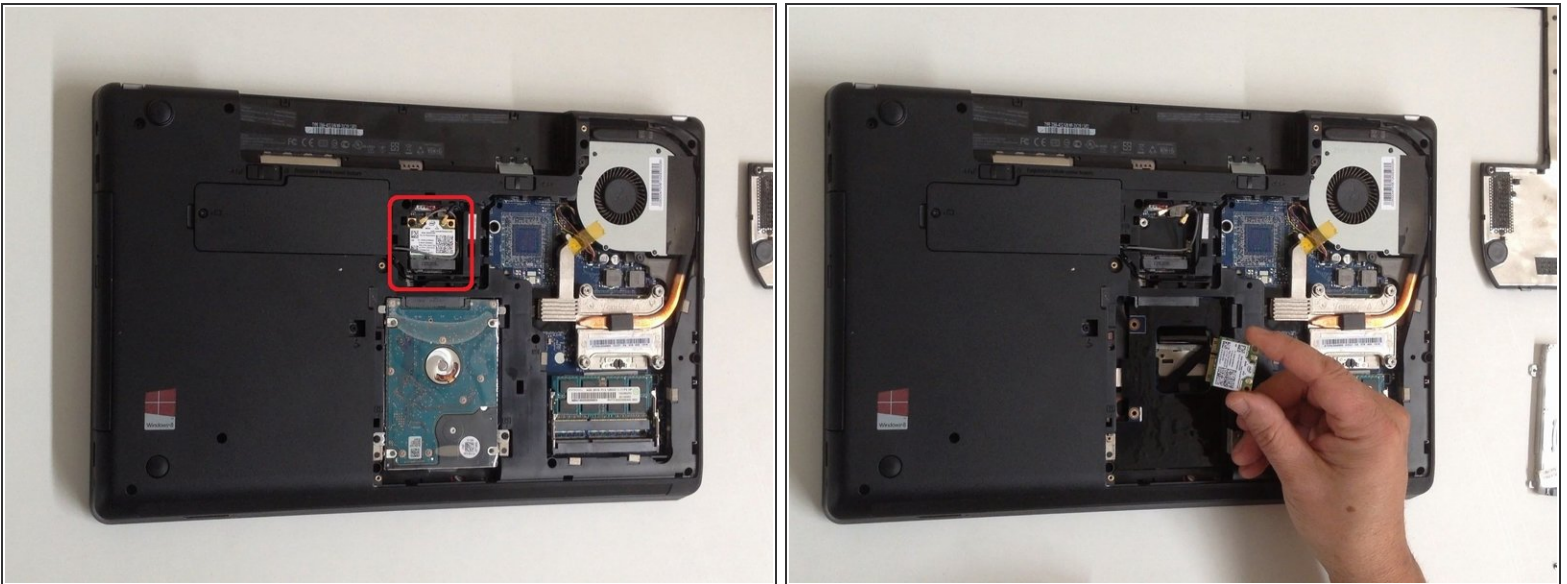
- [Wi-Fi Half Mini PCIe card](#) (1)

Step 1 — HDD Cover



- Switch-off the Laptop and remove the battery.
- The HDD/Memory Cover is held by 3x Phillips screws. Remove them.
- Remove the Cover.

Step 2 — Wi-Fi Half Mini PCIe Card



- The Wi-Fi card is held by one Phillips screw. Remove it and disconnect the two coaxial antenna cables (WLAN and Bluetooth).
- Remove the Wi-Fi card.

To reassemble your device, follow these instructions in reverse order.