



# 1994-2001 Acura Integra Front Speaker Replacement

Replacing door speakers

Written By: David Hodson



---

## INTRODUCTION

This guide shows how to remove the door speakers in the 1994-2001 Integra. For models with component speaker systems, this guide only shows how to remove the woofers.

The method to remove the driver's side door is shown. The passenger's side is almost exactly the same, except there is no connector for side-view mirror controls.

If you are installing after-market speakers, it is not necessary to splice any of the factory speaker wires. Using speaker adapter harnesses makes the task very simple, providing an easy plug-and-play installation.

---

### TOOLS:

- [Flathead Screwdriver](#) (1)
  - [Phillips #2 Screwdriver](#) (1)
  - [Flathead 3/32" or 2.5 mm Screwdriver](#) (1)
-

## Step 1 — Door Panel



- Remove the plastic Phillips screw towards the front of the door panel.
- ⓘ This screw is part of a two-piece securing mechanism. Do not apply force directly onto the screw head, because it will continue to slip into the plastic clip.
- Use a flathead screwdriver to remove the plastic clip that holds the screw.

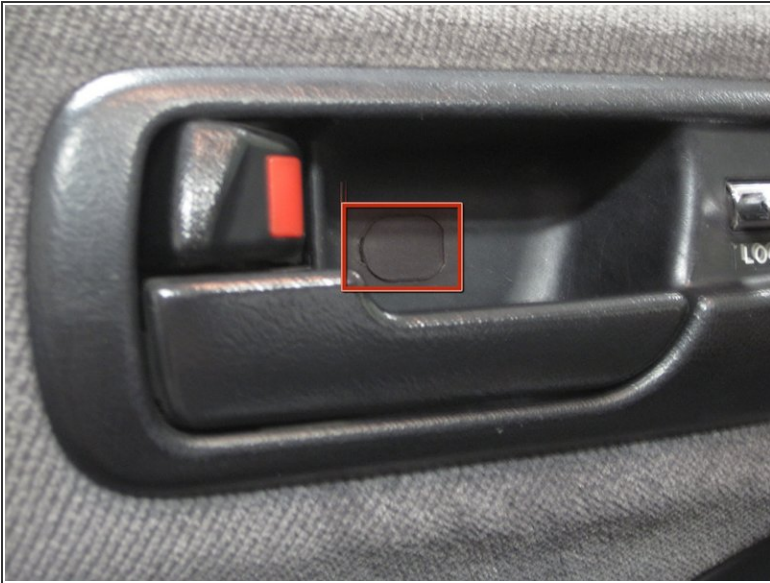
## Step 2



- Unscrew the Phillips screw in the bottom of the door panel cup.
- Lift the cup out of the the door panel.



## Step 3



- Insert a very thin flathead screwdriver blade into the small gap towards the rear of the car on the plastic screw cover near the door handle.
- Unscrew the Phillips screw underneath the screw cover.

## Step 4



- Remove the plastic cover at the base of the C-pillar by pulling it directly away from the window.
- i** The cover is held in place by a metal clip, so some force will be required to free it.
- i** In addition to the metal clip, two small tabs at the bottom of the cover keep it in place. Gently lift the corner of the door panel to remove the tabs from their respective holes in the door.

## Step 5



- Using firm pressure, pull the door panel away from the door. Start at the top right, and work down the side, across the bottom, and up the opposite side.
- i** Multiple clips hold the door panel in place. the door panel will jerk as each clip is freed from its position.

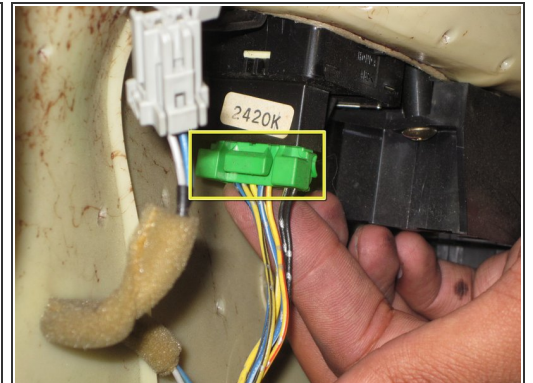
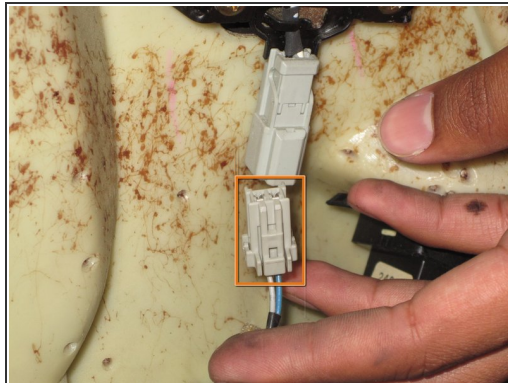
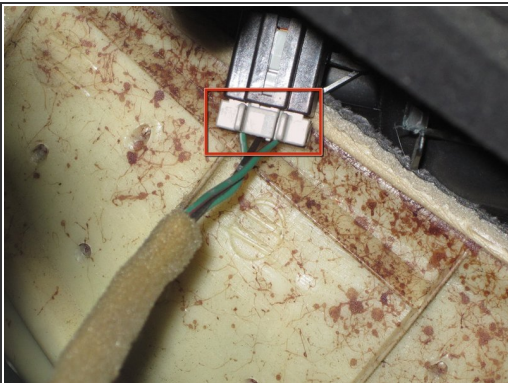


## Step 6



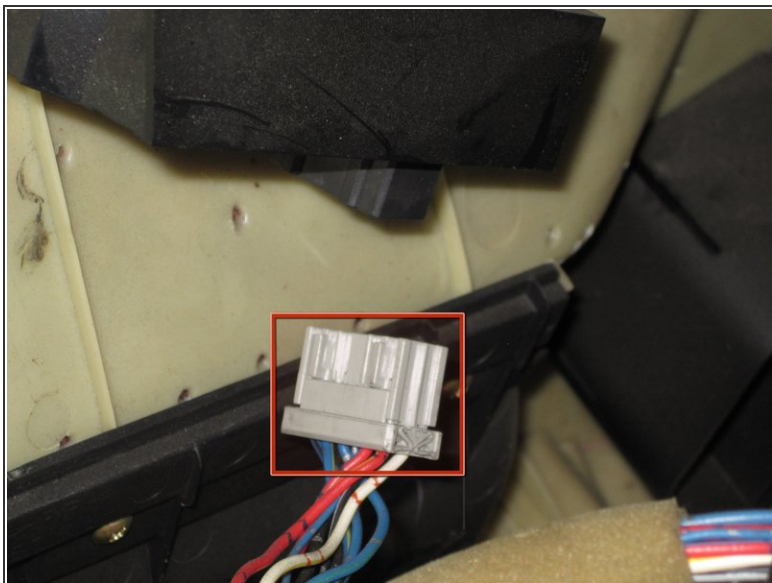
- Pull the bottom of the door panel away from the door, and lift the entire panel off the door.
- ⚠ Do not try to completely remove the door panel yet, as it is still attached by a number of electrical connectors.

## Step 7



- Push down on the small tab and pull the connector directly away from its socket to disconnect the power lock switch.
- Use the same method described above to remove the connector for the tweeter.
- Press the tab on the bottom of the larger green connector to disconnect the side-view mirror controls.

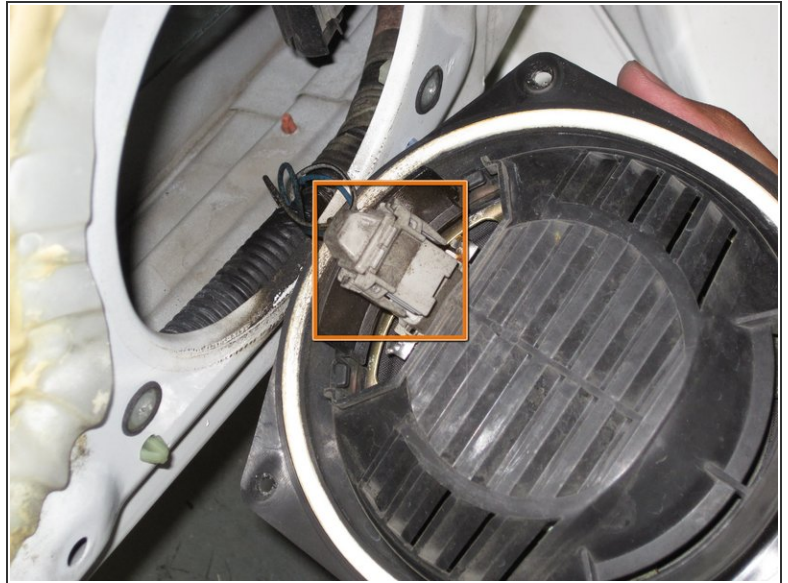
## Step 8



- Disconnect the power window connector.
- You may now remove the entire door panel.



## Step 9 — Front Speaker



- Remove the four Phillips screws that hold the speaker in the door.
- Lift the speaker out of the door. It is still connected by a single connector.
- Press down on the tabs on the speaker connector, and pull it directly away from the speaker.

To reassemble your device, follow these instructions in reverse order.