



Samsung Galaxy S5 Active Motherboard Replacement

The removal of the motherboard is a time...

Written By: Nils David Corrales Tovar



INTRODUCTION

The removal of the motherboard is a time consuming process. It involves the removal of most components from the phone. It also involves the use of a few tools such as a guitar pick, a heat gun, tweezers, a screwdriver, and plastic opening tools. You should be aware of the hazards and safety procedures of all tools before starting the process.

TOOLS:

[iFixit Opening Tool](#) (1)

[iFixit Opening Picks set of 6](#) (1)

[Heat Gun](#) (1)

[Phillips #0 Screwdriver](#) (1)

[Tweezers](#) (1)

Step 1 — Rear Case



- Insert your fingernail or plastic opening tool into the divot at the top of the rear-facing camera.
- Gently pry and twist the flexible rear cover off the back of the phone.

Step 2 — SIM Card



- Use your fingers to remove the SIM card

Step 3 — Battery



- Insert a fingernail or plastic opening tool into the recess in the bottom right corner of the battery and lift upward.
- Remove the battery away from the phone.

Step 4 — Display

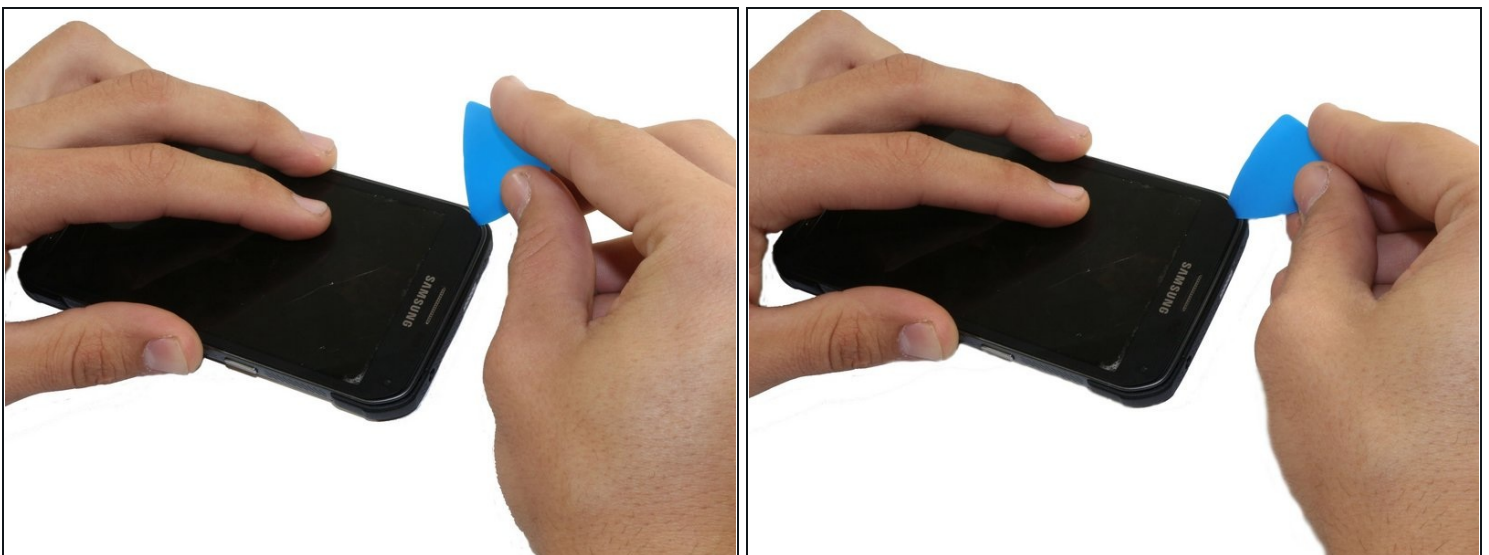


- ☑ Make sure the battery, the SIM card, and the MicroSD card have been removed. If these components are not removed, they may get damaged when the heat is applied.

⚠ In this step you'll be using a heat gun. The heat gun operates at high temperatures, and it may harm you or the device if not used appropriately. Please follow the heat gun safety procedures indicated in its manual to prevent any harm.

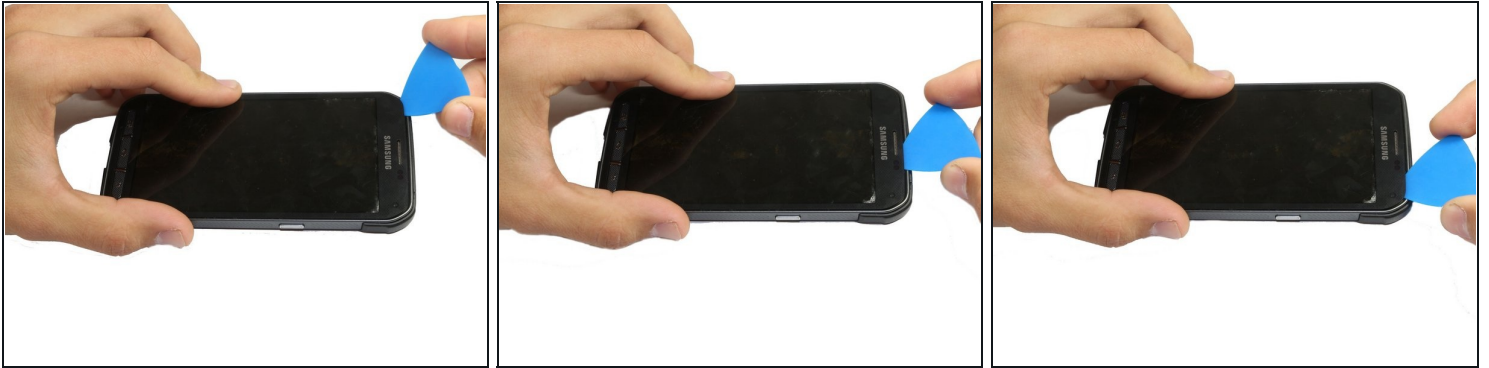
- Use a heat gun at an approximate distance of 2-3 inches from the phone to apply heat to the phone and loosen up the adhesive in the display.

Step 5



- Starting from the upper left corner, insert a guitar pick in between the display and the phone case.

Step 6



- Use the pick to pry the display by sliding the pick in the direction shown.

⚠ Make sure you pry the display around the edge of the phone. At the bottom of the screen there is a thin metallic strip that connects the display to the motherboard, and it can be easily damaged.

⚠ If any resistance is encountered, stop prying and reapply heat to continue prying.

Step 7



- Use the pick to pry the sides and lower part of the display by sliding the pick through the phone.

⚠ If any resistance is encountered, stop prying and reapply heat to continue prying.

Step 8



- Using the guitar pick, lift the screen slightly.
- ① You can remove the home button if desired.

Step 9

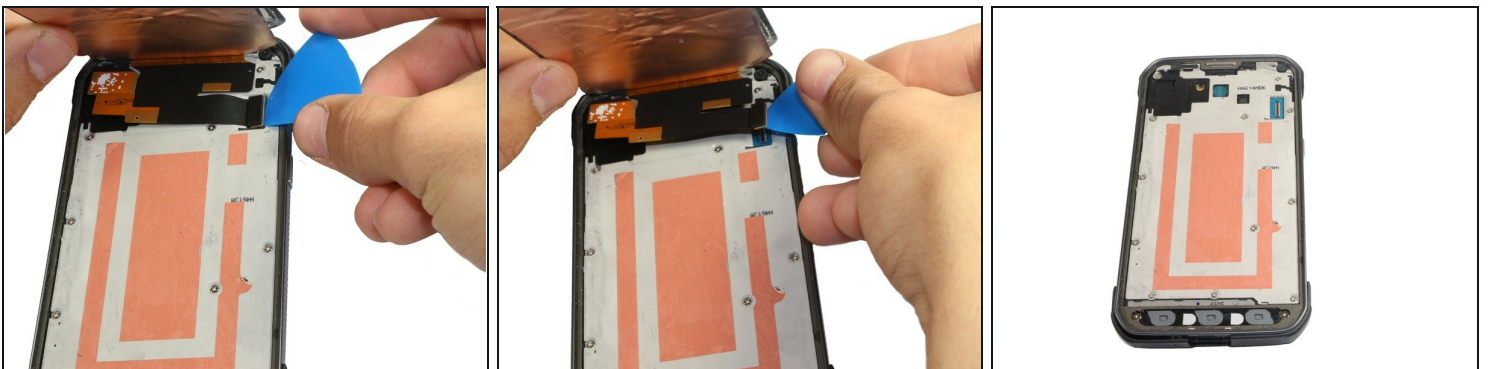


- Slightly lift, but do not remove, the upper end of display assembly.

⚠ Do not remove the front panel entirely. It is still attached by a connector.

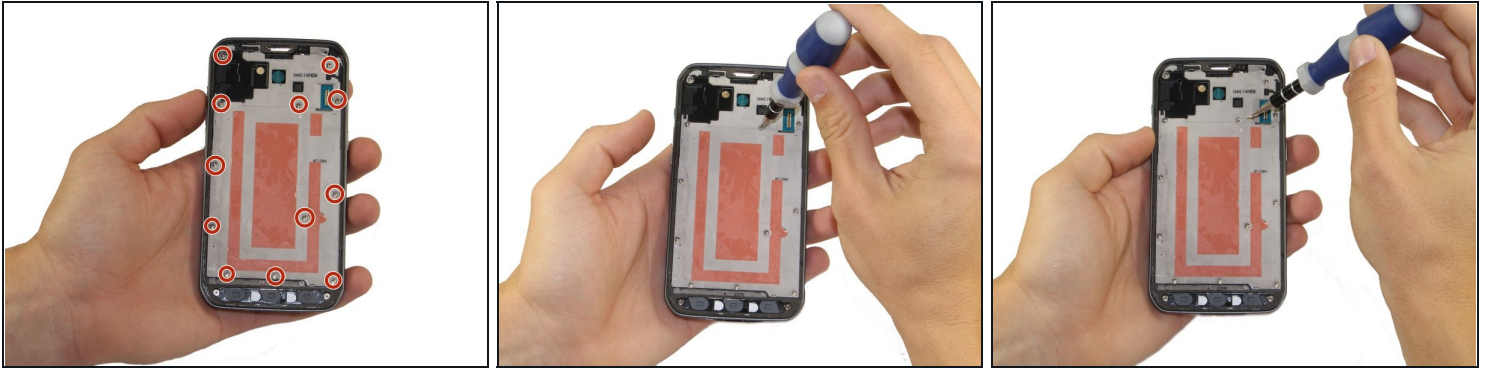
⚠ If you are reusing the home button flex cable, be careful not to sever the cable from the home button. Adhesive can cause the cable to rip apart from the home button. While the home button will still work, the fingerprint scanner will not.

Step 10



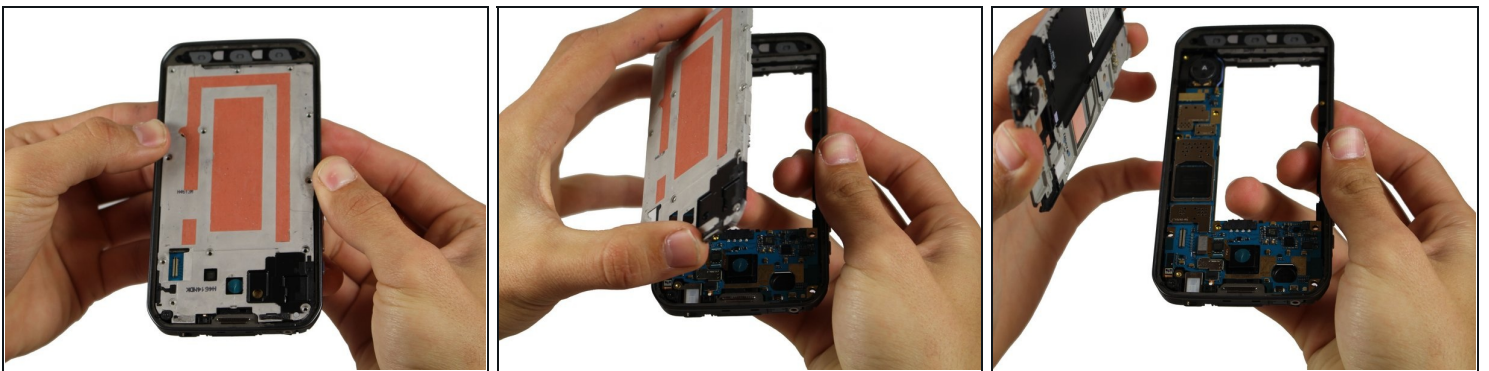
- Use the sharp tip of a guitar pick to lift the front panel assembly cable connector straight up off its socket on the motherboard.
- Safely remove the front panel assembly from phone.

Step 11 — Rear-Facing Camera



- Use a Phillips 0 screwdriver to remove all 12 Phillips #0 screws.

Step 12



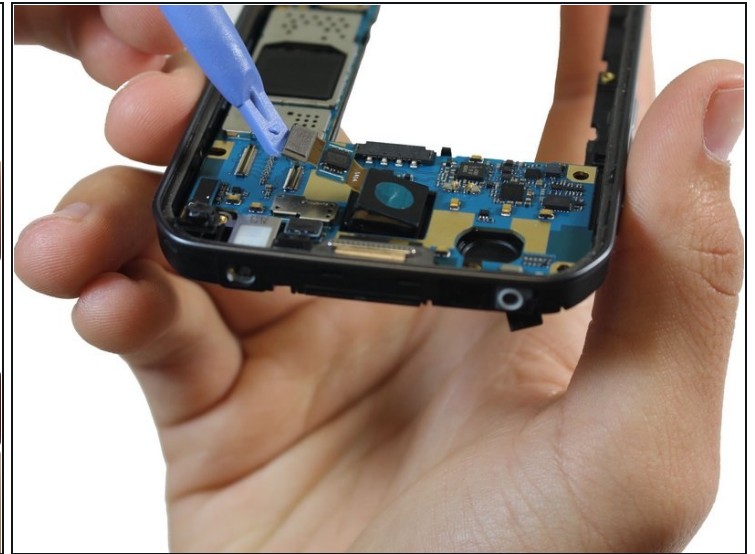
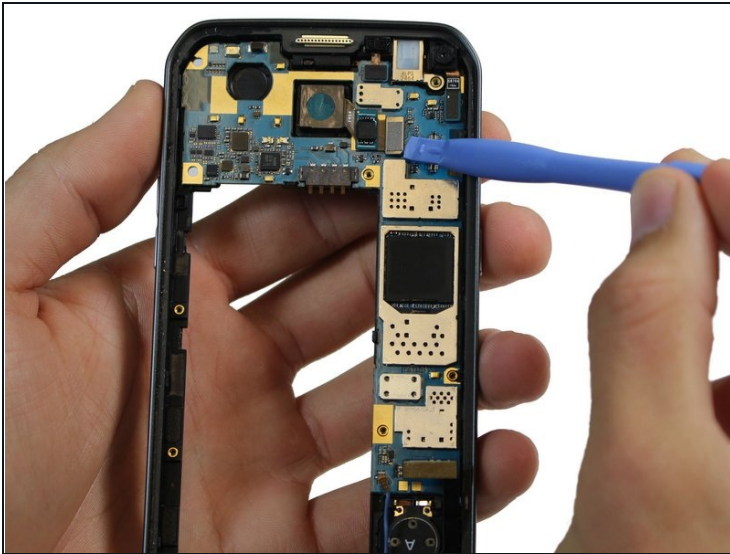
- Push upward from the back side your phone (where the battery should go) to pop out the large gray piece.

Step 13



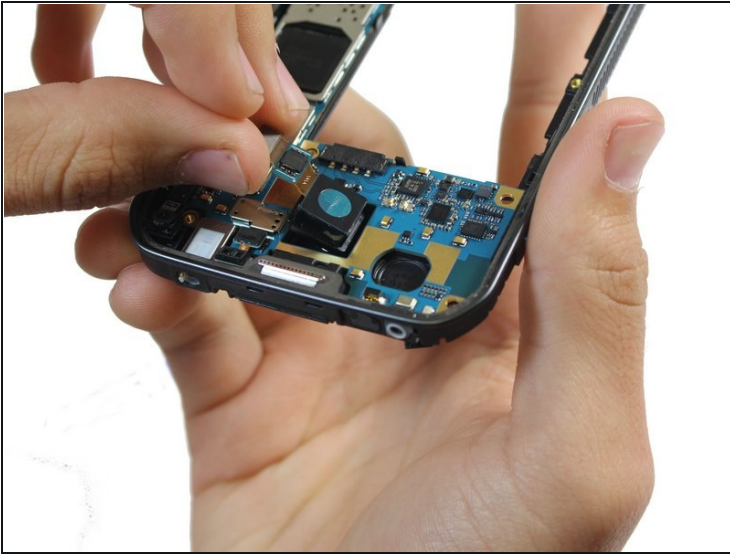
- You should now have two different pieces. To continue we will only use the piece with the motherboard (Shown on the right side of the picture).

Step 14



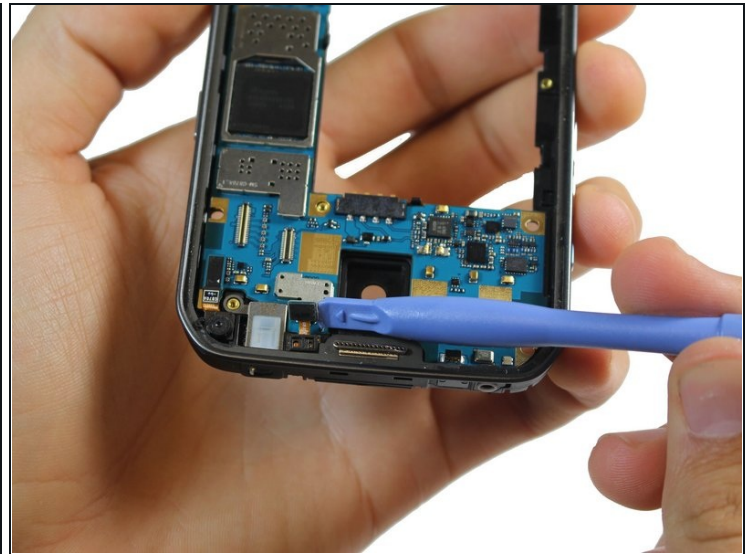
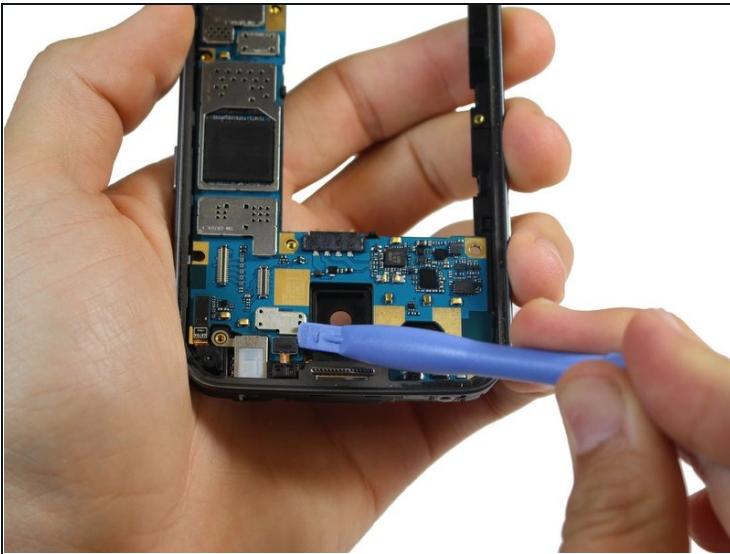
- Use your finger or a plastic opening tool to disconnect the rear-facing camera from the motherboard.

Step 15



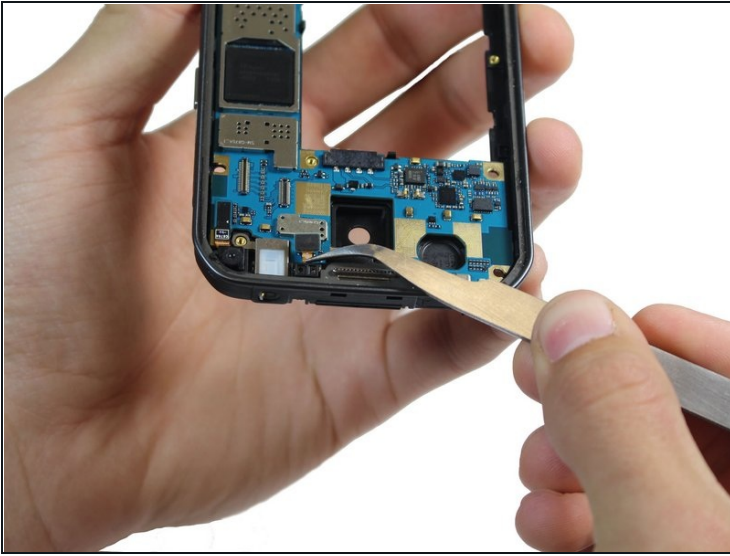
- Use your hands to gently remove the rear-facing camera from the motherboard.

Step 16 — Disconnect the Proximity/Light Sensor



- Use your finger or a plastic opening tool to disconnect the proximity/light sensor from the motherboard.

Step 17 — Remove the Proximity/Light Sensor



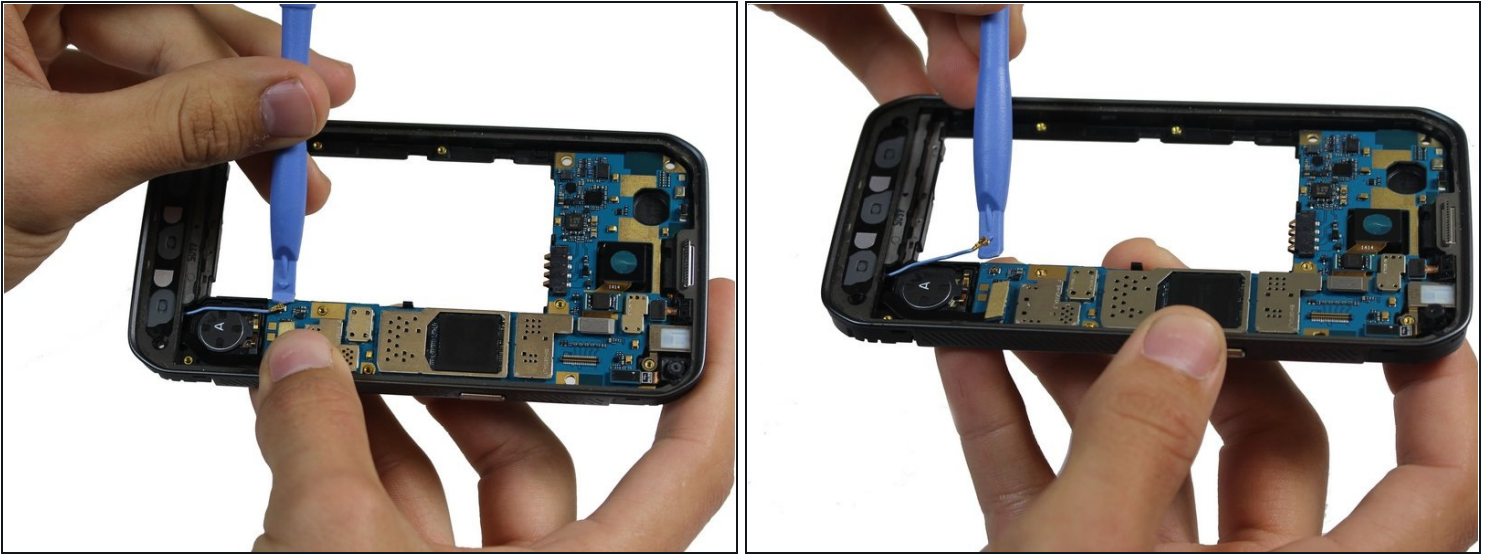
- Use [tweezers](#) to gently pull the proximity/light sensor out.

Step 18



- Use your finger or a plastic opening tool to disconnect the 3 button ribbon cable from the motherboard.

Step 19



- Use a plastic opening tool to disconnect the the blue wire shown in the picture.

Step 20



- After disconnecting the motherboard should come out easily.
- Motherboard should look as shown in the picture.

To reassemble your device, follow these instructions in reverse order.