



Asus V6800V Wireless Card Replacement

Use this guide to replace the Wi-Fi card in...

Written By: Steven



INTRODUCTION

Use this guide to replace the Wi-Fi card in your Asus V6800V laptop.

A Wi-Fi card is a module that can receive or send data via Wi-Fi. It can be used to connect to the internet, a wireless router, or a smart device. It can be installed internally or externally on a PC, depending on the type and compatibility.

Before using the guide, try connecting to a network on a different frequency band. Many consumer Wi-Fi routers broadcast at two different network frequency bands: 2.4 GHz and 5 GHz. These will appear as separate networks in the list of available Wi-Fi networks. If your list of available Wi-Fi networks includes both a 2.4 GHz network and a 5 GHz network, try connecting to the other network. Also, try running network troubleshooting.

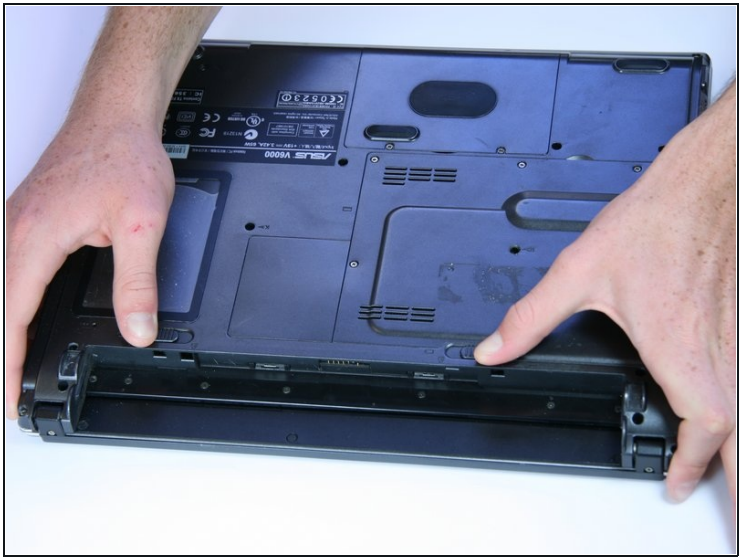
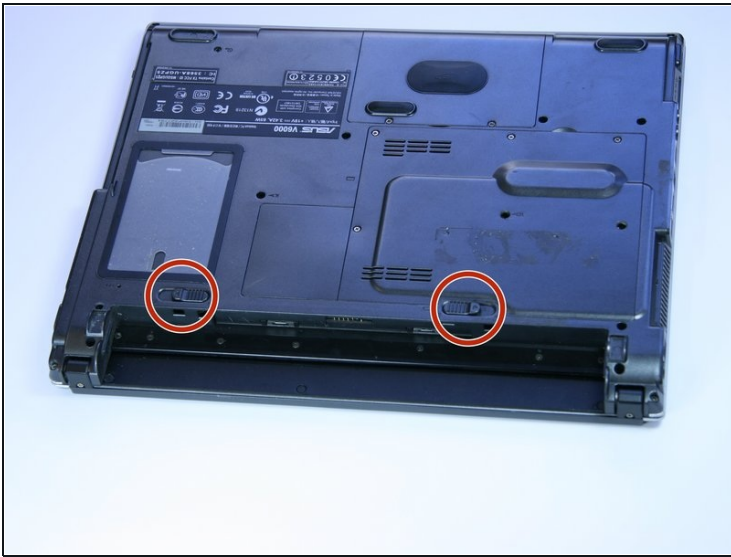
If the Wi-Fi in your laptop still isn't able to connect to Wi-Fi networks, you need to replace it to let that happen. To do that you need to remove the charger and battery from the computer before beginning. For removing the battery, follow [this guide](#).

TOOLS:

[Phillips #0 Screwdriver](#) (1)

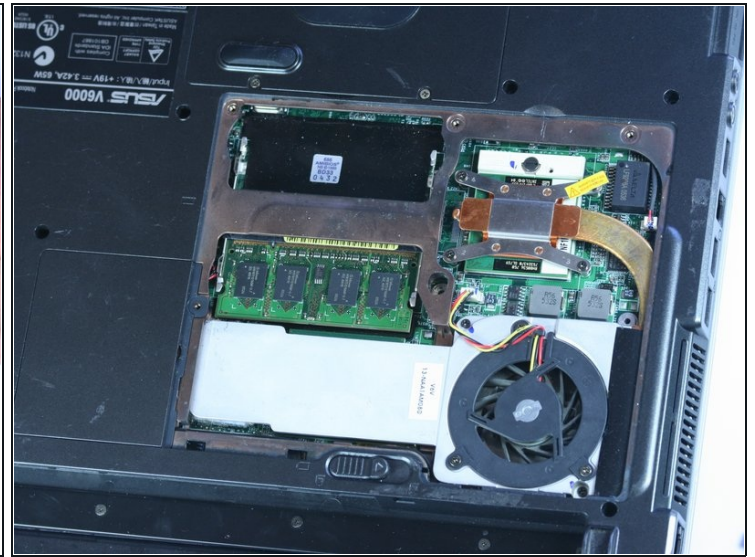
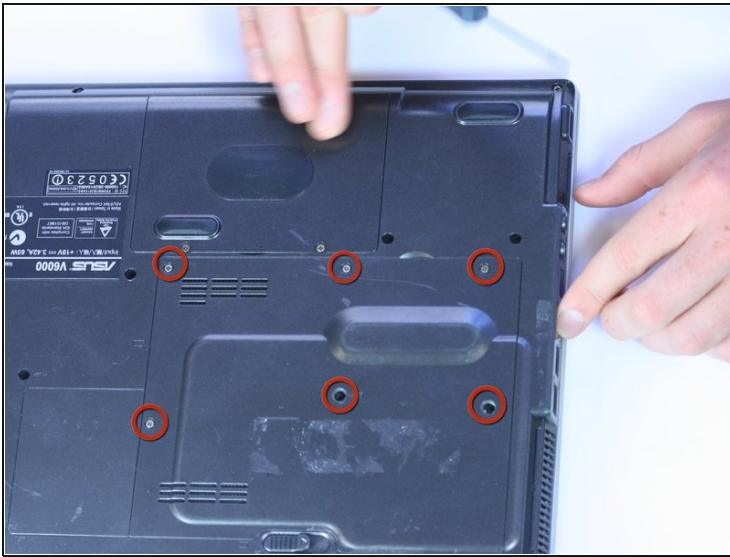
[iFixit Opening Tool](#) (1)

Step 1 — Battery



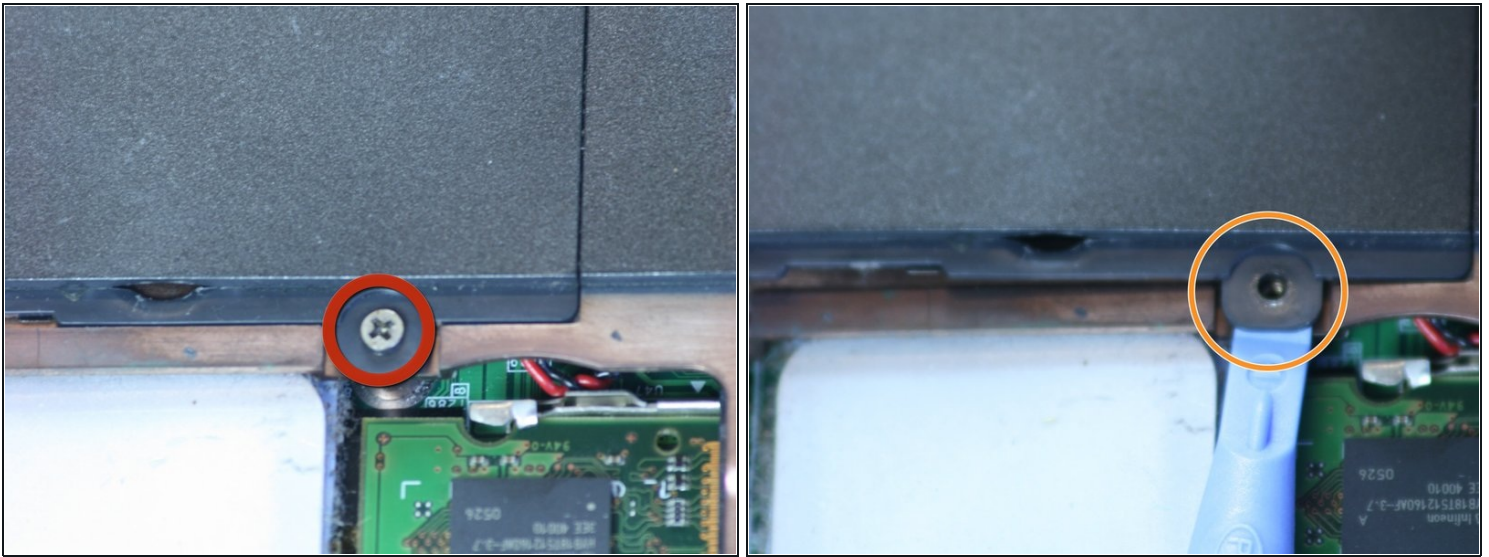
- Place the computer upside down.
 - Using your thumbs, slide both latches away from each other (towards the outside).
 - Push the battery out with your fingers.
- ⓘ The actual battery is not pictured.

Step 2 — Wireless Card



- Remove the six screws highlighted on the picture.
- Once the screws are removed, pry open the panel with the pry tool.
- It should now look like this.

Step 3



- After removing that panel, locate the screw on the right as highlighted.
- Remove that screw.
- Pry open the side panel with the small prying tool as shown.
- That panel should pop off and the wireless card will now be easily visible.

Step 4



- Place the small prying tool underneath the gold connector and gently apply pressure straight up until it pops off.
- Repeat for the other one.
- Place the gold connectors aside.

Step 5



- Locate the tabs that are holding the wireless card in place. These are highlighted in picture.
- Place one finger on each tab and press each to the side away from the wireless card as shown.
- The wireless card should pop up as shown. Pull up more with fingers to get more clearance.

Step 6



- To remove the wireless card, pull the card directly out.
- It should come out with just a little bit of pressure.
- It should look as shown when removed.

To reassemble your device, follow these instructions in reverse order.