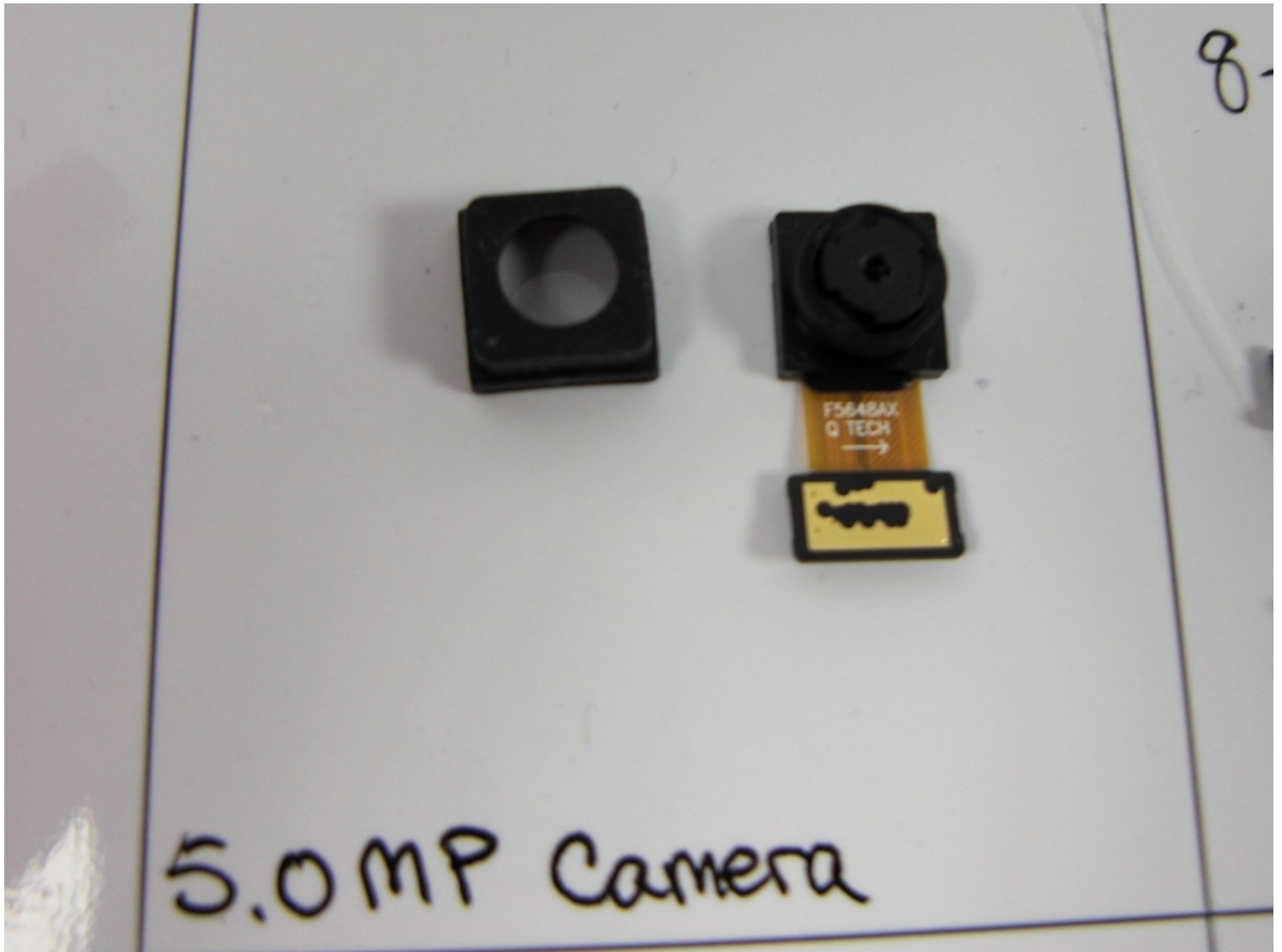




Alcatel OneTouch Evolve Camera Replacement

In the age of evolving cell phone technology,...

Written By: Melissa Pijoan



INTRODUCTION

In the age of evolving cell phone technology, the cameras each has is a huge factor point when buying the phone. These cameras are becoming so advanced, they are replacing the need for handheld digital cameras. Because of this, owners rely greatly on a functioning camera in their phones. This guide will provide users with information needed access and replace the camera in an Alcatel OneTouch Evolve in the case of a malfunctioning, damaged or dirty camera.

TOOLS:

[iFixit Opening Tool](#) (1)

[Phillips #0 Screwdriver](#) (1)

[Tweezers](#) (1)

Step 1 — Locate the access tab



- This will be an opening with enough space to insert the flat head of the plastic opening tool.
- It will be located on the bottom right of the phone

Step 2 — Place the flat head end of the pry tool into the tab



- Rotate the pry tool 90 degrees until the panel lifts up.
- With your thumb nail, lift the rest of the panel up around the perimeter of the phone.

Step 3 — Identify the Battery



- This is the battery for the Alcatel One Touch Evolve. Look for this component when the back panel has been removed.

Step 4 — Removing the battery



- Place finger in the tab on the top right corner of the battery indicated by a black arrow. With slight pressure, push battery down and out of the slot until the battery is removed

Step 5 — Locate Screws Holding the Secondary Panel in Place



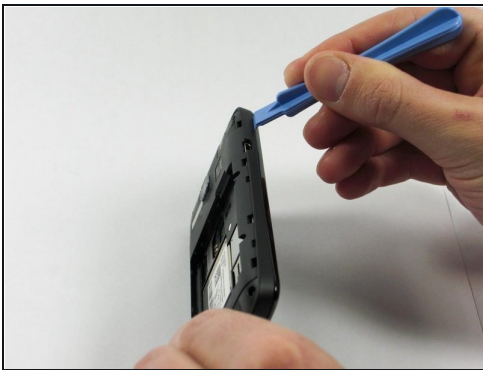
- There will be eight 4.5mm screws that fit your Phillips head PH00 screwdriver notated by the red circles in the image.

Step 6 — Remove Screws



- Unscrew each screw, counter-clockwise (left), until each one has been removed.
- If necessary, use [tweezers](#) to fully remove the screws from the device.
- ☑ Remove battery before lifting off the panel.

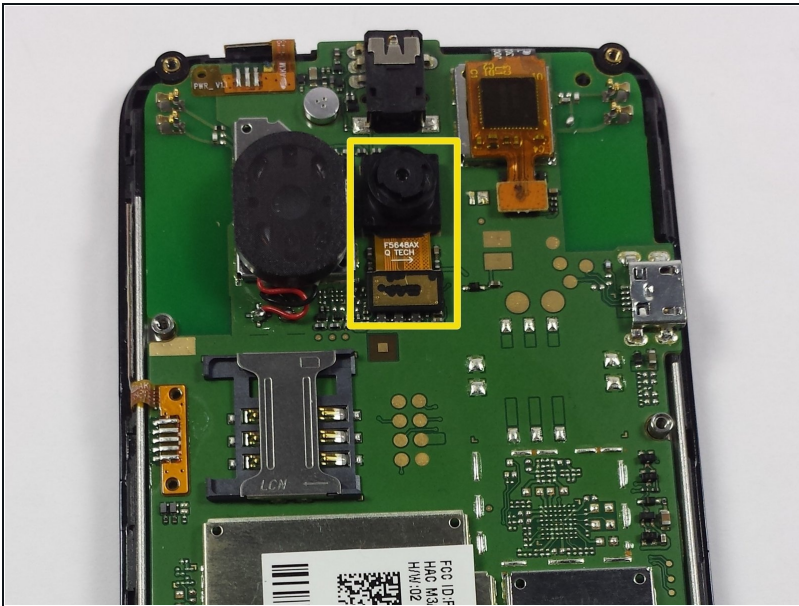
Step 7 — Prying the Panel Off



- Access the small pry tool in the tool kit
- Place flat head in the crease between the phone and panel where the matte finish meets the shiny finish of the front of the phone.
- Rotate the pry tool 90 degrees until part of the panel lifts up
- All areas need to be fully risen off before the panel can be removed.

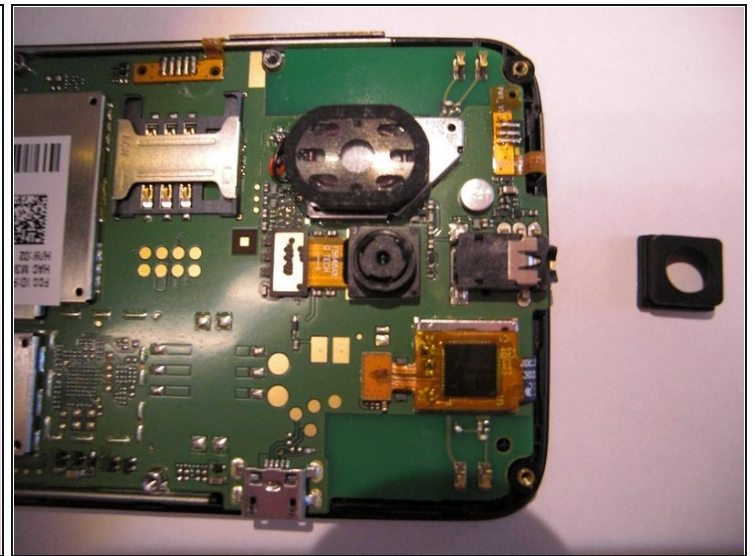
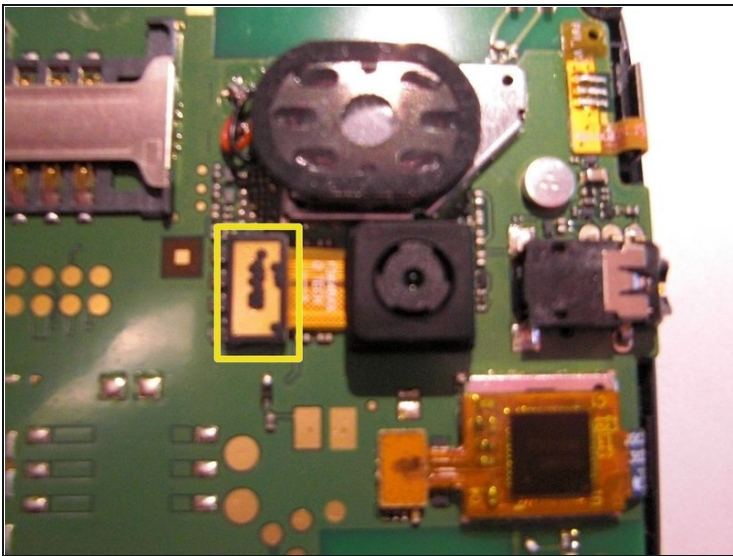
⚠ Do not use the opening tool to pry open the device near the power button or near the volume button.

Step 8 — Locate the Camera on the Device



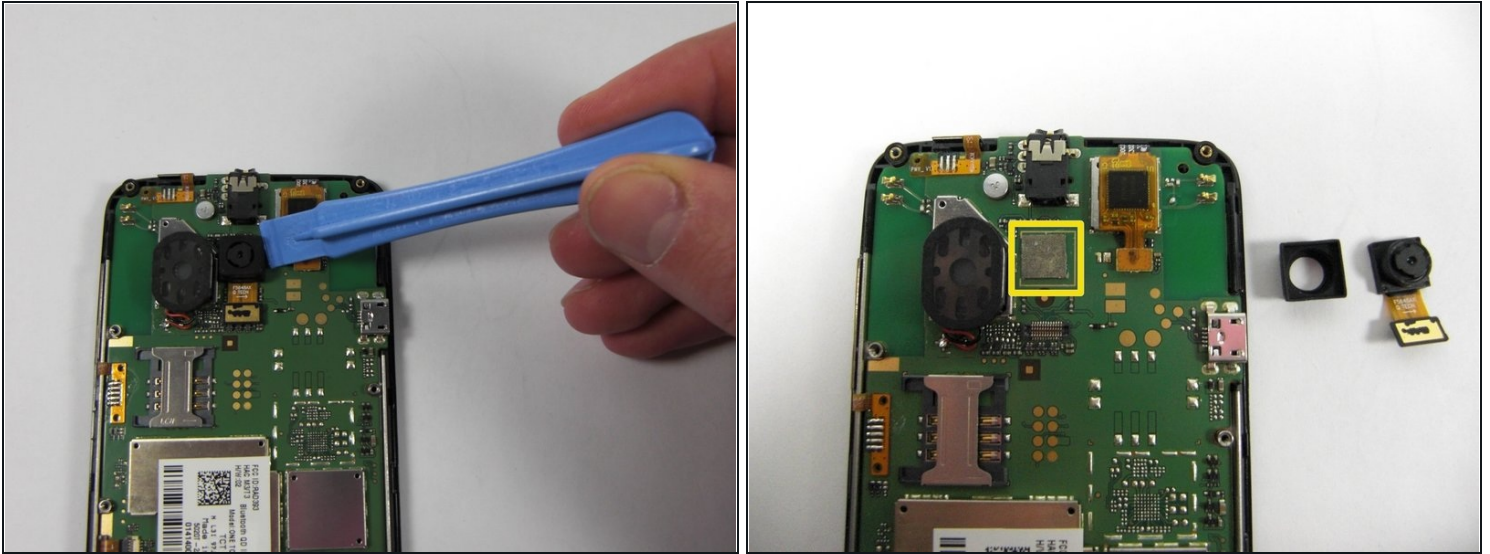
- See yellow square for the location of the camera on the mother board.

Step 9 — Unclip the connection to the motherboard.



- By gently lifting the bottom rectangular piece of the camera component upwards and away from the device, the connection will come free.
- Remove the rubber casing from the camera, this piece is simply resting over the camera and can easily be removed.

Step 10 — Separate the camera from the glue patch



- Place your plastic opening tool underneath the bottom of the camera and rotate the tool to lift the camera. This will take a slight amount of force.
- You will start to see the silver sticky patch between the camera and the mother board - leave this on the mother board.
- Keep separating the camera from the sticky patch until completely removed.
- To replace camera, use the yellow lines on the motherboard as your guide.

To reassemble your device, follow these instructions in reverse order.