



ZTE Awe Motherboard Replacement

Technical difficulties? Your motherboard may be to blame.

Written By: Jennifer DeMeo



INTRODUCTION

Caution! Ribbons should NOT be torn when disassembling the motherboard from the phone! Use tweezers to GENTLY wiggle the ribbons back and forth to loosen and separate ribbons from the motherboard and phone.



TOOLS:

- [Tweezers](#) (1)
 - [Phillips #00 Screwdriver](#) (1)
 - [iFixit Opening Tools](#) (1)
 - [Essential Electronics Toolkit](#) (1)
-

Step 1 — Remove the back cover



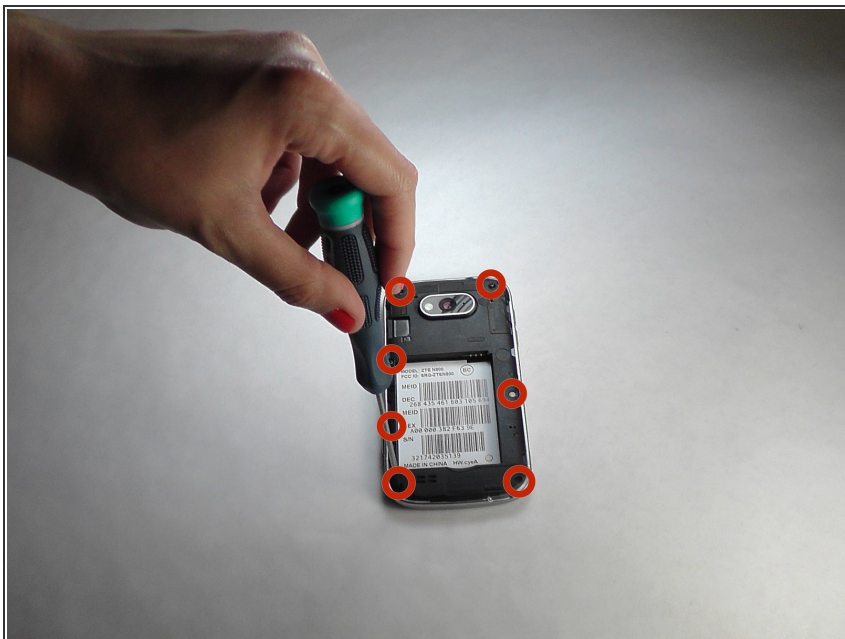
- Remove the back cover of the phone to expose the phone's mid-frame.

Step 2 — Remove battery



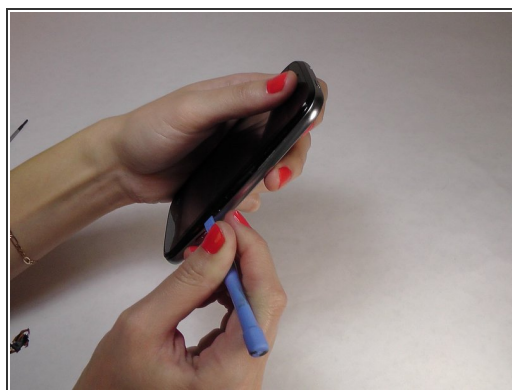
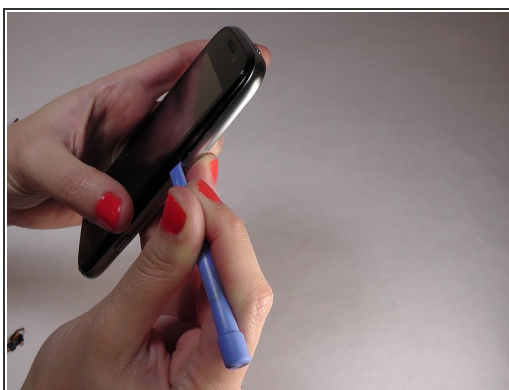
- Pry the battery up and out of the phone.

Step 3 — Detach the mid frame



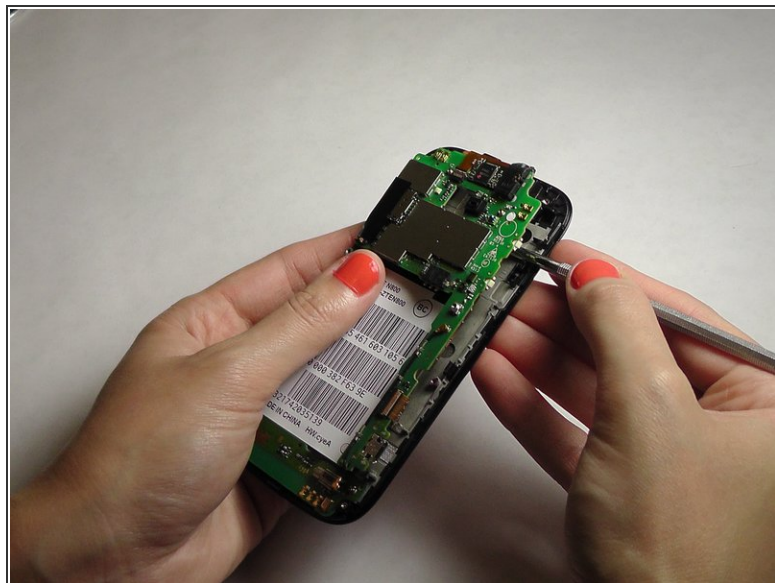
- Use the Phillips Head 00 screw driver to unscrew the seven 0.1mm screws from the phone's mid frame.

Step 4 — Separate the mid frame and the digitizer



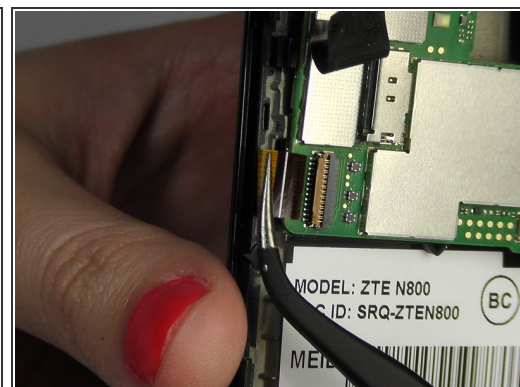
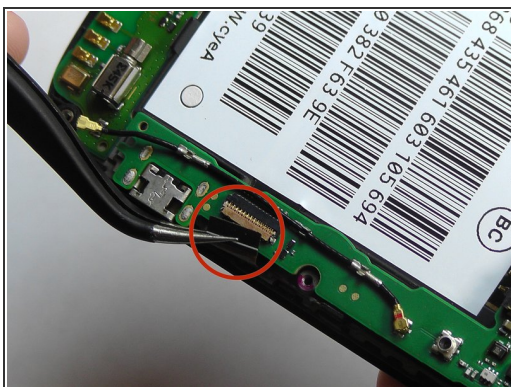
- Wedge the flat end of the spudger between the mid frame and the digitizer.

Step 5 — Expose the motherboard



- Gently pry the mid frame away from the rest of the phone to expose the motherboard.

Step 6 — Remove the ribbon wires



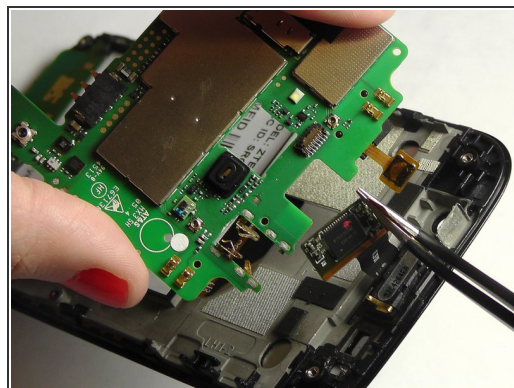
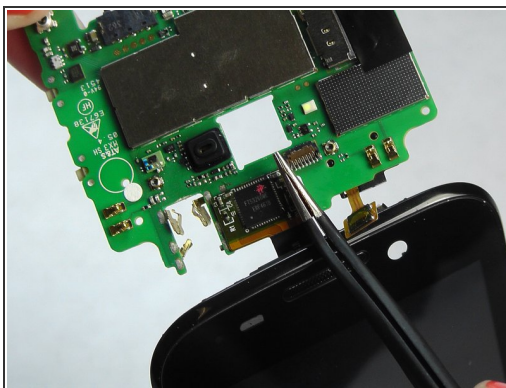
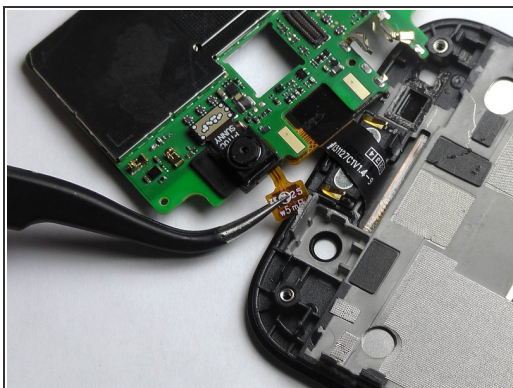
- Use the tweezers to remove the four ribbon wires on the sides of the device.

Step 7 — Orient the motherboard



- Orient the motherboard to expose the mid frame.

Step 8 — Remove the connector



- Remove the connector to free the motherboard from the screen.

To reassemble your device, follow these instructions in reverse order.