



# Viewsonic gTablet UPC300-2.2 Front Facing Camera Replacement

Replace damaged/malfunctioning front-facing camera.

Written By: Cristian

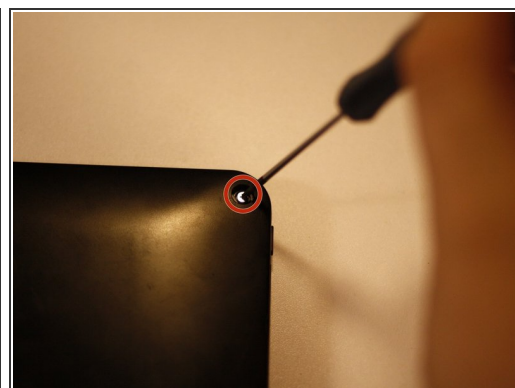
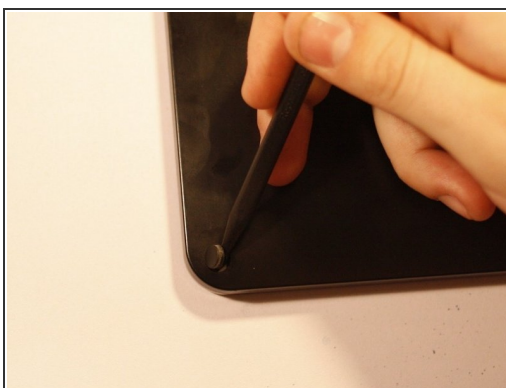
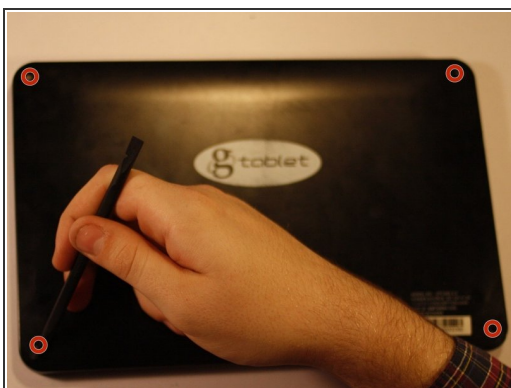




## TOOLS:

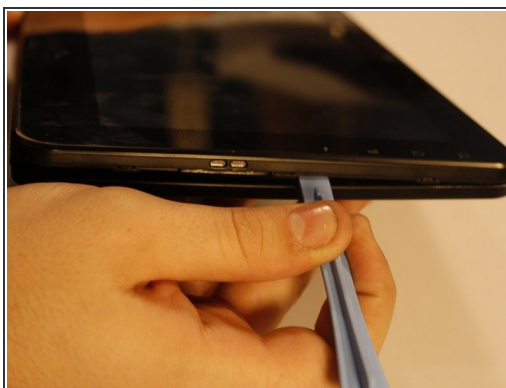
- [Spudger](#) (1)
- [Tweezers](#) (1)
- [iFixit Opening Tools](#) (1)
- [Phillips #00 Screwdriver](#) (1)

## Step 1 — Back Cover Screws



- Using your spudger or metal tweezers, work the rubber screw covers out of their sockets, found on each of the four corners of the back cover.
- ⓘ Have patience! These are held in with glue and can take time and a few attempts to remove.
- Using a PH00 screwdriver, remove the 5.8mm screws found beneath each rubber cover (4 total).

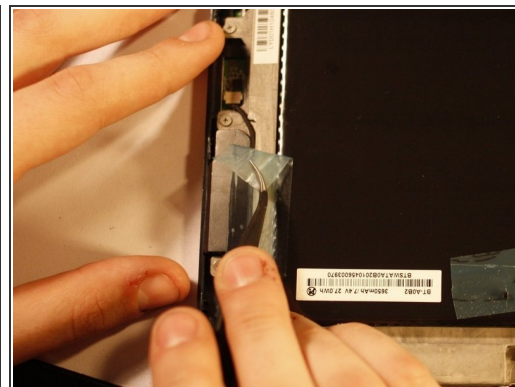
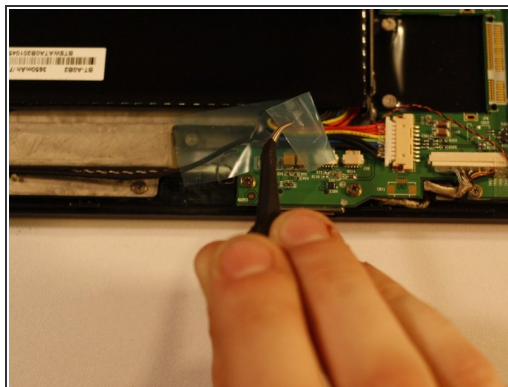
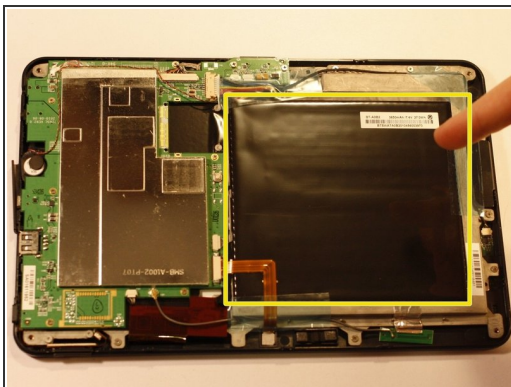
## Step 2 — Pry Off Back Cover



- Using the flat end of your prying tool, work the back cover away from the rest of the gTablet.
- Starting near the charging port, work in one direction around the perimeter of the device.
- ⚠ Do not insert prying tool deeper than is necessary to separate back cover. You may damage other components!
- Lift off back cover to reveal the interior of the device.

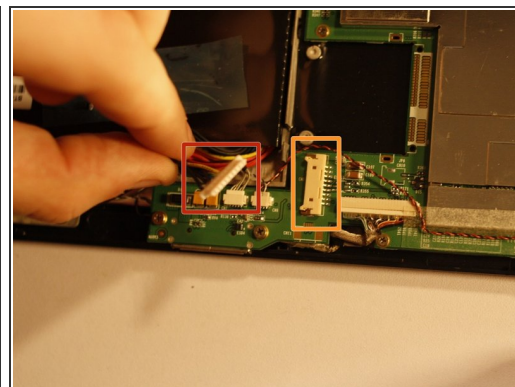
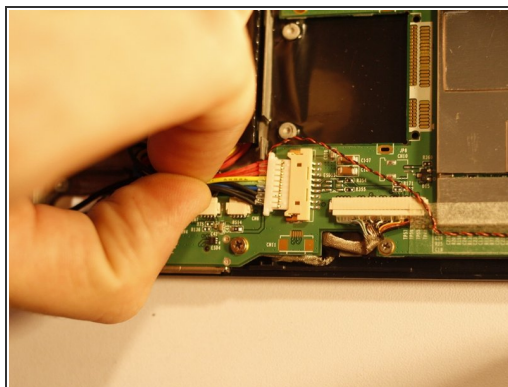
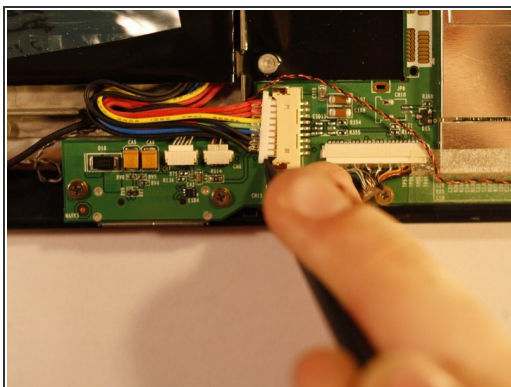


### Step 3 — Identify Battery & Prepare for Removal



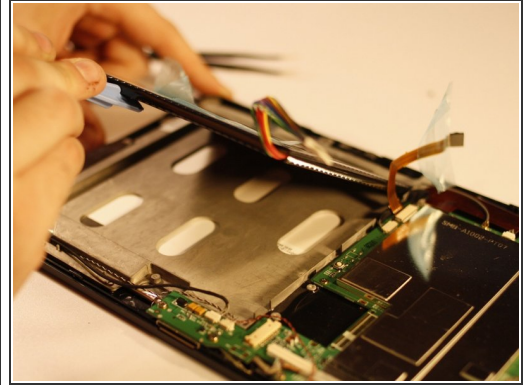
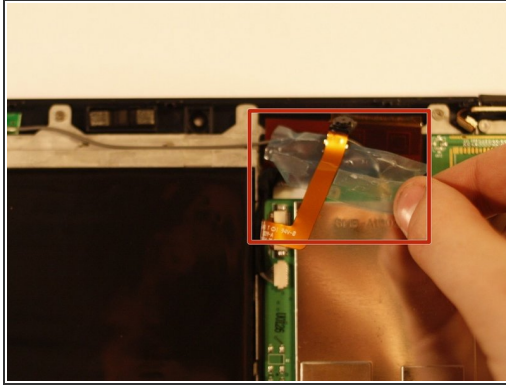
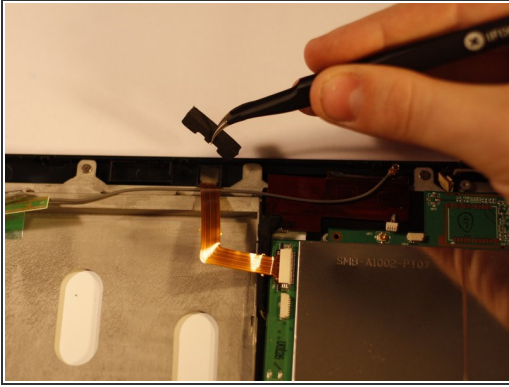
- The battery is the large black square that dominates much of the device interior.
- There is tape holding several wires in place. This must be removed before the battery can be removed. Peel it gently; you will want to use it later.

### Step 4 — Disconnect Battery Power Cable



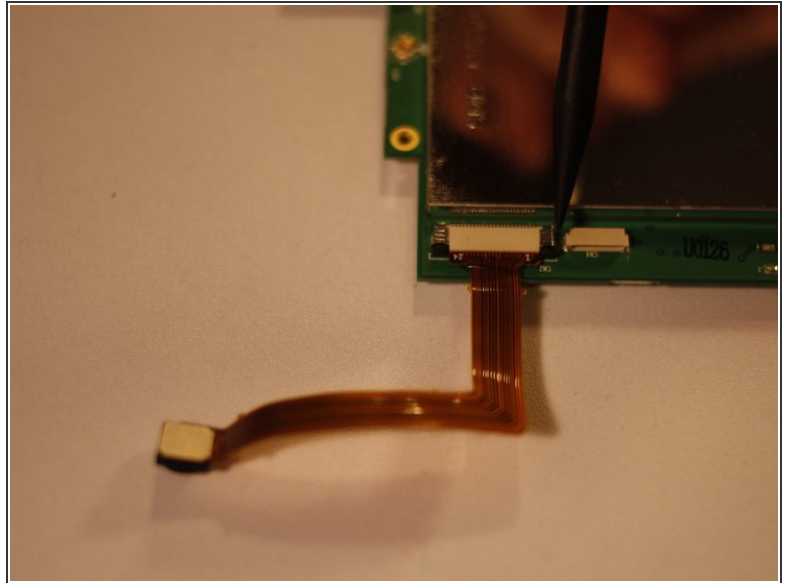
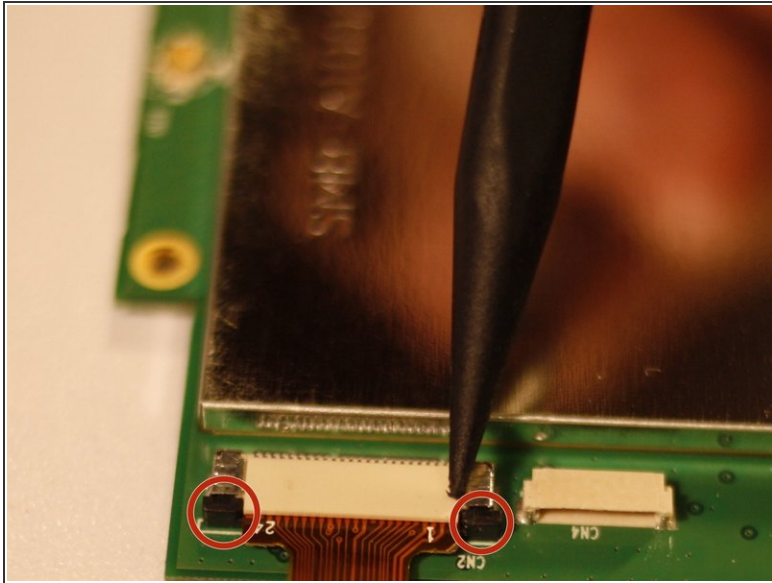
- Using a PLASTIC tool of your choice, push both ends of the power cable connector, one at a time, away from its housing. This will slowly wiggle the connector out of place.
- ① The white connector (red markup) comes off while the off white connector (orange markup) stays on the motherboard.

## Step 5 — Move Front-Facing Camera & Remove Battery



- Using tweezers, remove the protective foam backing arch from the front-facing camera.
- Pull the camera out of its housing and move it aside.
- ⓘ Be sure to move any wires out of the way before attempting to move the battery, as these are still connected and shouldn't be stressed!
- Gently lift the battery up and away from the rest of the device and set it aside.

## Step 6 — Remove & Replace Front Facing Camera



- The front-facing camera is held in by a tricky connector. It cannot be removed unless the two black tabs shown here are lifted. Once the tabs are lifted, you may gently pull the connector out with tweezers.
  - Replace the camera by reversing these steps.
- ☒ Don't forget to push the black tabs back down after connecting a replacement camera!

To reassemble your device, follow these instructions in reverse order.