



iRobot Looj 120 Controller Buttons Replacement

If the buttons on your iRobot Looj 120 Controller are unresponsive, stuck, or broken, use this guide to replace the broken buttons.

Written By: Lucas Otto



INTRODUCTION

If your iRobot Looj 120 Controller is not working or the buttons are stuck or broken, use this guide to replace them.

If the buttons seem to be working and the device still doesn't work, the circuit board might have to be replaced. The circuit board uses the buttons as inputs to control the device. If the circuit board is broken, a replacement is necessary.

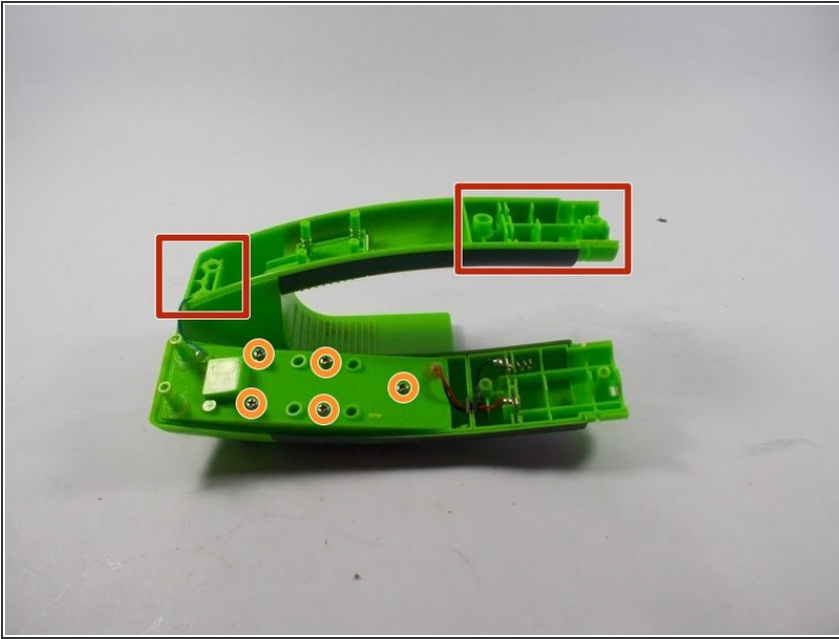
Before continuing, make sure the device is powered off and disconnected from any power source.



TOOLS:

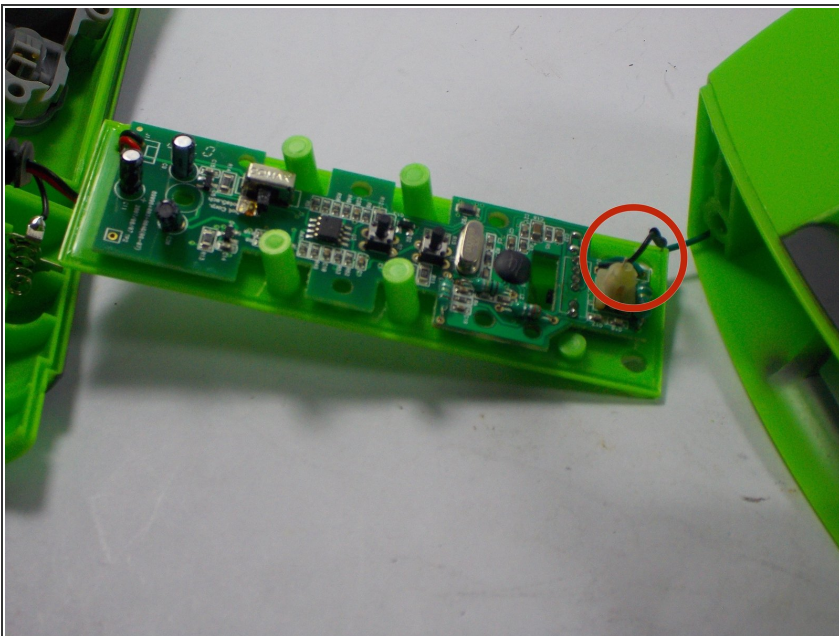
- [Phillips #0 Screwdriver](#) (1)
 - [6-in-1 Screwdriver](#) (1)
-

Step 1 — Removing Screws



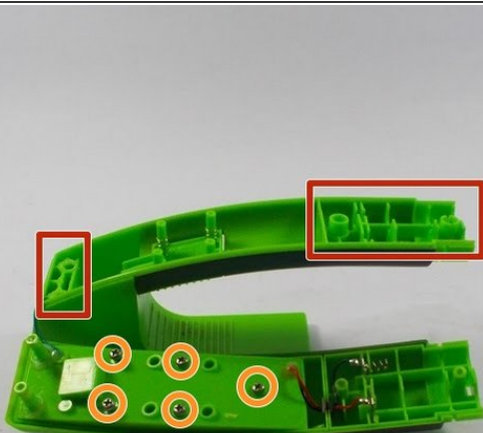
- Remove the four exterior screws located under controller and on the handle.
- Remove the five screws shown, and then carefully remove top plate. Electrical components are attached to top plate.

Step 2 — Locate Circuitry



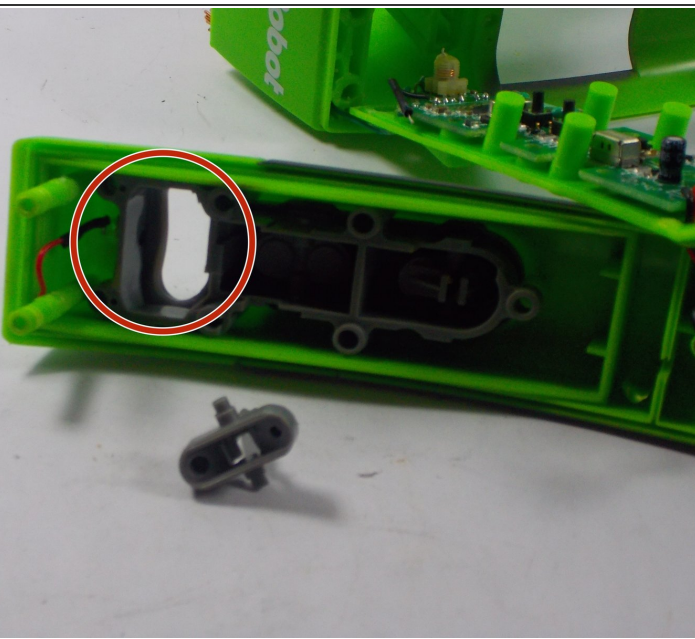
- Disconnect circuit board from power leads, and install new circuit board.

Step 3 — Remove Exterior Screws



- Remove the four exterior screws to gain access to inner components. These screws are located on the bottom of the controller and on the handle.
- Remove the five interior screws to access the buttons.

Step 4 — Accessing the Buttons



- Remove top plate carefully so that none of the electrical components are damaged.
- Remove the broken button and insert the new button into the mounting hole.

To reassemble your device, follow these instructions in reverse order.