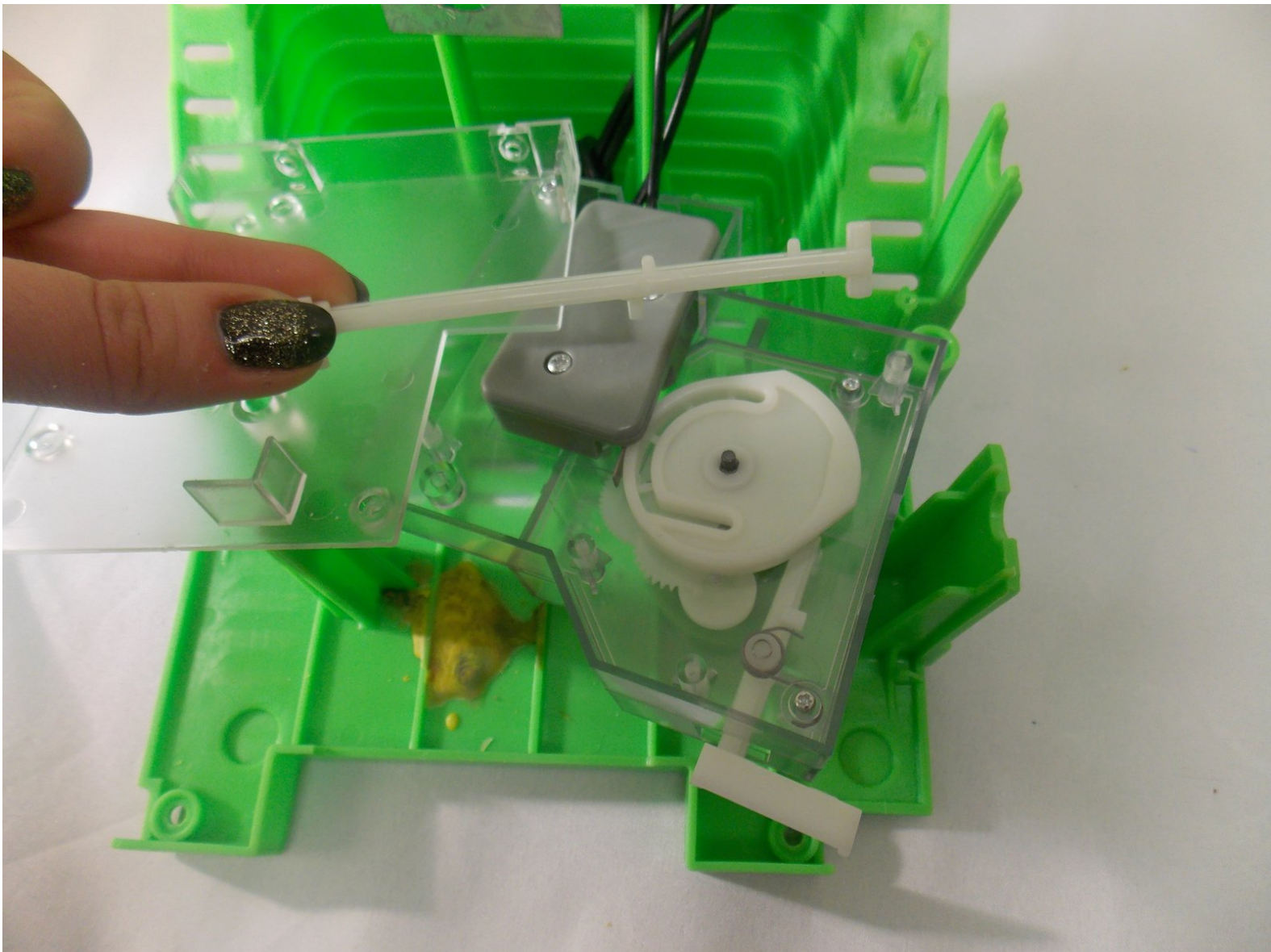




Crayola Crayon Maker White Plastic Arm Replacement

These step-by-step instructions will help you replace the position of the White Plastic Arm inside the Control Box of the Crayola Crayon Maker.

Written By: Melissa



INTRODUCTION

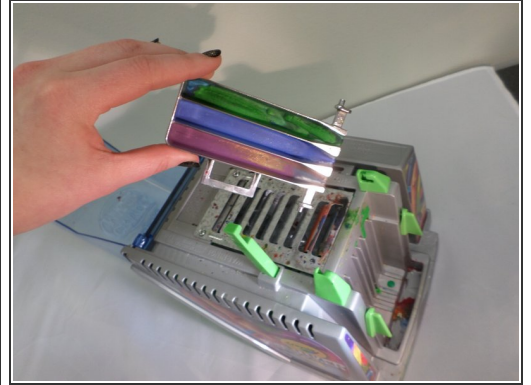
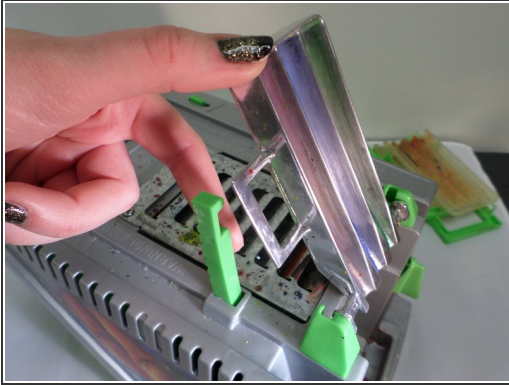
If the crayon maker is not closing properly, check the position of the plastic arm. Adjust the plastic arm if it is out of place. Replace the arm if it is broken.



TOOLS:

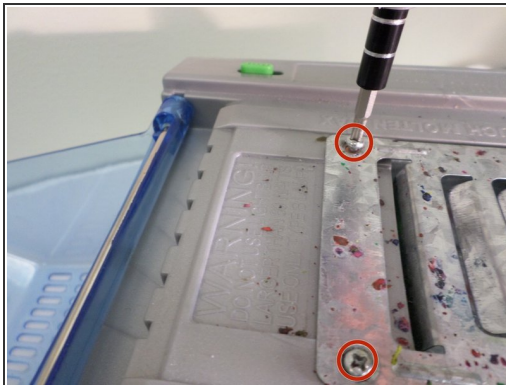
- [Phillips #2 Screwdriver](#) (1)
 - [Phillips #00 Screwdriver](#) (1)
-

Step 1 — Take out the melting tray that is out of place.



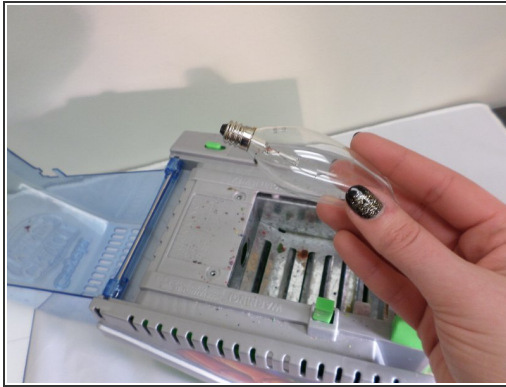
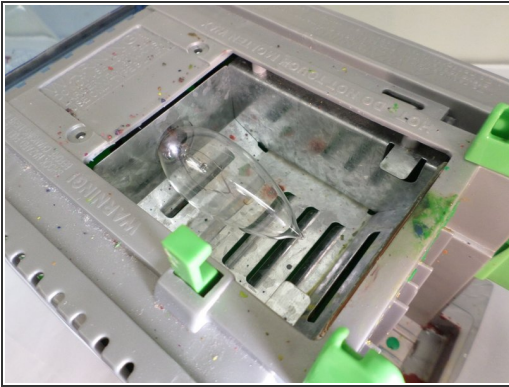
- Press the green arm away from the melting tray. Remove the melting tray.
- Pop the metal arms out of the green pivot support.

Step 2 — Remove the metal melting tray.



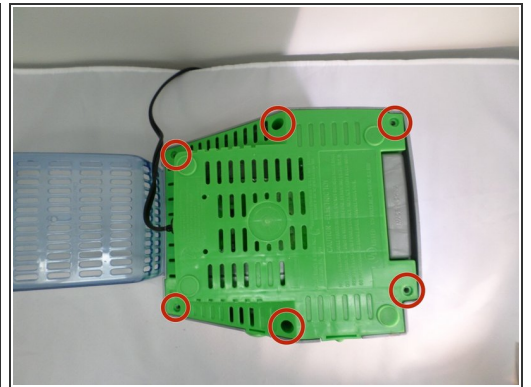
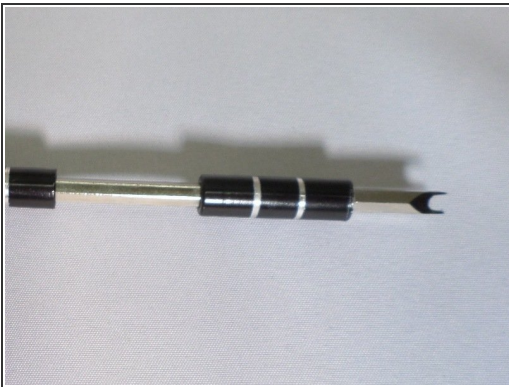
- Remove the 2 screws (.75cm in length) currently securing the metal melting tray with a Phillips #2 screwdriver.

Step 3 — Remove the light bulb



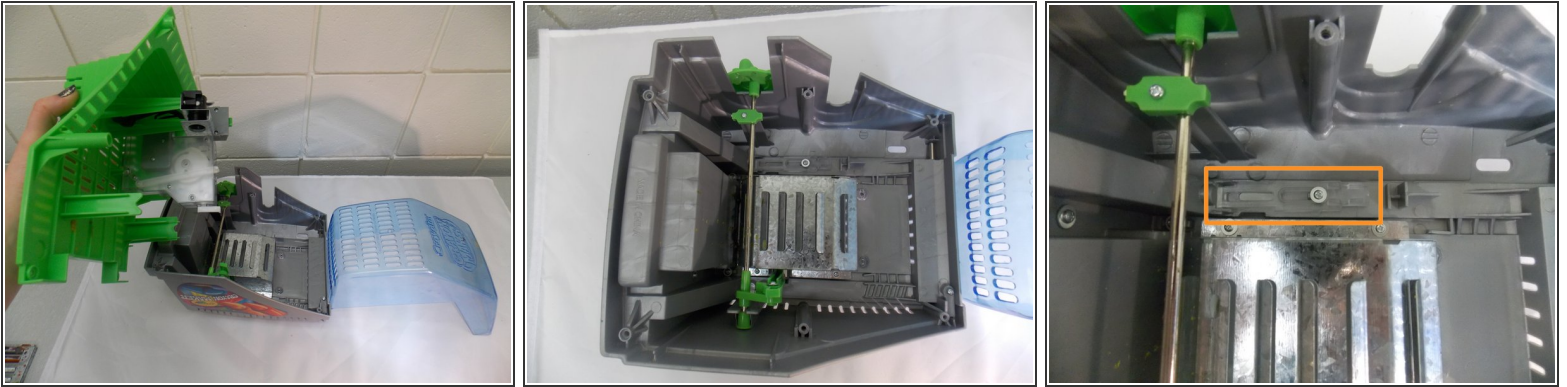
- The light bulb should now be revealed. Unscrew the burned out bulb and replace with a new bulb.

Step 4 — Remove the green base from the crayon maker



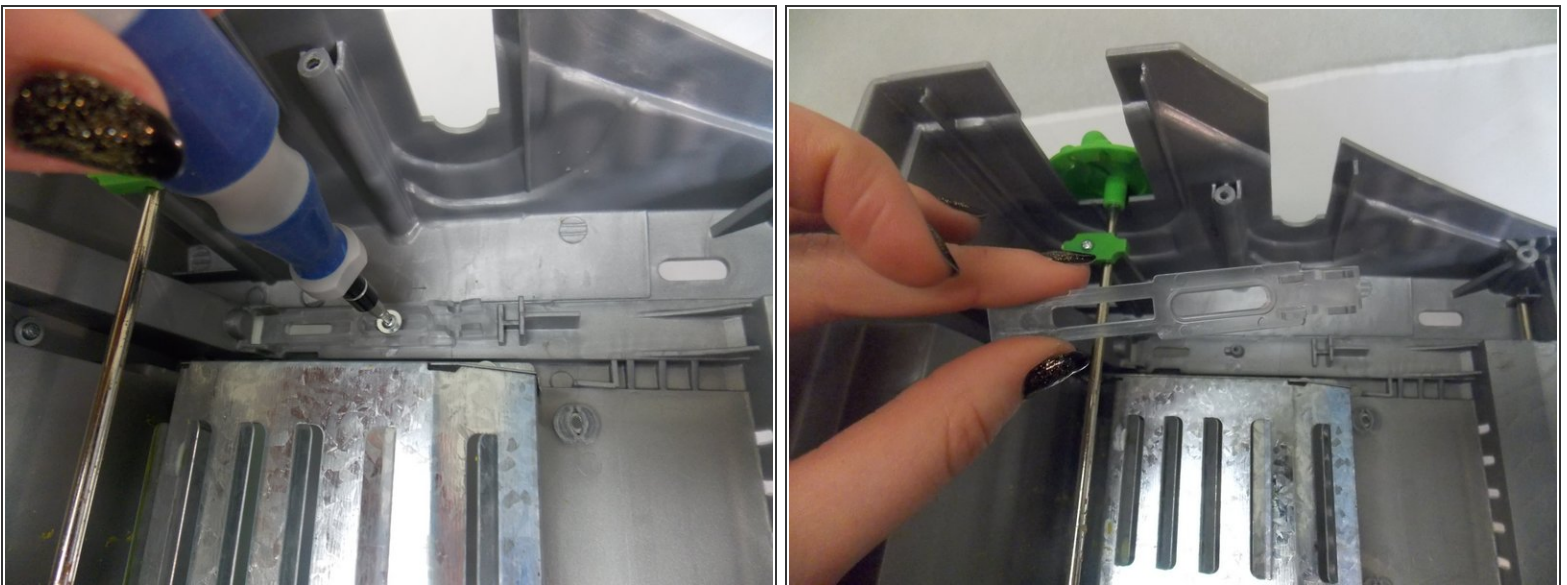
- Flip the crayon maker.
- Remove six screws (2 cm in length) with a spanner.
- Remove the green base plate and set it aside.

Step 5 — Locate the Plastic arm



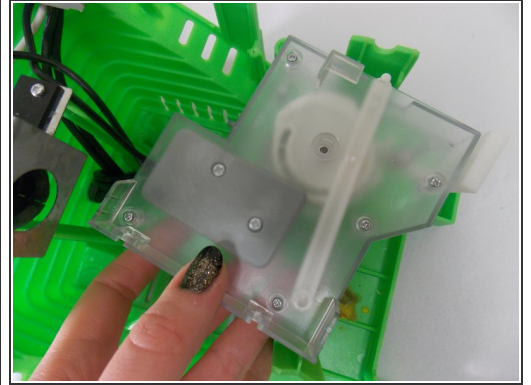
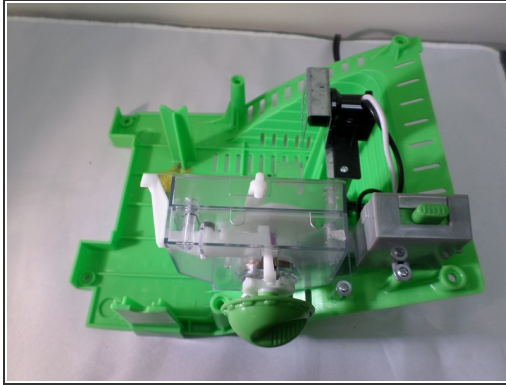
- Locate the clear plastic arm inside the control box.

Step 6 — Adjust/Replace the Plastic Arm



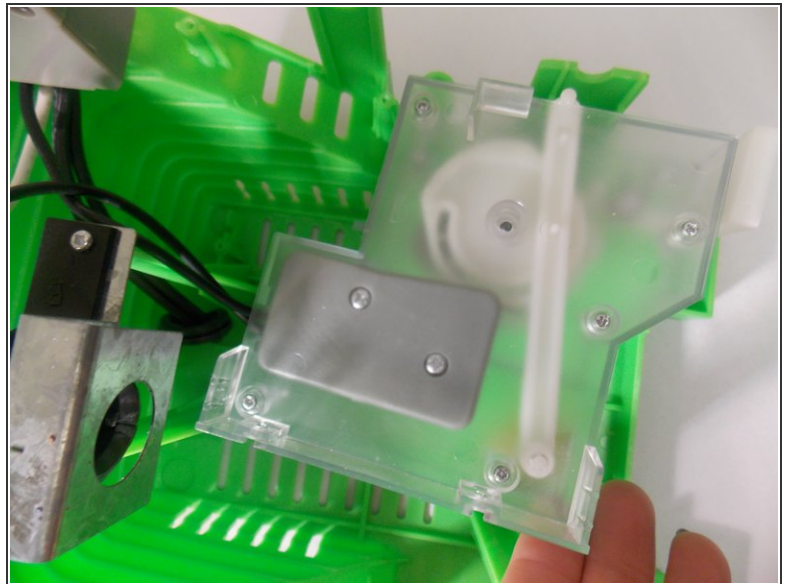
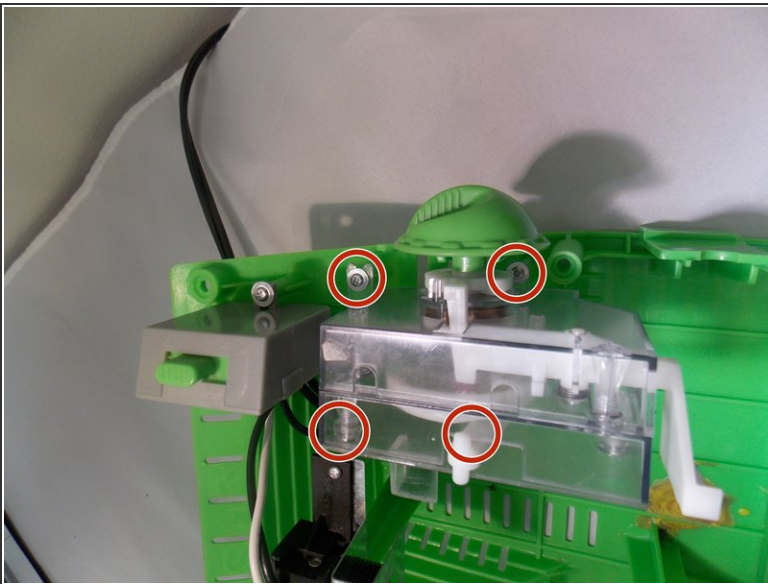
- If necessary, unscrew the plastic arm with a Phillips #00 Precision screwdriver and readjust the arm until the desired position is reached.
- If the plastic arm is broken, contact Crayola for replacement parts.

Step 7 — Locate the clear plastic box



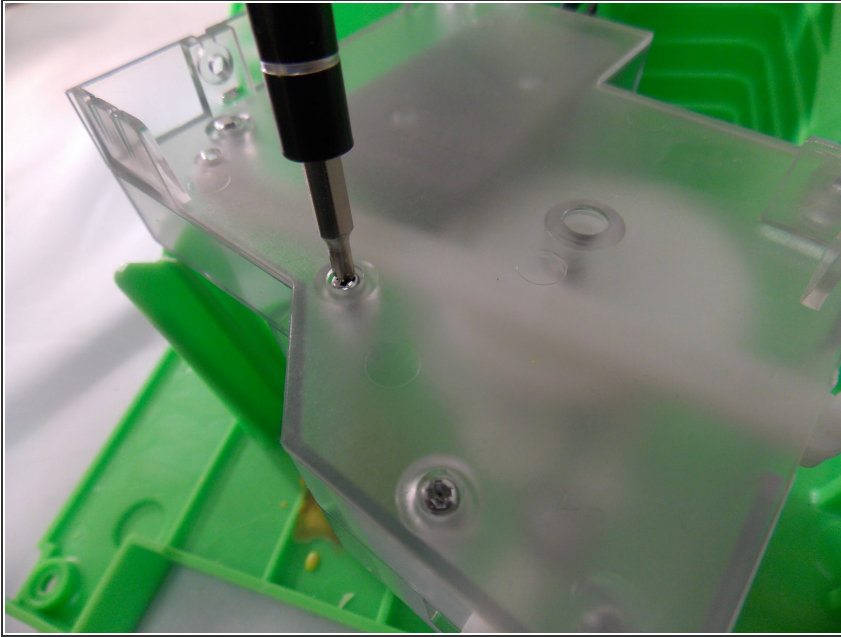
- Remove the green base from the crayon maker and set aside.
- Locate the clear box.

Step 8 — Remove clear box.



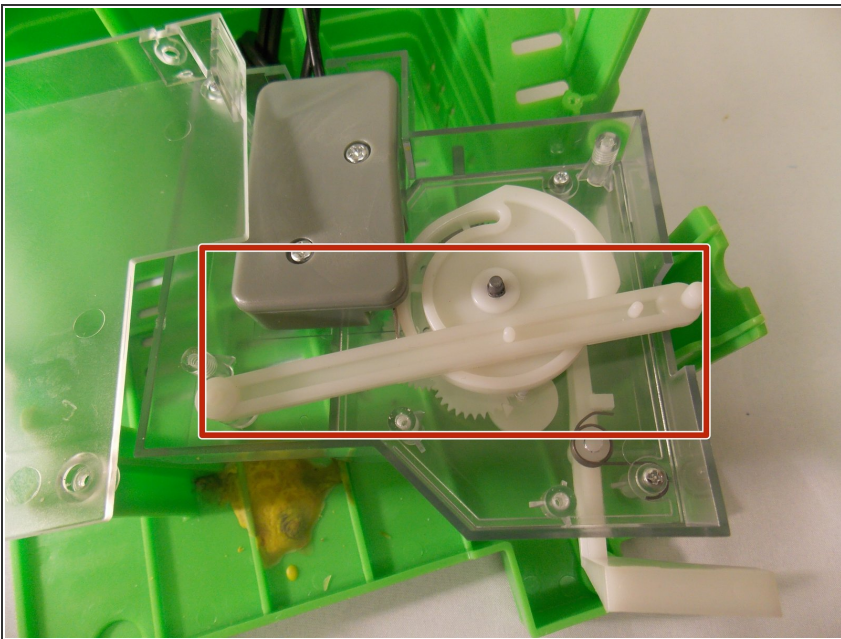
- There are four screws (circled in red) that need to be removed with a Phillips #00 Precision screwdriver.

Step 9 — Open Clear Plastic Box



- Remove five screws (1.5 cm in length) using a Phillips #00 Precision screwdriver and open the clear plastic box.

Step 10 — Check placement of white plastic arm.



- The plastic arm should be positioned as shown in the figure. Adjust the arm's position if necessary.
- ⓘ If the plastic arm is broken, contact Crayola for a replacement arm.

To reassemble your device, follow these instructions in reverse order.