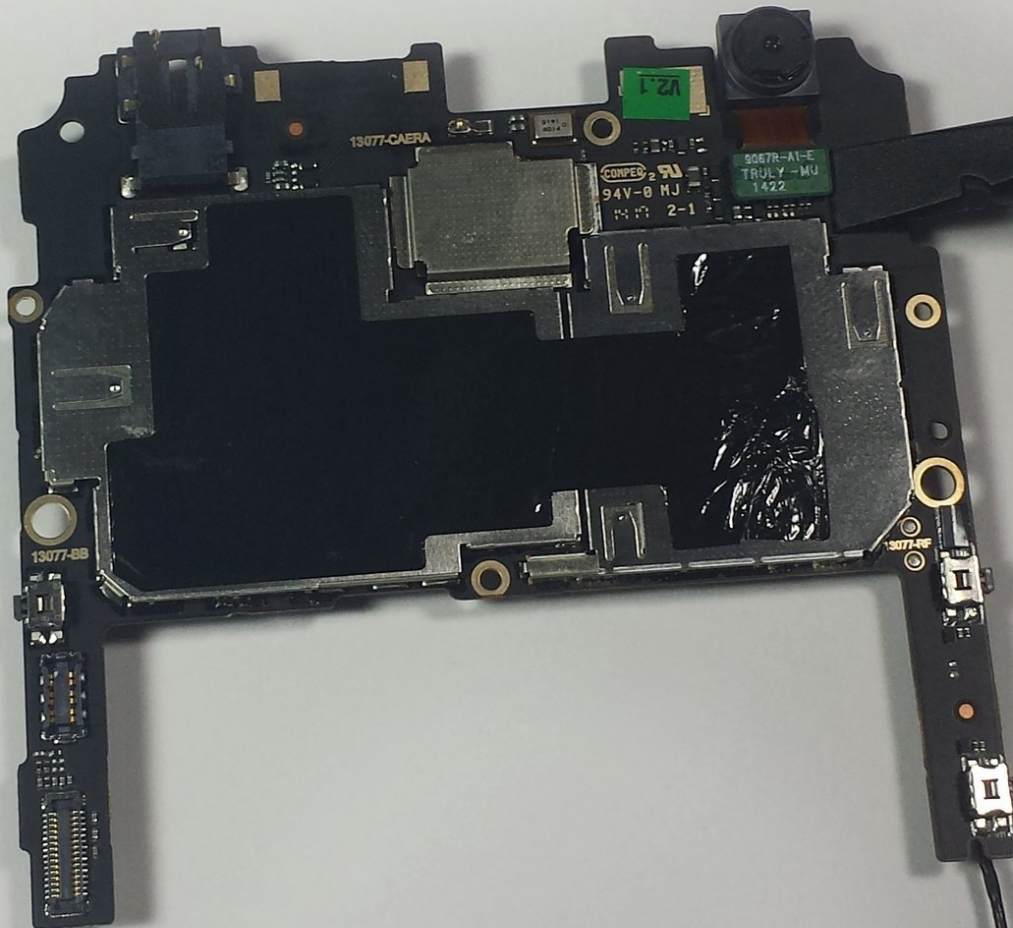




# Oppo X9000 Front Facing Camera Replacement

The front facing camera allows users to take pictures that face the same direction as the screen. This allows for self-portrait pictures to be taken more efficiently.

Written By: James Kragh



---

## INTRODUCTION

The Front Facing Camera is placed on the back side of the big motherboard chip. To remove the Front Facing Camera, the phone's motherboard needs to be completely removed.

---

### TOOLS:

- [Phillips #0 Screwdriver](#) (1)
  - [iFixit Opening Tools](#) (1)
  - [Spudger](#) (1)
-

## Step 1 — Removing the Back Cover



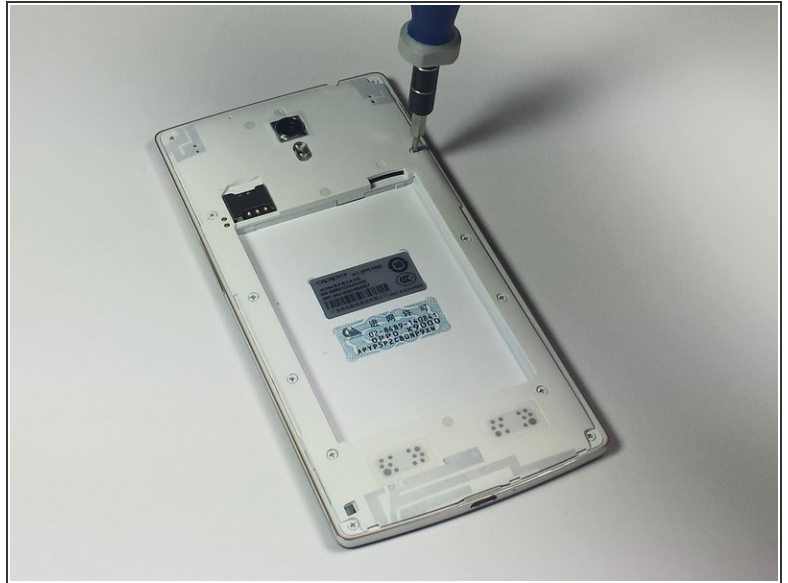
- Turn the phone over so that you are facing the back side of the phone.
- With your fingers, pry the back cover up starting from the top of the phone near the headphone jack and camera.
- Completely remove the back cover by moving down the sides and bottom with your fingers.

## Step 2 — Removing the Battery



- With your finger, remove the battery from the phone by gently lifting the top-right corner nearest to the camera.

### Step 3 — Remove the Back Panel Screws



- Remove the twelve exposed 3.6 mm Phillips screws on the rear of the phone using the 3.6 mm Phillips screwdriver.

⚠ Store all the screws in a safe place where you will not lose them.



## Step 4 — Remove the Rubber Stoppers



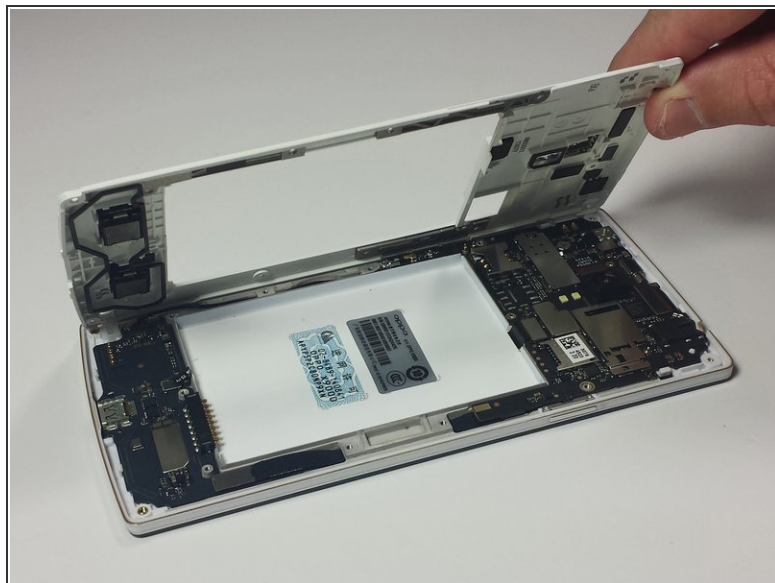
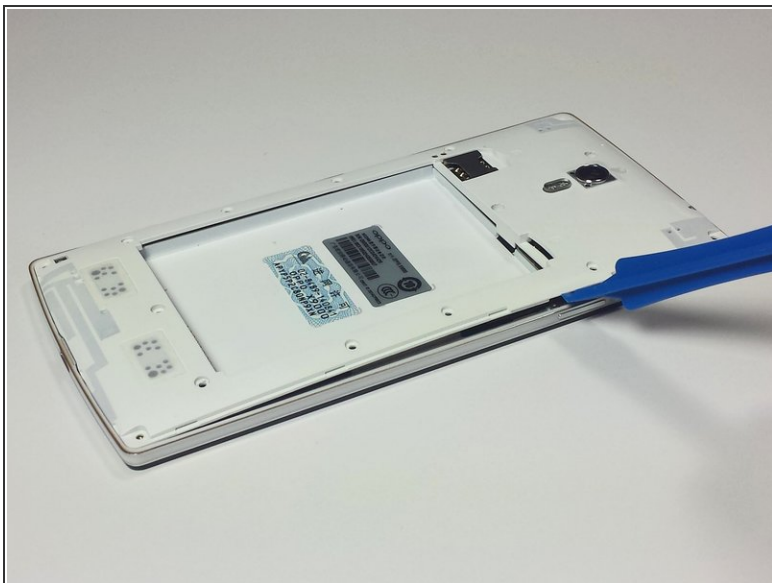
- Remove the three circular rubber screw covers on the back of the phone by slipping the spudger into the border between the rubber cover and the chassis. In one motion, pry the stopper out of the hole. This can take some force.

## Step 5 — Remove the Newly Exposed Screws



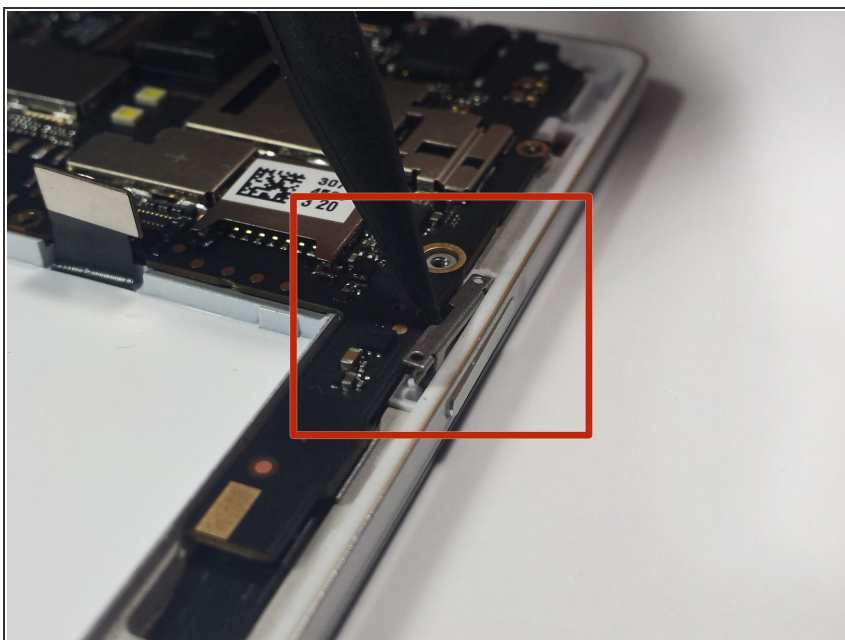
- With the 3.6 mm Phillips screwdriver, remove the three newly exposed 3.6mm Phillips screws.

## Step 6 — Lift off the Back Panel



- Insert the plastic opening tool underneath the chassis near the power button and pry the chassis from the phone. This should take a little force.

## Step 7 — Remove the Power Button Bracket



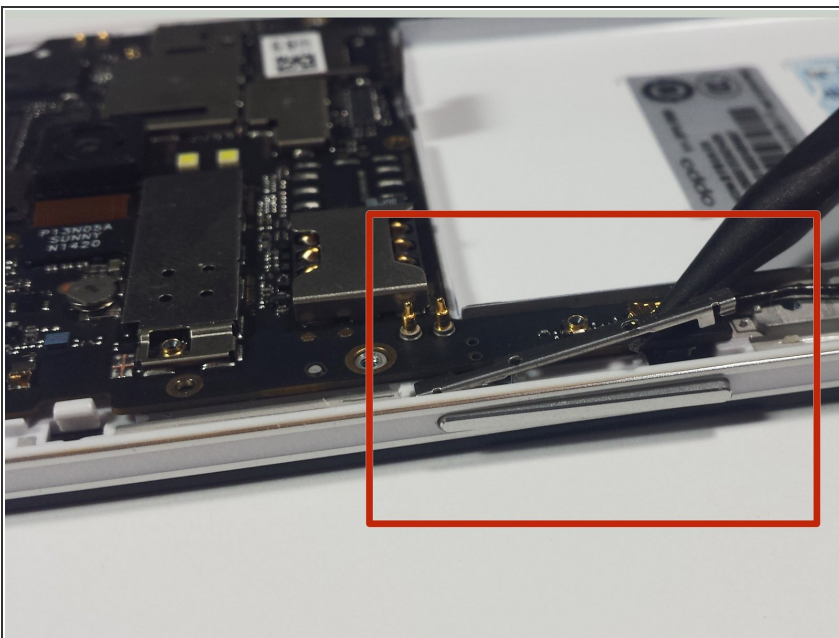
- Use the sharp end of the spudger to pry the power button bracket from the side of the rear case.

## Step 8 — Let the Button Fall Out



- Rotate the phone onto its side so that the power button falls out with ease.
- ⚠ Make sure not to lose the power button.

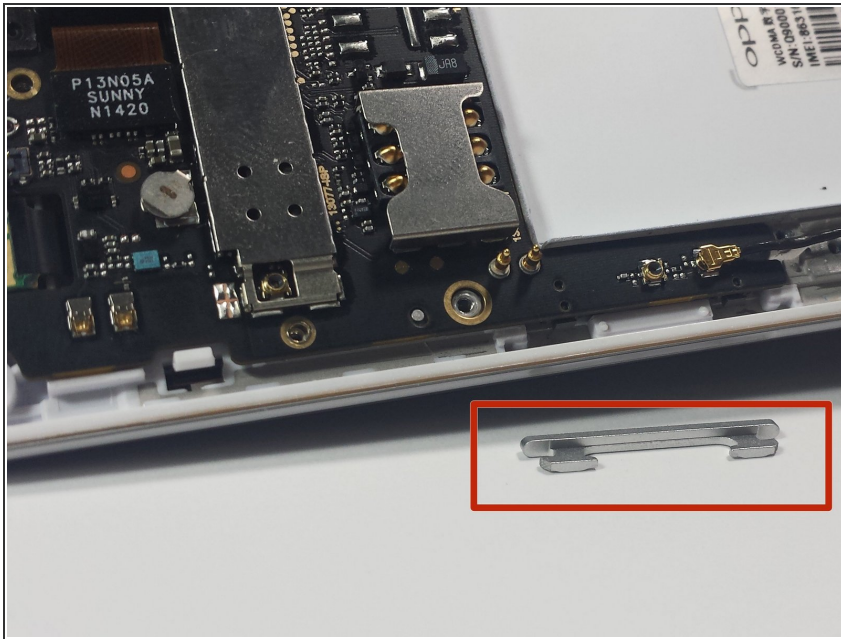
## Step 9 — Remove the Volume Button Bracket



- Use the sharp end of the spudger to pry the volume button bracket from the side of the rear case.



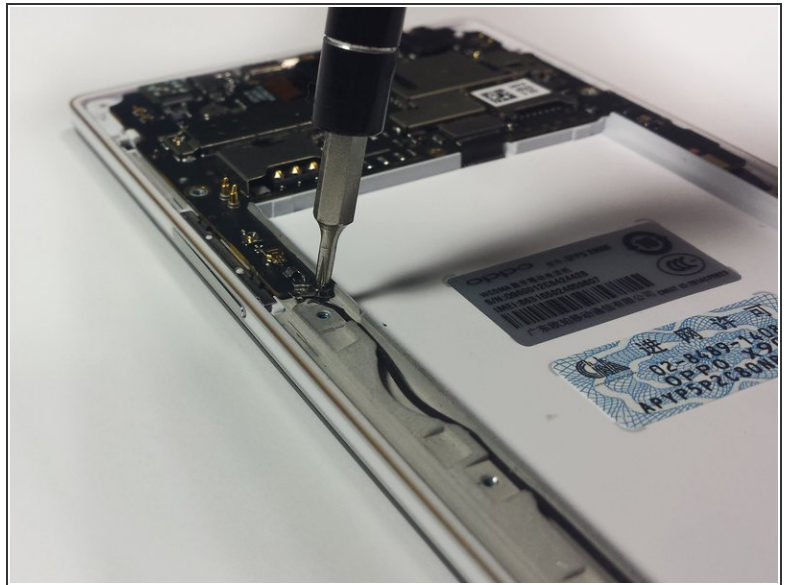
## Step 10 — Let the Button Fall Out



- Rotate the phone onto its side so that the volume button falls out with ease.
- ⚠ Make sure not to lose the volume button.

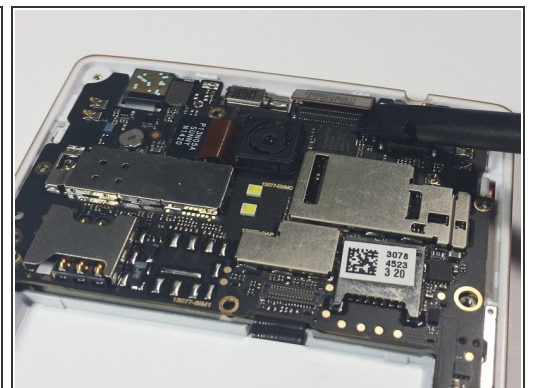


## Step 11 — Remove the Black Screws



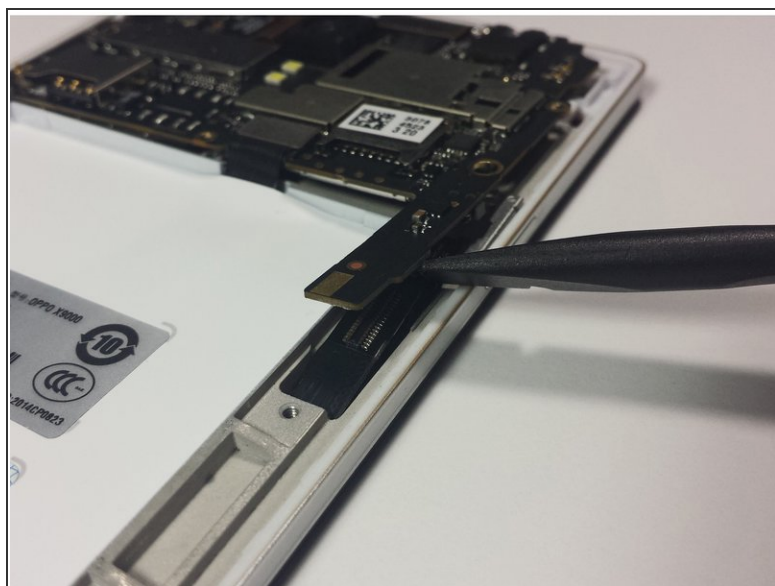
- ❗ The motherboard is split into two different chips. The large chip is located above where the battery rests and the smaller chip is located below it.
- Remove the three 3.6 mm Phillip's screws on the motherboard.
- ☑ A small silver piece of metal is connected to the lowest screw and may fall off. This metal holds the WiFi antenna in place and should not be lost; although the phone operates just fine without it.


## Step 12 — Disconnect the Motherboard



- Using the flat end of the spudger, pry the four tape connectors straight up out of their respective motherboard sockets.

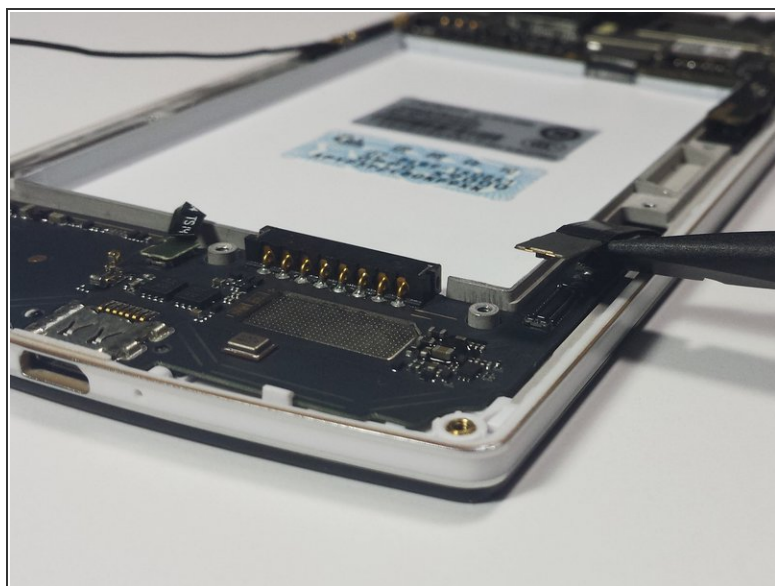
## Step 13



 This connection is a little bit more tricky to remove. Follow these directions carefully to avoid damaging the device.

- On the right side, there are two motherboard connections hidden underneath the motherboard. For these, insert the spudger in between the motherboard and the connection and rotate the spudger in a rocking motion until the two cables are disconnected from the motherboard.

## Step 14



⚠ Like the last step, this connection is tricky to remove. Please pay close attention to the guide to avoid damaging your device.

- On the bottom right only one connection is visible, however an additional connection is hidden underneath the first. To safely disconnect both, first unplug the visible connection then lift its tape up to expose the second socket. Similarly disconnect the second tape.

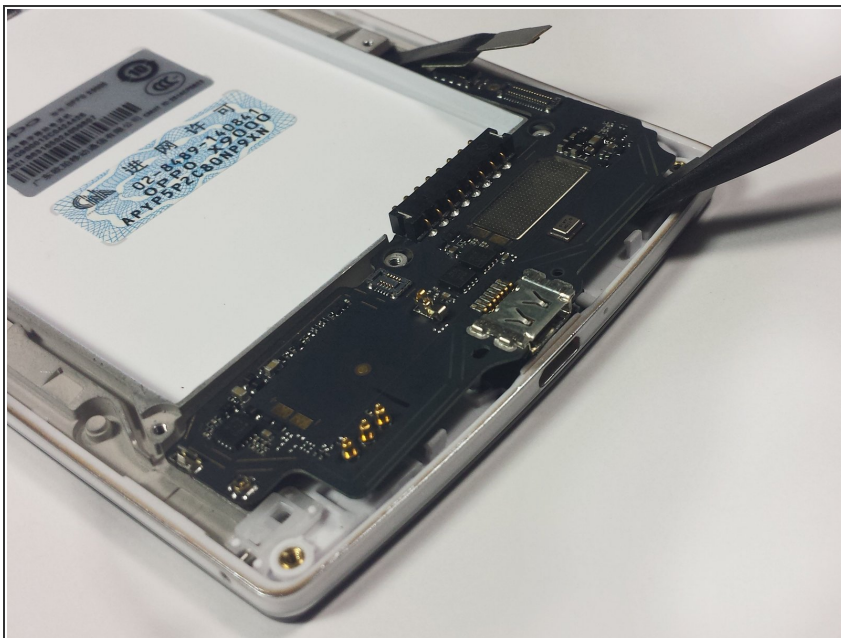


## Step 15 — Disconnect the WiFi Antenna



- With your fingers, gently pull upwards on the WiFi antenna near the connection on the smaller motherboard until the antenna is no longer connected to the bottom motherboard.

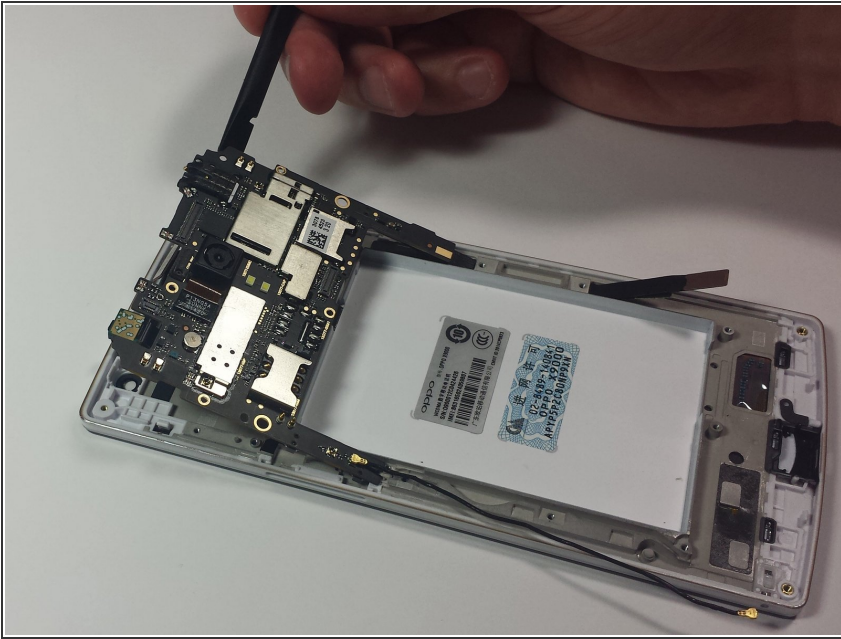
## Step 16 — Remove the Small Motherboard



- Use the spudger to carefully pry the small motherboard off of the phone.
- Start from the sides of the lower motherboard closest to the charging port. Carefully pry the motherboard off until it is no longer connected to the phone.

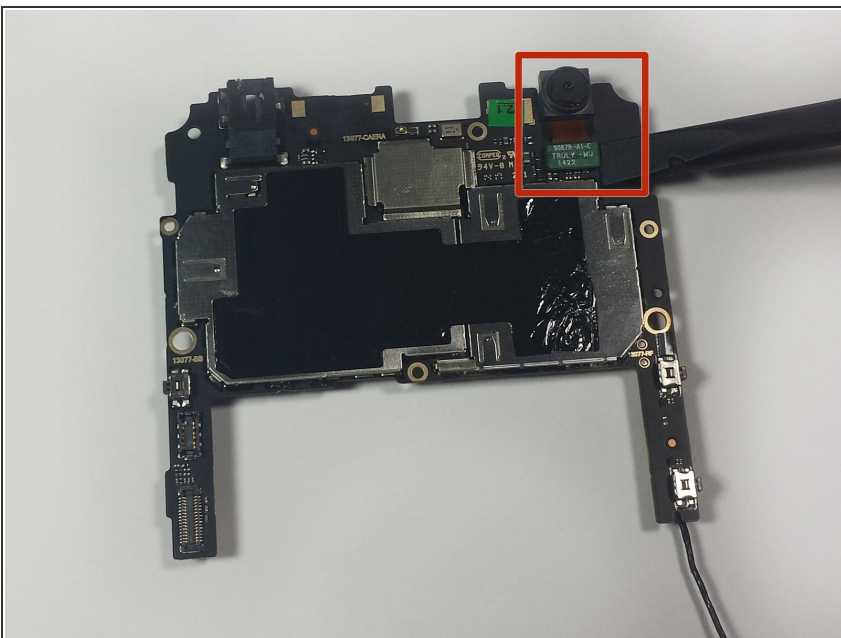


## Step 17 — Remove the Big Motherboard



- Use the spudger to carefully pry the bigger motherboard off of the phone.
- Start from the top of the large motherboard. Carefully pry the motherboard off until it is no longer connected to the phone.

## Step 18 — Remove the Front Facing Camera



- Turn the large motherboard chip around so that you are facing the back of the chip.
- Use the flat end of the spudger to disconnect the cable that attaches the camera to the large motherboard chip.

To reassemble your device, follow these instructions in reverse order.