



Canon PowerShot SD500 Digital ELPH Front and Rear Casing Replacement

This guide will help you remove the outer case of the Powershot SD500 Digital ELPH camera for replacements or repairs.

Written By: Taylor Shields



INTRODUCTION

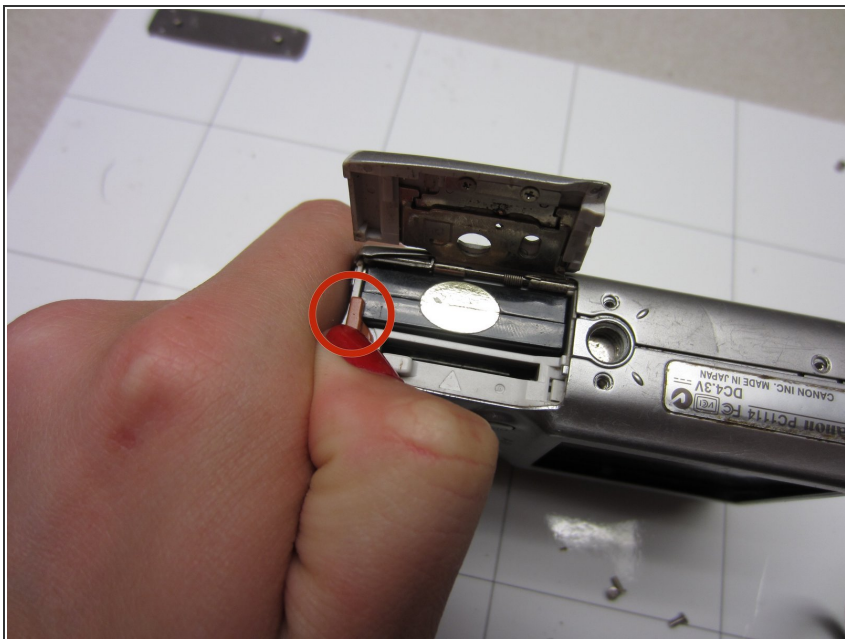
The outer case of the PowerShot SD500 Digital ELPH camera is the part that takes the greatest beating. Every time the camera falls, it lands on its case. Some common problems include cracking and paint wear.



TOOLS:

- [Phillips #00 Screwdriver](#) (1)
-

Step 1 — Battery



- Slide open the battery cover.
- Push the small orange tab to the side so the battery can be removed.

Step 2



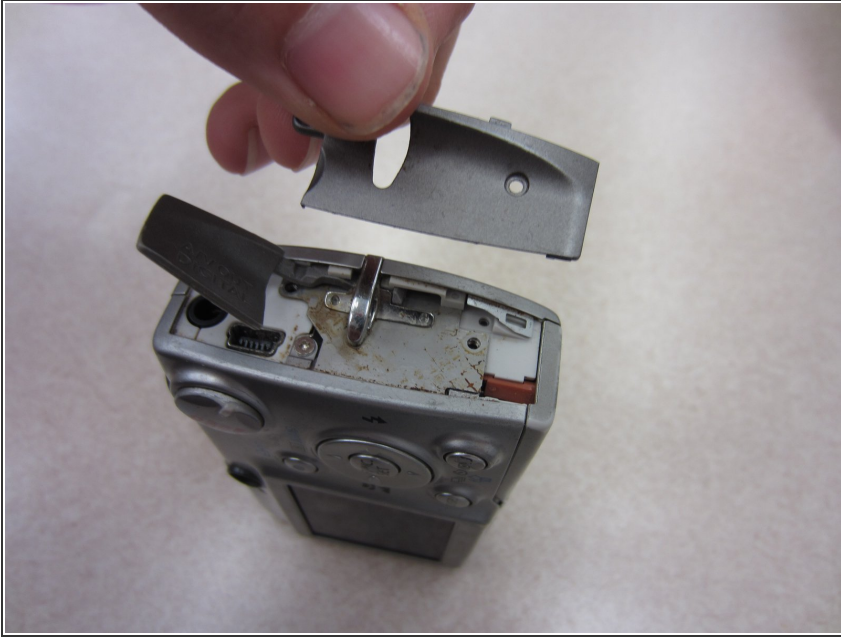
- Slide the battery out of the battery compartment.

Step 3 — Front and Rear Casing



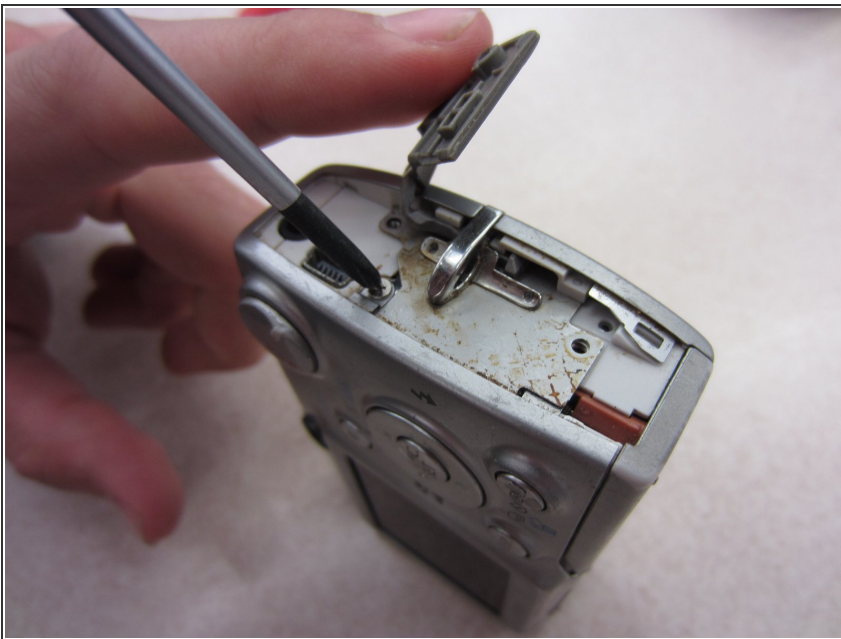
- Two Phillips screws need to be removed using a #00 Phillips screwdriver. The upper screw is under the USB port cover, which can simply be pulled away gently from the casing. the lower screw is visible on the panel.
 - The screws are different sizes. The .125 inch screw is located under the USB port cover. The 0.85 inch screw goes in the lower hole on the panel.
- i** When looking at the back of the camera, these two screws are on the right panel of the camera.

Step 4



- Remove the right side cover from the camera casing.

Step 5



- Remove a .07 inch Phillips screw using a #00 Phillips screwdriver.

Step 6



- Remove two .085 inch Phillips screws from the left side of the camera using a #00 Philips screwdriver.

Step 7



- Remove the left side cover from the camera.

Step 8



- Remove three .15 inch Phillips screws from the bottom of the camera using a #00 Phillips screwdriver.

Step 9



- Once the casing is unscrewed, hold the camera with one side facing down, and lift the opposite face of the casing to open it.
 - Remove the internal camera components and layout out all pieces on a clean surface.
- i** The front and back cover may require gentle rocking to remove.

This document was generated on 2020-11-22 06:39:44 AM (MST).

To reassemble your device, follow these instructions in reverse order.