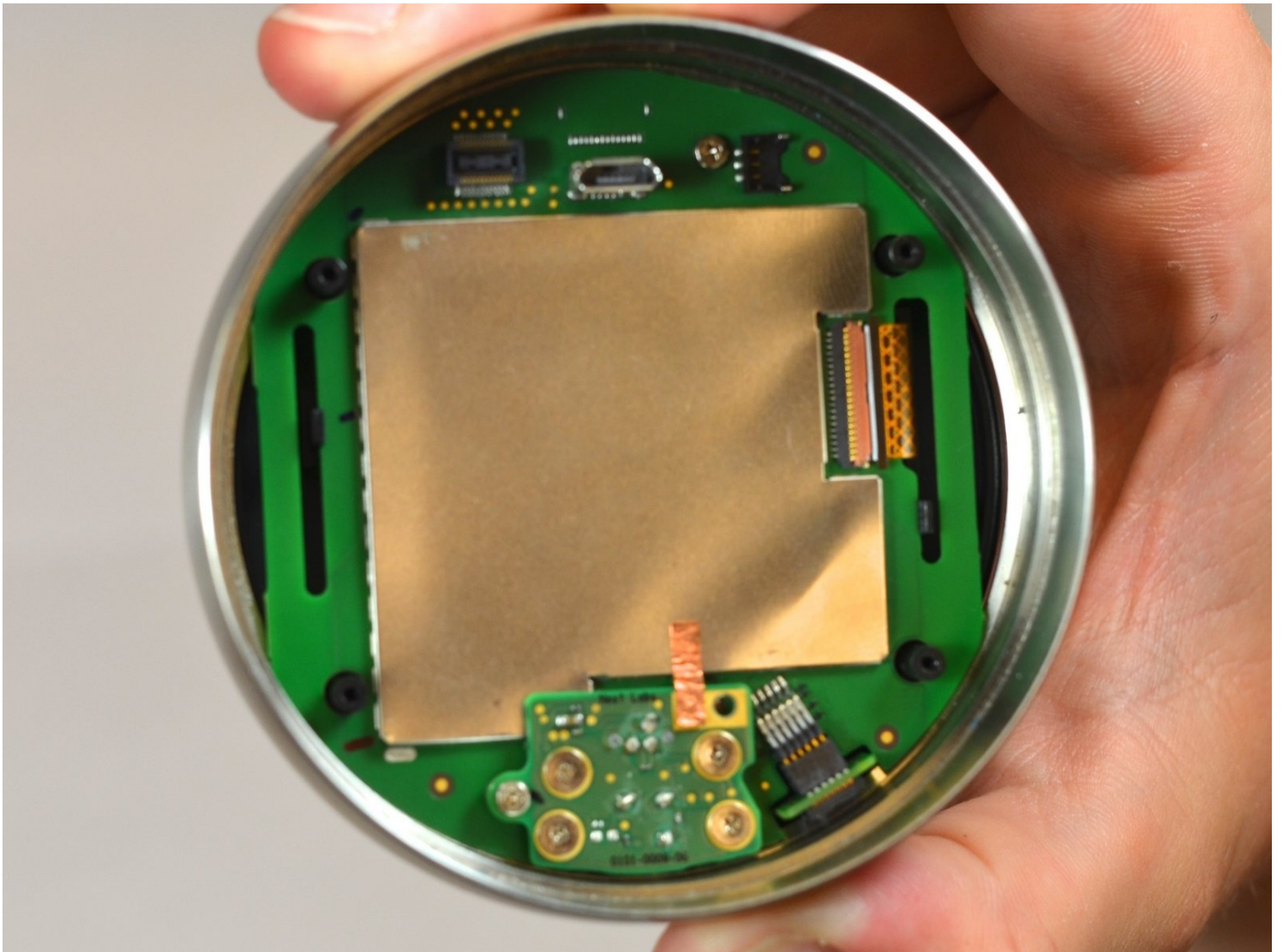




# Nest Learning Thermostat 2nd Generation Auto-Away Sensor Replacement

When replacing the auto-away sensor, battery...

Written By: Justin Curry



## INTRODUCTION

When replacing the auto-away sensor, battery removal is necessary. The battery replacement guide should be a prerequisite before starting. The tools required are tweezers and a Phillips #0 screwdriver.

---

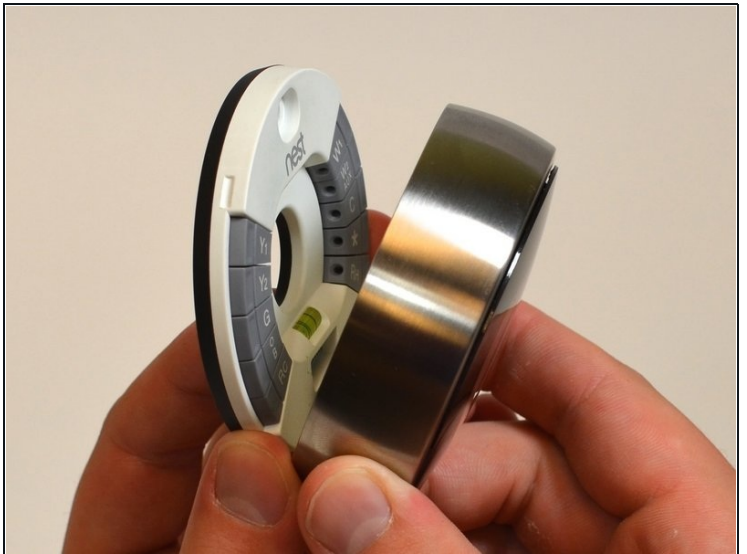
### TOOLS:

Phillips #0 Screwdriver (1)

Tweezers (1)

---

### Step 1 — Removal from Wall



- Grasp the display's metal outer ring with your fingers and pull directly away from the wall.

## Step 2 — Open Display



- Turn the display over.
- Remove the four 6 mm screws from the back of the display using a Phillips #0 screwdriver.

## Step 3 — Remove the back of the display

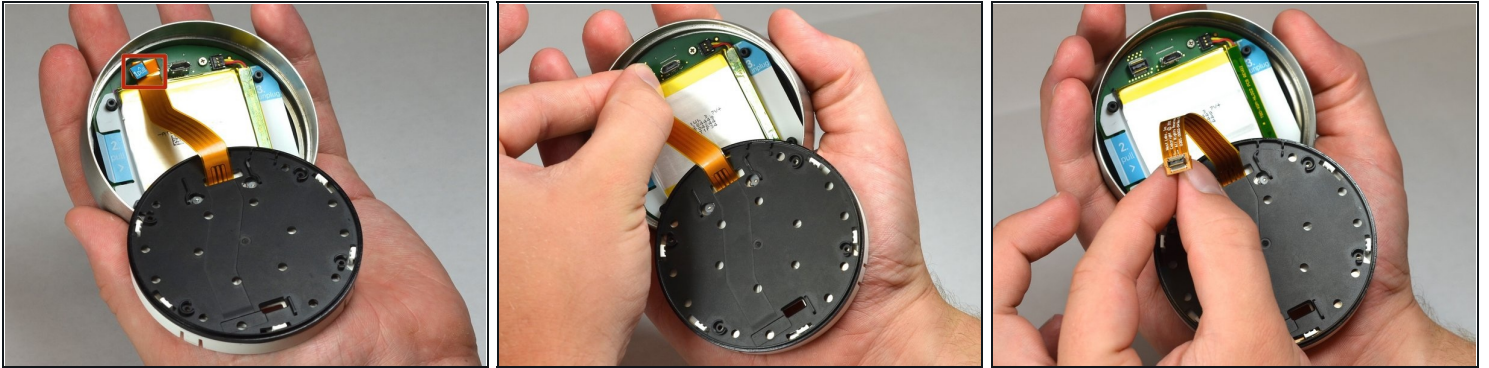


- Pinch the gray 20-pin connector with your fingers and pull directly away from the display.

⚠ Do NOT pull too far as there is a ribbon on the back panel connecting the 20-pin connector to the display.

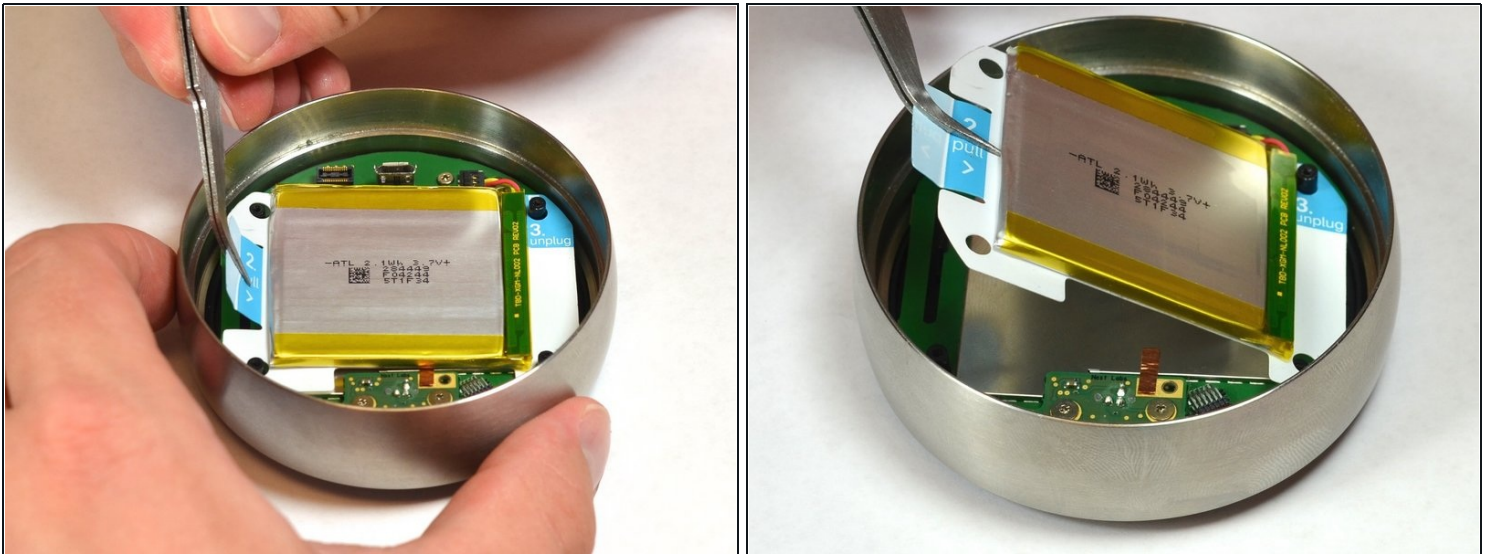


#### Step 4 — Disconnect the base connection ribbon cable.



- Locate the blue pull tab at the end of the ribbon which says, "1. Pull".
- Grasp the tab with your fingers and pull directly away from the motherboard.

#### Step 5 — Lift battery from the base



- Locate the blue tab which says, "2. Pull".
- Use [tweezers](#) to pull the battery up and away from the display.

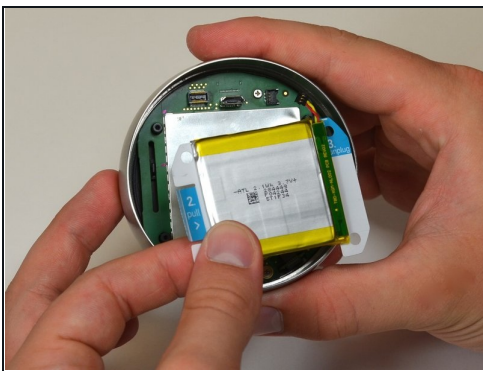
⚠ Do NOT pull too far, as the battery is still connected to the motherboard and must be unplugged.

## Step 6 — Disconnect the battery from the motherboard



- Locate the blue tab which says "3 unplug".
- Grasp the battery with your fingers. Pull gently directly away from the display to unplug the battery from the motherboard.

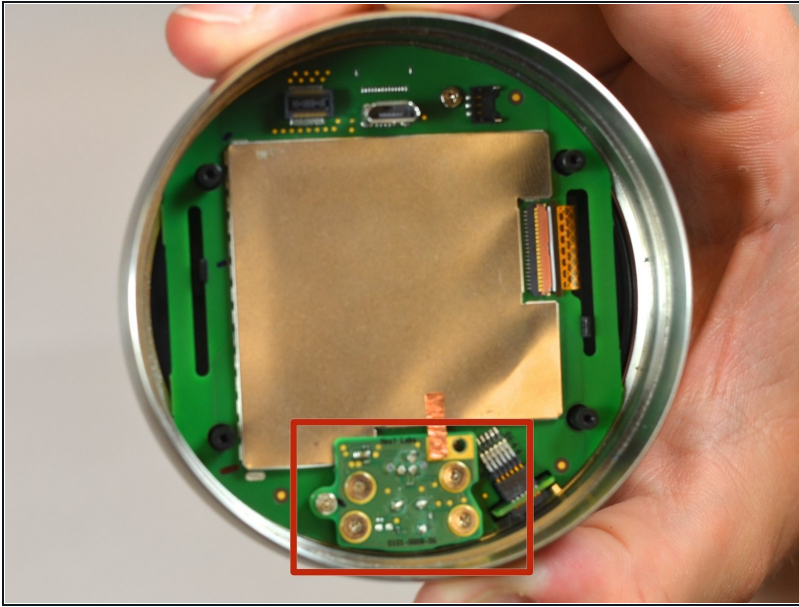
## Step 7 — Remove battery from the display



- Grasp the battery with your fingers and pull directly away from motherboard to separate the battery from the display.

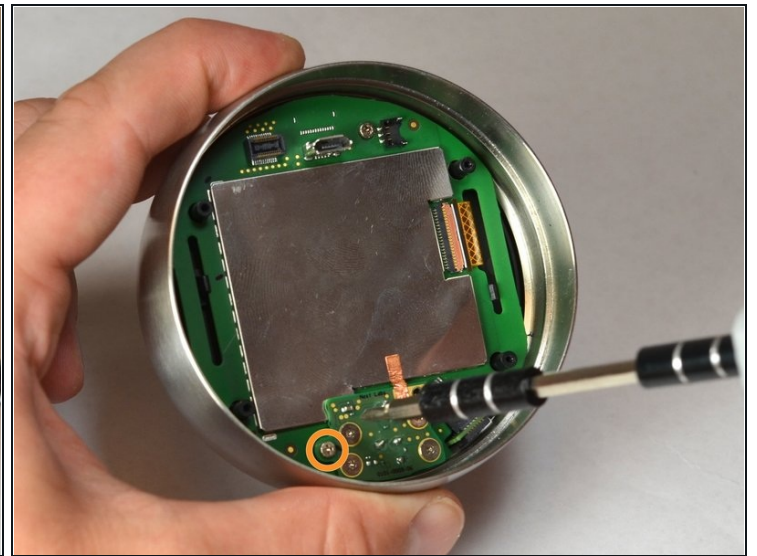
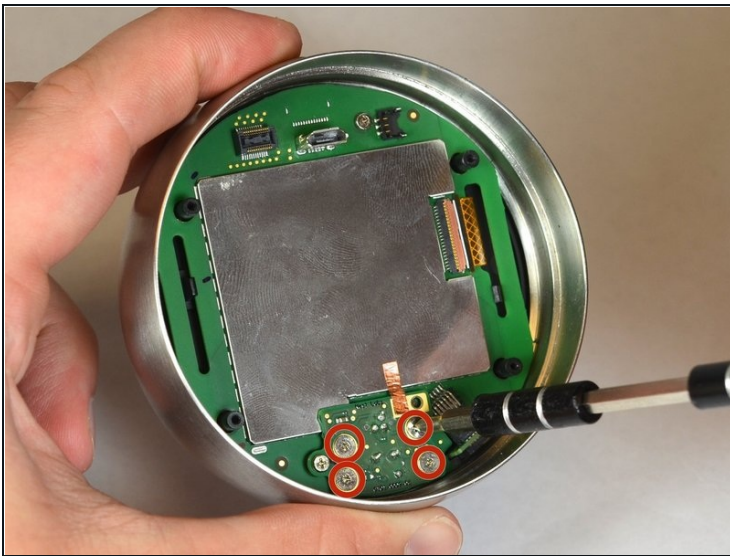


## Step 8 — Locate auto-away sensor



- Locate the auto-away sensor.

## Step 9 — Remove screws



- Remove the four 3mm screws with a #0 Phillips screwdriver.
- Remove the one 4mm screw located at the edge of the auto-away sensor. Use a #0 Phillips screwdriver.

## Step 10 — Remove auto-away sensor



- Lift the auto-away sensor from motherboard using [tweezers](#).
- Peel the copper foil gently from the EMI shield.

---

To reassemble your device, follow these instructions in reverse order.