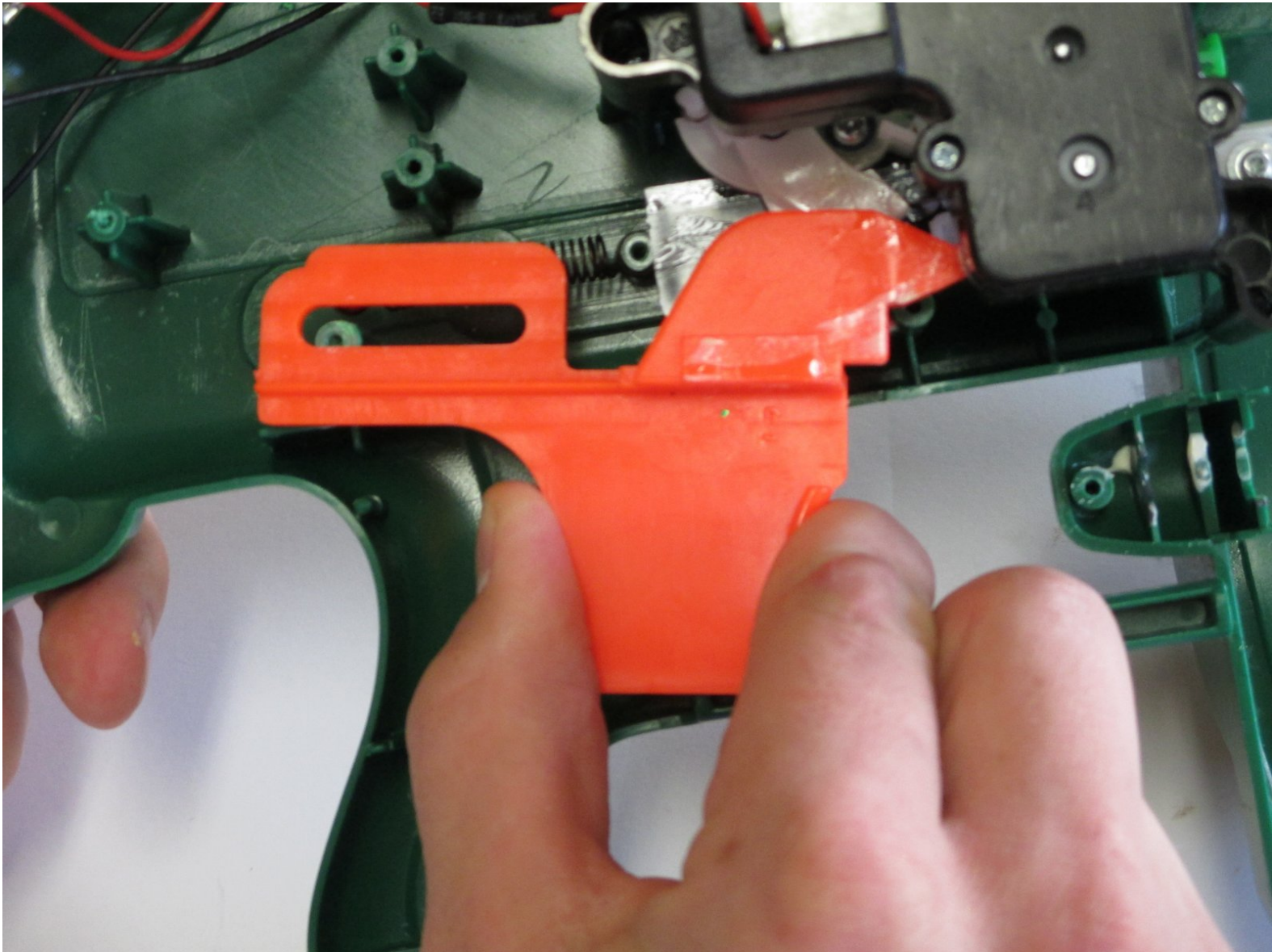




Automatic Tommy 20 Trigger Spring Replacement

Replace the spring in the trigger of your gun so that you can fire darts.

Written By: Moira Foster



INTRODUCTION

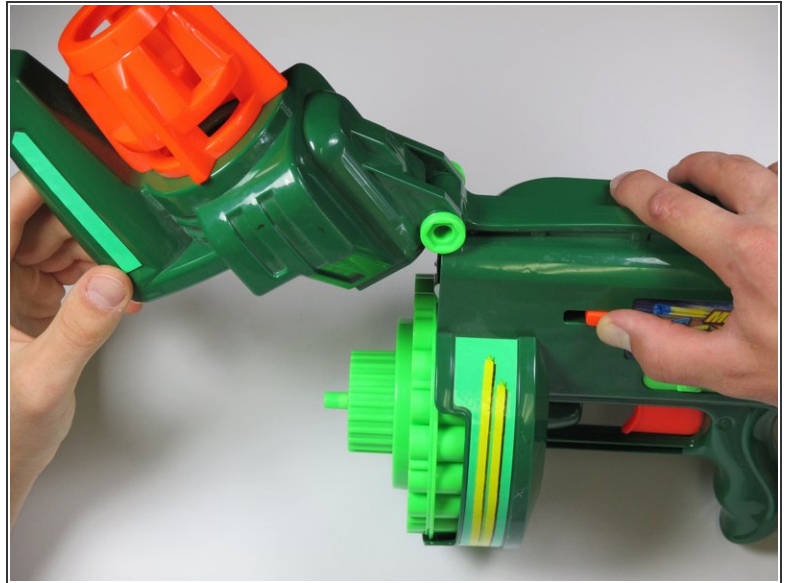
You will need to have a #00 Phillips screw driver and a great attitude to replace this important component of your gun! Also, watch out for all the small parts such as the spring itself, they are easy to lose track of! Also cracking the gun open may make you nervous but just take each step one at a time and you will be fine.



TOOLS:

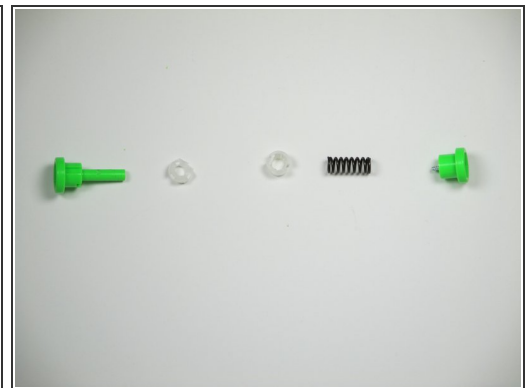
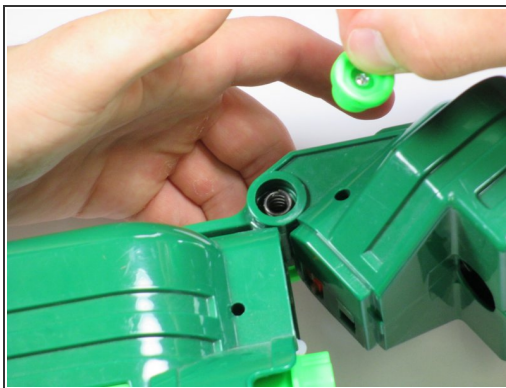
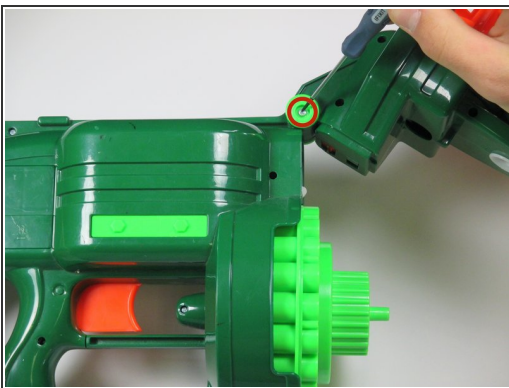
- [Phillips #00 Screwdriver](#) (1)
 - [Phillips #1 Screwdriver](#) (1)
-

Step 1 — Splitting the Gun into Two Halves



- Locate the orange slider on the front side of the gun.
- Pull the orange slider towards the back of the gun while lifting up on the nose the gun.

Step 2



- Remove the single 1/8 in. screw at the junction of the body and the nose using a Philips #00 Screwdriver.
 - Remove all parts within the chamber to be able to completely detach the nose of the gun.
- ★ Be careful to keep track of all the components for reassembly.

Step 3 — Ammo Drum



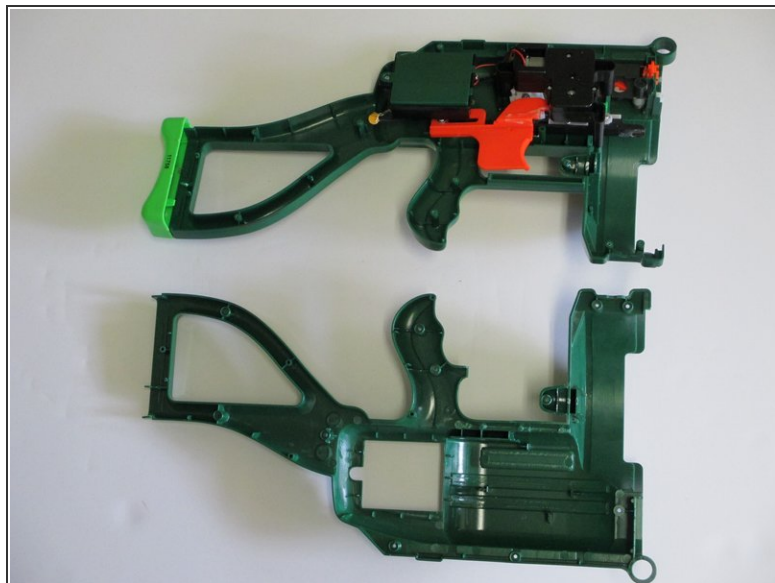
- Remove the 1/16 in. screws using a Phillips #00 Screwdriver as indicated in the photo on the left.
- Remove the 1 mm screw on the battery lid using a Philips #1 Screwdriver as indicated in the photo on the left.

Step 4




- Carefully spread apart the two halves of the gun, and lift out the ammo drum.

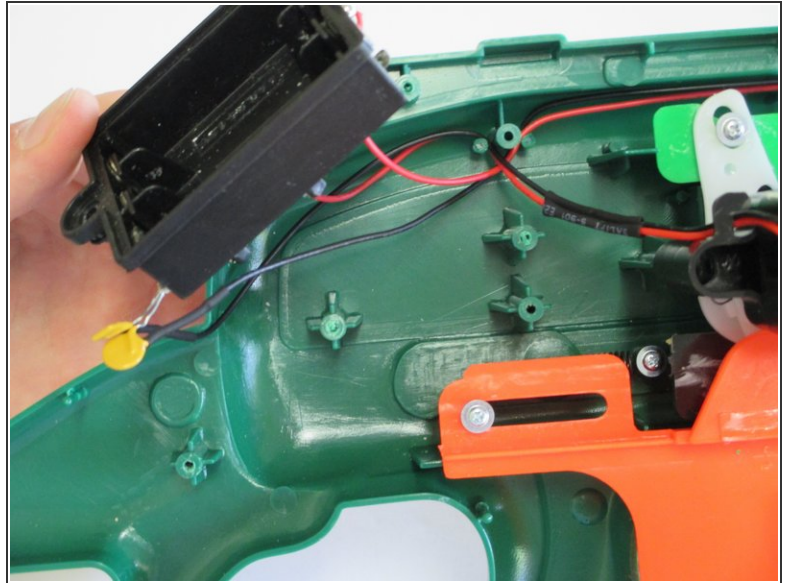
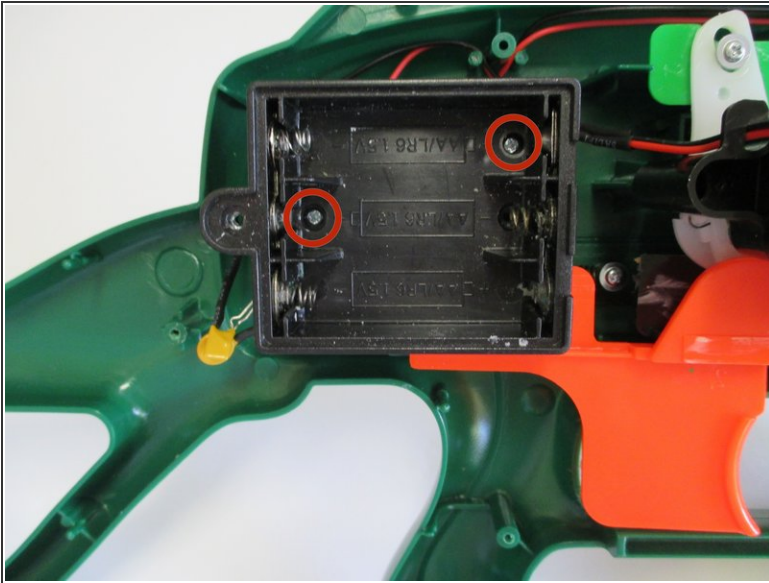
Step 5 — Split the Gun into Two Halves



- Grab both sides of the gun and pull forcefully in an upward and outward motion to remove from the light green stock.

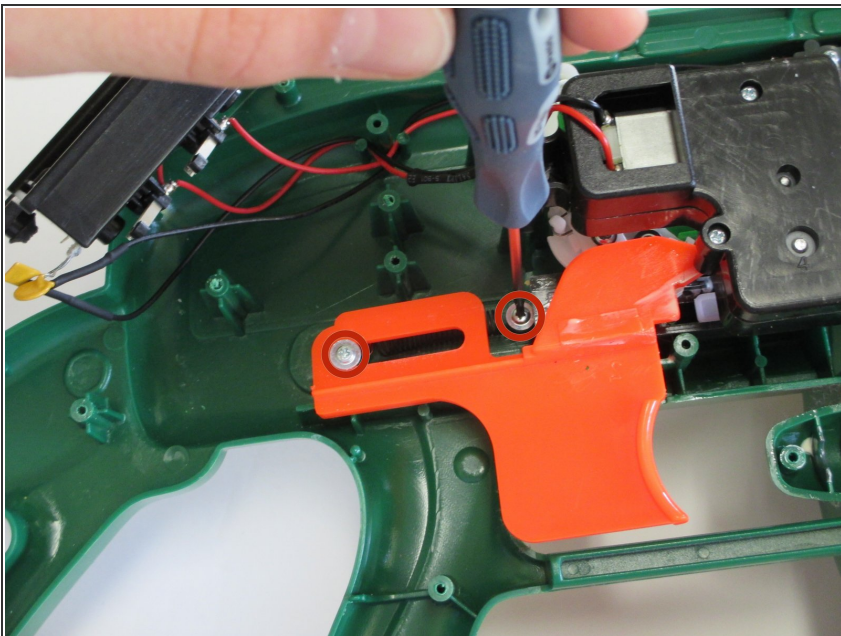
 If this is your first time disassembling your gun, the stock will be glued to each half of the gun's body. To break off the stock from the frame of the gun, you will need to carefully wiggle the two halves so that the glue will break apart. The plastic on the gun may break or warp slightly.

Step 6 — Removing the Battery Box



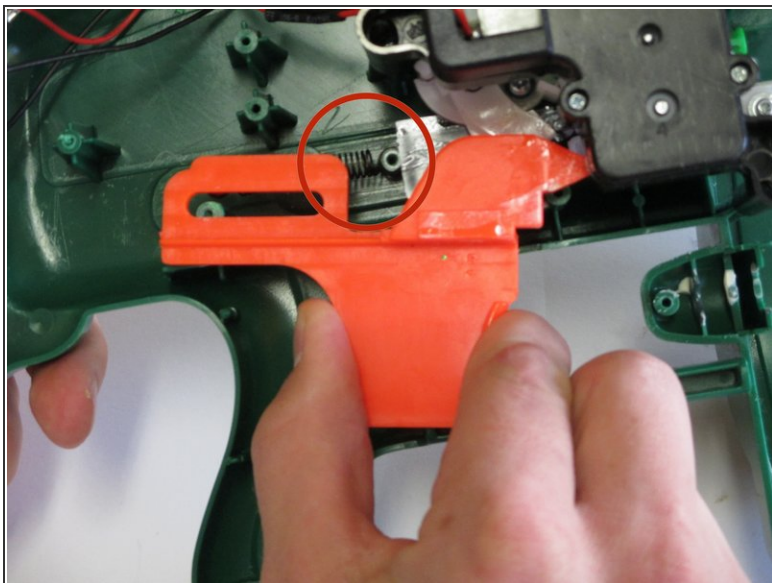
- Remove the two 1/16 in. screws attaching the battery box to the frame of the gun using a Phillips #00 Screwdriver.
- Lift the battery box off the frame of the gun to give yourself access to the trigger mechanism.

Step 7 — Removing the Screws from the Trigger Mechanism



- Remove the two 1/6 in. screws connecting the trigger and trigger spring to the frame of the gun using a Phillips #00 Screwdriver.

Step 8



- Lift the plastic trigger away from the gun along with the attached spring.

⚠ Make sure you do not lift the trigger without the spring or the spring may stretch and no longer function properly.

To reassemble your device, follow these instructions in reverse order.