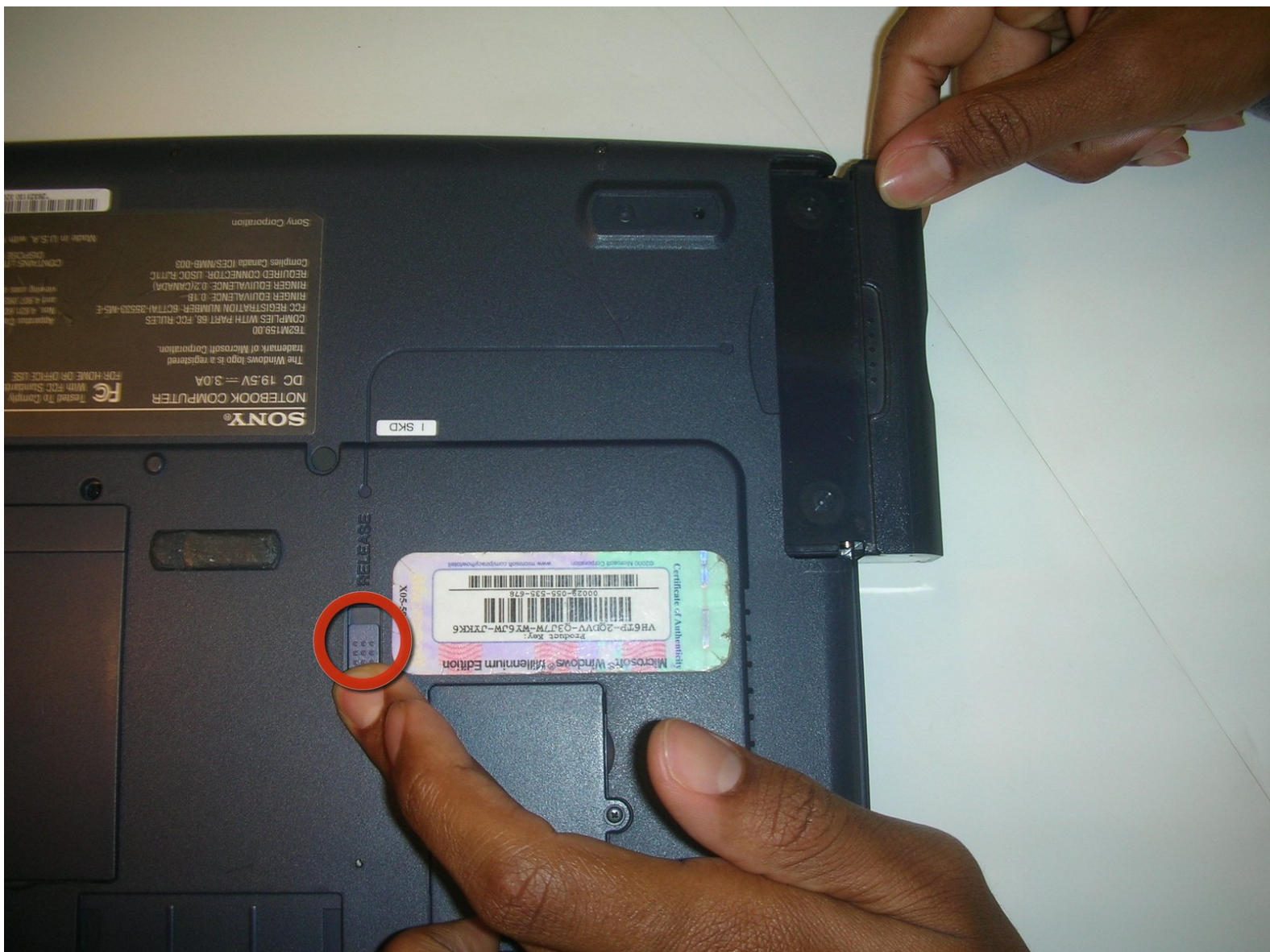




Sony Vaio PCG-981L Floppy Drive Replacement

The purpose is to open up the floppy drive so that you can check for any connection failures or damages.

Written By: Loracious



INTRODUCTION

If for any reason the floppy drive isn't working, the simplest solution is to replace the entire drive. But, if you're not able to acquire a new drive you may be able at least find the source of the failure through disassembling the drive.



TOOLS:

- [Phillips #1 Screwdriver](#) (1)
-

Step 1 — Floppy Drive



- Turn the device over so that its underside is facing up. Then, slide the blue floppy drive release button down and pull the floppy drive out of the laptop.

Step 2



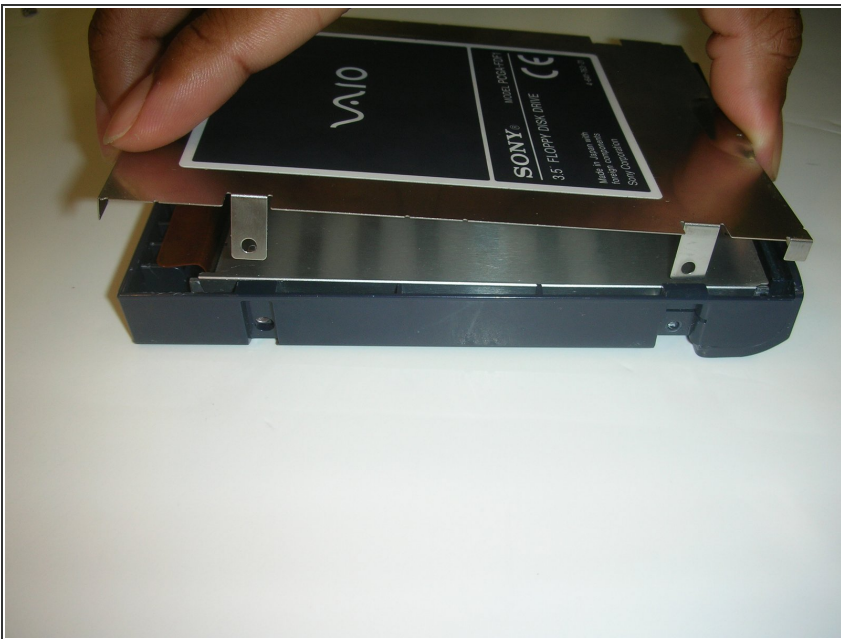
- Remove the floppy drive from the laptop.

Step 3



- There are two screws on each side of the floppy drive (four screws total). Remove these screws.

Step 4



- Remove the floppy drive core from its casing.

Step 5



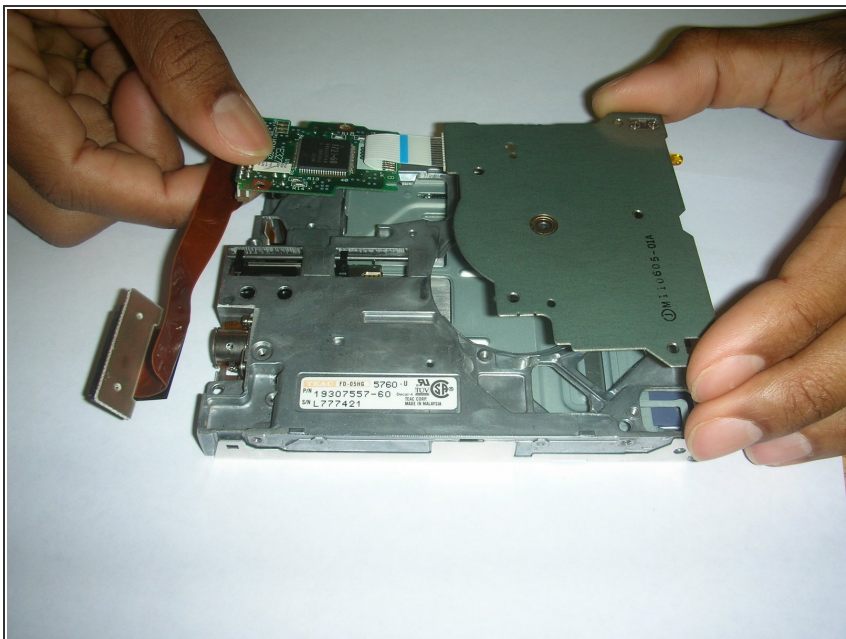
- Unscrew the five screws from the back of the optical drive.

Step 6



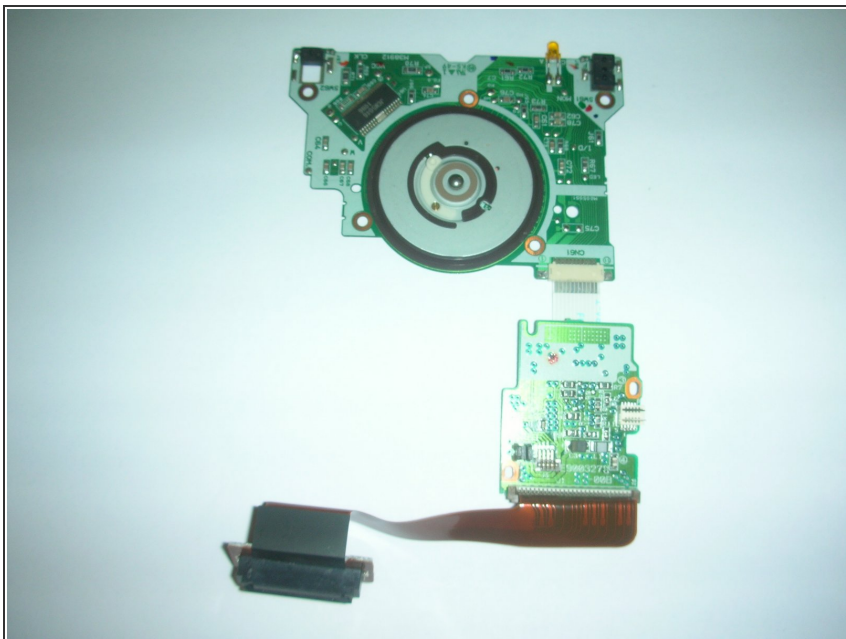
- Remove the two screws holding part of the floppy processing unit.

Step 7



- Remove the entire floppy drive processing unit.

Step 8



- Here is an isolated image of the core hardware of the floppy drive. This is where the floppy "magic" happens. Check for any connection failures or shortages. You may need to resolder some of the connections.

Step 9



- Here is an isolated image of the floppy drive casing unit.

To reassemble your device, follow these instructions in reverse order.