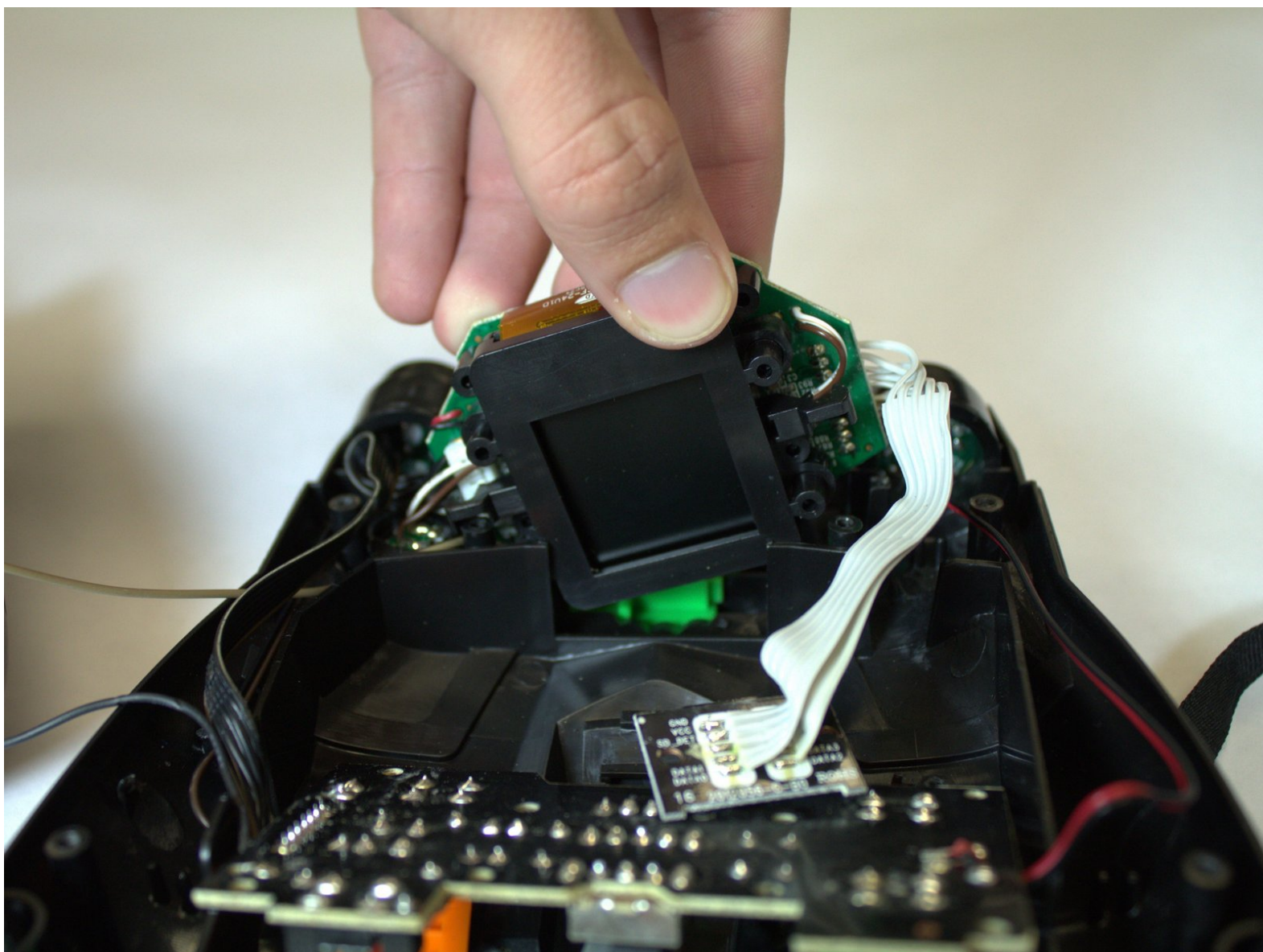




Spy Net Ultra Vision Goggles Camera & Display Screen Assembly Replacement

This guide will show you the step-by-step process for replacing the camera & display screen assembly.

Written By: Andrew Gittens



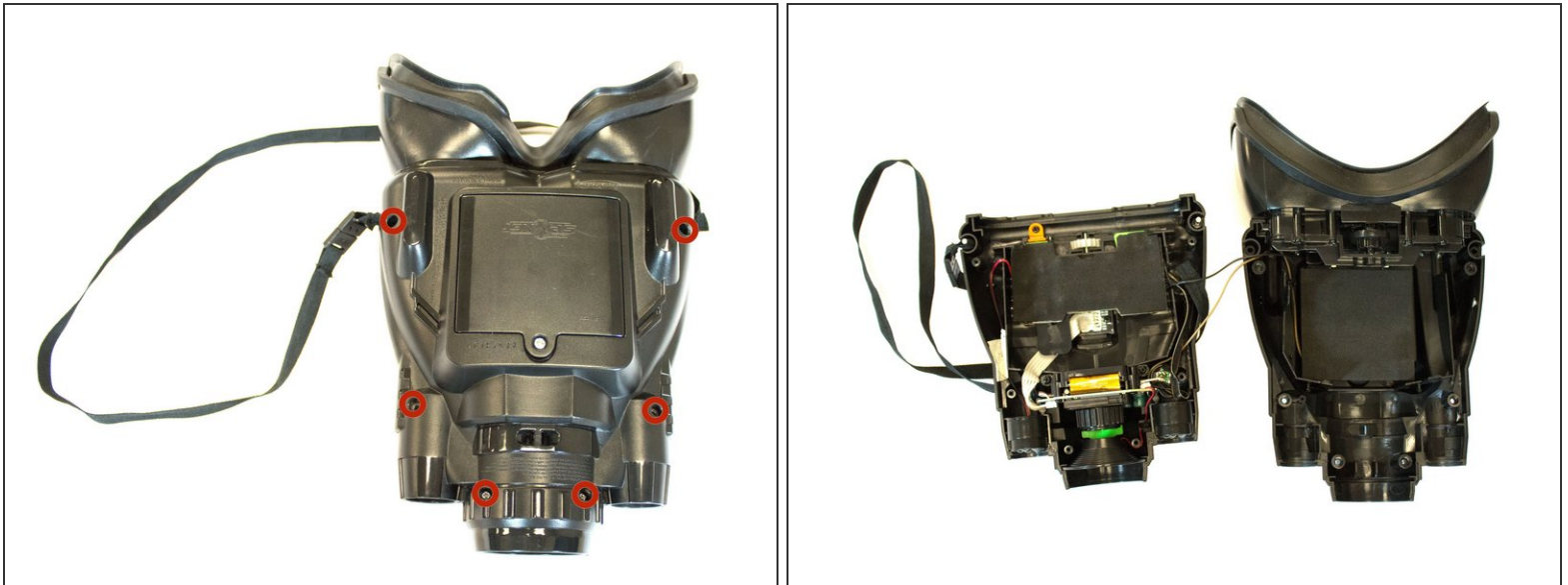
INTRODUCTION

This replacement is necessary if either the camera or display screen is faulty, since the two components cannot easily be separated. Even replacing the entire assembly is an extremely tedious task and requires quite a bit of meticulous soldering and de-soldering. It is not recommended for you to attempt this replacement unless you are highly skilled with a soldering iron. Take a look at the [Device Troubleshooting Page](#) before you begin to be sure that you have diagnosed the problem correctly.

TOOLS:

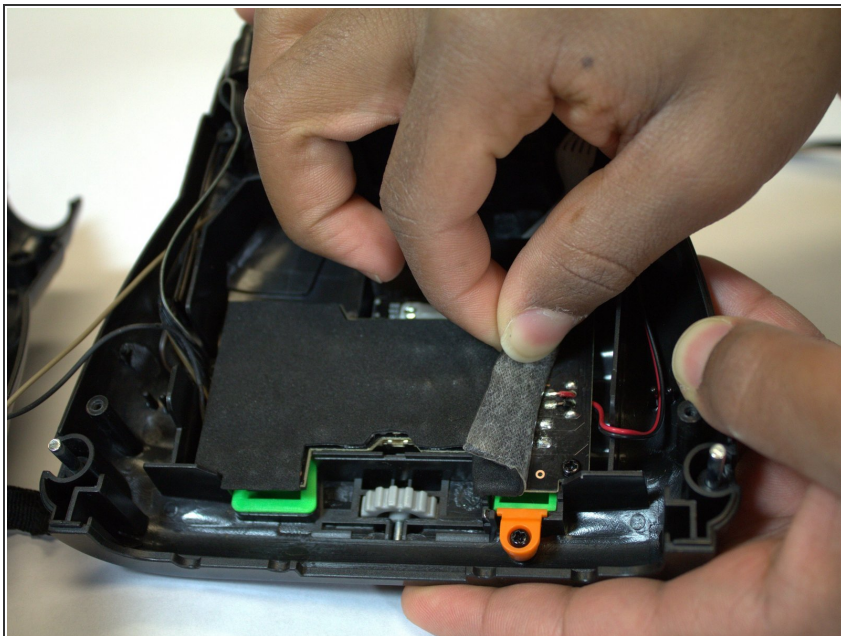
- [Phillips #0 Screwdriver](#) (1)
 - [Phillips #00 Screwdriver](#) (1)
 - [iFixit Opening Tools](#) (1)
 - [Portable Soldering Iron](#) (1)
 - [Solder](#) (1)
 - [Desoldering Braid](#) (1)
-

Step 1 — Open the Device



- Remove the six silver 11.4 mm Phillips #0 screws that hold the device shell in place.
- Pry open the device shell using the plastic opening tools if necessary. To do this, locate the grooves running along the side of the entire device and wedge it open.

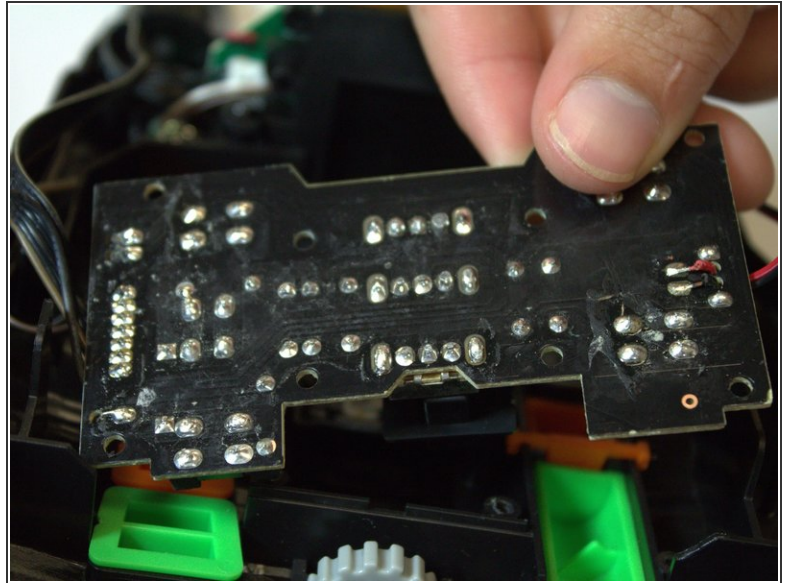
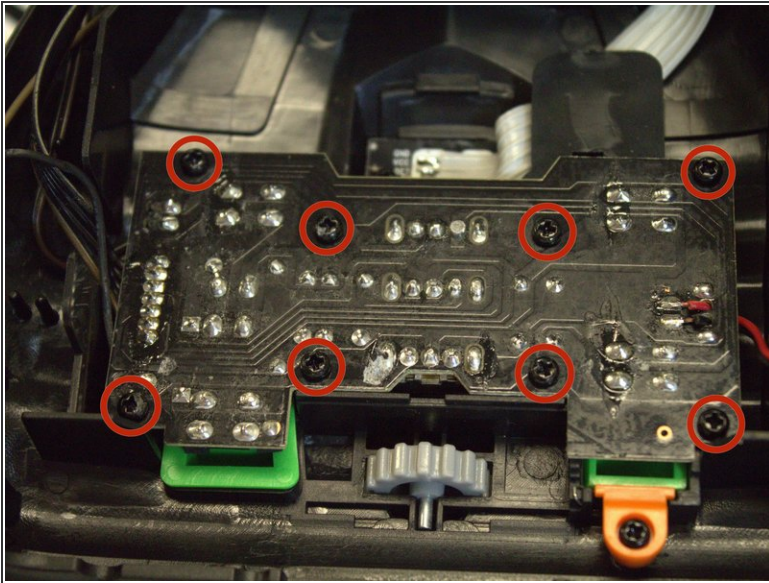
Step 2 — Remove the Foam Covering the Main Circuit Board



- Use your fingers to peel off the foam pad that covers the main circuit board.

⚠ Be careful not to tear the foam pad.

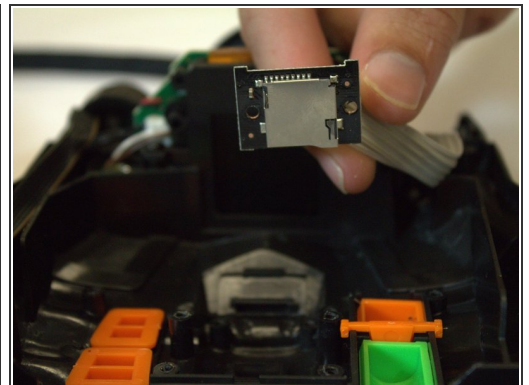
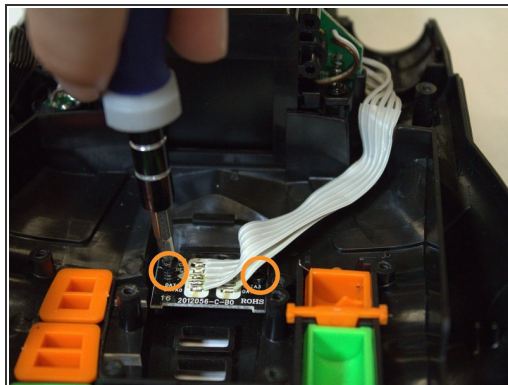
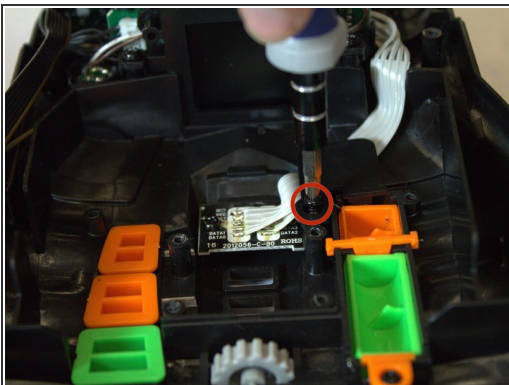
Step 3 — Remove the Circuit Board



- Remove the eight black 7.2 mm Phillips #0 screws from the top of the circuit board and lift it out of its place.

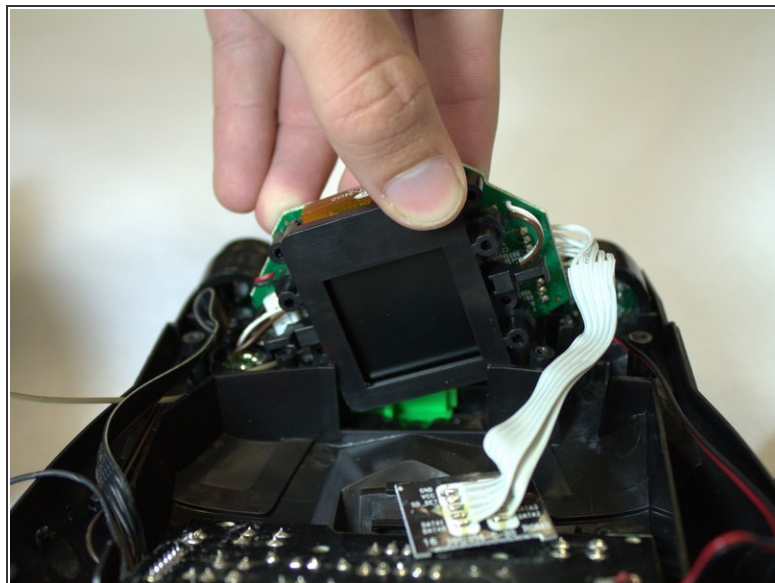
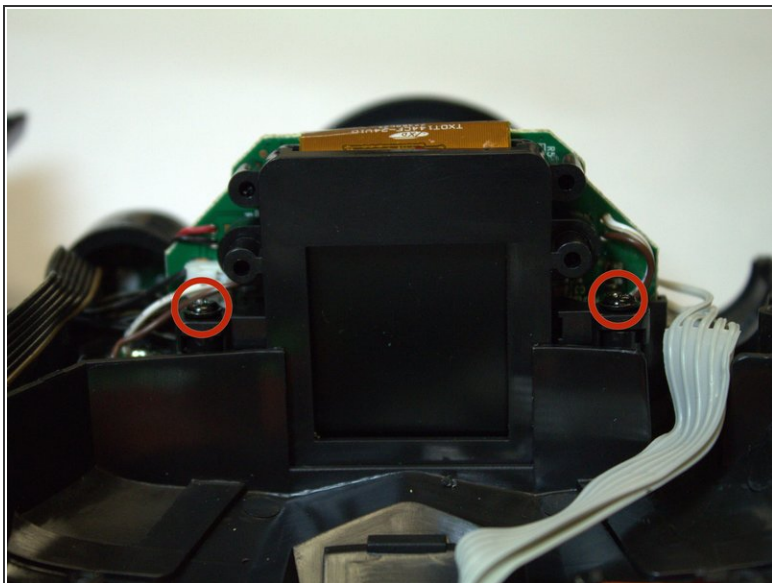
⚠ Be careful not to put too much tension on the various wires.

Step 4 — Remove the MicroSD Card Reader



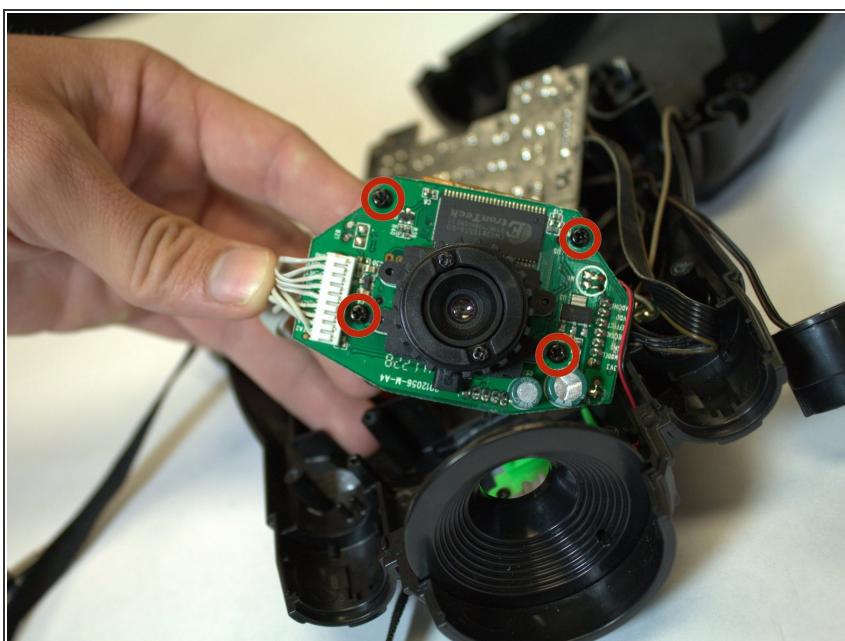
- Remove the one black 7.2 mm Phillips #0 screw from the plastic piece that holds down the microSD card reader wires.
- Remove the two black 7.2 mm Phillips #0 screws that hold the microSD card reader in place.
- You should now be able to lift the microSD card reader out of place.

Step 5 — Remove the Camera & Display Screen Assembly



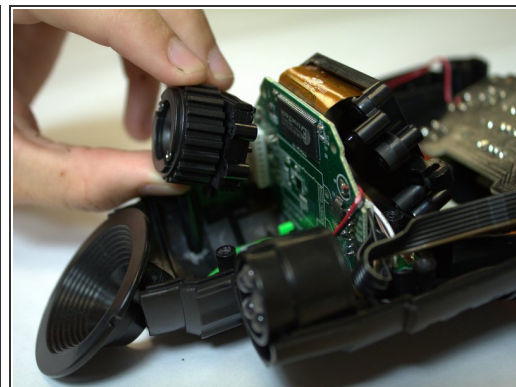
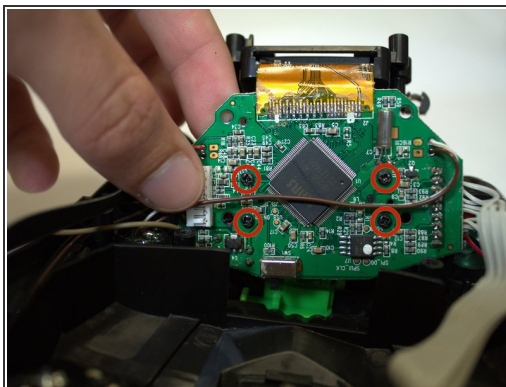
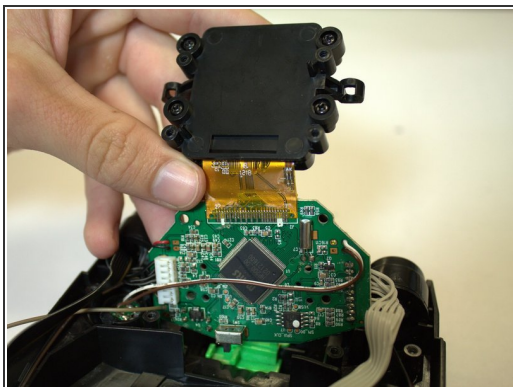
- Remove the two black Phillips #0 screws that hold down the camera & display screen assembly.
 - Pull the camera & display screen assembly up from its slot in the device.
- ⚠ Be careful not to put too much tension on the various wires.

Step 6 — Detach the Screen Assembly



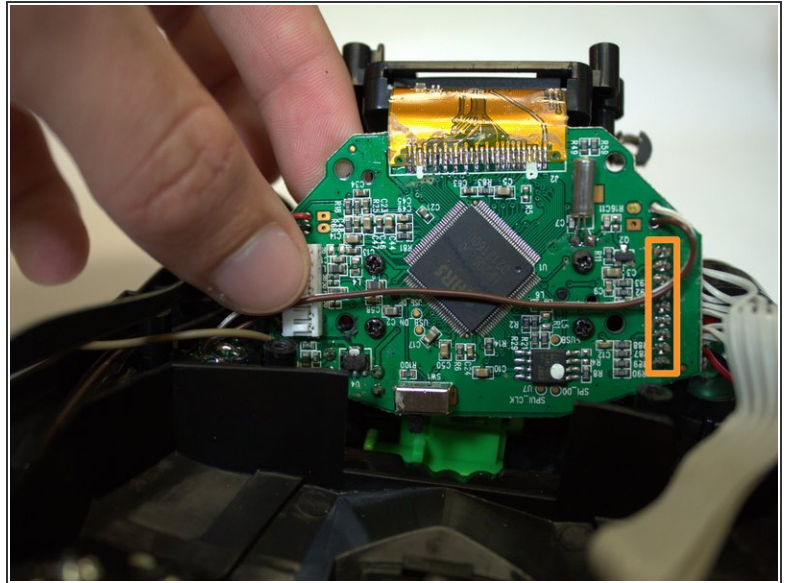
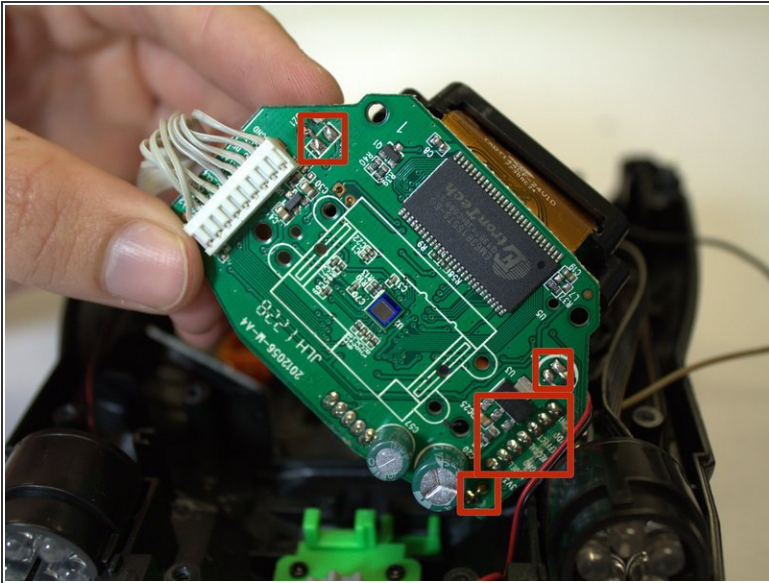
- Remove the four black 7.2 mm Phillips #0 screws that hold the screen assembly in place.

Step 7 — Remove the Lens & Filter Assembly



- Turn the device around to the other side and lift up the screen assembly.
- Remove the four black 7.2 mm Phillips #00 screws that hold the lens & filter assembly in place.
- Pull the lens & filter assembly away from the circuit board.

Step 8 — Detach the Wires



- Using the soldering iron, de-solder the various wires from the front and back of the circuit board.
 - There are three pairs of wires on the front side, along with a set of 7 leads for the main circuit board connector.
 - On the back side, there is a set of 9 leads for the microSD card connector.
- ⓘ Check out [This Guide](#) for tips on soldering and de-soldering.

To reassemble your device, follow these instructions in reverse order.