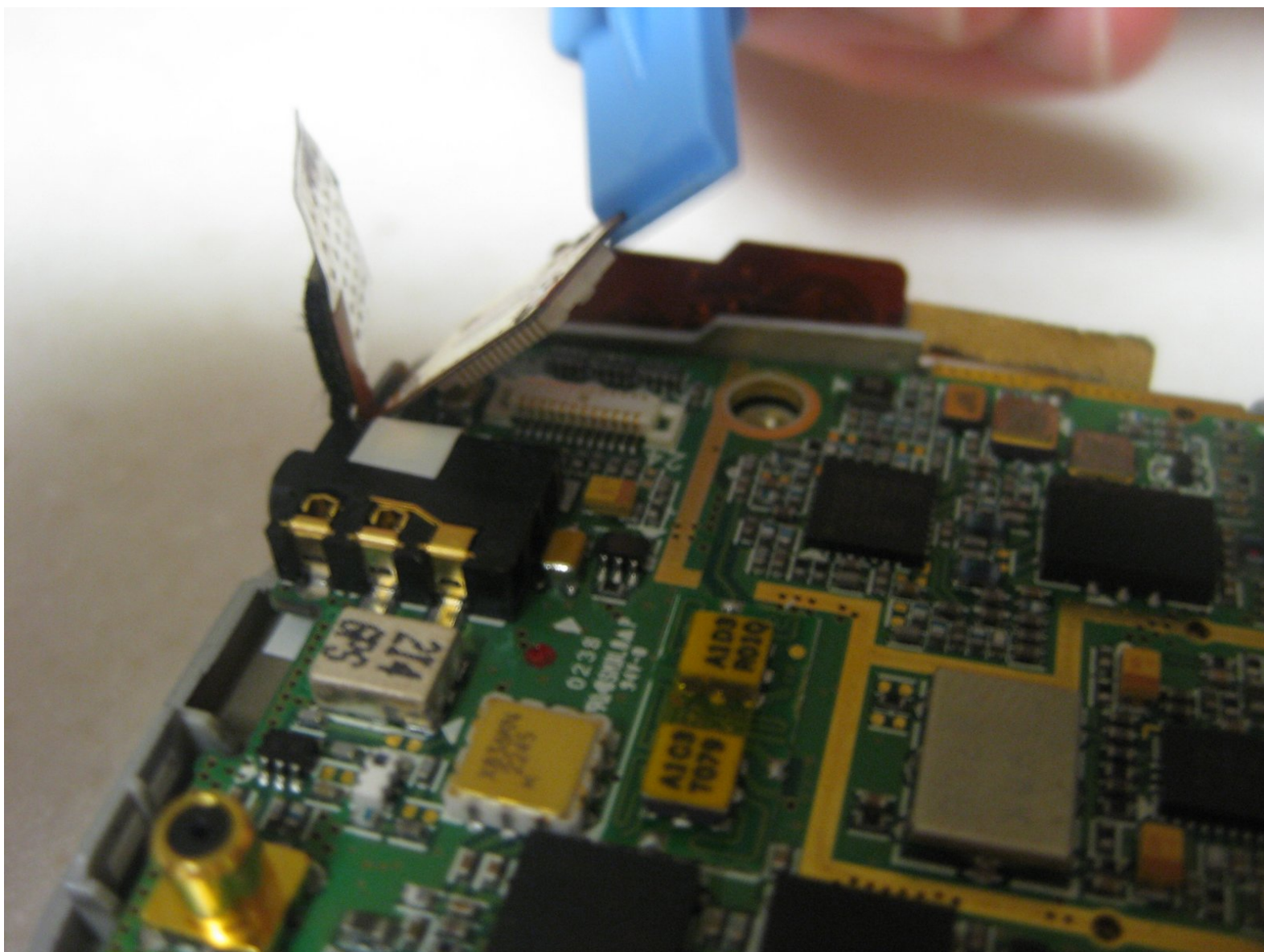




Samsung SPH-A500 Logic Board Replacement

Replacing the Samsung SPH-A500 logic board.

Written By: Nick Dominikovic



INTRODUCTION

This is a step by step guide on how to replace the Samsung SPH-A500 logic board.



TOOLS:

- [Phillips #0 Screwdriver](#) (1)
-

Step 1 — Logic Board



- Turn phone over
- Push the gray tab above the battery forward to remove the battery.

Step 2



- Remove the battery from the phone, which will reveal four screws at the corners of the phone.

Step 3



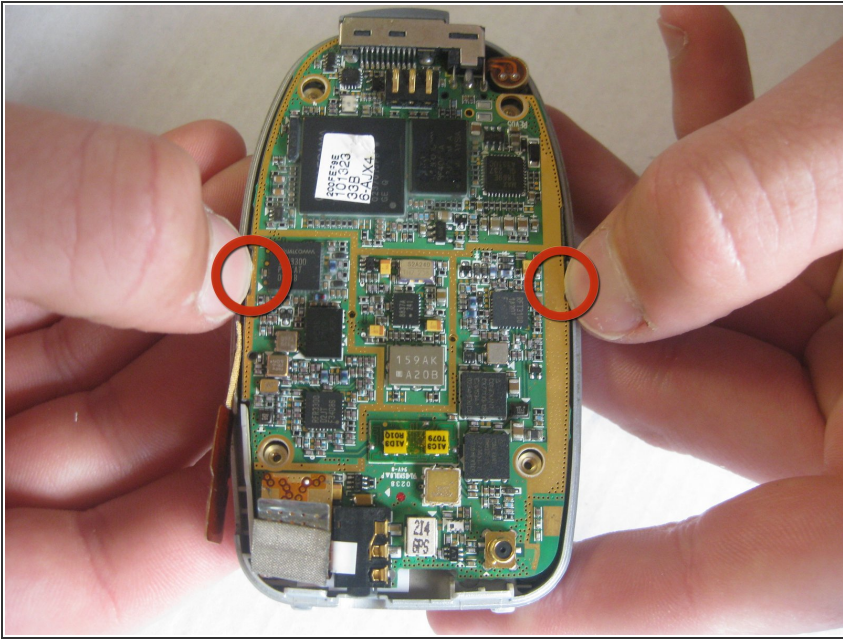
- Remove all four screws using a small Philips screwdriver.
- ⓘ Note: The screws do not need to be completely removed from the case, as long as they are unscrewed.

Step 4



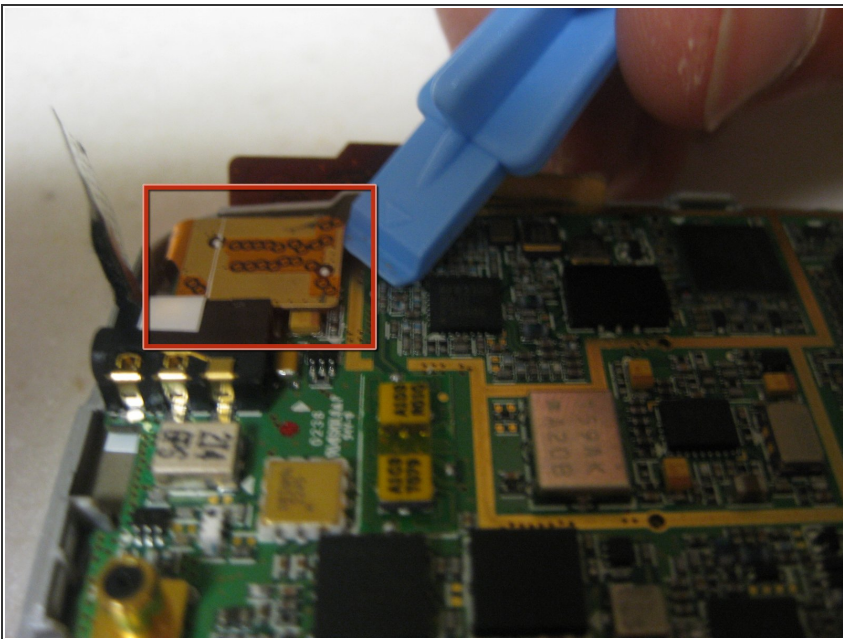
- Remove back cover by carefully prying it open.
- ⓘ Note: Some force may be required.

Step 5



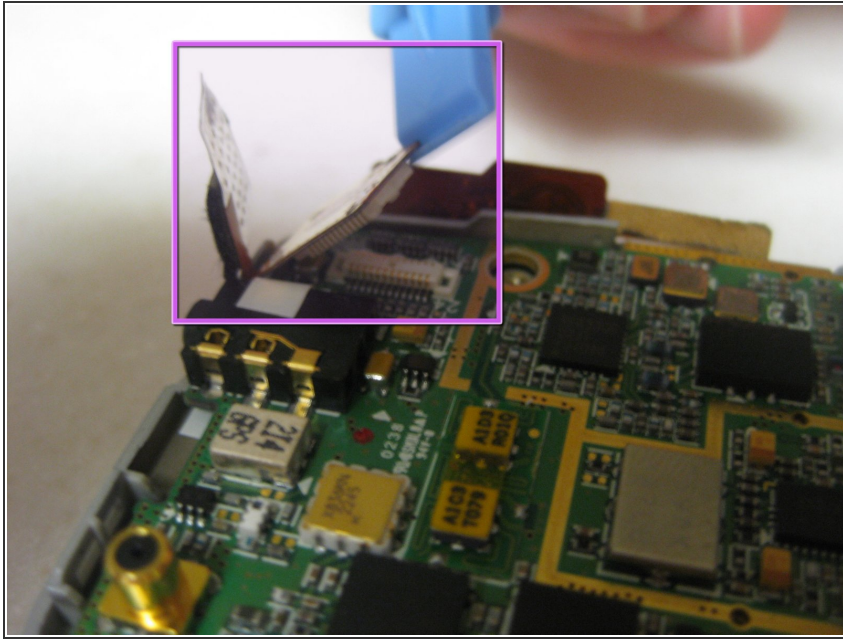
- Pull the side tabs outward while simultaneously lifting up the circuit board.
- ⚠ Do not completely pull out the circuit board.

Step 6



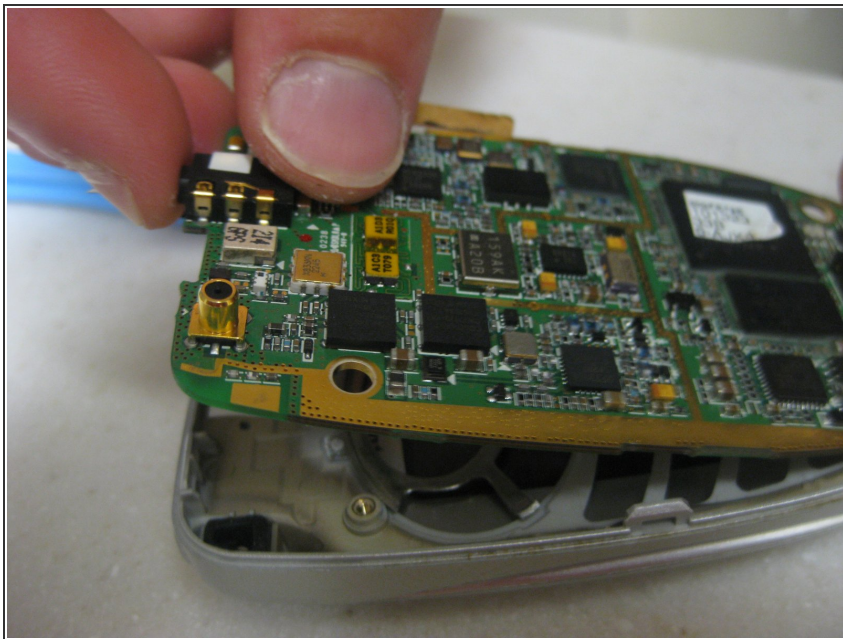
- Look for the clip at the top right corner of the logic board.

Step 7



- Remove the clip from the logic board.

Step 8



- Remove the logic board.
- Replace the broken logic board with a new one.

To reassemble your device, follow these instructions in reverse order.