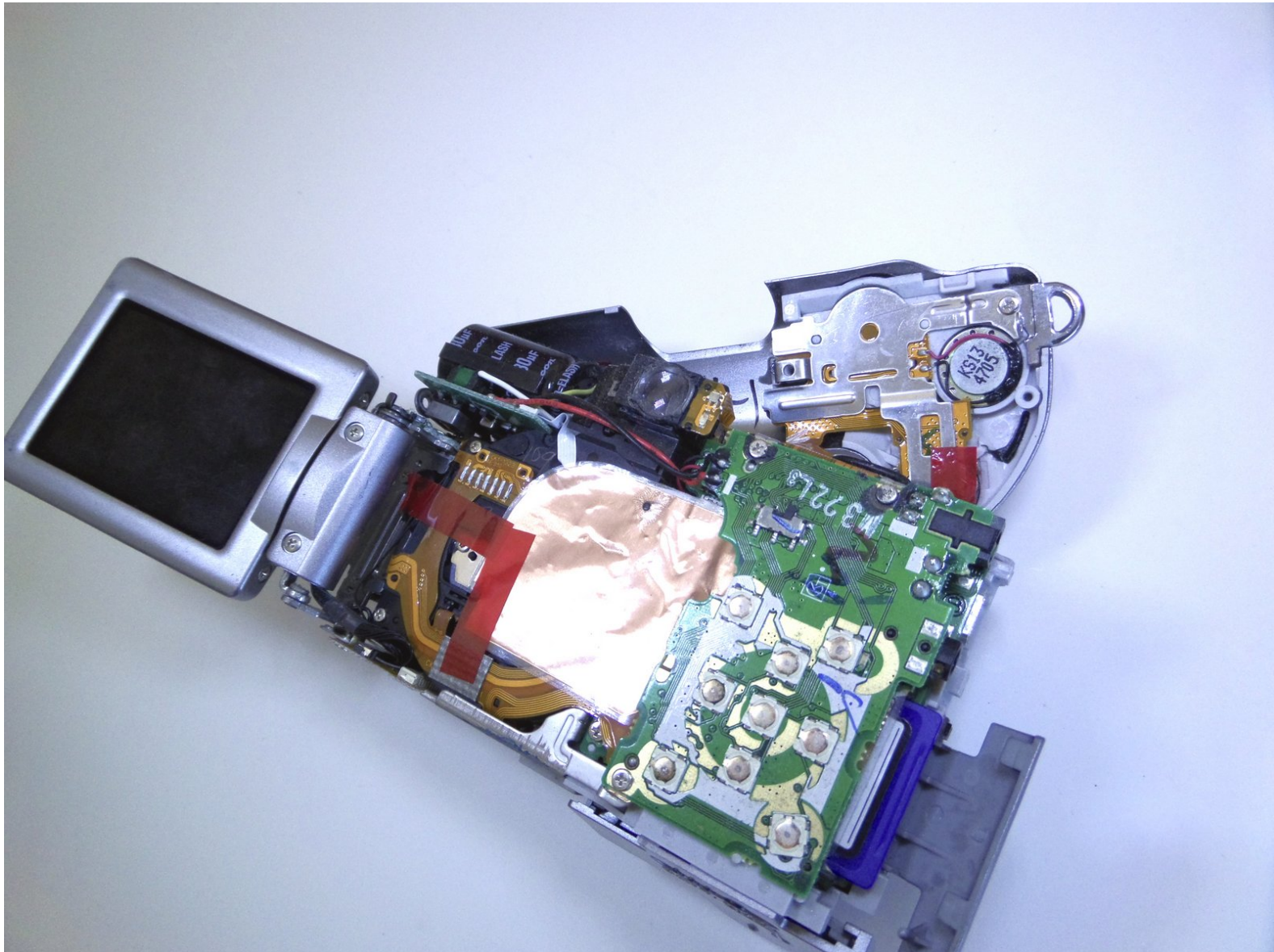




Canon PowerShot A620 Shutter Button Replacement

Removal of shutter button.

Written By: Jaime Abraham

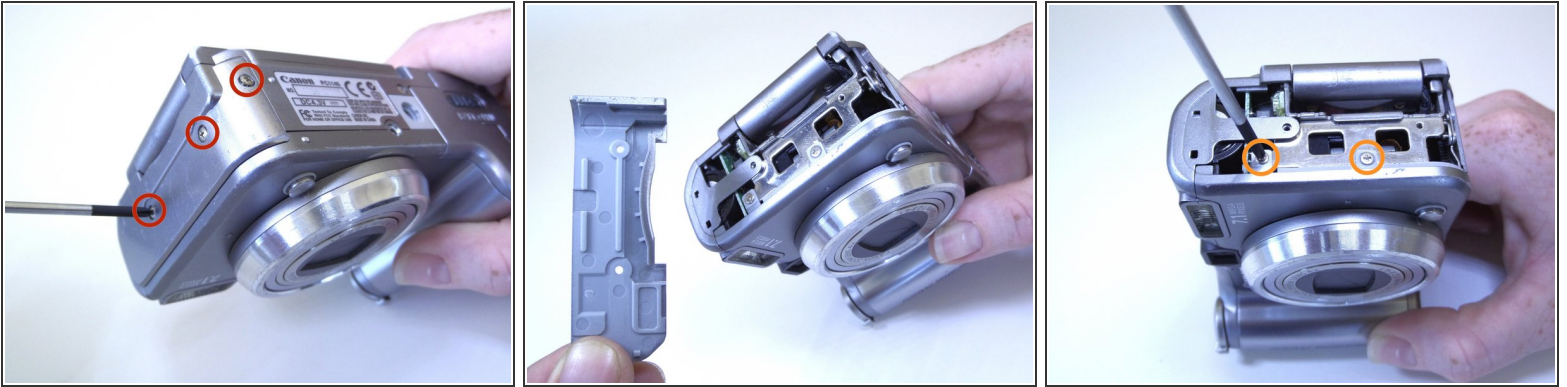




TOOLS:

- [Phillips #00 Screwdriver](#) (1)
-

Step 1 — Side Panel



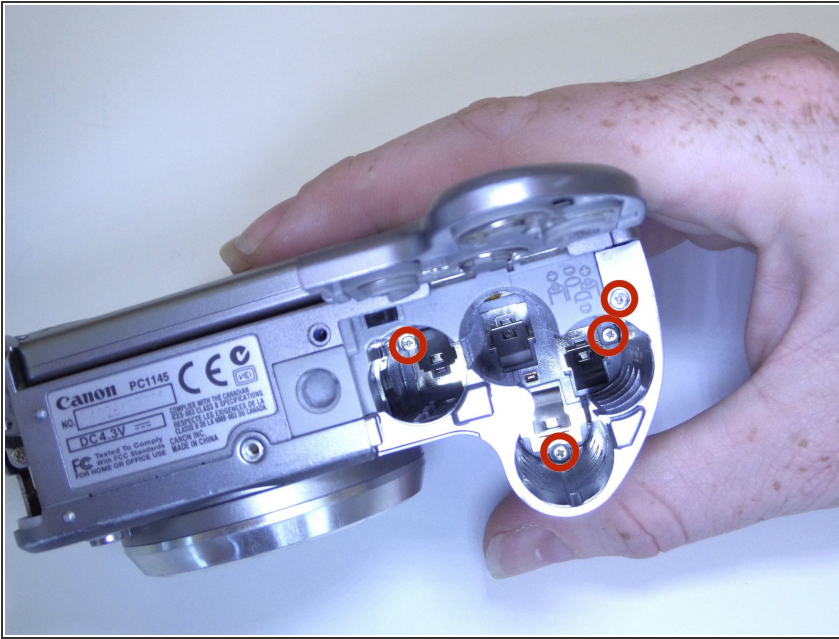
- Unscrew the three Phillips #00 1.6x3mm screws on the side.
- Lift loose panel from the case.
- Unscrew the two Phillips #00 1.6x3mm screws that were previously hidden beneath the panel.

Step 2 — Bottom Panel



- Unscrew the two Phillips #00 1.6x3mm screws on the bottom panel.

Step 3 — Battery Compartment



- Open the battery door.
- Unscrew the four Phillips #00 1.6x3mm screws in the battery compartment.

Step 4 — Terminal Cover



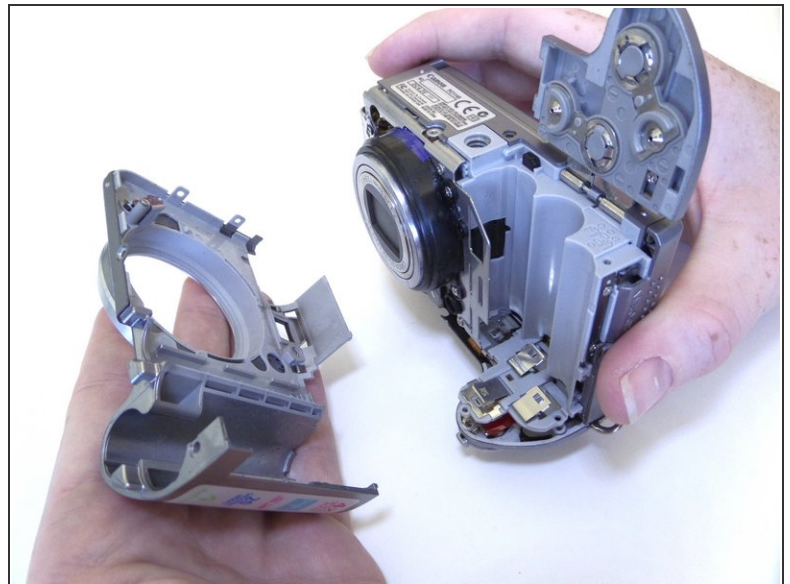
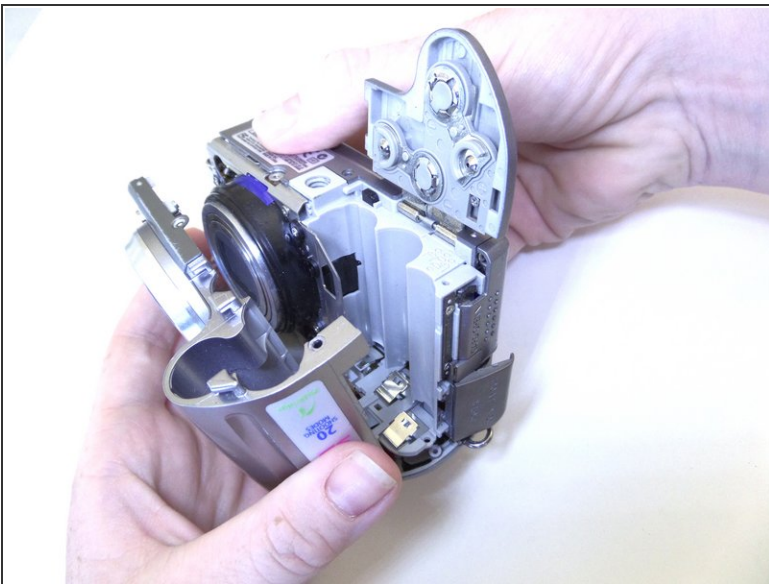
- Lift the terminal cover on the side of the camera.
- Unscrew the three Phillips #00 1.6x3mm screws beneath the terminal cover.

Step 5 — Top Panel



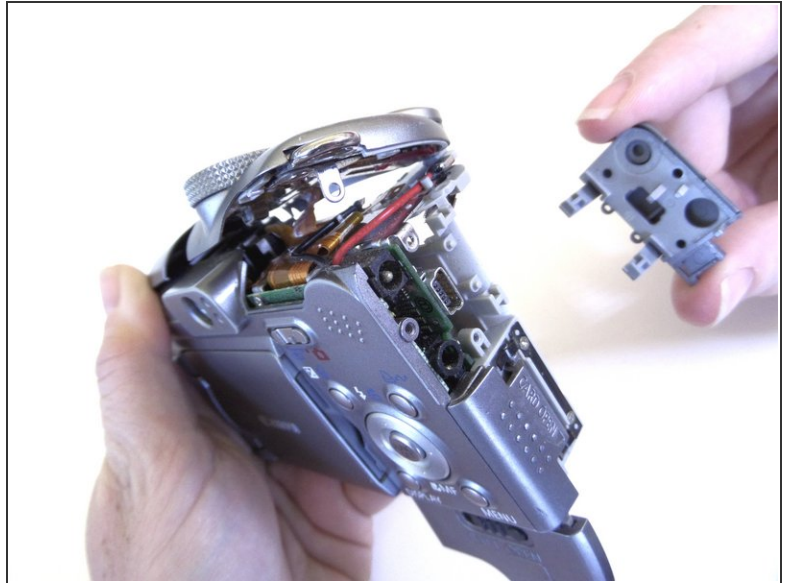
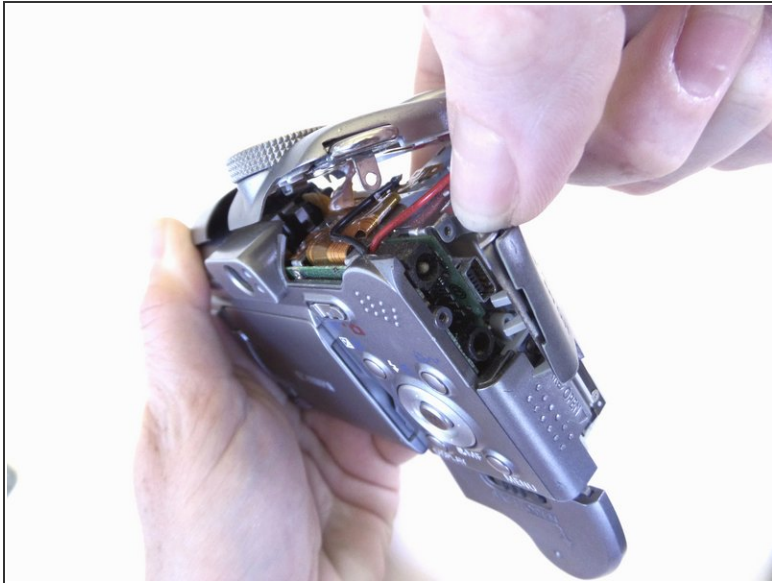
- Gently pull the top panel to separate it from the case.
- ⓘ Although the top panel will now be free from the rest of the case, it will still be attached to the camera by a ribbon cable.

Step 6 — Front Panel



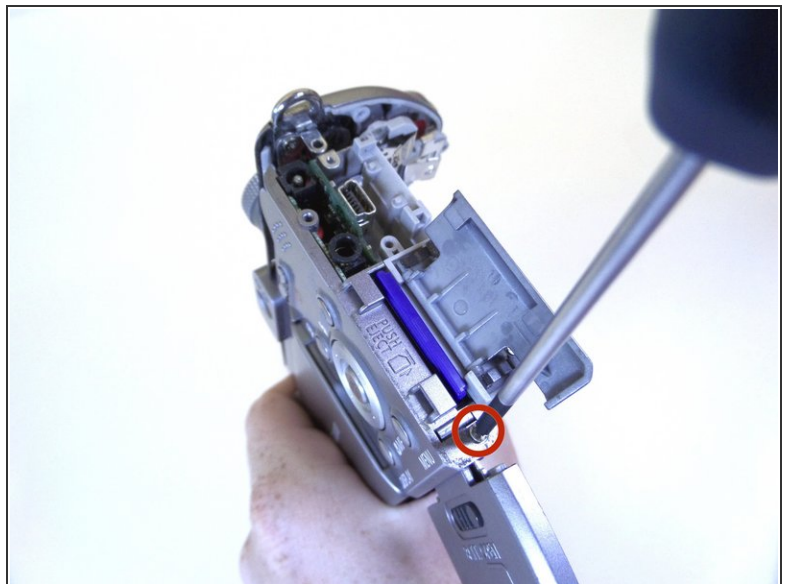
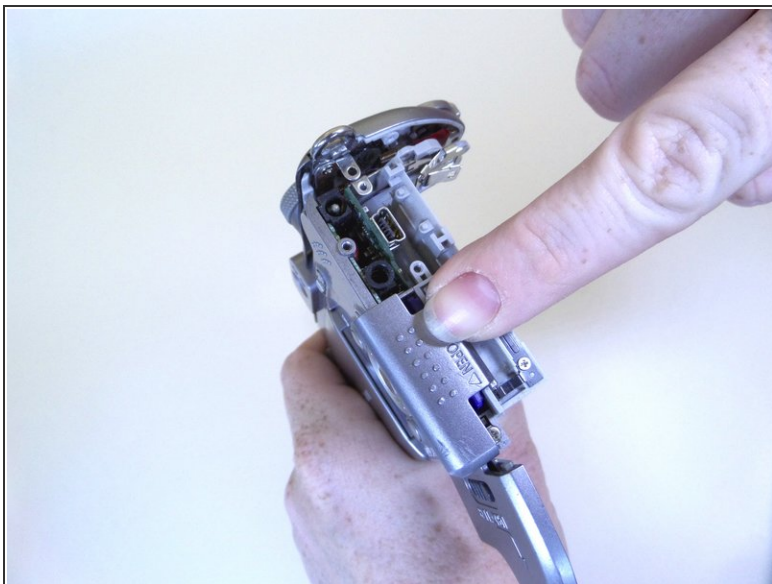
- Gently pull the front panel to separate it from the camera.
- ⓘ The battery terminals are easy to access from this step.

Step 7 — Terminal Cover



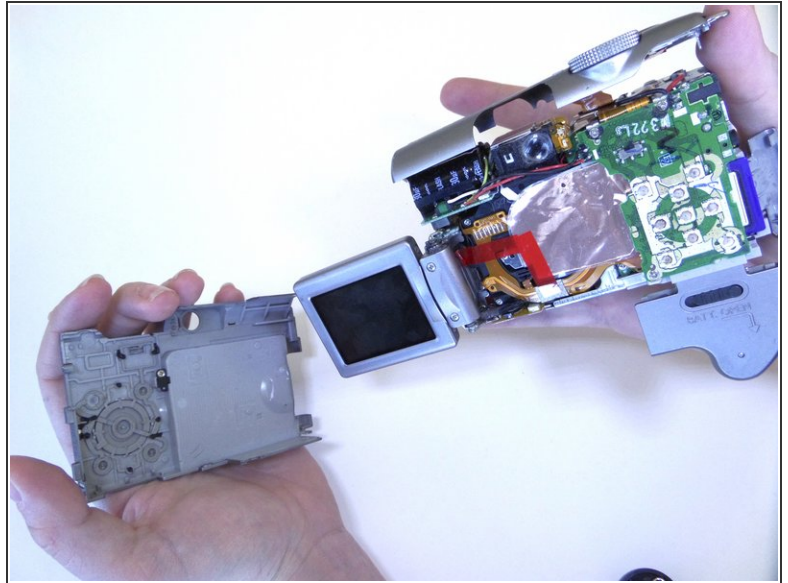
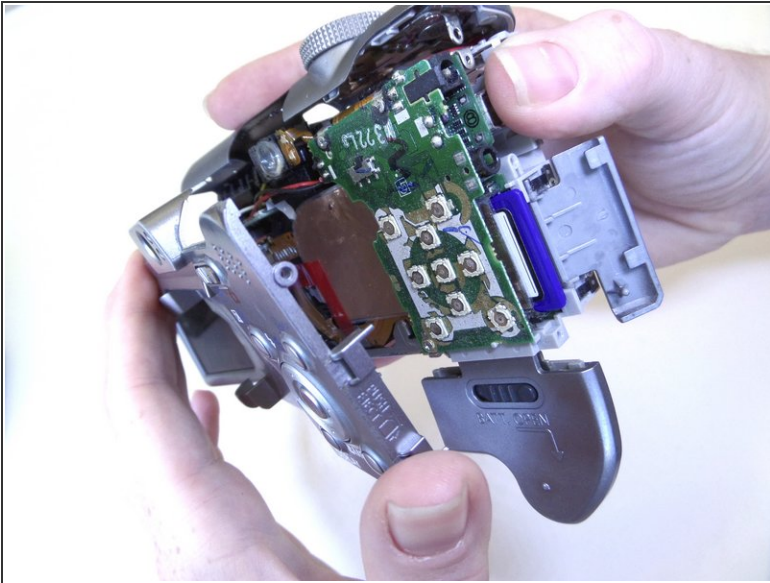
- Gently pull the terminal cover to separate it from the camera.

Step 8 — Memory Card Cover



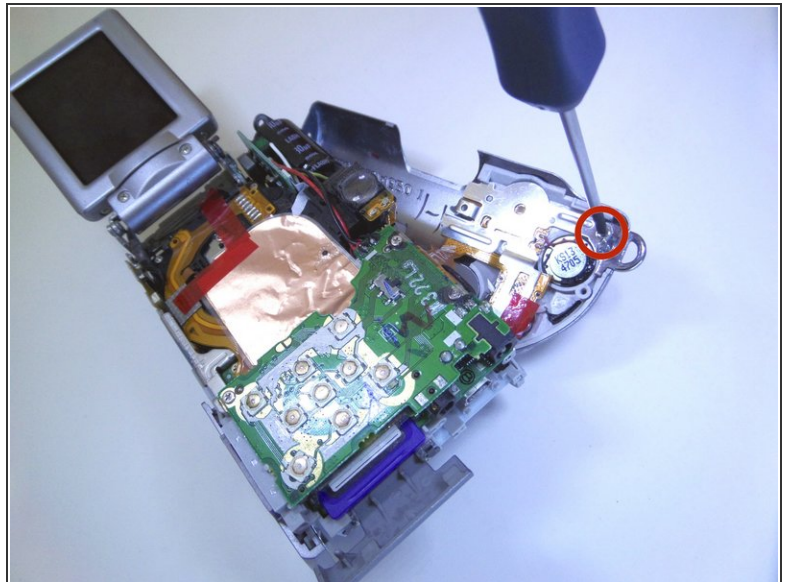
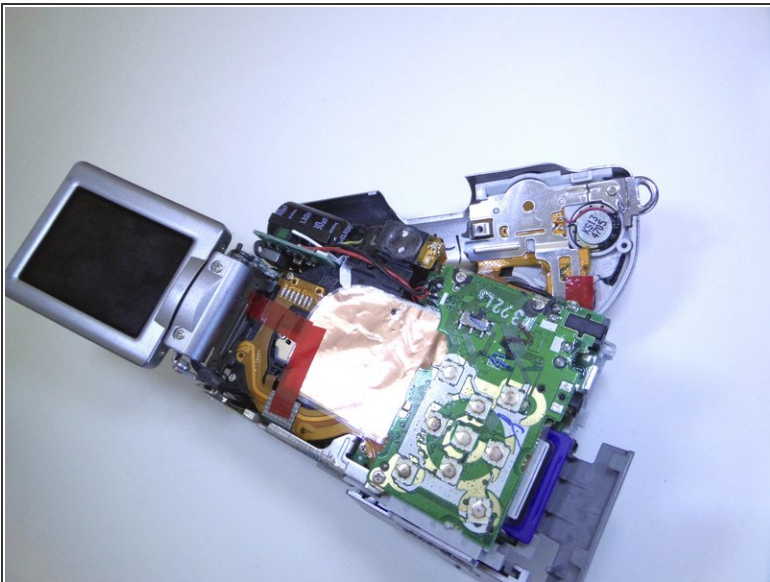
- Slide the memory card cover down.
- Unscrew the Phillips #00 1.6x3mm screw beneath the memory card cover.

Step 9 — Back Panel



- Gently pull the back panel to separate it from the camera.

Step 10 — Metal Plate Screws



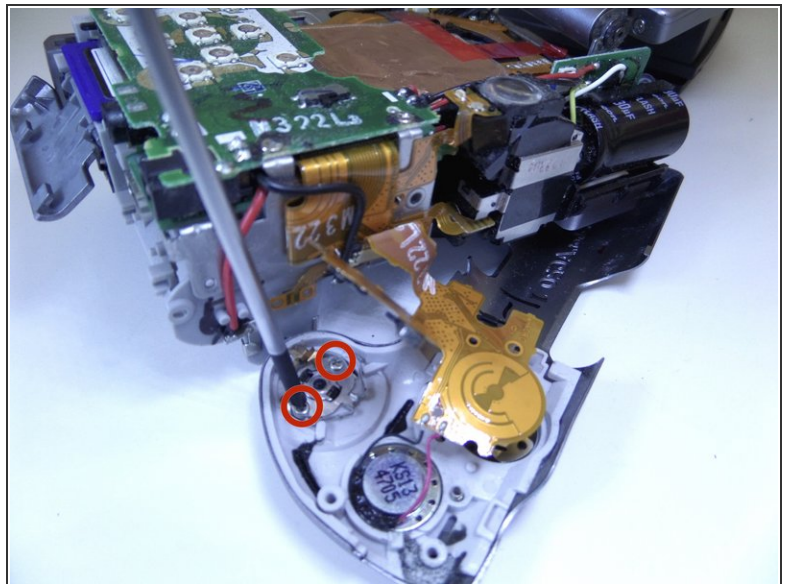
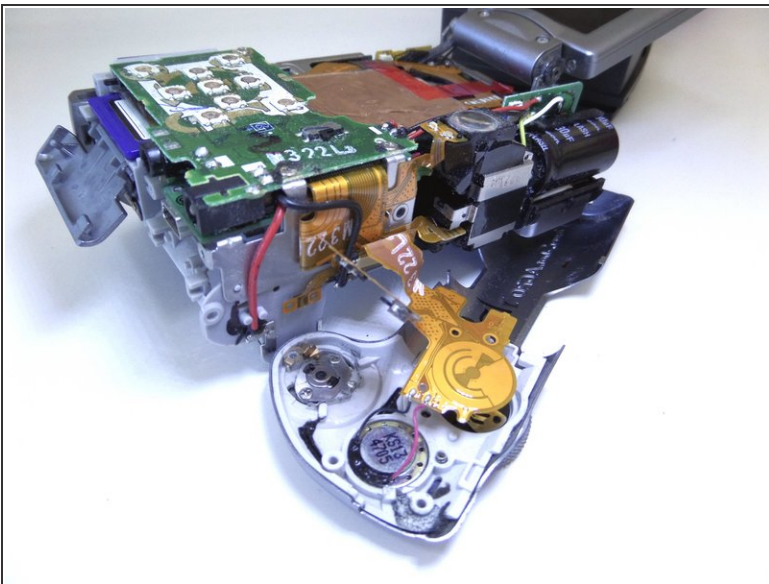
- Unscrew the Phillips #00 1.6x3mm screw located on the top panel.

Step 11 — Metal Plate



- Gently lift the metal plate and move it to the side.

Step 12 — Trigger Button Screws



- Unscrew the two Phillips #00 1.6x3mm screws that hold in the trigger button.

Step 13 — Trigger Button



- The trigger button will fall off once the screws have been removed.

To reassemble your device, follow these instructions in reverse order.