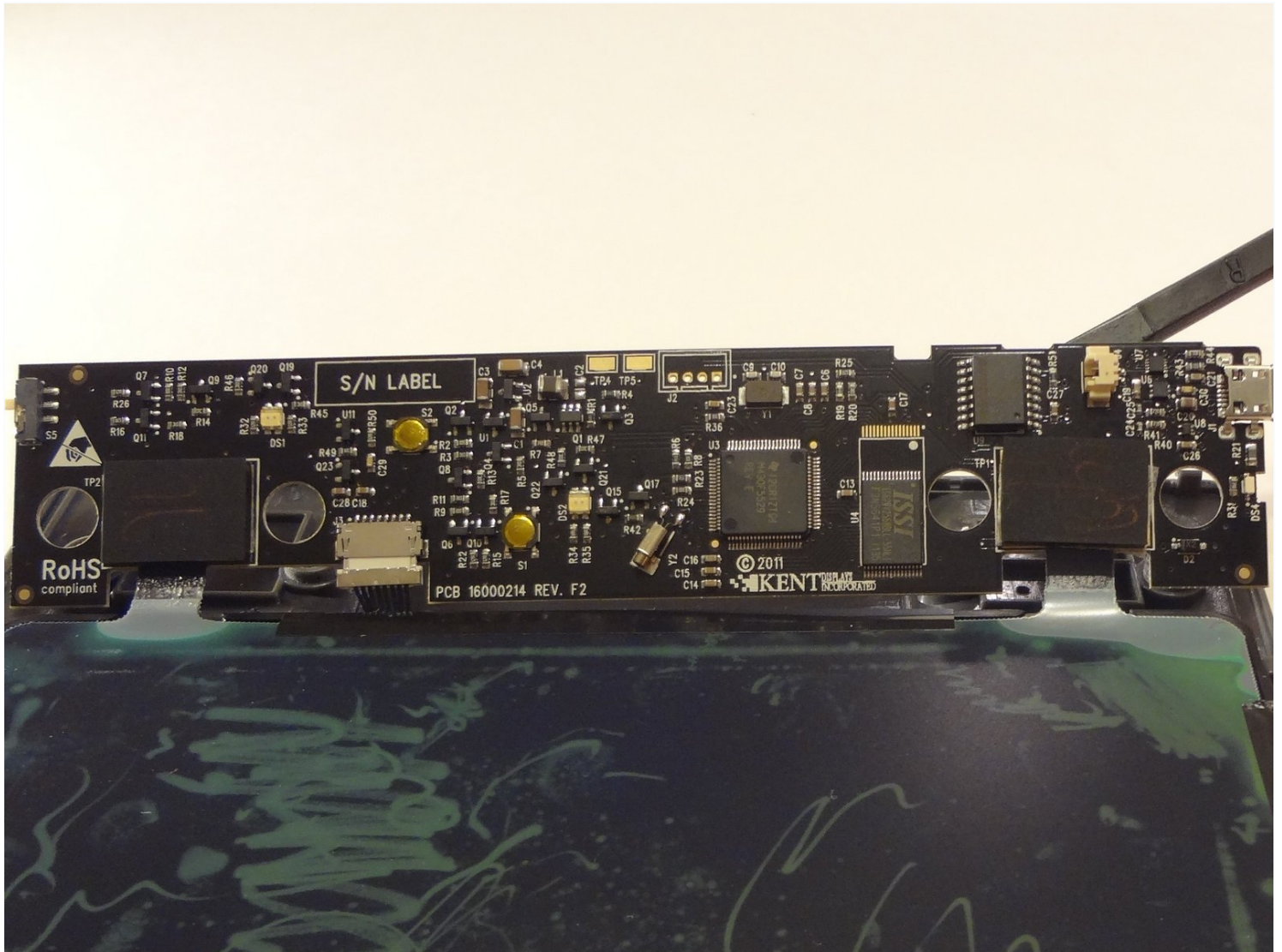




Boogie Board Rip Copper Button Plate Replacement

This guide will provide the steps to access the...

Written By: Gareth



INTRODUCTION

This guide will provide the steps to access the internal components including the motherboard where the copper button plates are located.

TOOLS:

[Tweezers](#) (1)
[Spudger](#) (1)
[iFixit Opening Picks \(Set of 6\)](#) (1)
[64 Bit Driver Kit](#) (1)

Step 1 — Accessing the internal components



- On the back of the device, remove the four 3/8" Torx head screws using the T-6 Torx bit.
- ① A Torx bit is the piece that is inserted into a bit driver, also known as a screw driver.

Step 2



- Remove the stylus if it is in the housing at the top of the device.
- Turn the device so you are looking at it from the top down.
- Using your thumbs on each wall of the stylus housing, open the frame of the device by gently pulling the two sides apart.

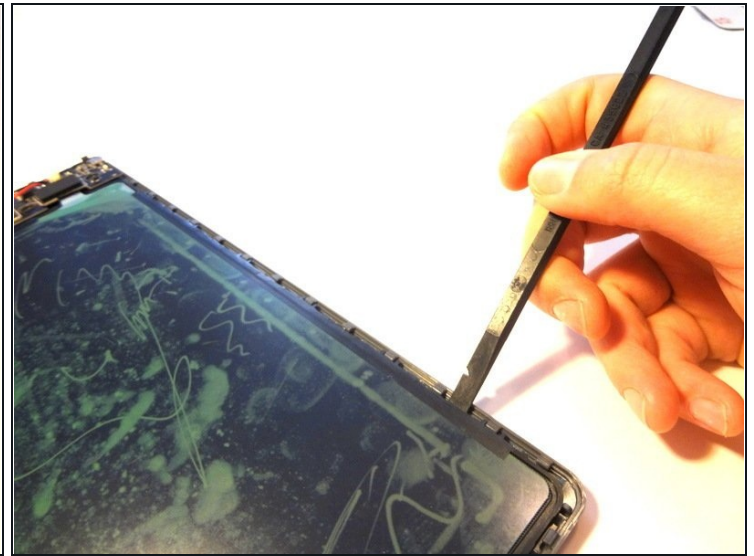
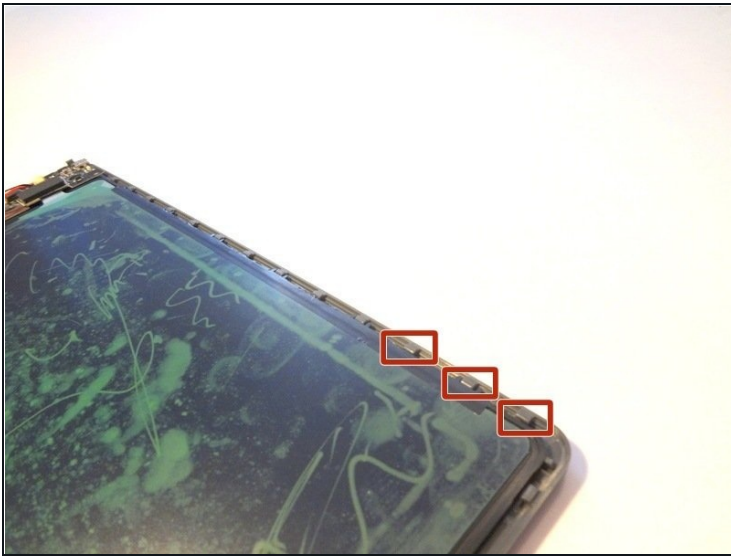
Step 3



- Insert a spudger into the seam between the front and back plates of the frame. Unsnap the snaps around the entire frame of the device.
- Remove the front face plate by pulling it straight up.

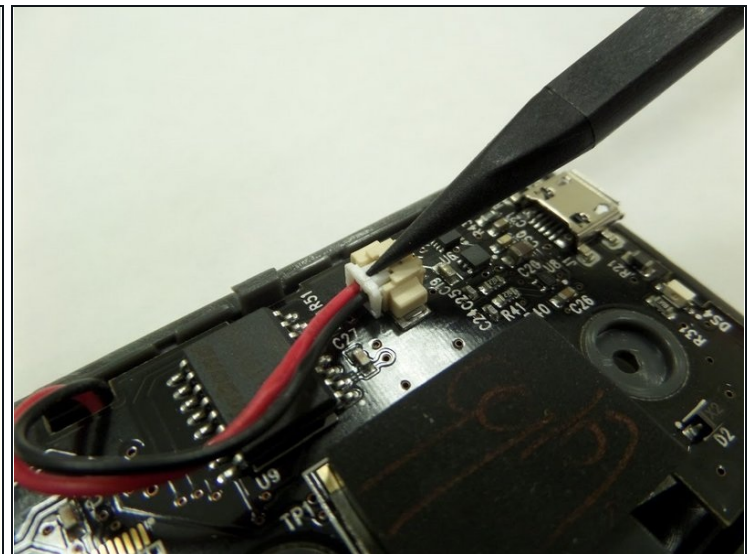
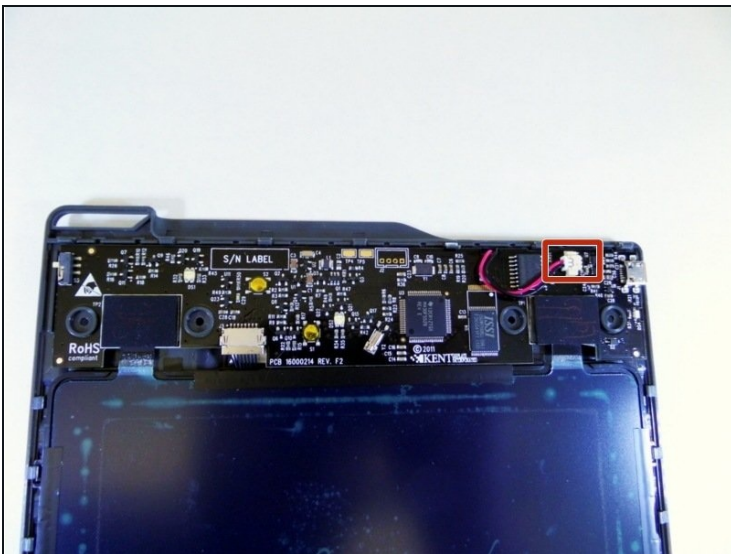
⚠ The unlock switch on the device's side might come off while undoing the internal snaps or removing the face plate. This is perfectly normal.

Step 4



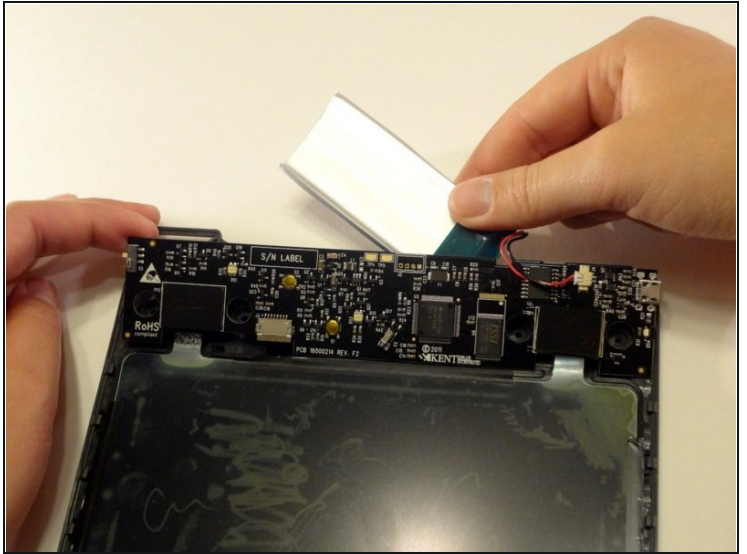
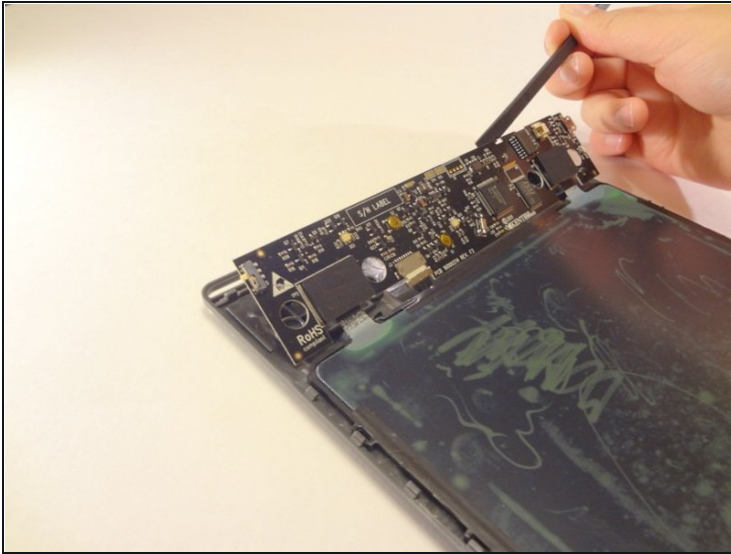
- Use a spudger (or gently bend the back plate of the device) to unsnap the snaps holding the screen in place.

Step 5



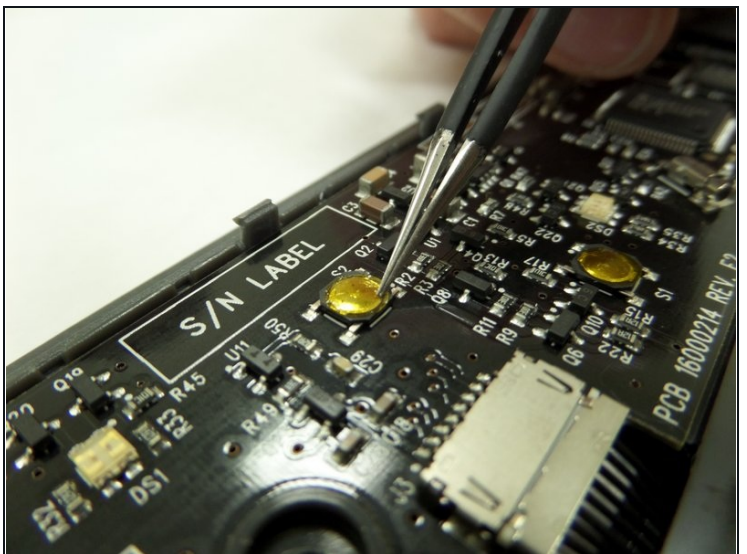
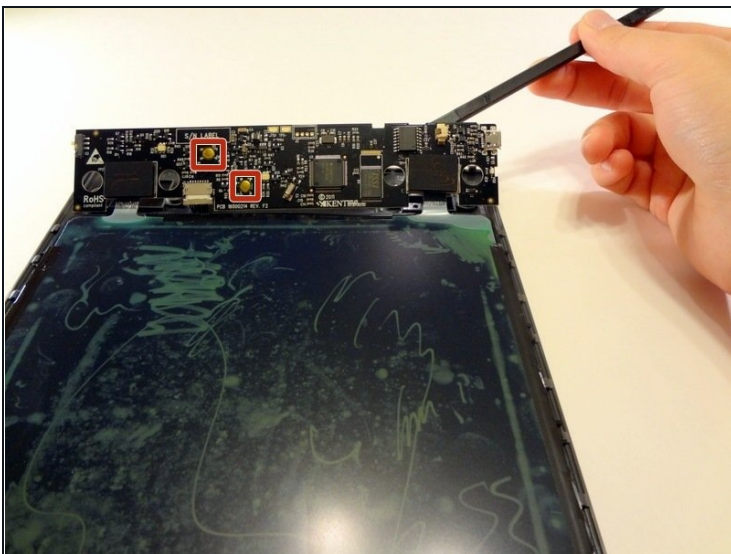
- With a spudger, press against the lip of the connector closest to the wires to remove the battery connector from the motherboard.

Step 6



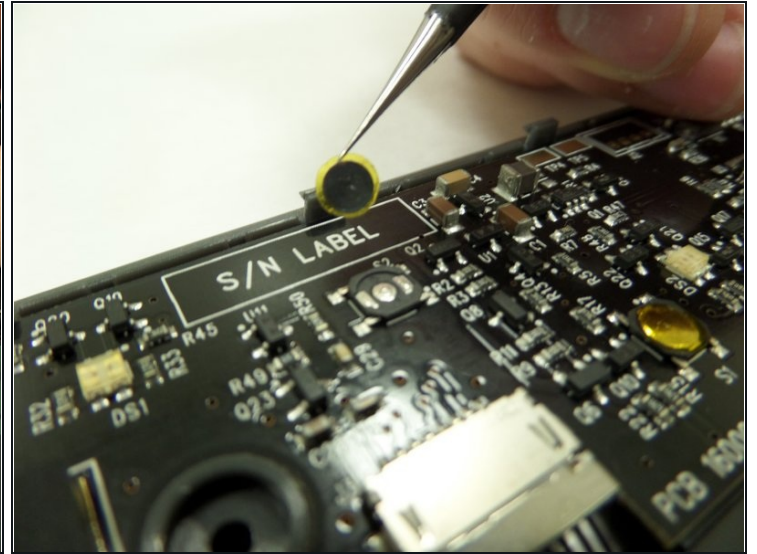
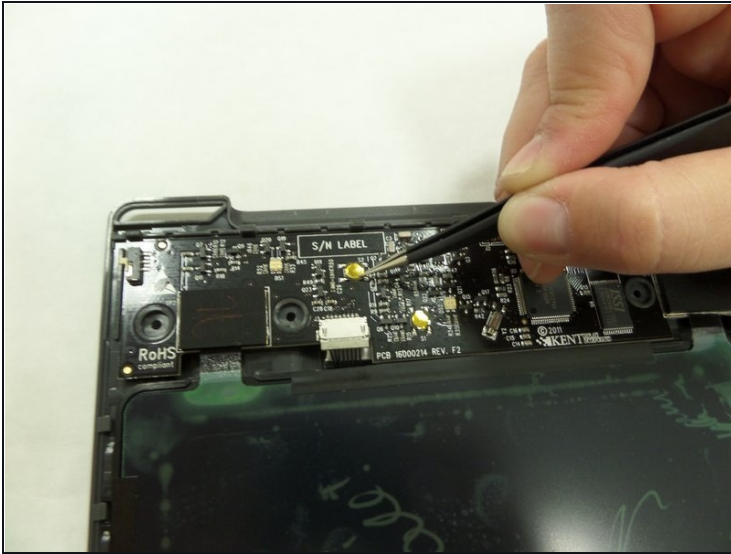
- Gently lift the motherboard with a spudger or small object by inserting it in the seam between the back frame and the motherboard.
- Remove the battery hidden behind the motherboard.

Step 7 — Copper Button Plate



- Using [tweezers](#) gently go around the edges of the copper plate to remove the adhesive.

Step 8



- Use tweezers to grip the outer edge of the copper plate and lift the button straight off.

To reassemble your device, follow these instructions in reverse order.