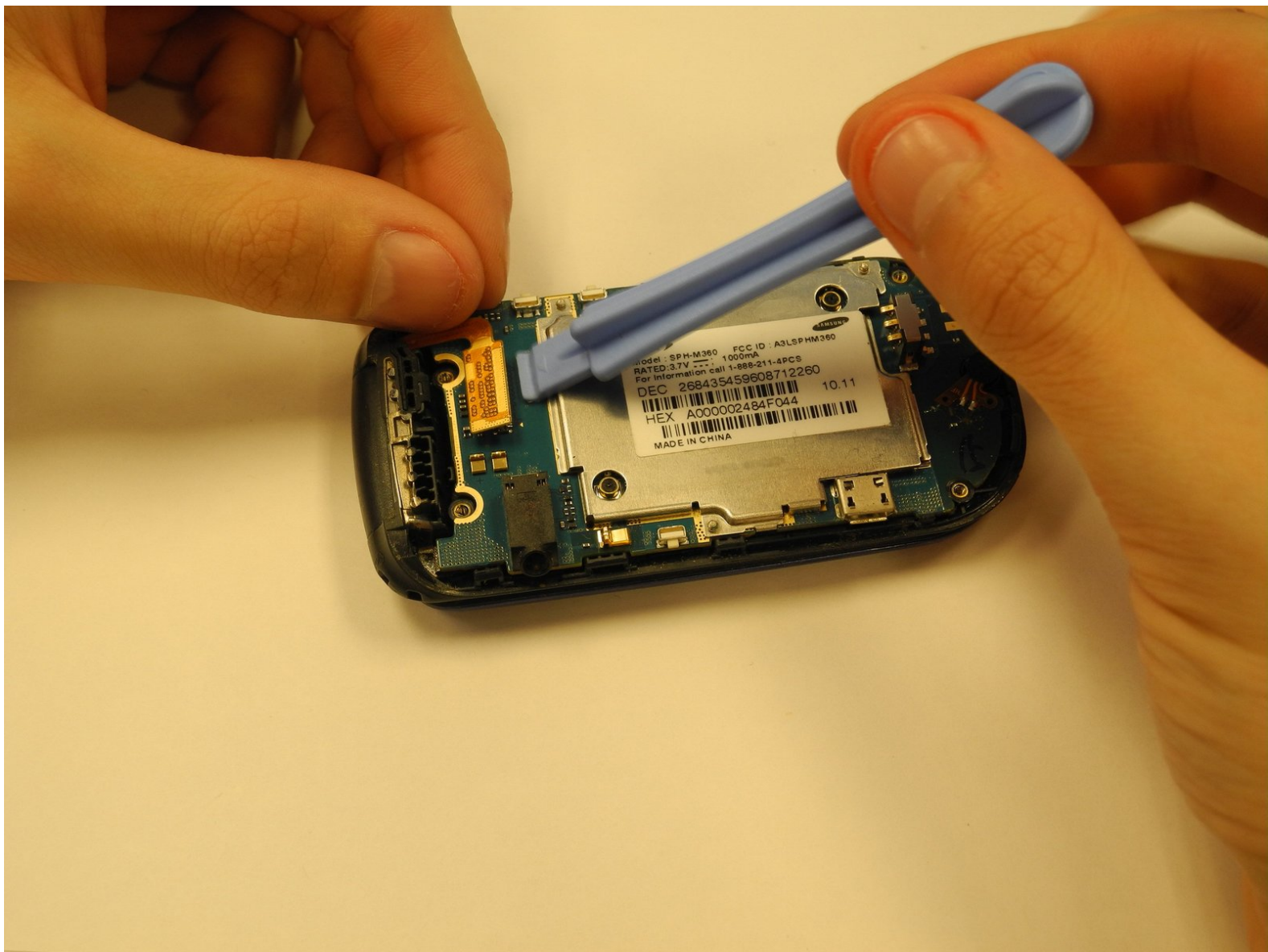




Samsung SPH-M360 Logic Board Replacement

Step-by-step instructions detailing how to replace a logic board for a Samsung SPH-M360 cell phone.

Written By: Lauryn Bone



INTRODUCTION

After removing the back of the case, the logic board takes only three steps to lift from the device.



TOOLS:

- [iFixit Opening Tools](#) (1)
 - [Phillips #00 Screwdriver](#) (1)
-

Step 1 — Remove the back battery panel from the phone.



- Detach the battery cover by sliding the cover down toward the bottom of the phone.
- ⚠ Slide back cover in direction of arrow.
- Lift up on the battery cover to complete cover removal.

Step 2 — Remove the battery.



- Remove battery by lifting up in the corner of the battery.
- ⚠ Use the semi-circle provided in order to gain access to the battery.
- ⓘ Battery will come out at an angle. This does not require force.

Step 3 — Unscrew the case



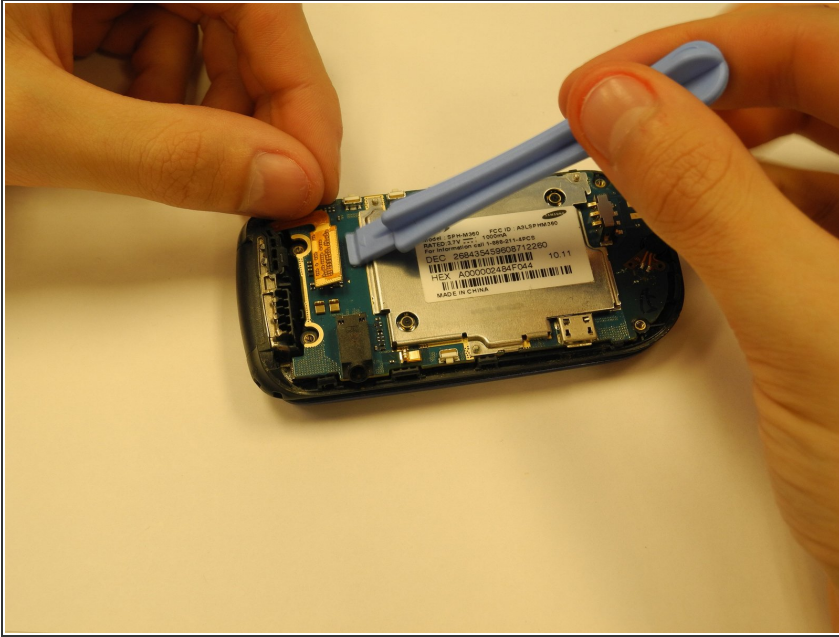
- Use a phillips head (PH) #00 screwdriver to remove four screws connecting the two halves of the case.
- ⓘ Note: keep the screws in a safe location, where they will not be lost until needed for reassembly.

Step 4 — Remove the back half of the case.



- Using your plastic opening tool, pry under the back case starting with the top as marked by red circle.
- ⚠ There is a small clip at the top of the phone that must be released in order to remove the back case.
- The volume button and camera button are held in by the back case. Volume button pictured. Camera button opposite.
- **REASSEMBLY ONLY:** Replace volume and camera buttons in place. Then, insert the top of the back case FIRST and squeeze together clips as you work toward the bottom of the phone.


Step 5 — Lift the ribbon at the top right of the logic board.



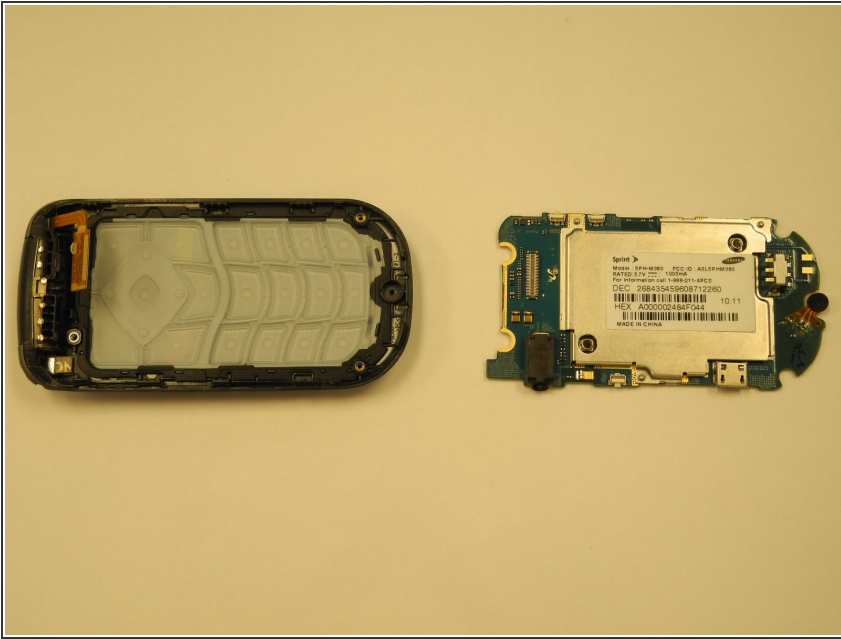
- Locate the ribbon at the top right of the logic board.
- Use the opening tool to lift the ribbon away from the logic board. (Note: the ribbon should lift easily. Try not to use too much force.)
- The ribbon will remain attached to the top of the case.
- During reassembly align the gold teeth, and the black plastic ends. Then gently push on the top of the gold ribbon until it lightly clicks in place.

Step 6 — Remove the logic board



- Place the plastic opening tool under the logic board.
 - Using one hand to stabilize the device, use the tool to lift the logic board away from the plastic case. If the board doesn't come up easily, try not to force it as the board may break. Instead, apply even pressure to lift it away gently from the casing. You will need to gently lift at 2-3 locations around the board.
-  During reassembly, gently push on 2-4 locations with your fingers until the board clicks into place.

Step 7 — Place the logic board in a safe place



- If intending to reuse the logic board, be sure to place it in a space that minimizes contact with dust and dirt.

To reassemble your device, follow these instructions in reverse order.