



# Samsung NP-RF411 Laptop Maintenance

Cleaning up and maintaining an old Samsung Laptop

Written By: Robbie Steele



---

## INTRODUCTION

Given to us to find out whats happened to the keyboard (Sticky keys), thought it might be helpful to post a guide

---

### TOOLS:

- [Small Phillips Head Screwdriver](#) (1)
- [Spudger](#) (1)

*Used to undo the Ribbon cables*

- [Phillips #2 Screwdriver](#) (1)
-

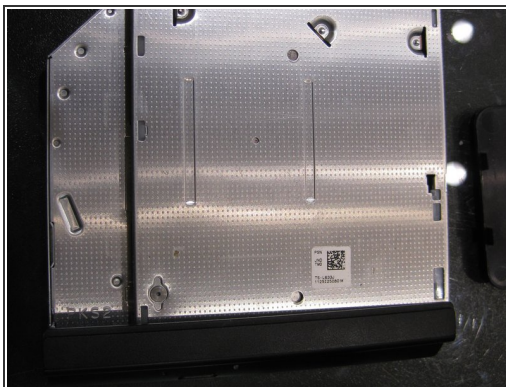
## Step 1 — Laptop



- Quite a simple stage. There are a total of 19 screws to be removed from the bottom of the casing.
  - Three for HDD
  - One for Ram/HDD Cover
  - One for ODD
  - one hidden under a rubber foot at the front of the laptop.
  - Three under the Battery
- Make sure you remove the fake SD Card at the front, because this can stall you.

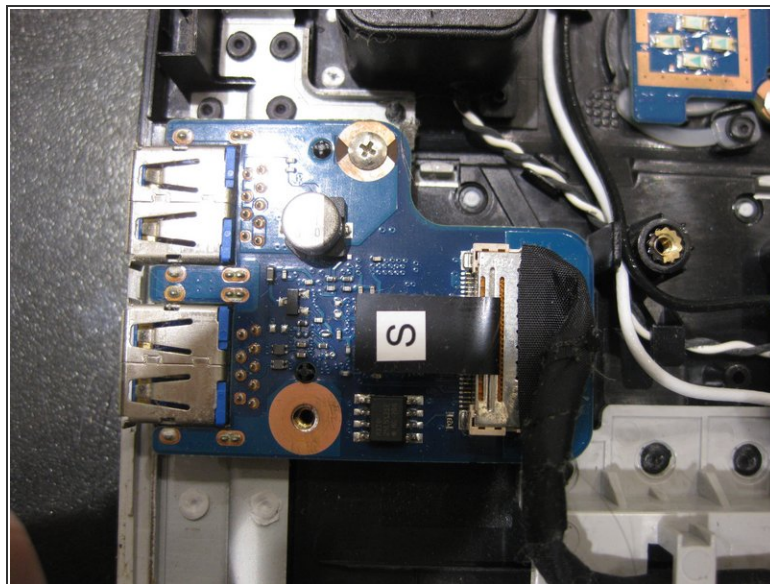
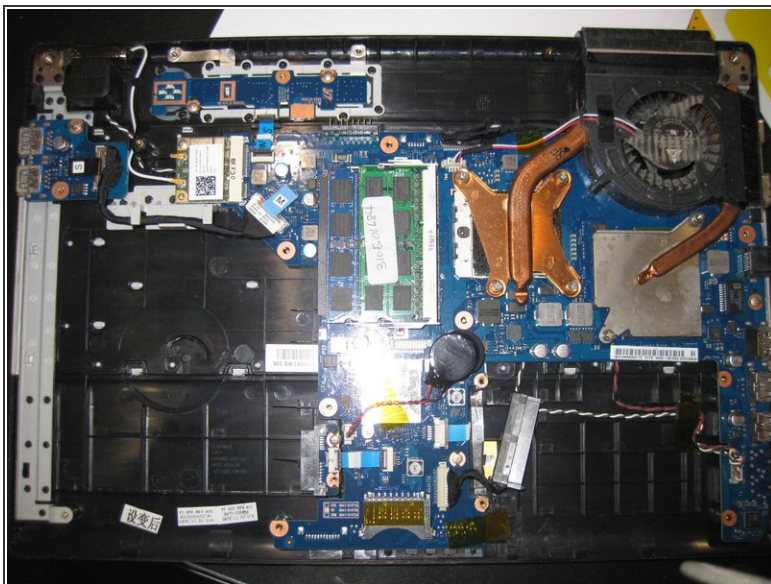


## Step 2



- Once the cover is off, there are three screws holding the main PCB down.
- Screws for the HDD
- Battery. DC 11.1V 57W

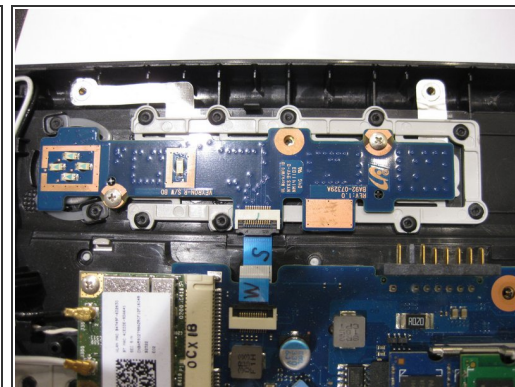
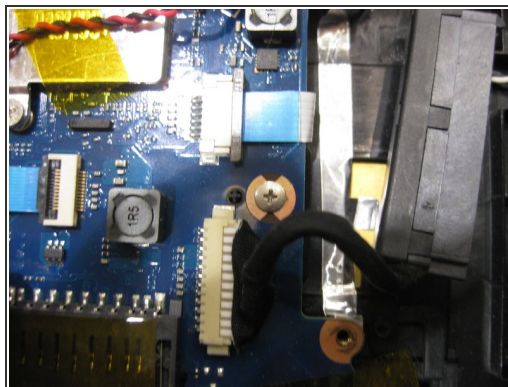
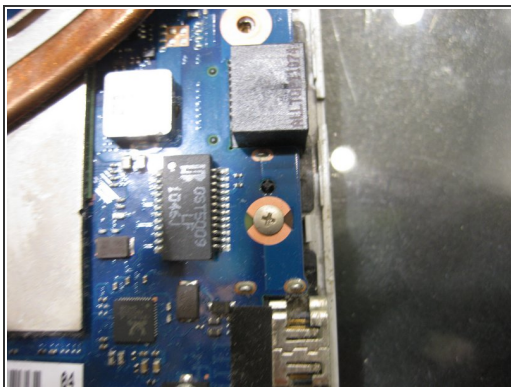
## Step 3



- This shows the main PCB
- USB 3.0 Ports

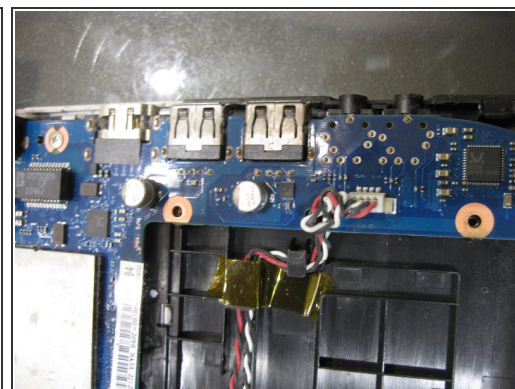
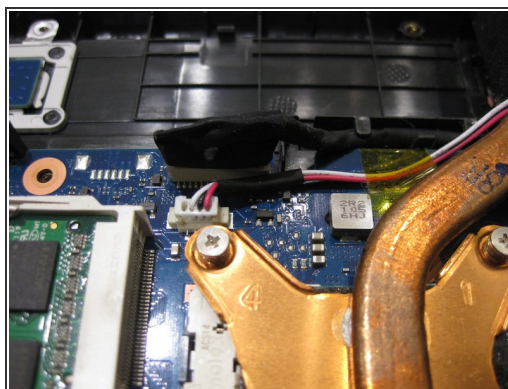


## Step 4



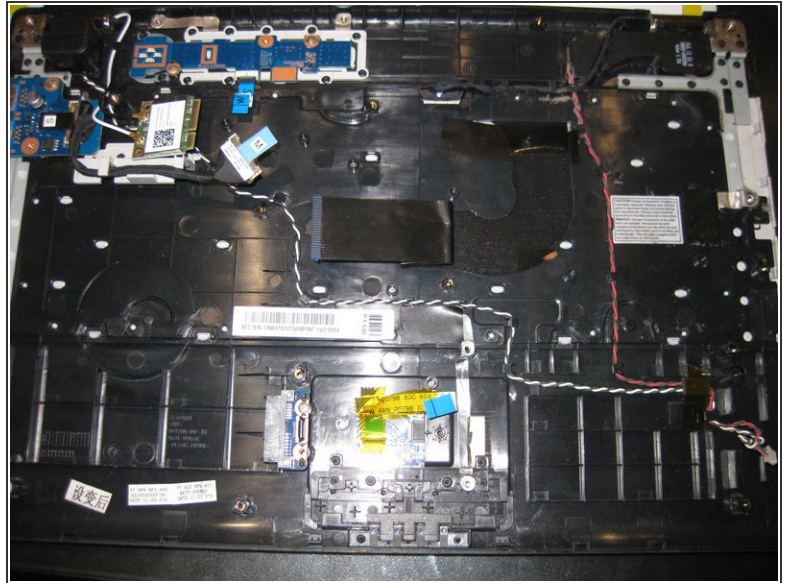
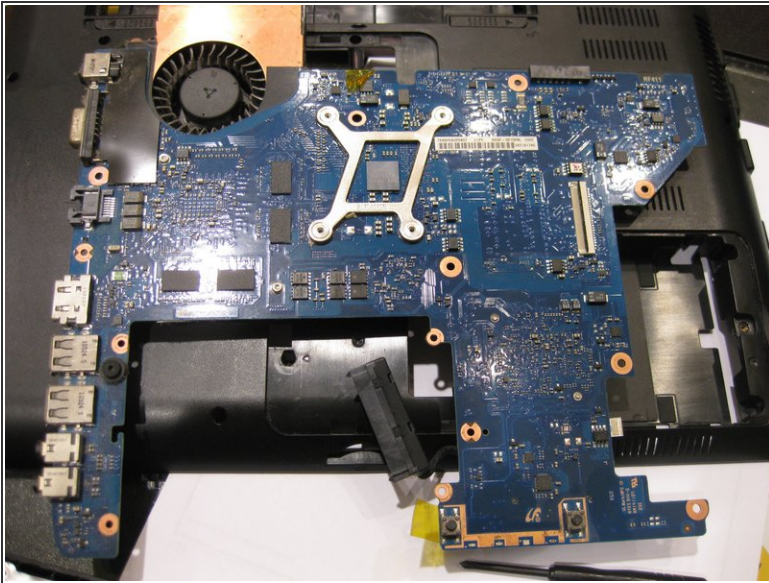
- locations of the main PCB / WIFI card screws.

## Step 5



- removing the Main PCB means detaching the cable marked M, W the big fat black cable at the top and the white connector at the right usb side.

## Step 6



- Here's the underside of the main PCB, all cables detached.
- With the PCB removed this is all you have left.

To reassemble your device, follow these instructions in reverse order.