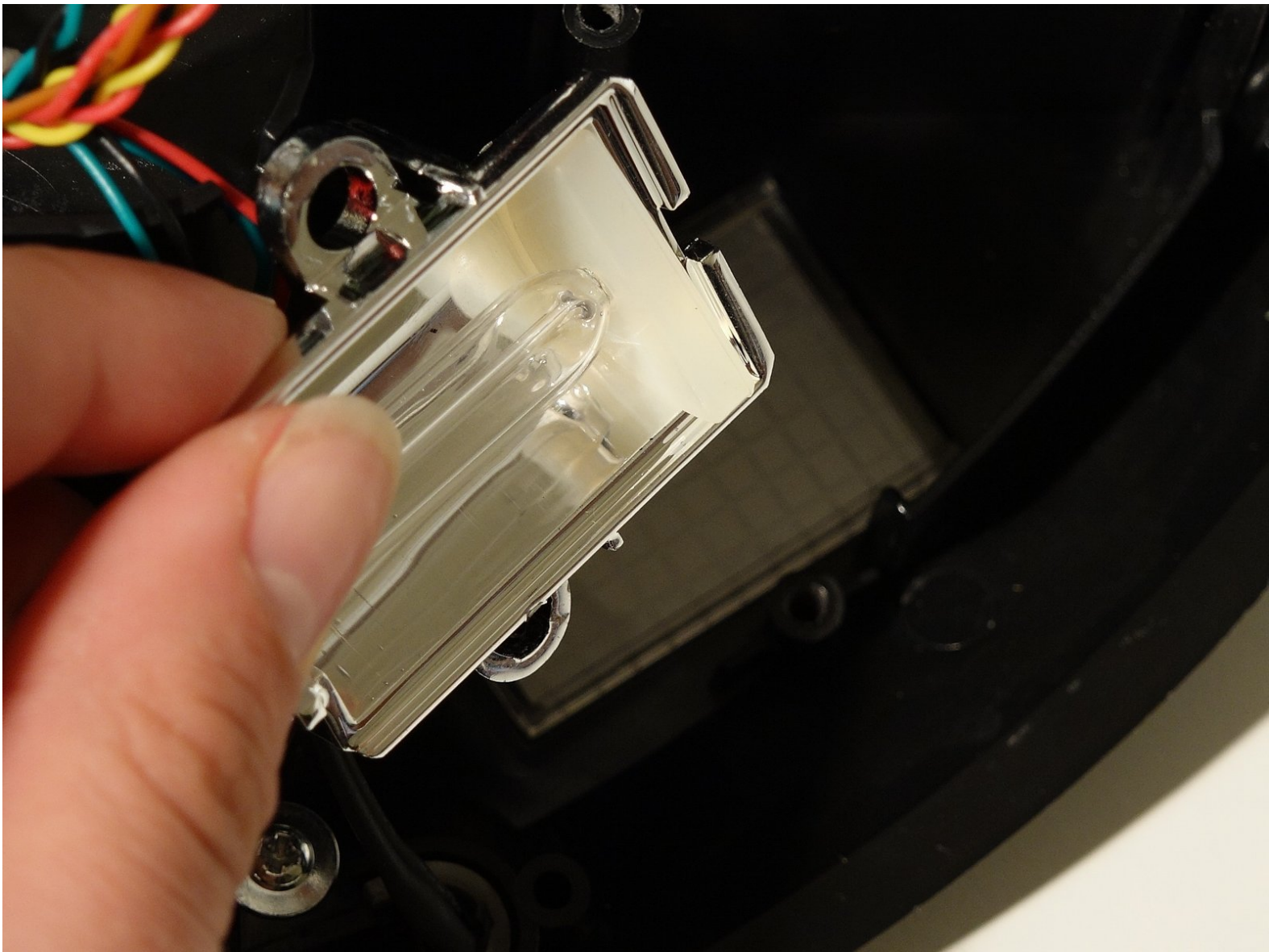




bObi Robotic Vacuum UV lamp Replacement

Directions for removing the UV lamp from a bObi Robotic Vacuum.

Written By: Chelsea



INTRODUCTION

The how-to guide for opening bObi and replacing her UV lamp. For instructions on closing bObi when the replacement is complete, refer to [Closing bObi's Cover Post-Repair](#)



TOOLS:

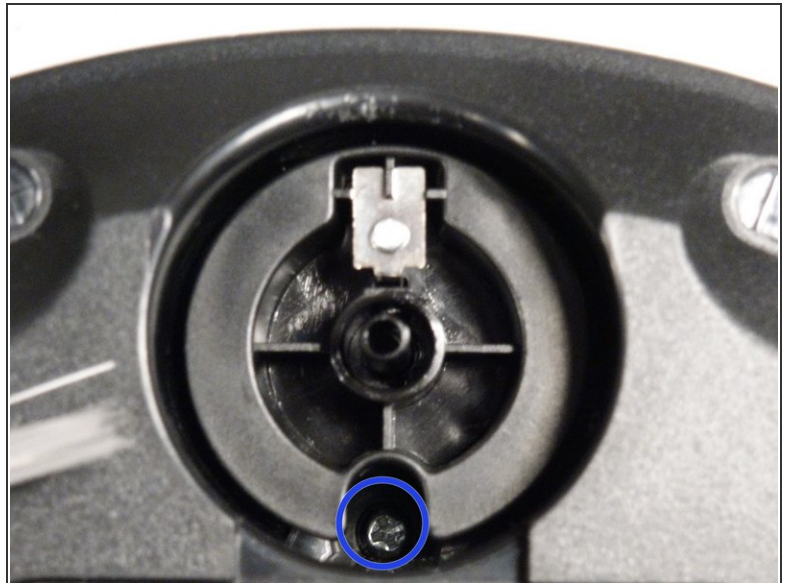
- [Phillips #2 Screwdriver](#) (1)



PARTS:

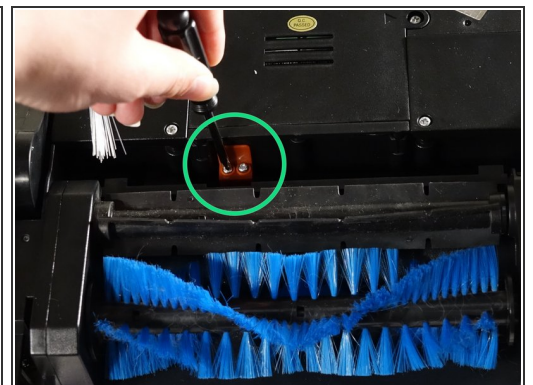
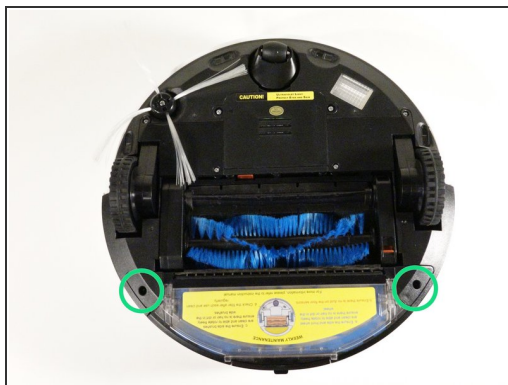
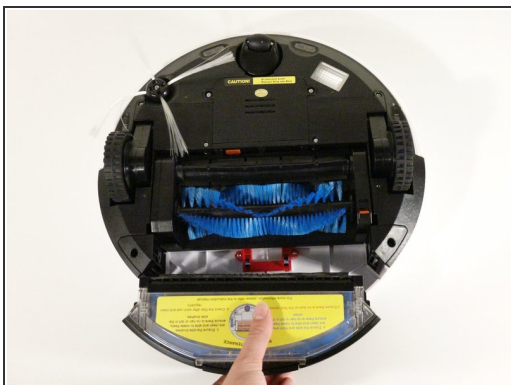
- [UV lamp for bObi Robotic Vacuum](#) (1)

Step 1 — Top Cover



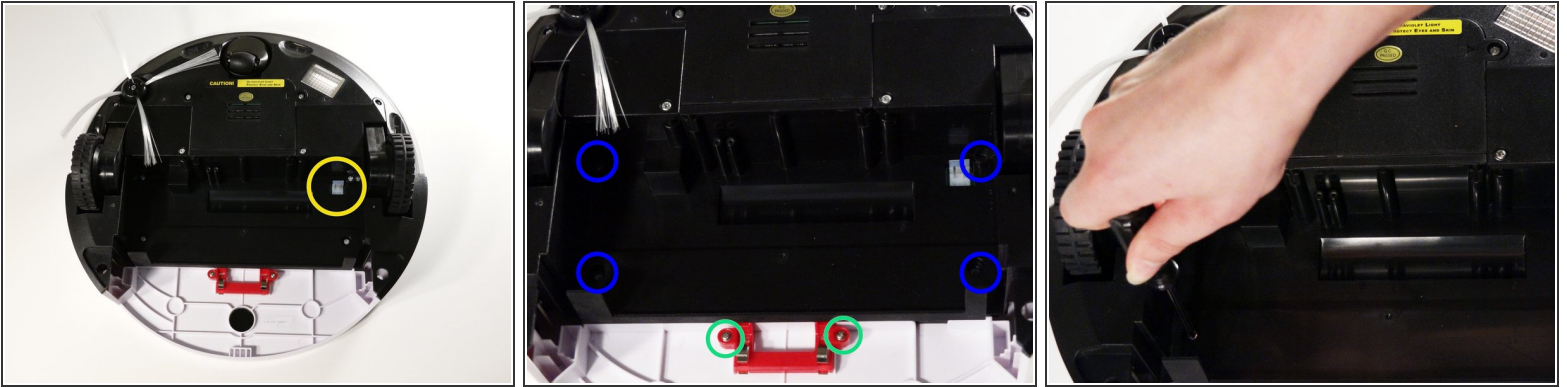
- Remove bObi's front wheel to access one of the screws holding bObi together.
- i* Make sure the wheel is turned closer to bObi's front touch sensors. Use your screwdriver for leverage, and the wheel will pop up and out.
- Uninstall the larger screw that sits deeper in the wheel compartment.

Step 2



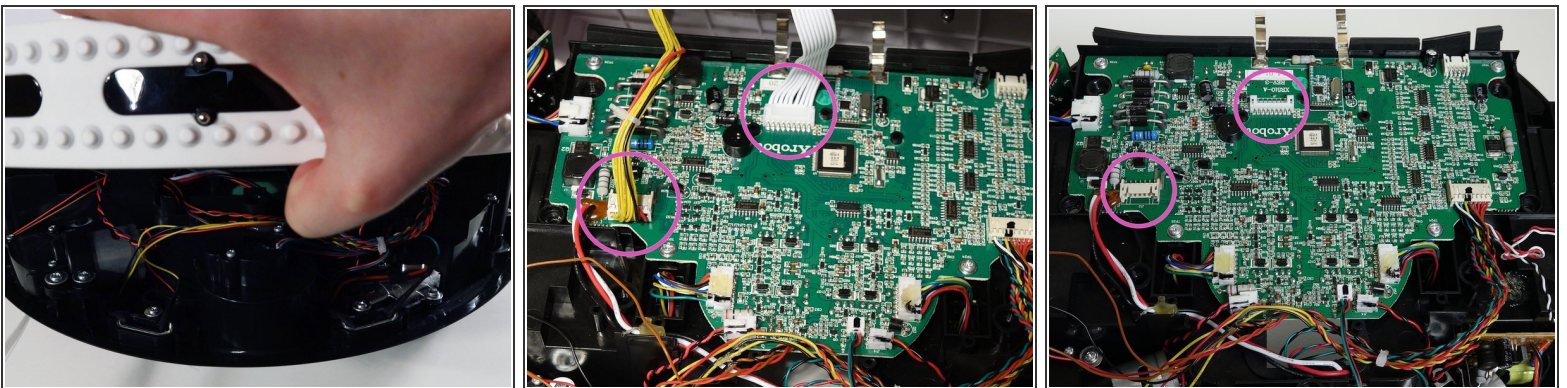
- Remove bObi's dustbin.
- Uninstall the 2 screws close to the bin and 2 smaller screws above her main brushes.

Step 3



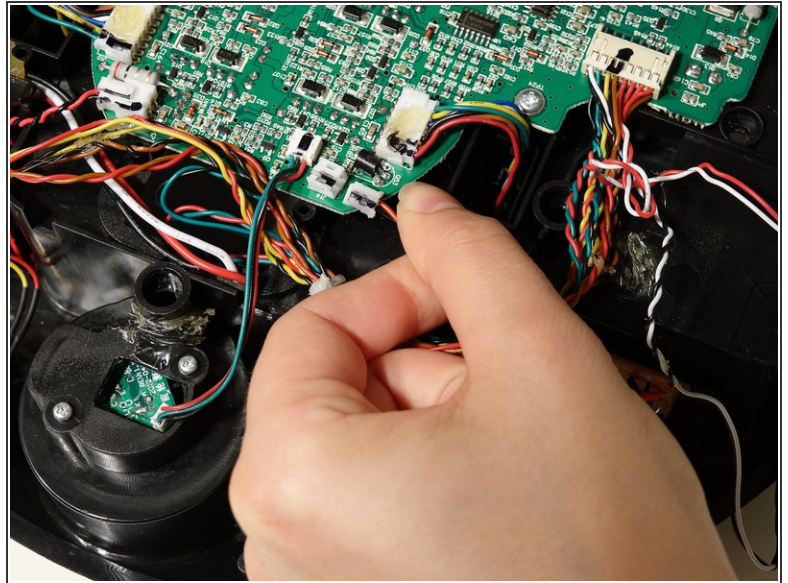
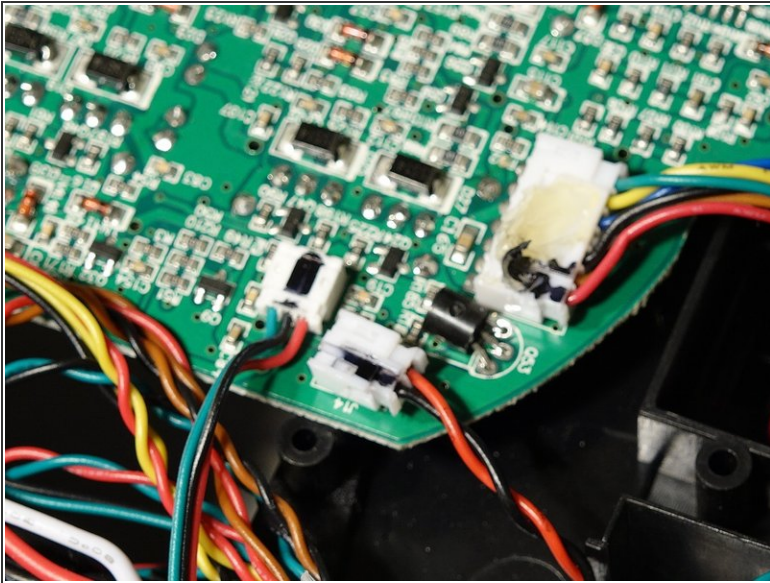
- Lift the brush holder. To detach completely, unplug it from bObi.
- Remove the two screws on the dustbin contact point holder inside bObi.
- There are 4 screws beneath the main brushes. Uninstall these, and open bObi up to expose her main circuit board.

Step 4



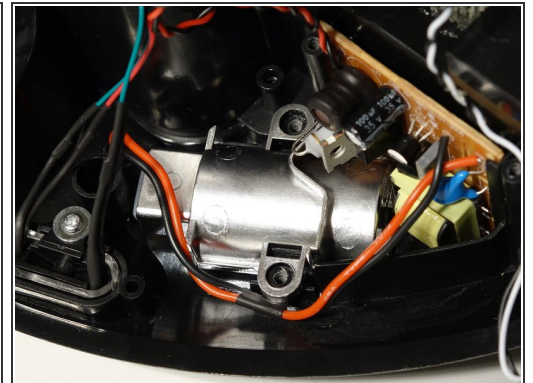
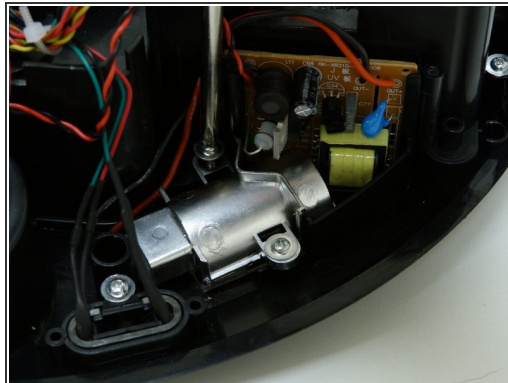
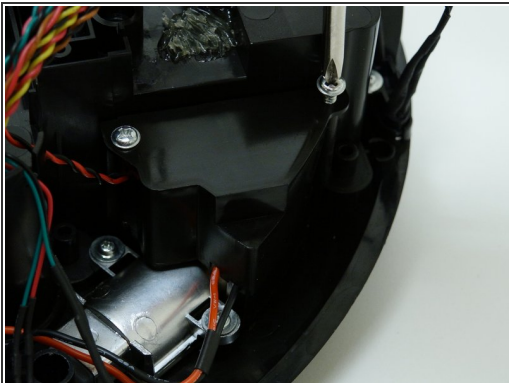
- Detach the two circuit plugs connecting bObi's cover to the main board and the cover will be completely removed.

Step 5 — UV lamp



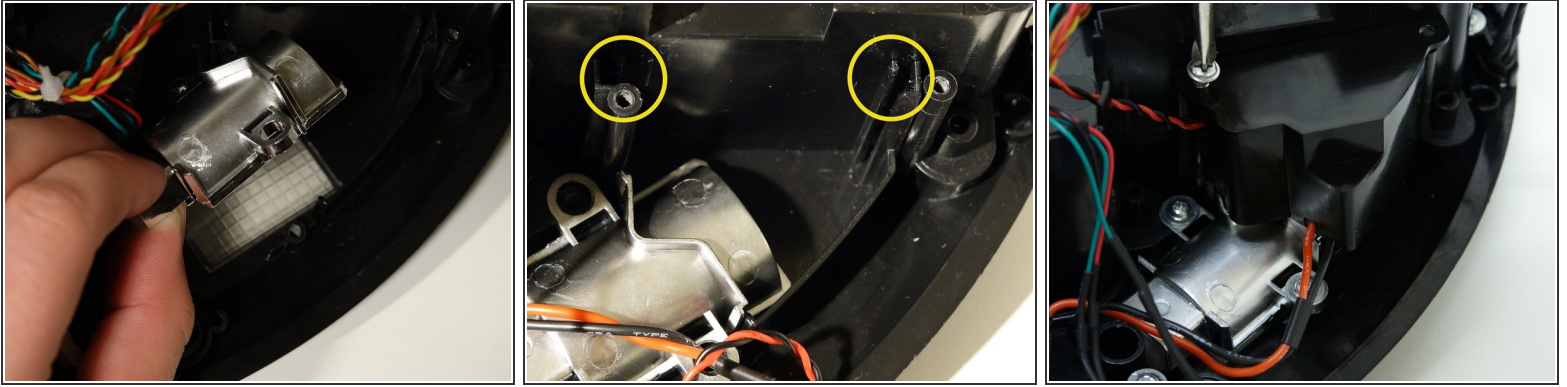
- The UV lamp attaches to the right side of bObi's main board. Remove the circuit plug, and break off any glue holding it in place.

Step 6



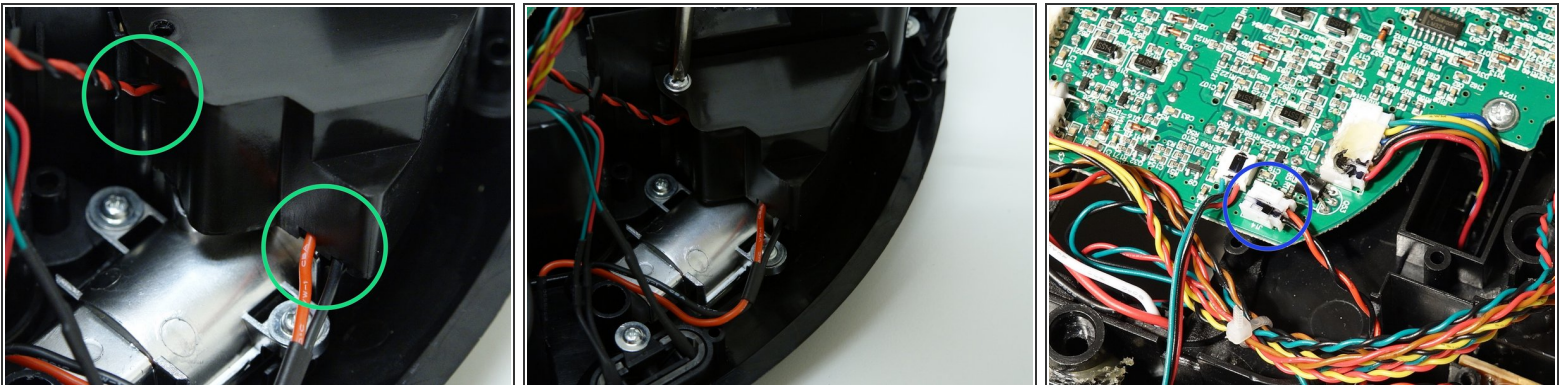
- Remove four more screws. Two found on the UV lamp's circuit board cover and two more holding the actual lamp on bObi.
- Lift the cover up to expose the circuit board.
- Slide the UV lamp's circuit board up to remove it from the holders on bObi. Then lift the whole lamp out.

Step 7



- Lay the lamp down and reinstall the two screws securing it on bObi.
- Slide the circuit board of the new UV lamp down into its holders inside bObi.

Step 8



- Replace the circuit board's cover and screws. Make sure the wires for the UV lamp and its circuit plug sit in the indentations of the circuit board cover.
- Attach the circuit plug to the main board and you'll be ready to close the cover. Instructions on closing bObi can be found in the guide: [Closing bObi's Cover Post-Repair](#)

For instructions on closing bObi when the replacement is complete, refer to [Closing bObi's Cover Post-Repair](#)