



# Removing Dell Inspiron 1150 Optical drive

Written By: Daniel

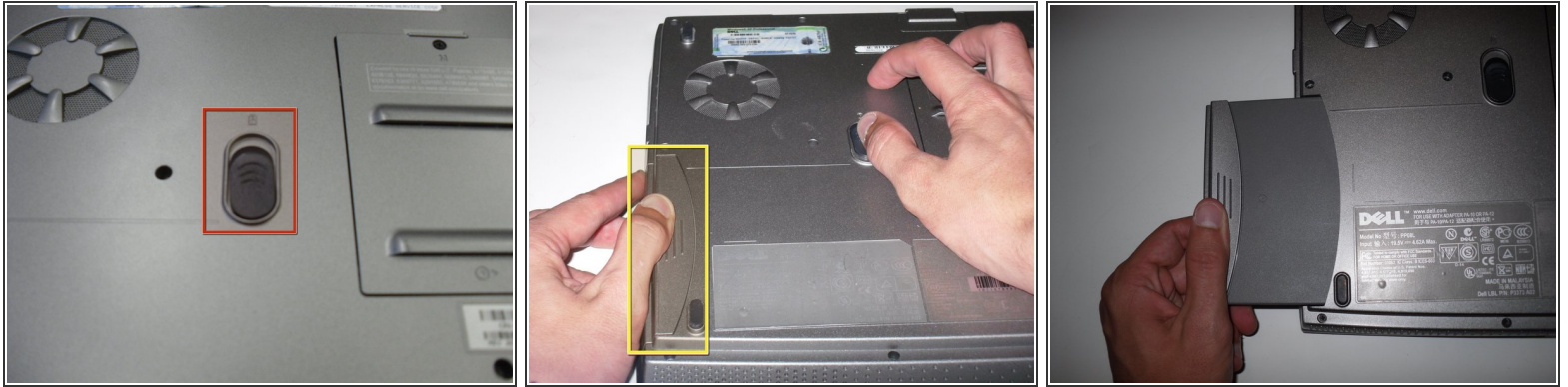




## TOOLS:

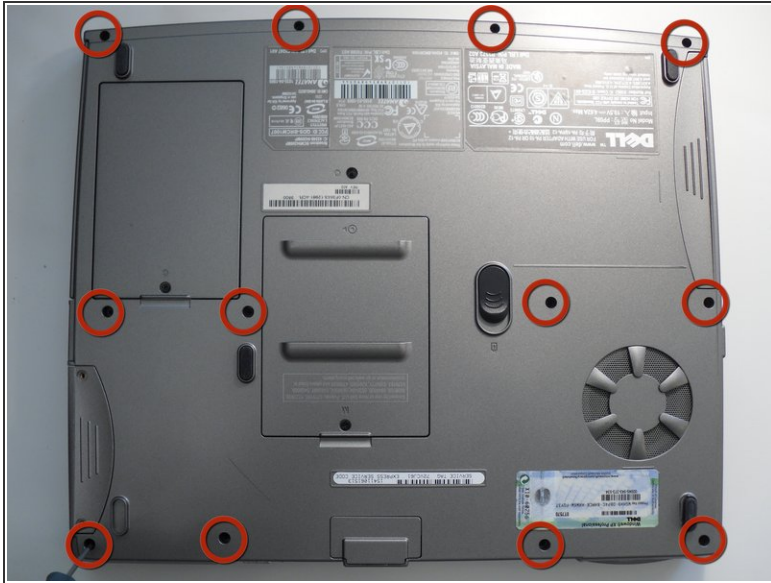
- [Phillips #00 Screwdriver](#) (1)
-

## Step 1 — Removing Dell Inspiron 1150 Battery



- Place the laptop upside down on a clean, flat surface.
- Locate the battery release button with the padlock symbol above it.
- Slide the battery release button towards the padlock symbol and hold it there. Note that the button is spring loaded and will return if released.
- ⓘ The battery is now released from the battery compartment.
- Gently remove the battery from the side of the laptop.

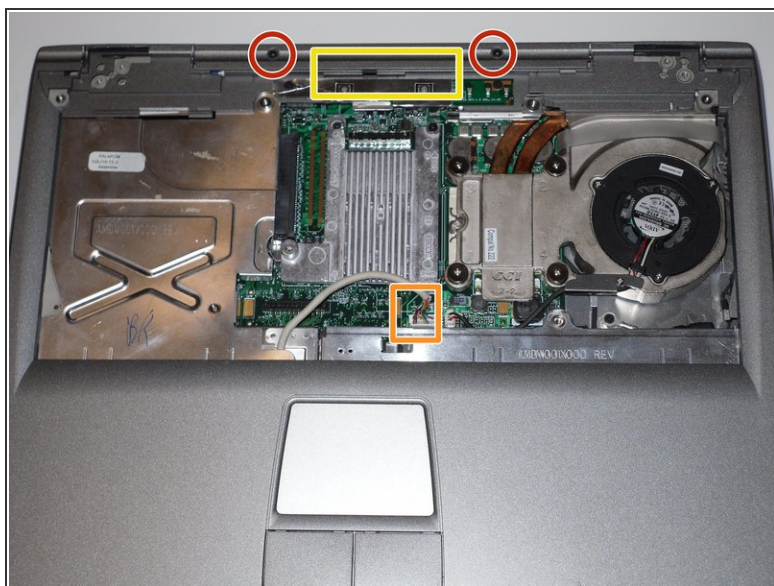
## Step 2 — Removing Dell Inspiron 1150 Palm Rest



- Position the computer upside down.
- Remove the twelve M2.5 x 8-mm screws.
- Remove the M2.5 x 4-mm screw from the battery bay



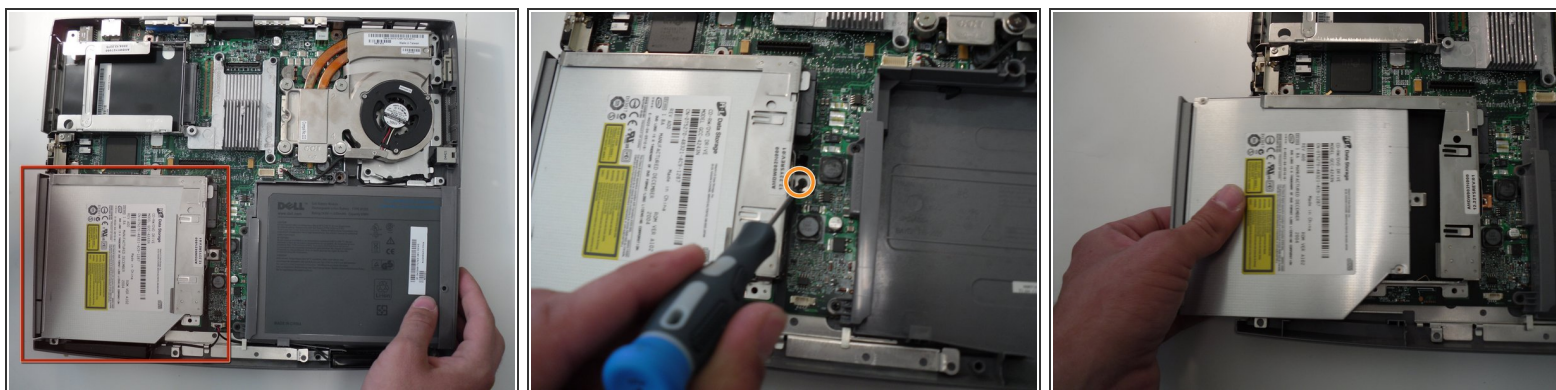
### Step 3



- Position the computer keyboard side up.
- Remove the two M2.5 x 5-mm screws from the top of the palm rest.
- Disconnect the mouse pad cable from the main board.
- Separate the palm rest from the base by lifting its inside edge. Start at the back center.

⚠ Be careful to avoid damaging the palm rest while separating it from the base.

## Step 4 — Removing Dell Inspiron 1150 Optical drive



- Locate the optical disk drive on the bottom left hand side of the laptop.
- Remove the single screw holding the optical disk drive in the chassis.
- Remove the optical disk drive by gently pulling on the outer edge.

To reassemble your device, follow these instructions in reverse order.