



HP Pavilion ZD7000 Wi-Fi Card Replacement

Bad wireless reception? Replace the Wi-Fi card in your HP Pavilion ZD7000.

Written By: Shantel



INTRODUCTION

How to remove the Wi-Fi Card



TOOLS:

- [Phillips #1 Screwdriver](#) (1)
-

Step 1 — Battery



- Begin by turning the laptop over so that you can see the bottom of the computer.

Step 2



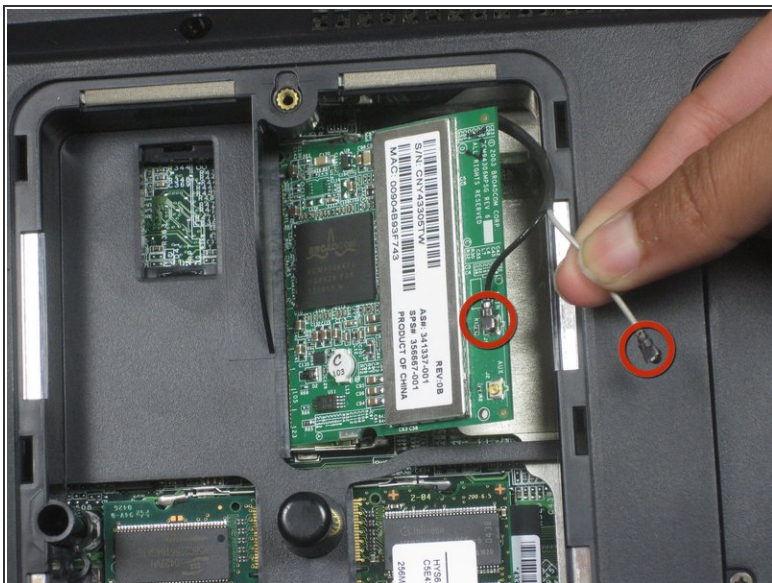
- Slide the battery release switch to the right while simultaneously lifting up the battery.

Step 3 — Wi-Fi Card



- Unscrew the 2 screws from the plate that cover the Wi-Fi card.
- Remove the cover.

Step 4



- Disconnect these 2 antenna wires (which eventually connect to the monitor) from the Wi-Fi card.
 - ❗ For reassembly, note where the black and white cables connect to the card.
- Release the Wi-Fi card from the laptop by pressing the metal hinges on either end of it.
- Gently remove the card from laptop.

To reassemble your device, follow these instructions in reverse order.