



Disassembling Samsung SPH-A760 Keyboard

How to remove keyboard

Written By: David



INTRODUCTION

How to remove keyboard

TOOLS:

Phillips #0 Screwdriver (1)

Spudger (1)

Magnetic Project Mat (1)

Step 1 — Disassembling Samsung SPH-A760 Battery



- Push open the latch and remove the battery.

Step 2 — Disassembling Samsung SPH-A760 Antenna



- Twist off the antenna.
- Pop off the transparent cylinder.

Step 3 — Logic Board



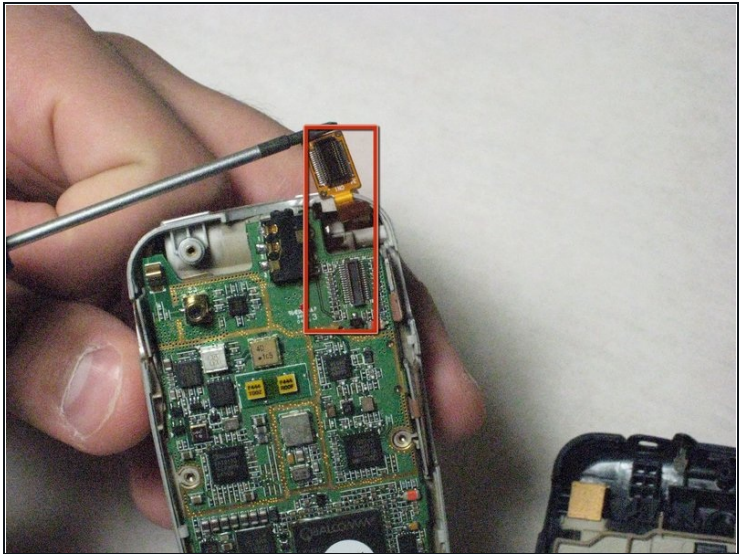
- Remove the five screws as shown.

Step 4



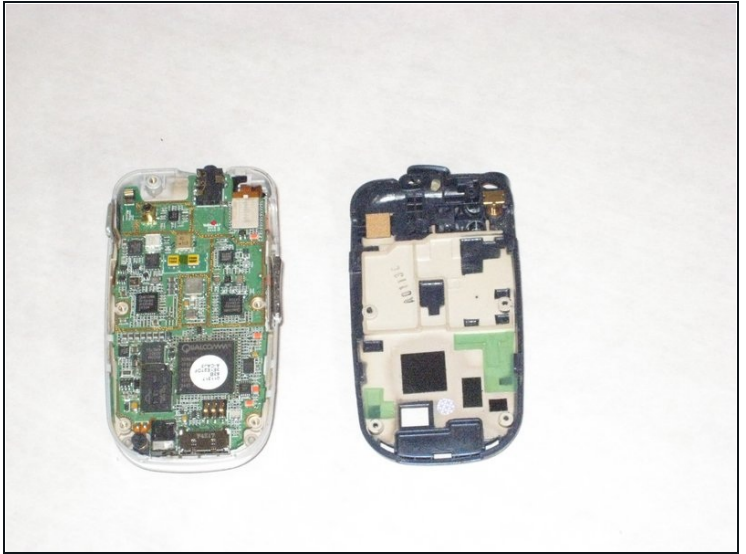
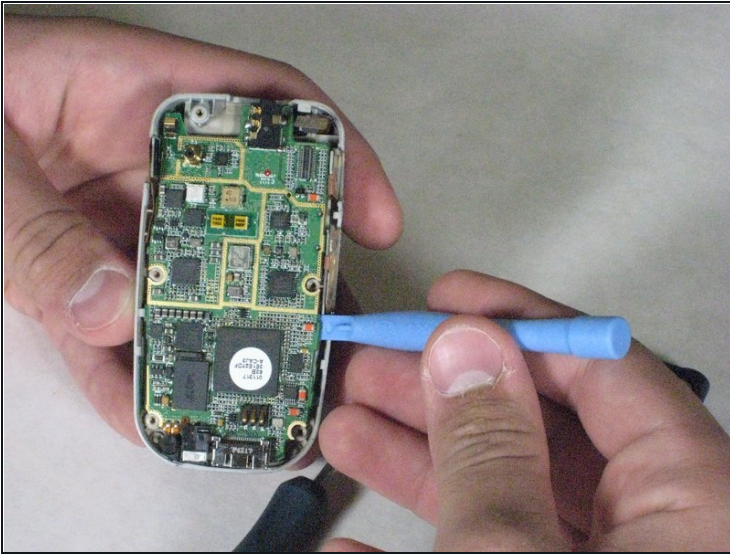
- Carefully pry the back plate off.

Step 5



- Carefully detach golden screen connector.

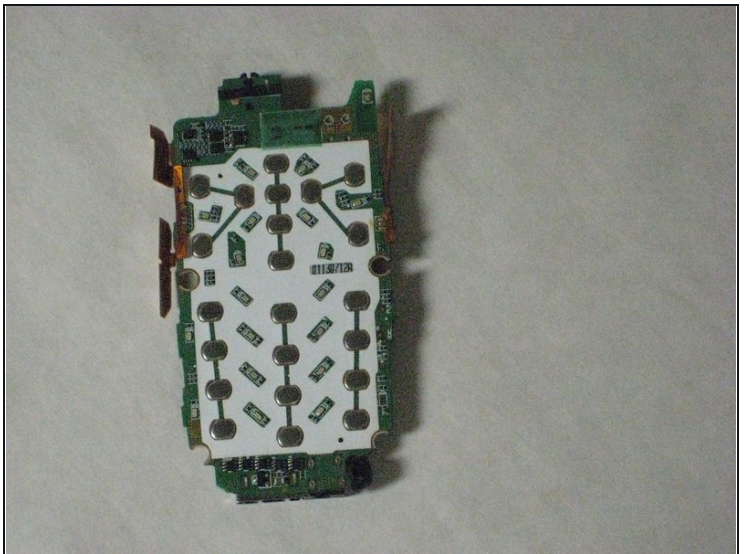
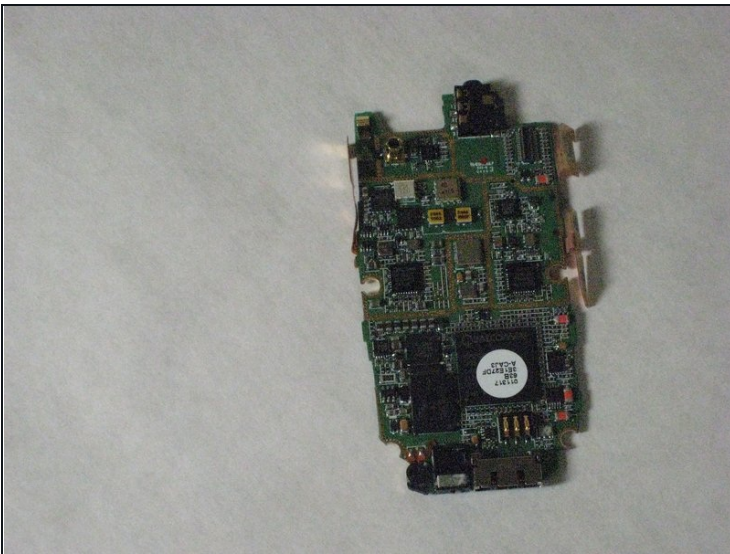
Step 6



- Pop out the logic board with spudger.

⚠ Caution: Do not touch with bare hands, use [tweezers](#) or wash hands before contact.

Step 7



- Place the logic board on a clean tray.

Step 8 — Keyboard



- Peel off the keyboard.

To reassemble your device, follow these instructions in reverse order.