



# Palm IIIxe Battery Replacement

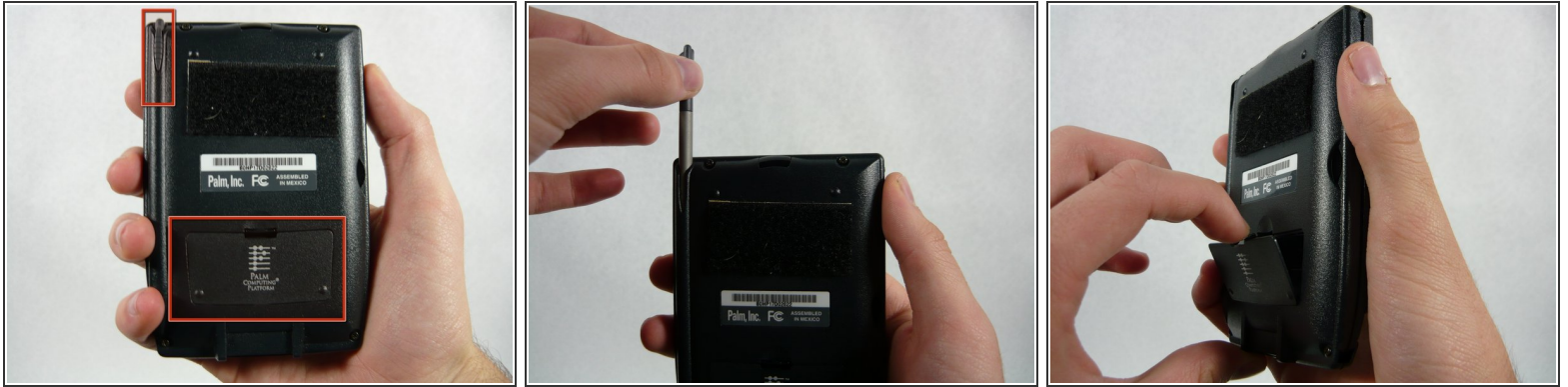
Written By: Jacob



## INTRODUCTION

Removing the batteries is a very simple process that is also a preliminary step to gaining access to the inside of the device.

## Step 1 — Battery



- Turn the device over so it is face down and remove the stylus, and battery cover.

## Step 2



- Now remove the two batteries by pulling on the cloth black tab.
  - ⓘ Remember, when inserting the batteries, to keep the tab below them to make it easier to remove the batteries in the future.
- If this tab is not visible, use the flat head screwdriver and gently pry out the batteries by pushing on the positive end (opposite the spring).

To reassemble your device, follow these instructions in reverse order.

This document was generated on 2020-11-28 01:49:03 AM (MST).

