



Dell Latitude D600 RAM (Main Memory) Replacement

This guide will show how to add RAM or replace existing RAM on the Latitude D600

Written By: Joseph



INTRODUCTION

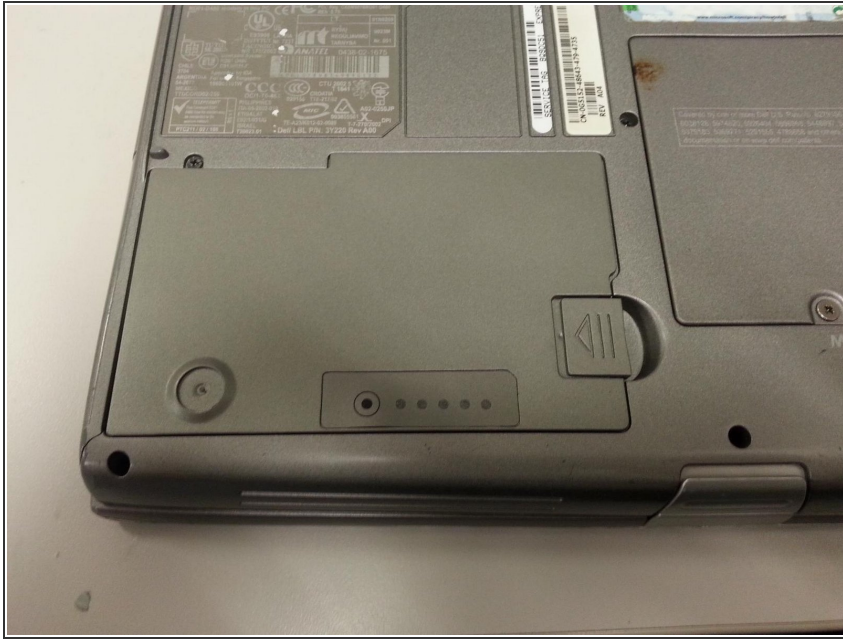
This guide will show how to add RAM or replace existing RAM on the Latitude D600



TOOLS:

- [Screwdriver](#) (1)
-

Step 1 — Battery



- Find the battery

Step 2



- Pull the tab to release the battery

Step 3



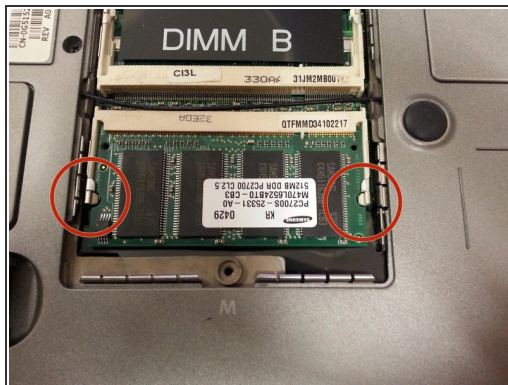
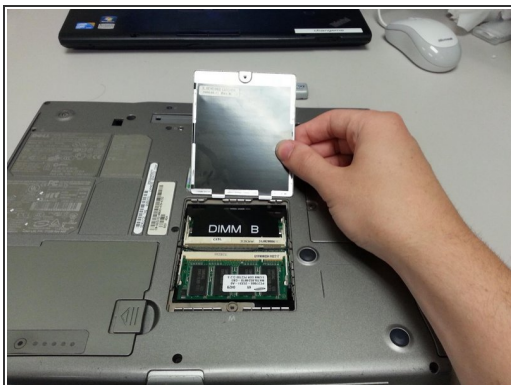
- Pull the battery out

Step 4 — RAM (Main Memory)



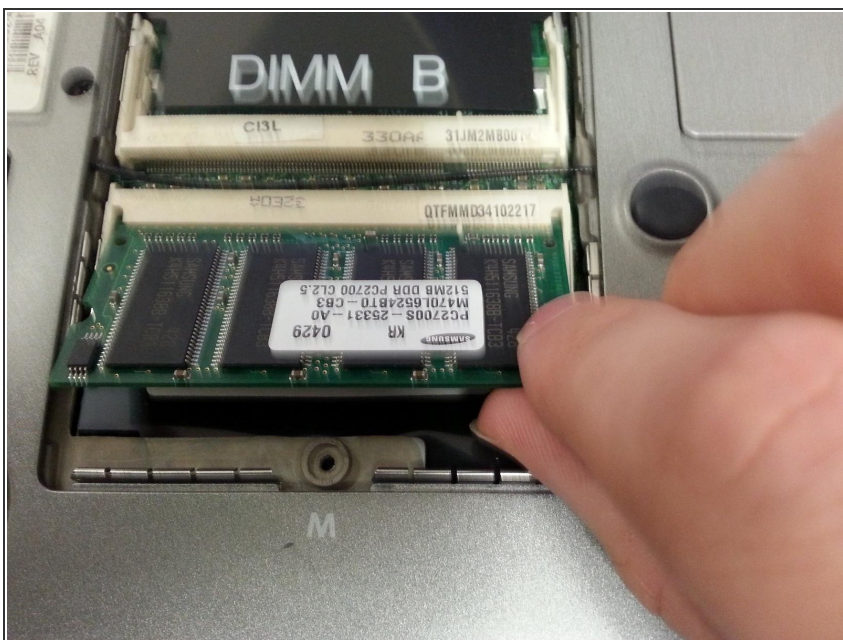
- Find the panel underneath the microsoft product key sticker, the panel is labeled with an M
- Unscrew the single screw above the M

Step 5



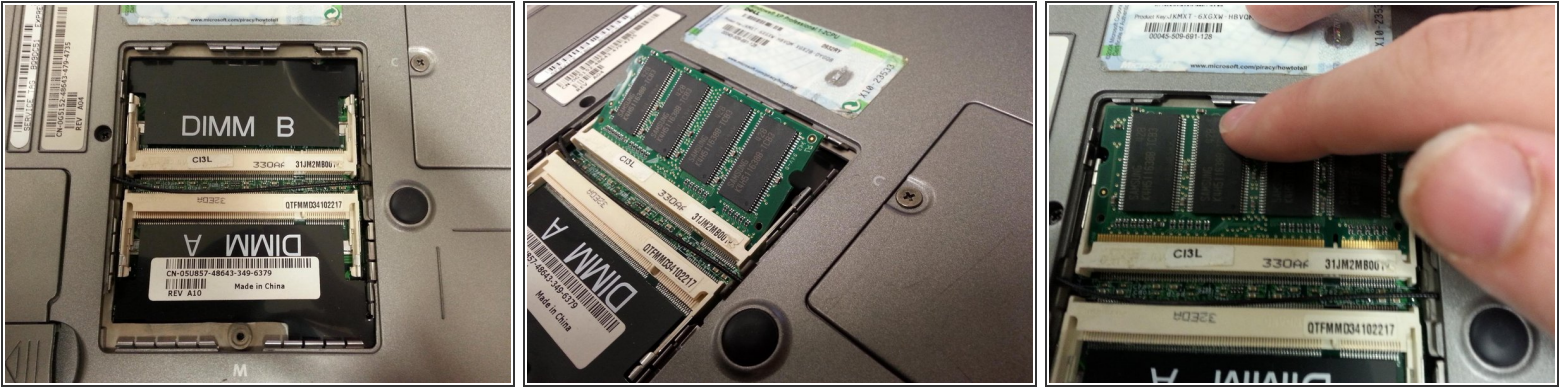
- Pull off the panel to reveal the RAM
- RAM is held in by two tabs, pull each tab to the side and the RAM will pop up

Step 6



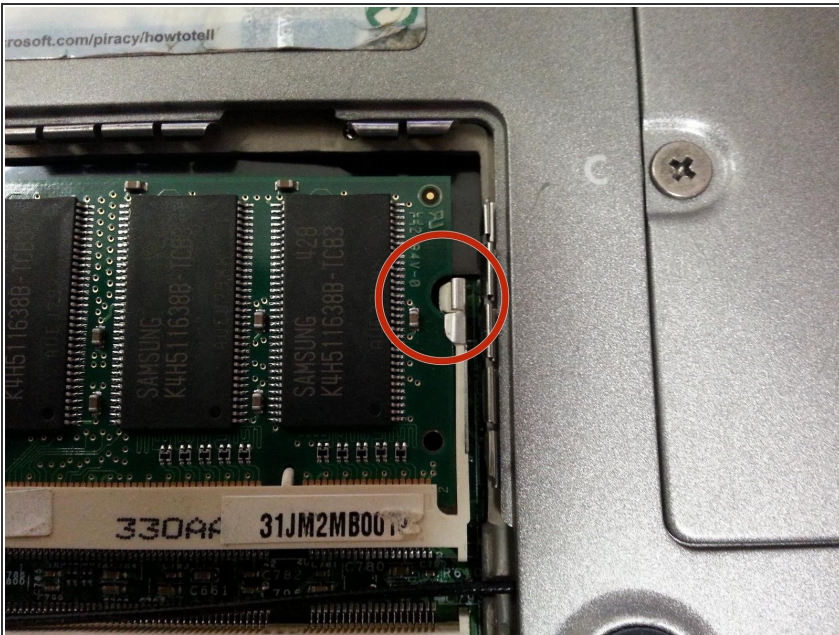
- Once the RAM is popped up, slowly pull it out of the slot

Step 7



- To add or replace RAM, place the memory into the slot at an angle
- Make sure you line it up correctly
- If it is in correctly it should stay up at an angle by itself
- Then push down in the middle until it clicks into place

Step 8



- The RAM should be secured by the tabs where the two semi circles are on the RAM
- If it is not secure, just gently pull it out and try again, use the images to help you out

To reassemble your device, follow these instructions in reverse order.

