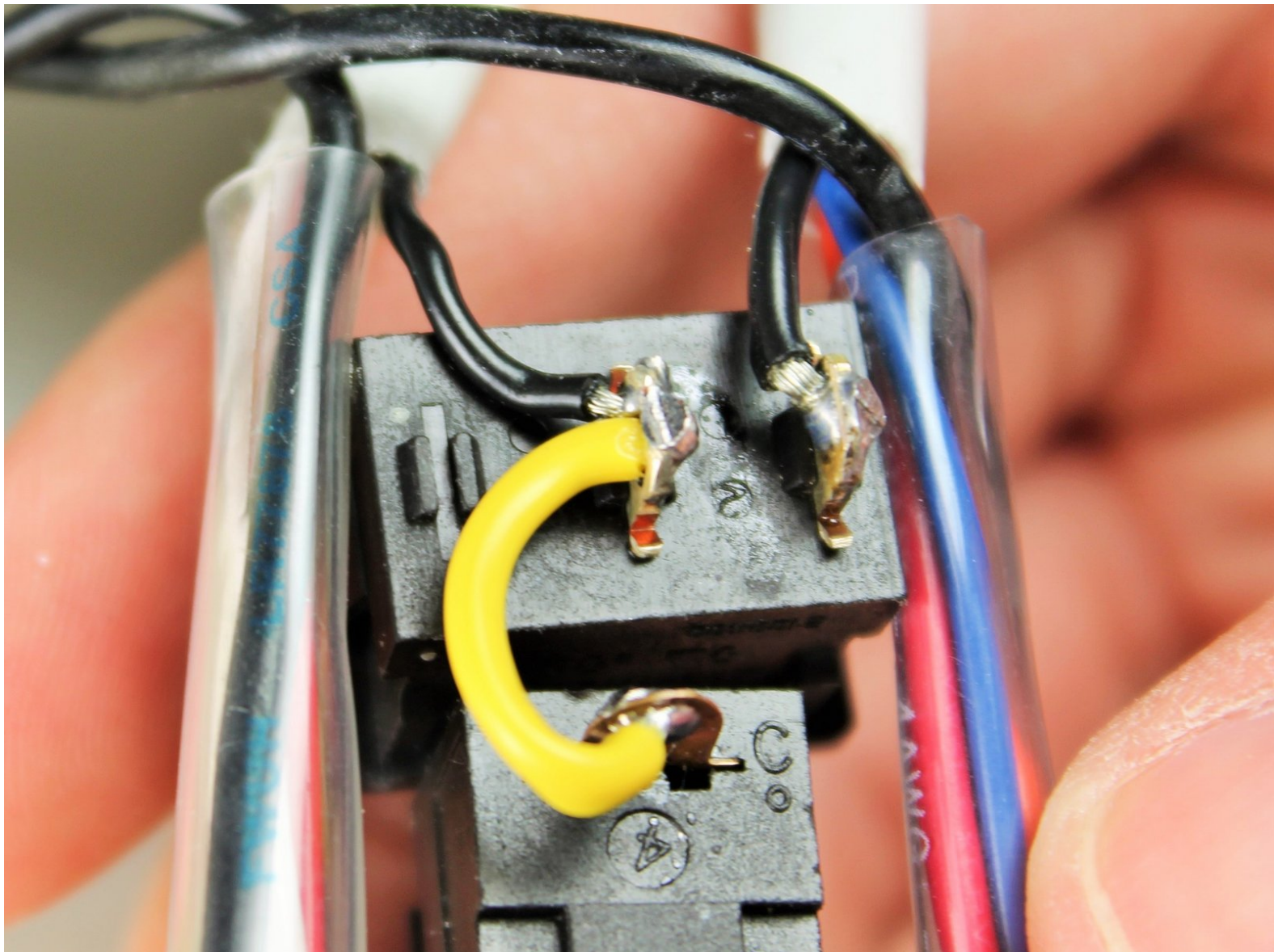




Conair Infiniti Pro Model 259NP Cold Shot Button Replacement

This guide will show you how to replace the Cold Shot button on your hair dryer.

Written By: Timothy Lo



INTRODUCTION

For a sticky Cold Shot button, you may only need to clean the button. This guide will show you how to fully remove and replace the button.

Note: This guide requires soldering skills. If you don't know how to solder or want to brush up on your skills check out this [handy tutorial](#).




TOOLS:

- [Phillips #2 Screwdriver](#) (1)
 - [Soldering Workstation](#) (1)
-

Step 1 — Back Panel



 **Caution:** Unplug the hair dryer before attempting this guide. Leaving the device plugged in may result in electrocution and damage to the device.

- Hold the hair dryer by the handle so that the back panel faces up.

Step 2



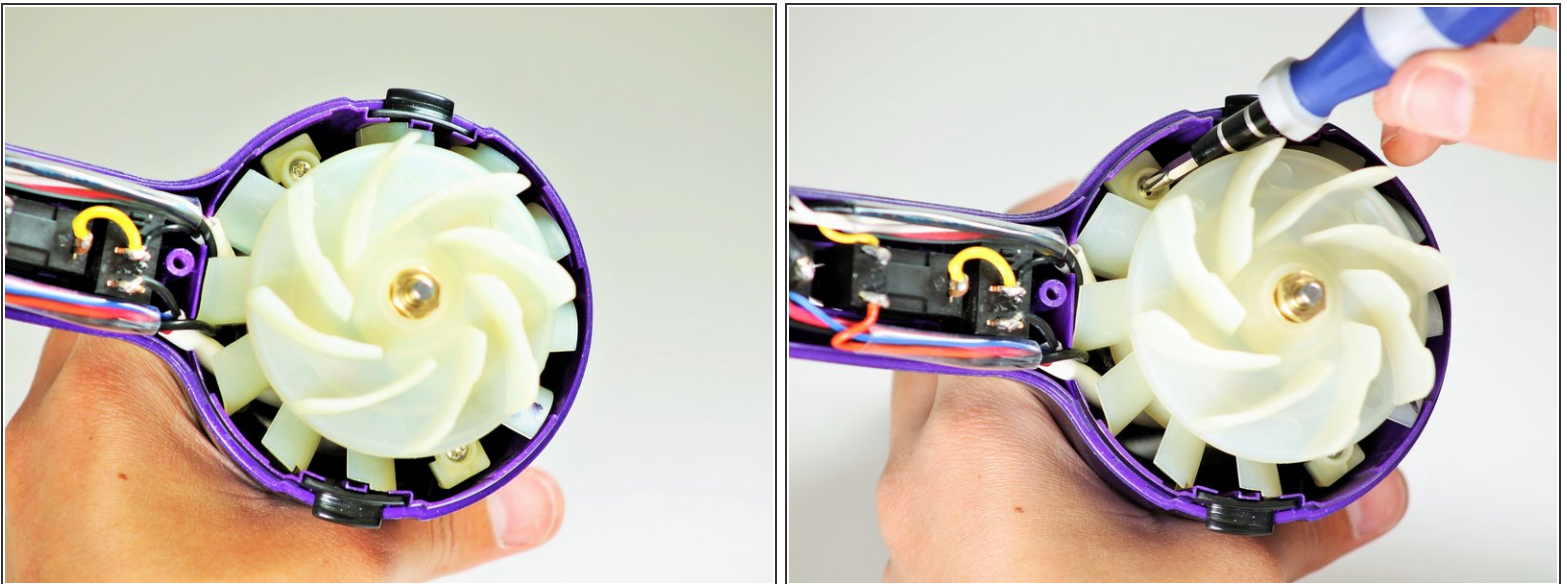
- Remove the two 15.875 mm Phillips #2 screws from the back panel.

Step 3



- Starting from where the cord attaches to the handle, pull apart the two plastic panels.
- Continue separating the back panel, working along the seam.
- With moderate force, completely remove the back panel from the hair dryer.

Step 4 — Fan Motor Assembly



- Hold the hair dryer by the nozzle so that the handle points to the left.
- Remove the two 1-inch Phillips #2 screws from the back of the fan motor.

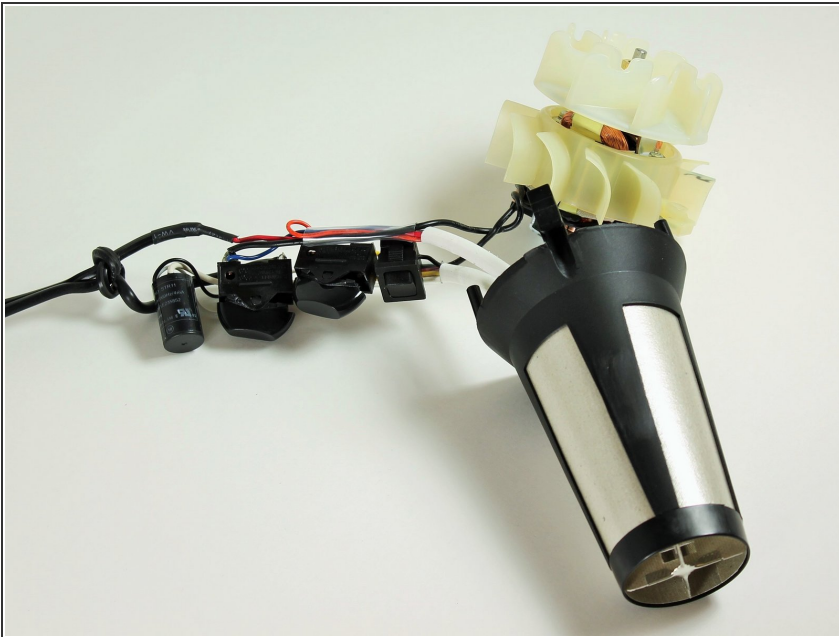
Step 5



⚠ Caution: If you recently used the hair dryer, wait at least 10 minutes before attempting this step. The heating element may still be very hot and can cause serious burns.

- Pull on the back of the fan motor to gently lift the motor out of the hair dryer.
- Lift the attached electrical wiring and heat shield completely out of the hair dryer.

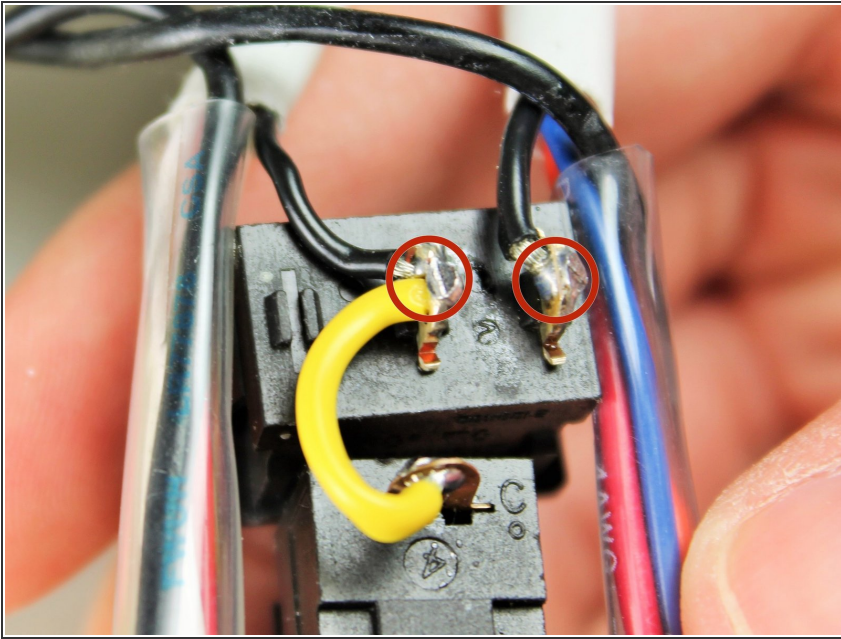
Step 6 — Cold Shot Button



⚠ Caution: Do not attempt to open or tamper with the capacitor. You may suffer severe electrical shocks.

- Hold the electrical switches so that the wires are facing upwards.

Step 7



- Focus on the button closest along the wires to the fan motor.
- Desolder the button at the circled locations.
- ⓘ To reattach the new button, resolder at the same points. Be sure the wires connect to the correct locations.

To reassemble your device, follow these instructions in reverse order.