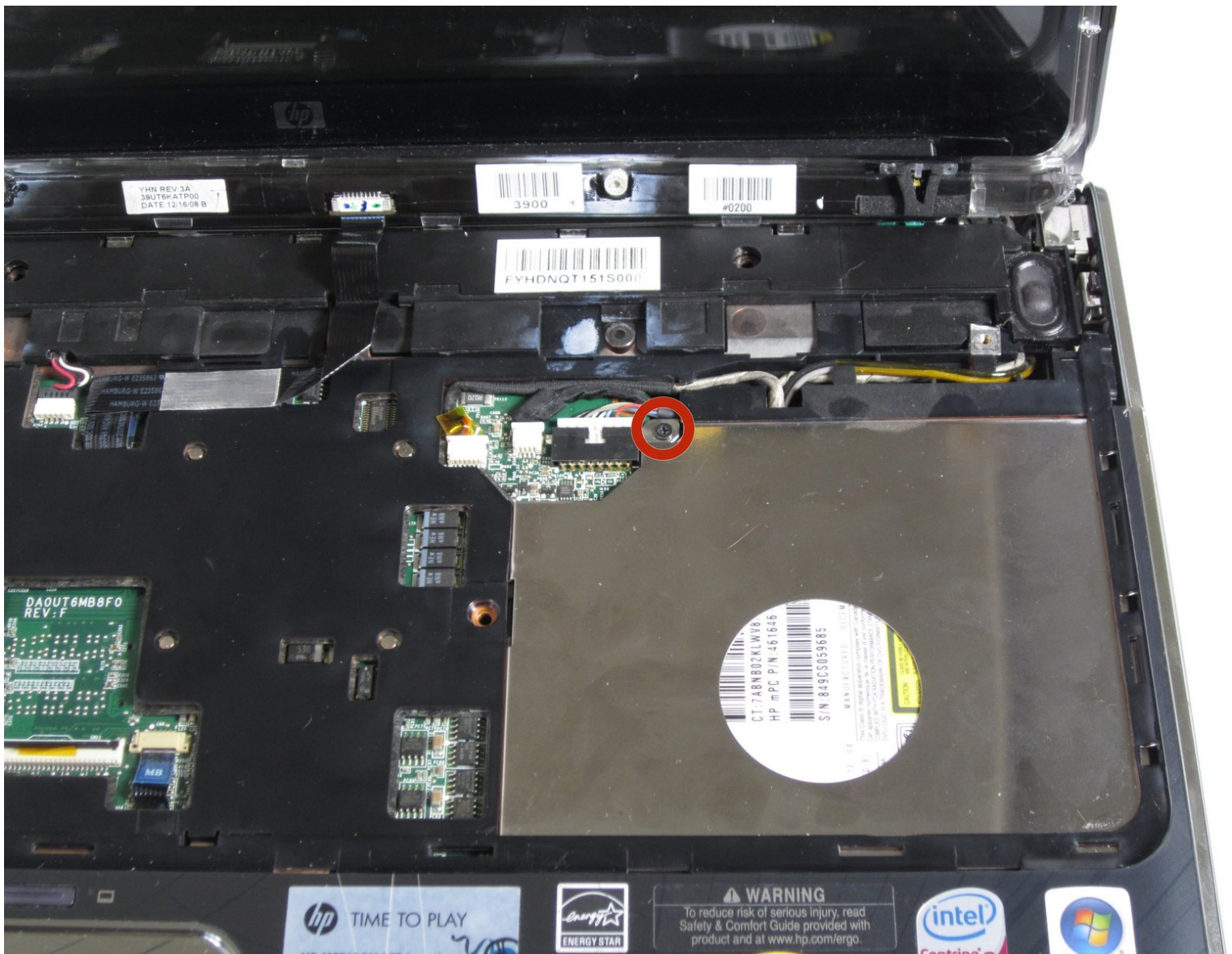




# HP HDX 16-1160US DVD Drive Replacement

This guide will allow the user to replace the DVD Drive.

Written By: Marshall Reid





## TOOLS:

- [Phillips #1 Screwdriver](#) (1)
- [iFixit Opening Tools](#) (1)

## Step 1 — Battery



- Turn the device over so that the bottom side is facing up and the battery is facing away from you.

## Step 2



- Locate the slider under the right side of the battery.
- Using your thumb, slide it all the way to the left until the front of the battery lifts up.

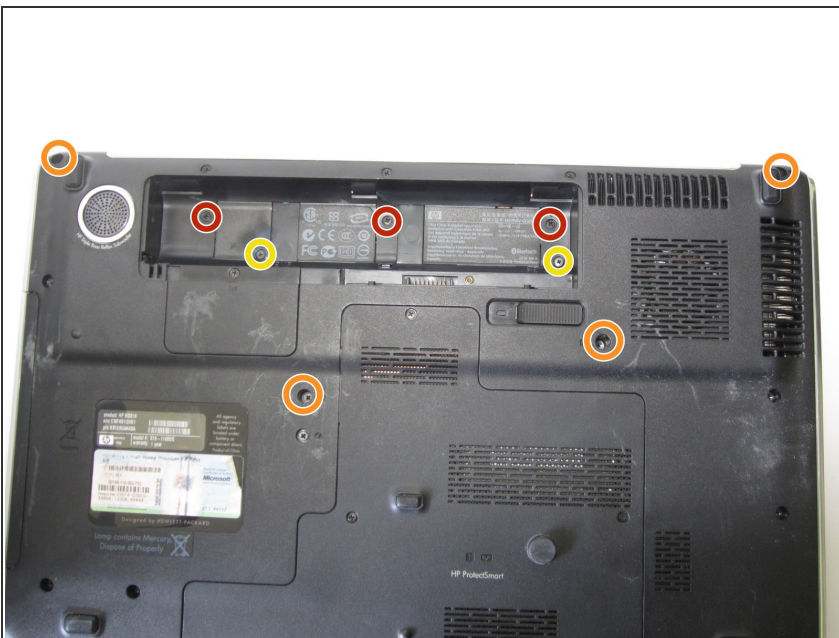


### Step 3



- With your thumb still holding the slider to the left, use the opposite hand to lift the battery out, removing it from the computer.

### Step 4 — Keyboard



- Remove the three 4mm screws using Phillips #1 screw driver.
- Remove the four 6mm screws using Phillips #1 screw driver.
- Remove the two 3mm screws using Phillips #1 screw driver.

## Step 5



- Using your fingers, pry off the speaker cover.

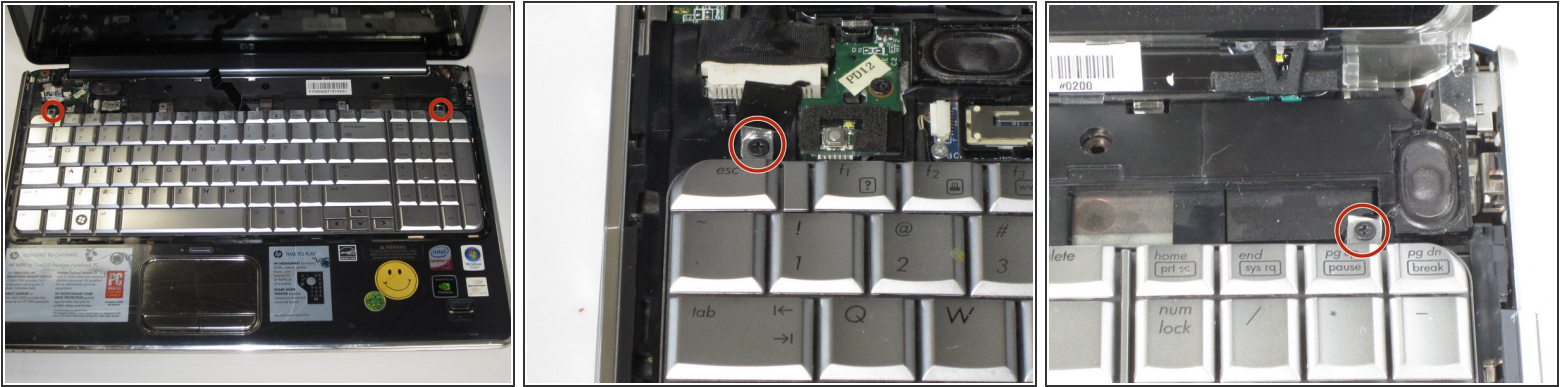
## Step 6



- Use the plastic opener to pry up the chrome keyboard cover from the lab top itself. Carefully work around the edges by prying each snap individually.
  - Remove the chrome keyboard cover.
- ⚠ Be careful not to pull the chrome cover completely off because there is a black strip connecting it to the laptop itself.



## Step 7



- Locate and remove the two 4mm screws with the Phillips #1 screw driver.

## Step 8



- Using your hands, pull the keyboard out.
  - ⚠ Do not pull completely off because there is a grey strip connecting it to the laptop itself.

## Step 9



- Lift the black tab using the plastic opening tool.
- Gently pull the grey strip out, horizontally away from you. This will release the keyboard from the computer.

## Step 10 — DVD Drive



- Use the Phillips #1 Screw Driver to unscrew the 5mm screw.



## Step 11



- Flip over the device so that the bottom side is facing up.
- Use the Phillips #1 Screw Driver to unscrew the 7mm screw near the center of the device.

## Step 12



- Push down and pull out the DVD on the left side of the device.

To reassemble your device, follow these instructions in reverse order.