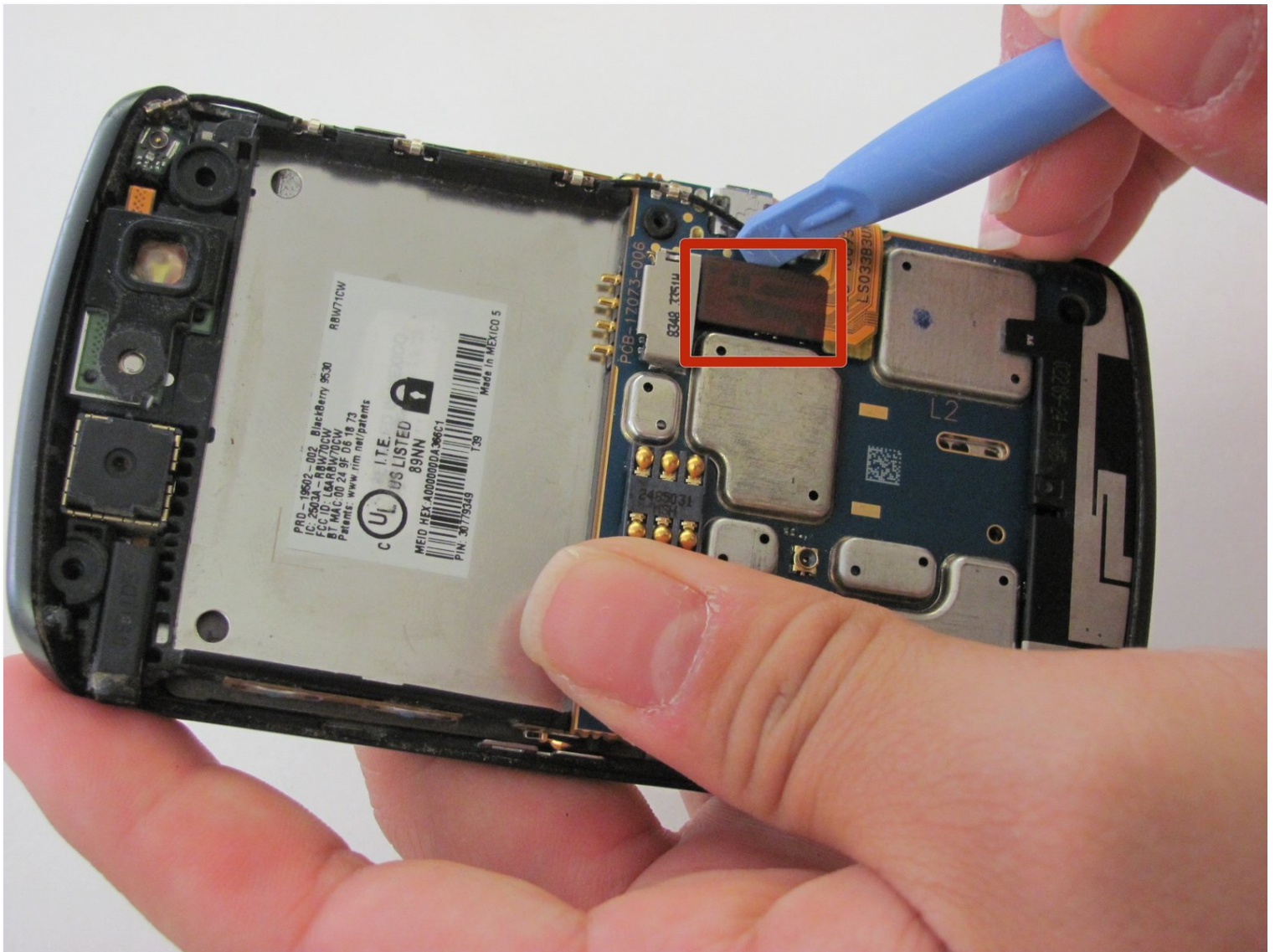




Blackberry Storm 9530 Motherboard Replacement

Attaining access to your motherboard will be...

Written By: Christian Bundschu



INTRODUCTION

Attaining access to your motherboard will be taught in the details of this guide, good luck!

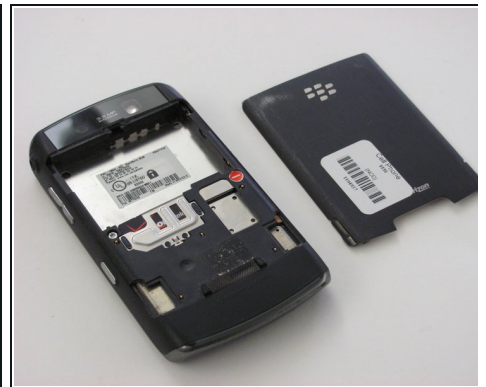
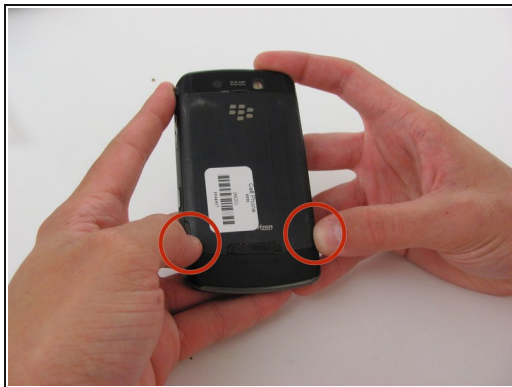
TOOLS:

[Spudger](#) (1)

[T6 Torx Screwdriver](#) (1)

[iFixit Opening Tool](#) (1)

Step 1 — Back Cover Removal



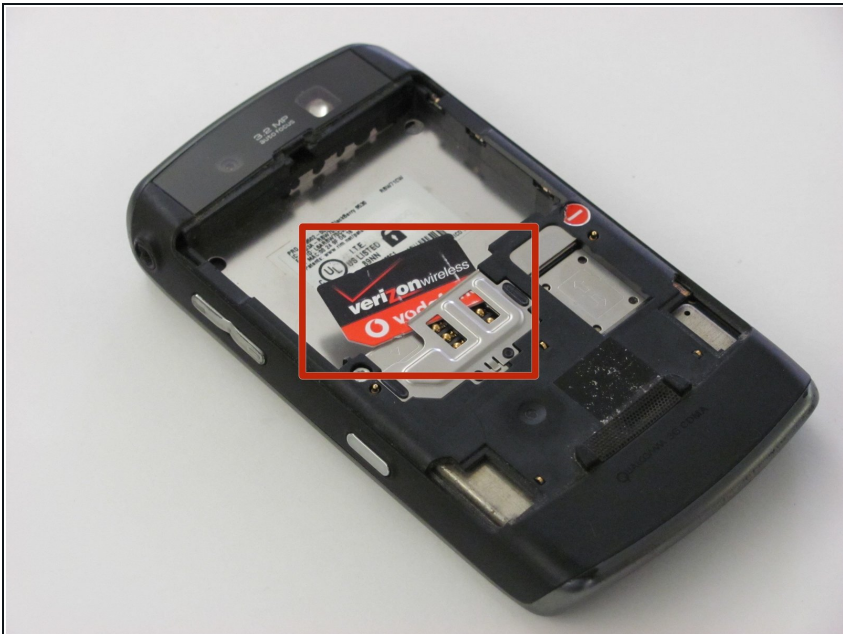
- Locate the two switches toward the bottom corners of the device's back cover.
- Use your thumbs or fingers to push the two switches forward at the same time and detach the back cover from the device.
- Check to make sure the back cover has fully detached from the device. You should be left with two separate pieces: the back cover, and the device with exposed internal hardware.

Step 2



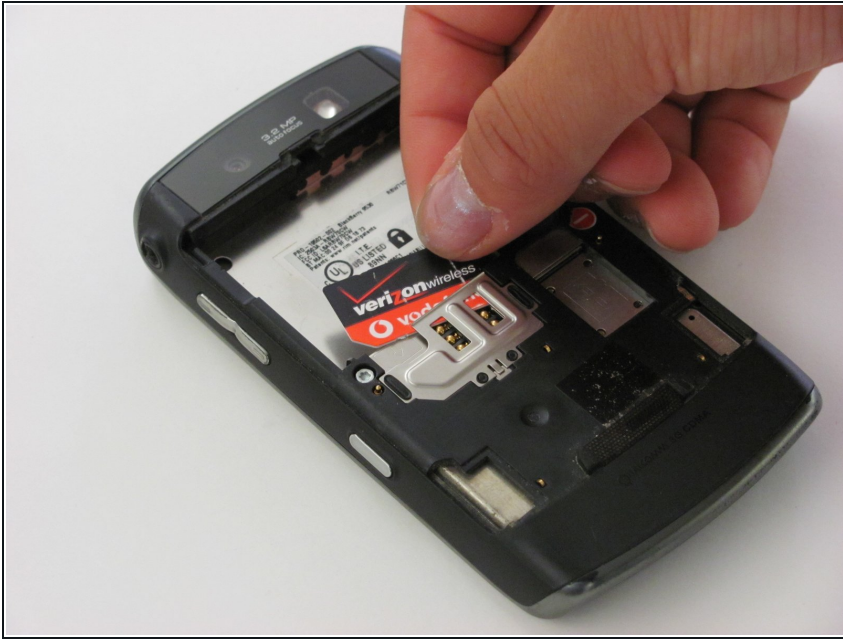
- Identify that the battery is visible once the back cover has been removed, and locate the battery in the rectangular-shaped top half of the device.
- Pry apart the battery and back of the device using the flat end of your spudger tool or using your finger if you do not have a spudger.
- ⓘ Your battery has a specific orientation resembling a horizontal rectangle. Make sure the gold colored leads are aligned with the gold colored strips on your battery before reassembling.

Step 3 — SIM Card



- Locate the SIM card once the battery has been removed. The SIM card is typically located in the center of the phone, and it is secured by a metal tray.

Step 4



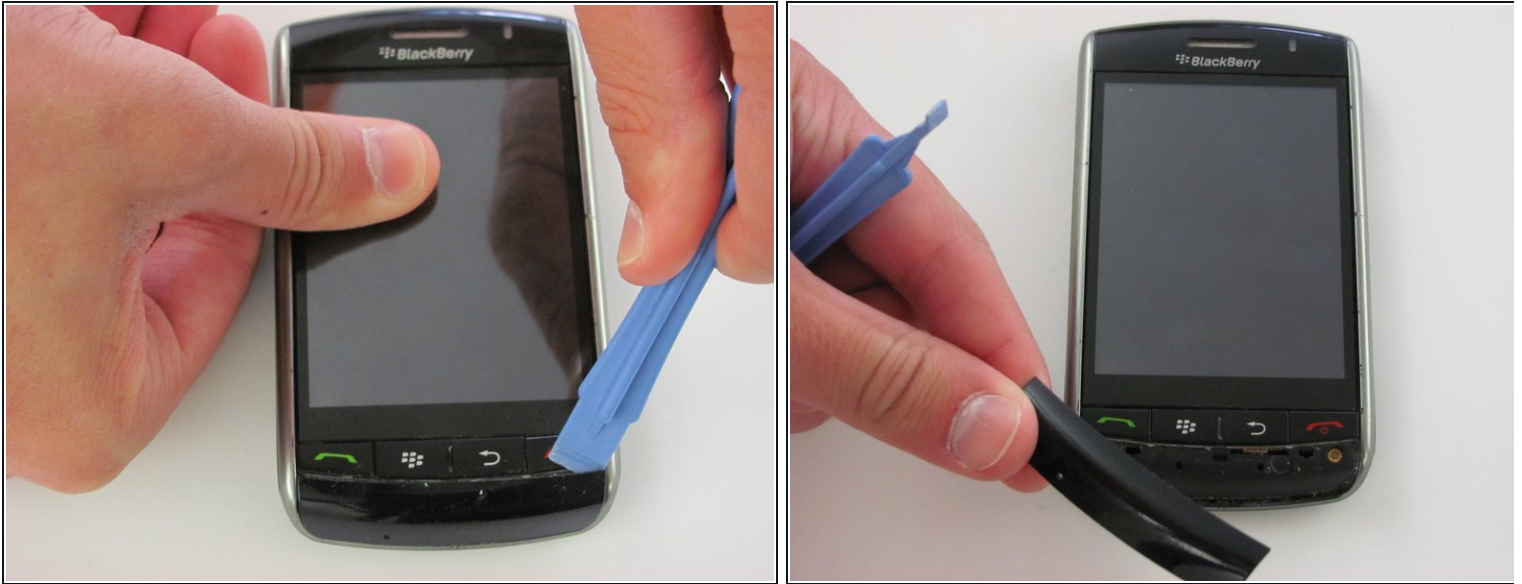
- Remove the SIM card carefully by sliding it upwards out of the metal tray. No tools are needed for this step.
- ❗ Your SIM card has a specific orientation to follow when it is replaced. Make sure the gold colored leads are aligned with the gold colored strips in the SIM card tray before reassembling.

Step 5 — Back Speaker



- Place the opening tool underneath the camera lens' protective plastic cover and pry them apart with gentle force.
- Make sure the plastic cover has been fully removed by carefully lifting it away from the device with your fingers.

Step 6



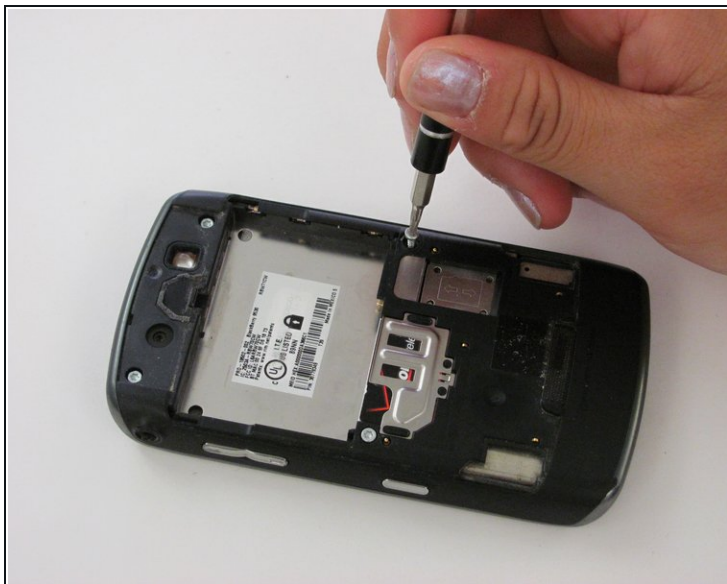
- Flip the device so that the touchscreen and BlackBerry logo is facing you.
- Place the opening tool underneath the front plastic cover located below the buttons with red and green phone symbols.
- Lift and remove the plastic cover once the opening tool is in place. Make sure the plastic cover can be fully detached from the rest of the device.

Step 7



- Remove the two bronze Torx T6 3 mm screws below the red and green phone symbols.

Step 8



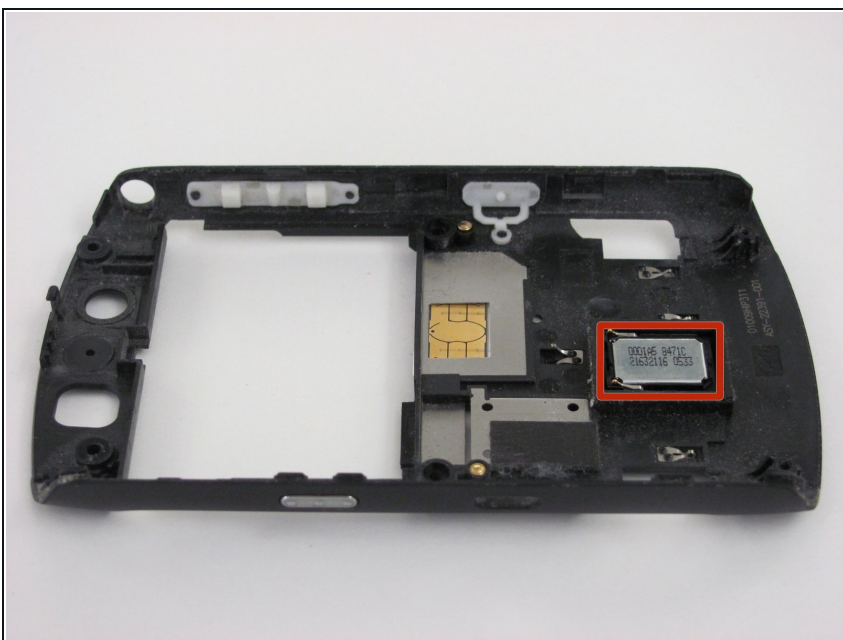
- Remove the four silver Torx T6 3 mm screws on the back of the device.

Step 9



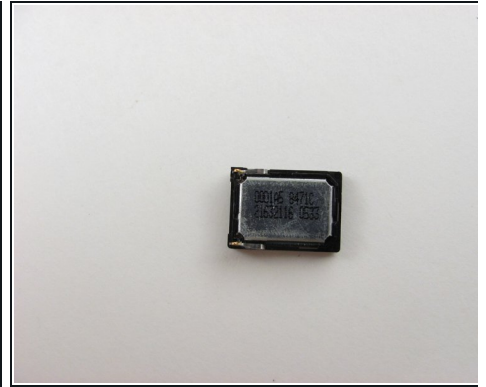
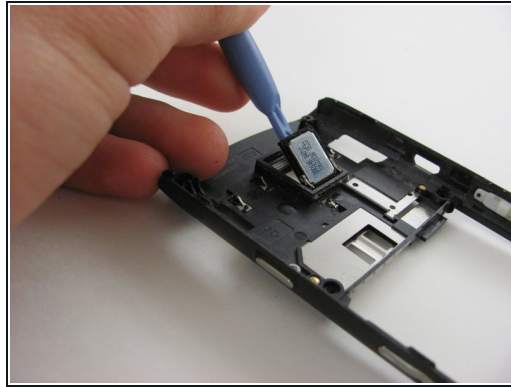
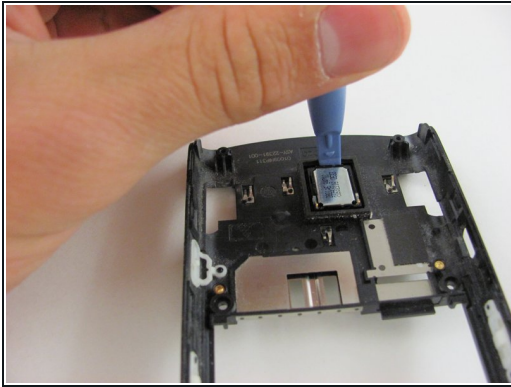
- Pry the opening tool into the slit between the two plastic sides of the device to separate the back panel from the front panel.
- Slide the opening tool across the slit until you are left with two, separated front and back panels.

Step 10



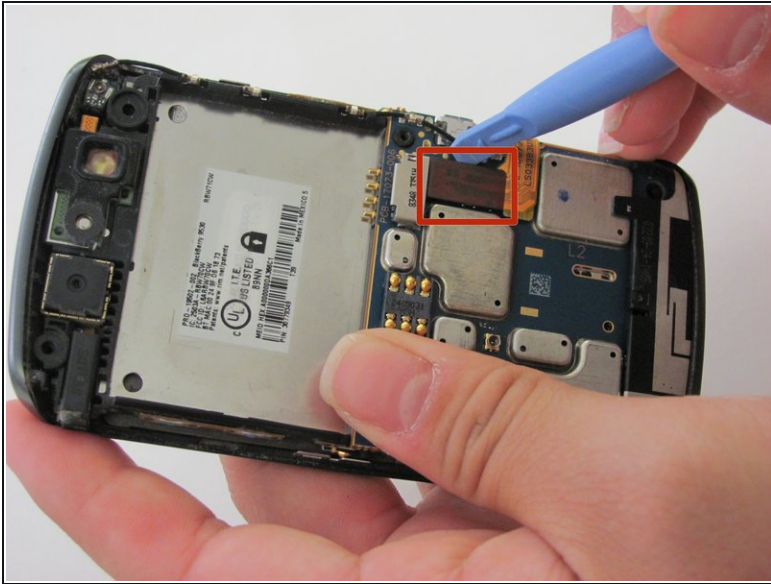
- Locate the silver speaker marked with numbers and letters on the back panel of the device.

Step 11



- Place the opening tool underneath the silver speaker component.
 - Use the opening tool to lift the speaker off of the panel with light force.
 - Set the speaker aside once it has been fully removed.
- ☒ When removing speakers, replacing or re-inserting them may result in looseness. This means that during re-assembly they may fall out or shift. An adhesive may be necessary to keep the speaker in place.

Step 12 — Motherboard



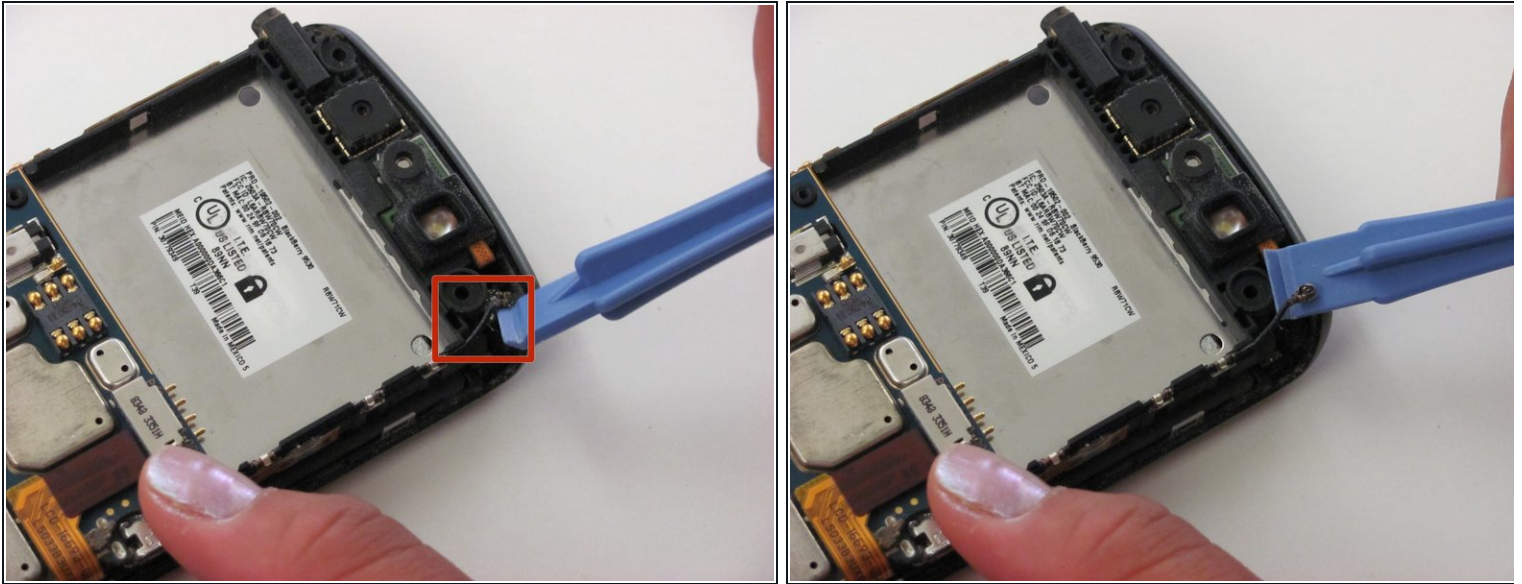
- Locate the red tabbed pin strip connected to the motherboard. The red tabbed pin strip is located on the right-hand side of the back of the phone.
- Disconnect the red tabbed pin strip from the motherboard by inserting the opening tool under the side of the tab and gently pulling upwards toward you.

Step 13



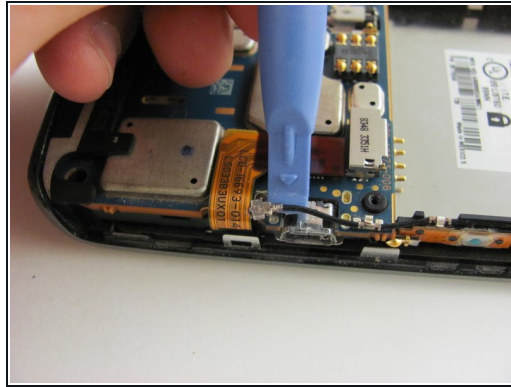
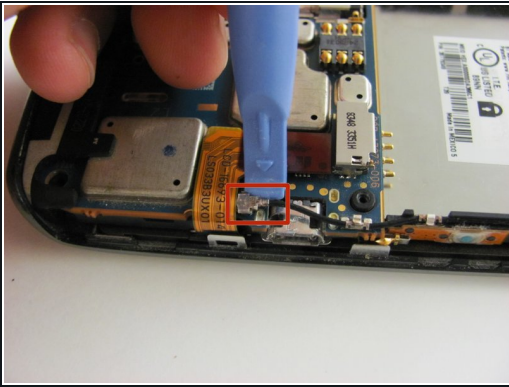
- Locate the yellow tabbed pin strip which is directly next to the original location of the red tabbed pin strip.
- Disconnect the yellow tabbed pin strip from the motherboard using the same technique used to disconnect the red tabbed pin strip in the previous step.

Step 14



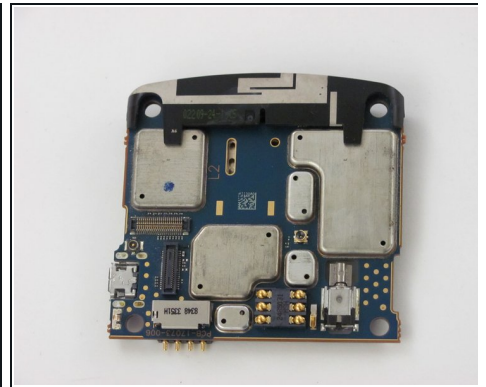
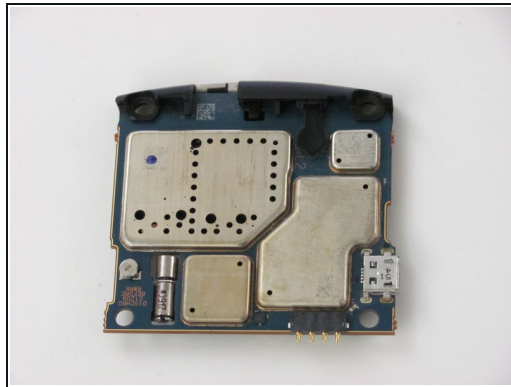
- Disconnect the antenna cable located at the top right corner of the black panel using the opening tool.
- Insert the opening tool underneath the side of the antenna connection, and gently pull upwards to disconnect the cable.

Step 15



- Locate the second antenna connection toward the middle right area of the back panel. It is found in the corner where the red and yellow tabbed pin strips met.
- Remove the antenna connection using the same method done in the previous, top antenna removal step.
- Loosen the bottom metal cable grip (which pins down the cable) to separate the antenna from the motherboard entirely.

Step 16



- Remove the entire motherboard now that all the components holding it down have been removed or disconnected.
- Grip the top right edge of the motherboard with your fingers and remove it by pulling it out gently.

To reassemble your device, follow these instructions in reverse order.